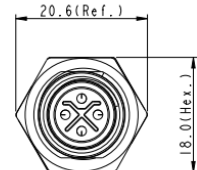
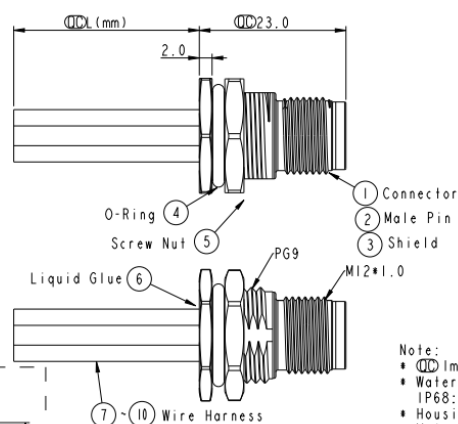


REV.	ECN NO.	DATE	SIGN	DESCRIPTION
A	Initial Release	2015/03/04	Cary	Change Rev. 01 to Rev.A

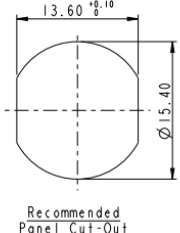
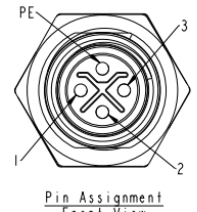
ALTW
CONFIDENTIAL
2015-03-04
R&D DEPT.



MI2S-04PMMS-SF8BXX
 XX: 150~1500mm
 15: 150mm
 30: 300mm
 50: 500mm
 A0: 1000mm
 A5: 1500mm
 Wire Length(L): 150~1500mm



ALTW
DCC DEPT.
CONFIDENTIAL
2015.04.27
ISSUED



PE	Black	黑
3	Blue	藍
2	White	白
1	Brown	棕
Conn.	Wire Color	
	Pin Out	

- Note:
- ① Important Dimension.
 - Waterproof Rate: IP68.
 - IP68: 1M Depth Of Water In 24hours.
 - Housing: PA66, UL94V-0, Black.
 - Male Pin: Copper Alloy, Gold Plated.
 - Shield: Zinc Alloy, Nickel Plated.
 - Panel Nut: Zinc Alloy, Nickel Plated.
 - O-Ring: Viton, Black.
 - Wire Harness: UL1015 16AWG(1.5mm²).
 - Rated Voltage: 630V AC
 - Rated Current at 40°C: 12A
 - Operation Temperature: -40~85°C.
 - For Panel Thickness Max 4.5mm.
 - Nut Torque: 4~6 Kgf.cm(0.4~0.6N.m).
 - Wire harness Tolerance: 150~300 ±15mm
301~1000 ±20mm
Over 1000 ±40mm

UNIT: mm	①	②	③	④	⑤	⑥	⑦	⑧
TOLERANCE								
.X	±0.25							
.XX	±0.1							
.XXX	±0.05							
ANGLES	±1°							
TITLE		MI2 S-Code 4Pin Male Type			ITEM NO.		DATE	
SCALE		1:1			DRAWN BY		Cary	
SIZE		A4			CHECKED BY		Yu Long	
SHEET		1 of 1			APPROVED BY		Jerry	
REV.		A			DATE		2015-03-04	
ECN NO.		A.2			DATE		2015-03-04	
QC		① Inspection item			DATE		2015-03-04	
Amphenol LTW					DATE		2015-03-04	
安費諾亮泰企業股份有限公司					DATE		2015-03-04	

THIS DOCUMENT IS SUBJECT TO CHANGE WITHOUT NOTICE. IT IS CONFIDENTIAL AND A PROPERTY OF AMPHENOL LTW. DISCLOSURE TO THIRD PARTY HAS TO BE AUTHORIZED BY AMPHENOL LTW.