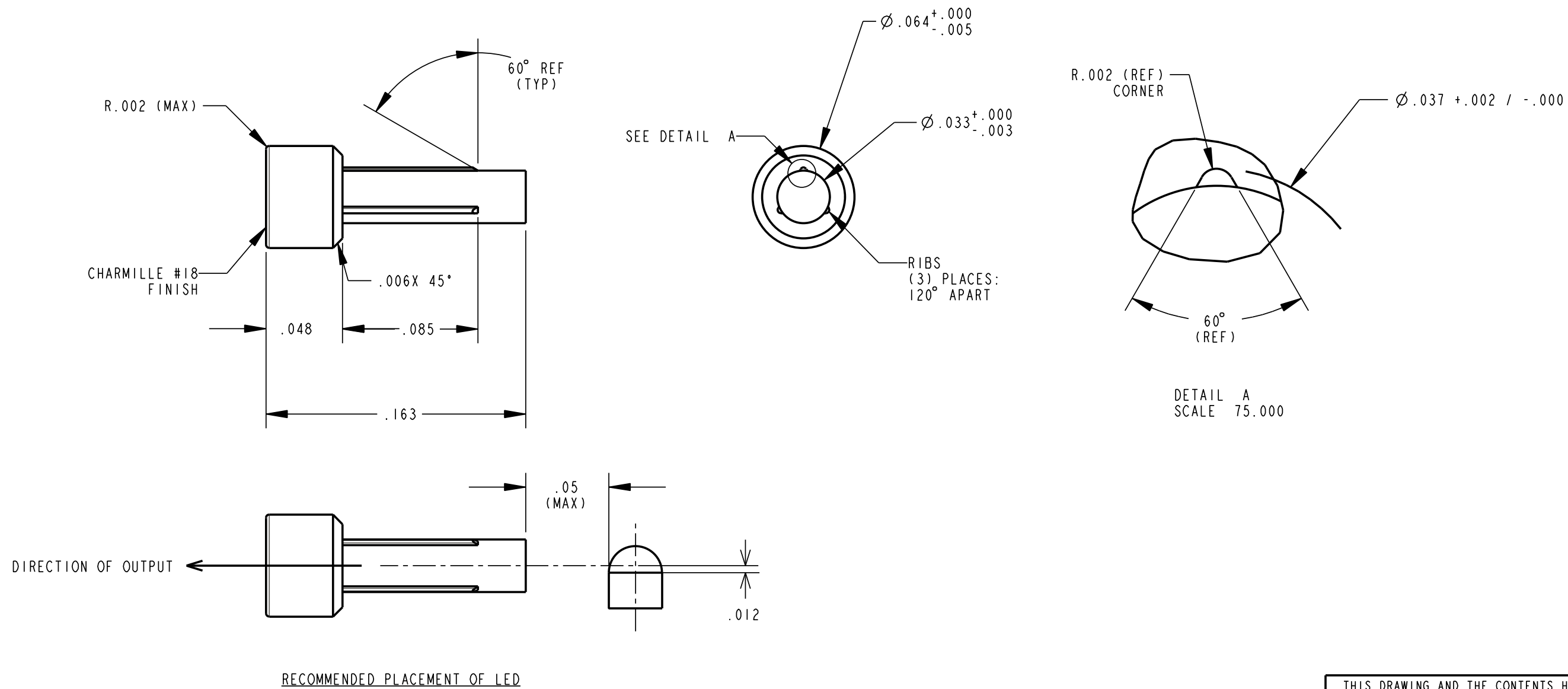


A	—	NEW RELEASE	MC	- - -	N.S.	6-24-
B	—	.223 ±.005 WAS .153 ±.005 AND DELETED .006 X 45° CHAMFER	MC	- - -	M.C.	7-6-
C	—	ADDED LED PLACEMENT SKETCH, ADDED "(REF)" TO 60°, DELETED TOL ±.002 FROM DIM .048 & DELETED SECOND NOTE	MC	- - -	M.C.	8-10-
D	—	O.A.L .163 WAS .223 & .005 TOL WAS —.002 FOR DIM Ø.064	MC	- - -	M.C.	8-13-
E	—	UPDATED TITLE BLOCK	TWC			



NOTES:
1. COMPONENT TO BE MOLDED IN A CLEAR 87% TRANSMISSIVE POLYCARBONATE.
2. MARKING FOR LOGO AND CAVITY IDENTIFICATION (IF APPLICABLE NOT TO EXCEED .003).

THIS DRAWING AND THE CONTENTS HEREIN ARE CONFIDENTIAL AND THE SOLE PROPERTY OF DIALIGHT. REPRODUCTION OF THIS DRAWING OR CONSTRUCTION OF ANY PARTS WITHIN THIS DRAWING ARE FORBIDDEN WITHOUT THE WRITTEN CONSENT OF DIALIGHT.					
SCALE: 14.000		DRAWING NUMBER C-15791		REV E	
ALL DIM'S IN: INCHES (MM)					
TOLERANCES: UNLESS OTHERWISE SPECIFIED		TITLE LIGHTPIPE			
FRACTIONS: ±1/64					
DECIMALS (.XX): ±.01		MATERIAL POLYCARBONATE			
DECIMALS (.XXX): ±.005					
DECIMALS (.XXXX): ±.0005		Dialight 1501 ROUTE 34 SOUTH FARMINGDALE, NJ 07			
ANGLES: ±1°					
FINISH: -		SHEET 1 OF 2			
FSCM 83330					
		FAMILY TABLE:			