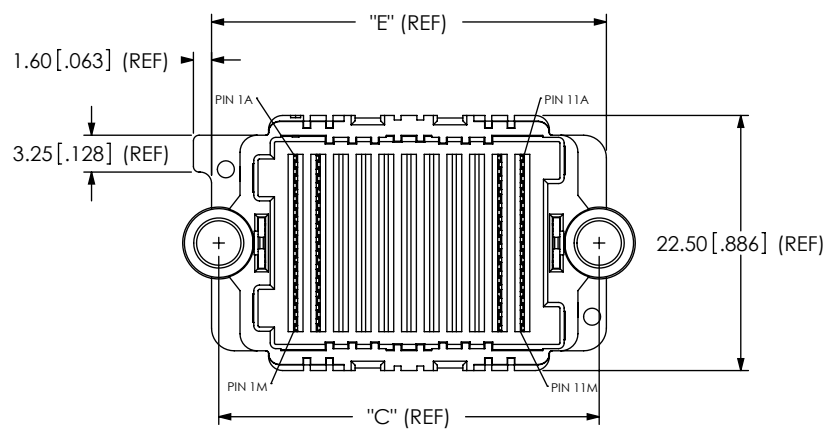


DO NOT SCALE FROM THIS PRINT



HDAF-XX-XX.X-X-13-X-XX

No OF POSITIONS (13 ROWS PER POSITION)
 -11
 -15
 -23

LEAD STYLE
 -08.0: 8MM
 -18.0: 18MM

PLATING SPECIFICATION
 -S: 30μ" GOLD IN MATING AREA, MATTE TIN ON TAIL AND WELD TABS

OPTION
 -P: PICK & PLACE PAD (USE MPP-26-01-N)
 -TR: TAPE & REEL (ONLY TOOLED FOR HDAF-23-08.0-X-13-X-X)

SOLDER CHARGE MATERIAL Ⓢ
 -1: 63% TIN / 37% LEAD
 -2: 95.5% TIN / 3.8% SILVER 0.7% COPPER (LEAD FREE)

No OF ROWS
 -13

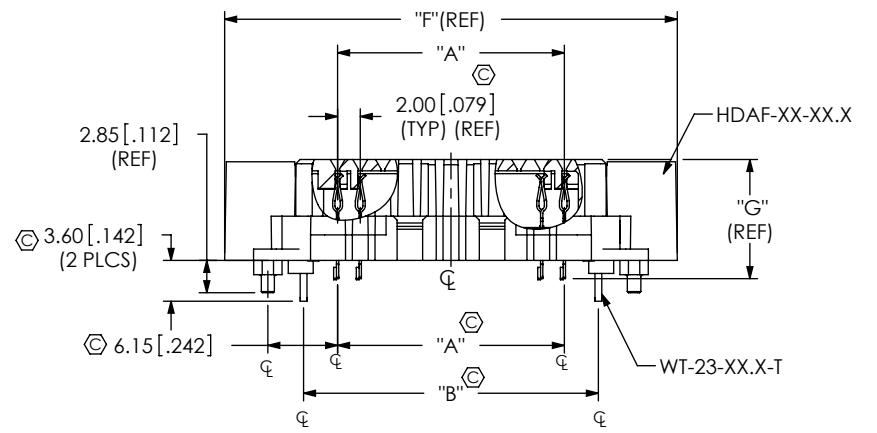
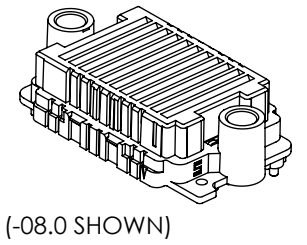
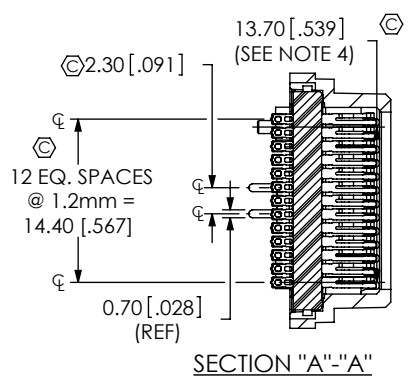
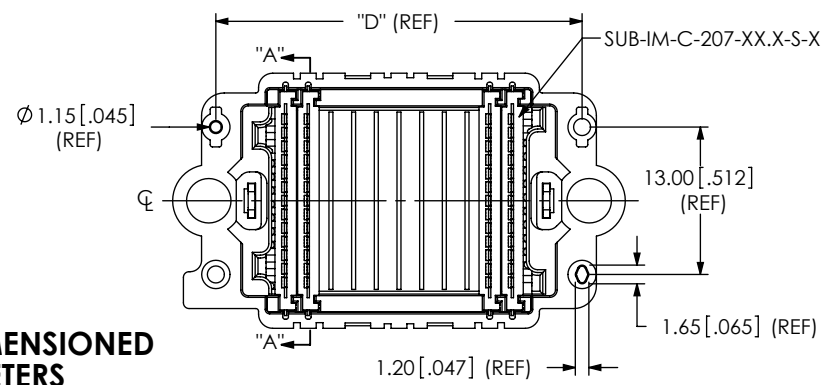
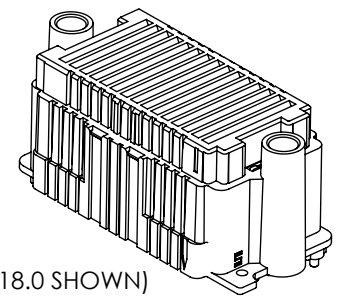


TABLE 1

STYLE	"BODY CALLOUT"	"CONTACT WAFER"	"SOLDER NAIL"
-08.0	HDAF-XX-08.0	SUB-IM-C-207-08.0-S-X	WT-23-08.0-T
-18.0	HDAF-XX-18.0	SUB-IM-C-207-18.0-S-X	WT-23-18.0-T

TABLE 2
STACK HEIGHT

HDAF LEAD STYLE	HDAM LEAD STYLE	
	-12.0	-17.0
-08.0	20.0MM	25.0MM
-18.0	30.0MM	35.0MM



DESIGNED & DIMENSIONED IN MILLIMETERS (INCHES FOR REFERENCE ONLY)

FIG 1
 -11: 11 POSITION
 (HDAF-11-08.0-X-13-X-X SHOWN)
 (SOME WAFERS NOT SHOWN FOR CLARITY)

NOTES:

1. Ⓢ REPRESENTS A CRITICAL DIMENSION.
2. MINIMUM PUSHOUT FORCE: 2.22N [.5 LB]. FOR WAFERS AND WELD TABS.
3. CONNECTORS TO BE PACKAGED IN TRAYS IF -TR OPTION IS NOT SELECTED, -TR OPTION IS ONLY TOOLED FOR HDAF-23-08.0-X-13-X-X.
4. DIMENSION FROM Ⓢ OF END TAIL TO Ⓢ OF -A PIN.

<p>UNLESS OTHERWISE SPECIFIED, DIMENSIONS ARE IN MILLIMETERS (INCHES). TOLERANCES ARE: DECIMALS ANGLES .X: ±0.3 [.01] .XX: ±0.13 [.005] .XXX: ±0.051 [.0020]</p>	<p>PROPRIETARY NOTE THIS DOCUMENT CONTAINS INFORMATION CONFIDENTIAL AND PROPRIETARY TO SAMTEC, INC. AND SHALL NOT BE REPRODUCED OR TRANSFERRED TO OTHER DOCUMENTS OR DISCLOSED TO OTHERS OR USED FOR ANY PURPOSE OTHER THAN THAT WHICH IT WAS OBTAINED WITHOUT THE EXPRESSED WRITTEN CONSENT OF SAMTEC, INC.</p>	<p>samtec 520 PARK EAST BLVD, NEW ALBANY, IN 47150 PHONE: 812-944-6733 FAX: 812-948-5047 e-Mail: info@SAMTEC.com code: 55322</p>
<p>MATERIAL: DO NOT SCALE DRAWING INSULATOR: LCP COLOR: BLACK CONTACT: COPPER ALLOY WAFER MATERIAL: LCP, COLOR: BLACK PICK AND PLACE PAD: COPPER ALLOY WELD TAB: BRASS</p>	<p>SHEET SCALE: 1:5:1</p>	<p>DESCRIPTION: 2.0MM PITCH HD ARRAY SOCKET ASSEMBLY DWG. NO. HDAF-XX-XX.X-X-13-X-XX BY: D KNOWLDEN 7/14/2005 SHEET 1 OF 3</p>

TABLE 3								
No. OF POS.	LEAD STYLE	"A"	"B"	"C"	"D"	"E"	"F"	"G"
11	08.0	20.0 [1.787]	26.0 [1.02]	33.55 [1.321]	32.30 [1.272]	34.82 [1.371]	39.92 [1.572]	10.51 [1.414]
15	08.0	28.0 [1.102]	34.0 [1.34]	41.55 [1.636]	40.30 [1.587]	42.82 [1.686]	47.92 [1.887]	10.51 [1.414]
23	08.0	44.0 [1.732]	50.0 [1.97]	57.55 [2.266]	56.30 [2.217]	58.82 [2.316]	63.92 [2.517]	10.51 [1.414]
11	18.0	20.0 [1.787]	26.0 [1.02]	33.55 [1.321]	32.30 [1.272]	34.82 [1.371]	39.92 [1.572]	20.51 [1.807]
15	18.0	28.0 [1.102]	34.0 [1.34]	41.55 [1.636]	40.30 [1.587]	42.82 [1.686]	47.92 [1.887]	20.51 [1.807]
23	18.0	44.0 [1.732]	50.0 [1.97]	57.55 [2.266]	56.30 [2.217]	58.82 [2.316]	63.92 [2.517]	20.51 [1.807]

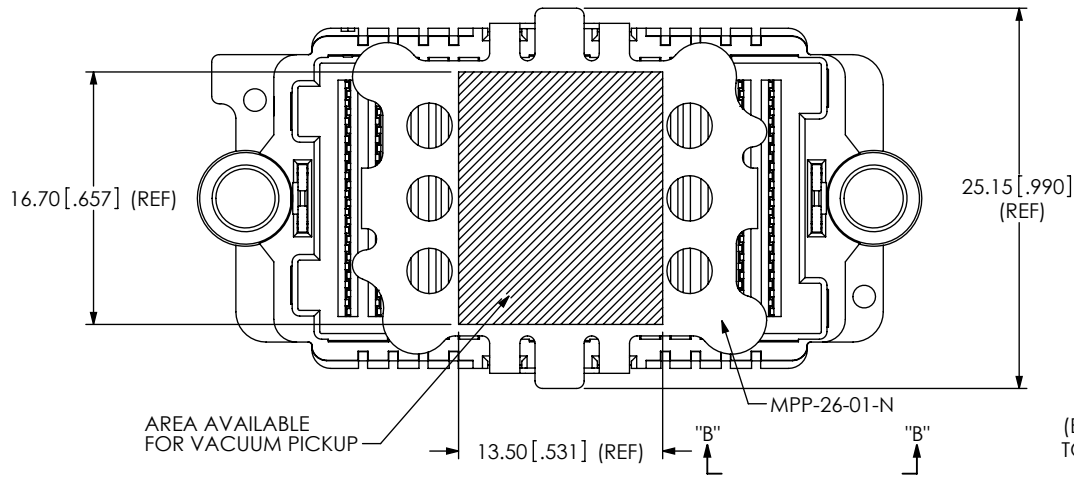
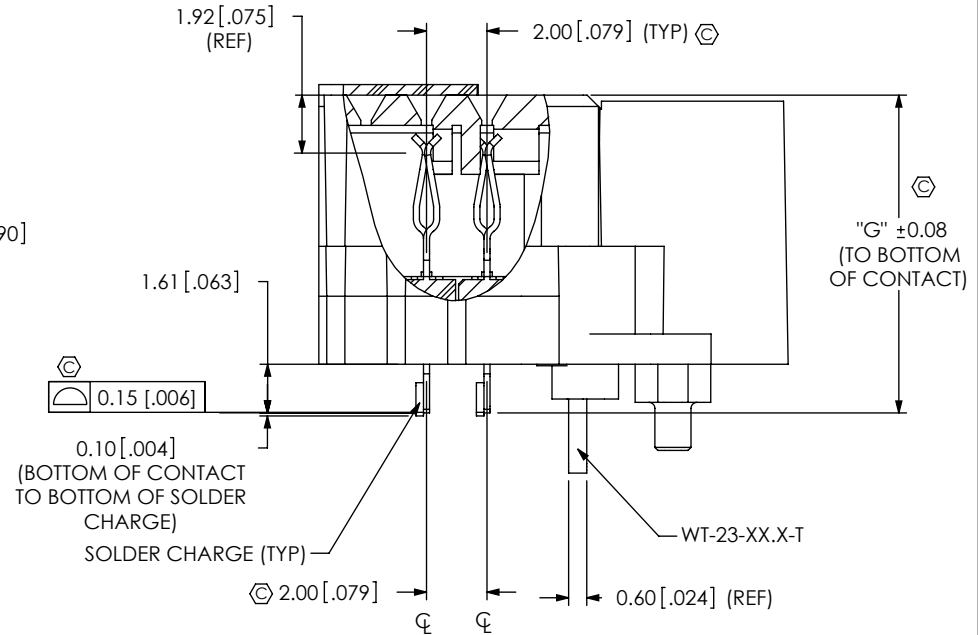
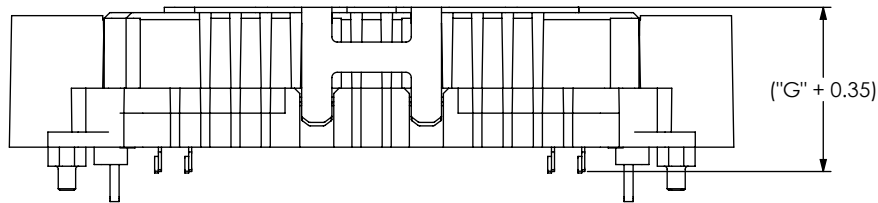


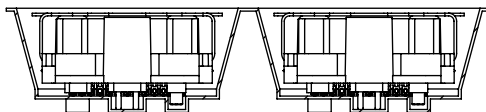
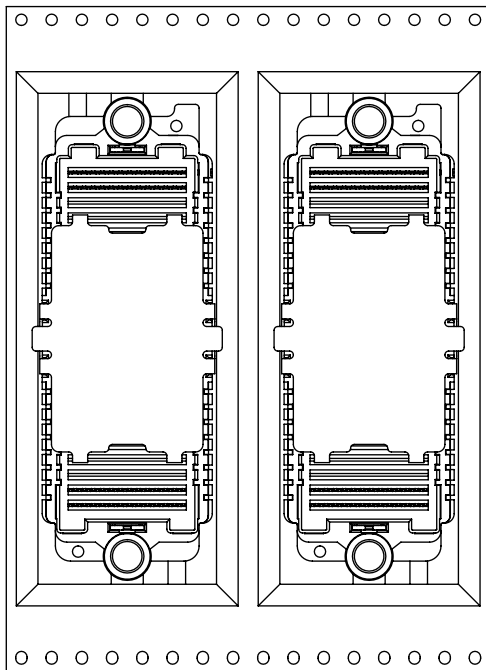
FIG 2
-15: 15 POSITION
(HDAF-15-08.0-X-13-X-P SHOWN)
(SOME WAFERS NOT SHOWN FOR CLARITY)



VIEW "B"-"B"
SCALE 4:1

F:\DWG\MISC\MKTG\HDAF-XX-XX.X-X-13-X-XX-MKT.SLDDRW

<p>PROPRIETARY NOTE THIS DOCUMENT CONTAINS INFORMATION CONFIDENTIAL AND PROPRIETARY TO SAMTEC, INC. AND SHALL NOT BE REPRODUCED OR TRANSFERRED TO OTHER DOCUMENTS OR DISCLOSED TO OTHERS OR USED FOR ANY PURPOSE OTHER THAN THAT WHICH IT WAS OBTAINED WITHOUT THE EXPRESSED WRITTEN CONSENT OF SAMTEC, INC.</p> <p>DO NOT SCALE DRAWING</p> <p>SHEET SCALE: 1:1</p>	<p>520 PARK EAST BLVD, NEW ALBANY, IN 47150 PHONE: 812-944-6733 FAX: 812-948-5047 e-Mail: info@SAMTEC.com code: 55322</p>
	<p>DESCRIPTION: 2.0MM PITCH HD ARRAY SOCKET ASSEMBLY</p> <p>DWG. NO. HDAF-XX-XX.X-X-13-X-XX</p>
	<p>BY:D KNOWLDEN 7/14/2005 SHEET 2 OF 3</p>



USER DIRECTION OF UNREELING →
POCKET NOT DETAILED

-TR PACKAGING VIEW
(ONLY TOOLED FOR HDAF-23-08.0-X-13-X-X)

PROPRIETARY NOTE
THIS DOCUMENT CONTAINS INFORMATION
CONFIDENTIAL AND PROPRIETARY TO
SAMTEC, INC. AND SHALL NOT BE REPRODUCED
OR TRANSFERRED TO OTHER DOCUMENTS OR
DISCLOSED TO OTHERS OR USED FOR ANY
PURPOSE OTHER THAN THAT WHICH IT WAS
OBTAINED WITHOUT THE EXPRESSED WRITTEN
CONSENT OF SAMTEC, INC.

DO NOT SCALE DRAWING

SHEET SCALE: 1:1



520 PARK EAST BLVD, NEW ALBANY, IN 47150
PHONE: 812-944-6733 FAX: 812-948-5047
e-Mail: info@SAMTEC.com code: 55322

DESCRIPTION:
2.0MM PITCH HD ARRAY SOCKET ASSEMBLY

DWG. NO.
HDAF-XX-XX.X-X-13-X-XX

BY: D KNOWLDEN 7/14/2005 SHEET 3 OF 3