

DESIGNED & DIMENSIONED
IN INCHES [MILLIMETERS]

SNT-100-XX-X-X

BODY SPECIFICATION
-100

OPTION
-H: HANDLE
(SEE -H OPTION)

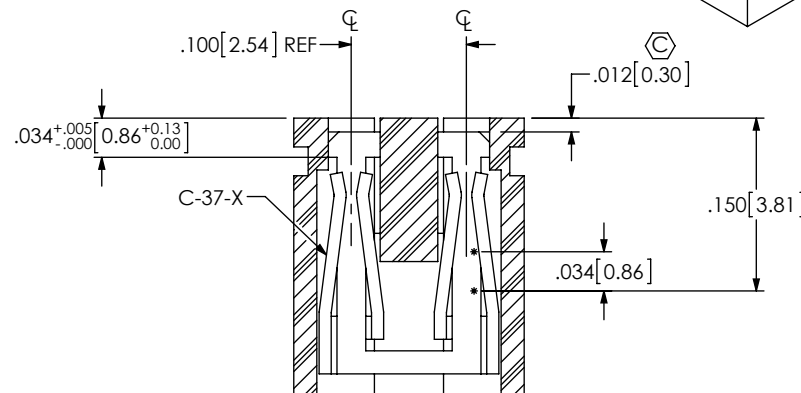
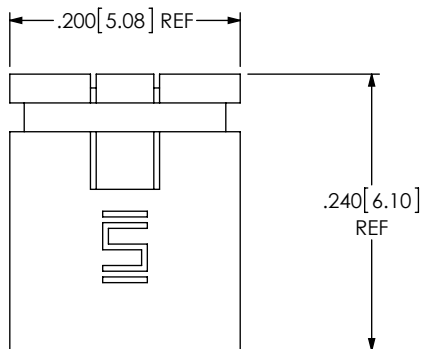
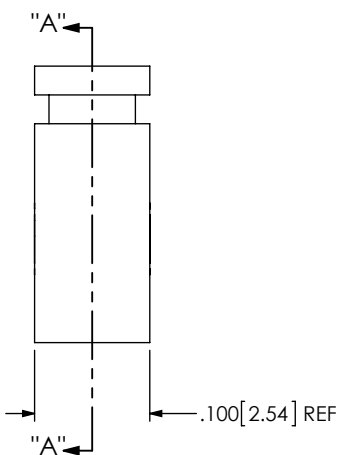
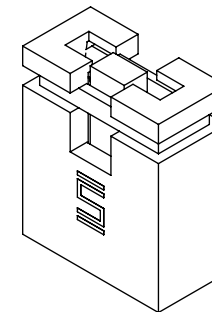
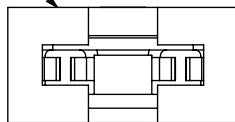
COLOR SPECIFICATION

BK = BLACK
RD = RED
BL = BLUE
YW = YELLOW
OR = ORANGE

PLATING SPECIFICATION

-T: MATTE TIN CONTACT AND TAIL
-G: 10μ" GOLD IN CONTACT
AREA, 10μ" GOLD ON TAIL
-H: 30μ" HEAVY GOLD IN CONTACT
AREA, 3μ" GOLD ON TAIL.

SNT-100-XX



SECTION "A"-A"
SCALE 6 : 1

FIG 1
SNT-100-XX-X-X SHOWN

NOTES:

1. Ⓢ REPRESENTS A CRITICAL DIMENSION.
2. MINIMUM PUSHOUT FORCE 1.0 LB (4.44N)

UNLESS OTHERWISE SPECIFIED,
DIMENSIONS ARE IN INCHES.
TOLERANCES ARE:
DECIMALS ANGLES
.XX: ±.01 [0.3] 2°
.XXX: ±.005 [0.13]
.XXXX: ±.0020 [0.051]

PROPRIETARY NOTE
THIS DOCUMENT CONTAINS INFORMATION
CONFIDENTIAL AND PROPRIETARY TO
SAMTEC, INC. AND SHALL NOT BE REPRODUCED
OR TRANSFERRED TO OTHER DOCUMENTS OR
DISCLOSED TO OTHERS OR USED FOR ANY
PURPOSE OTHER THAN THAT WHICH IT WAS
OBTAINED WITHOUT THE EXPRESSED WRITTEN
CONSENT OF SAMTEC, INC.



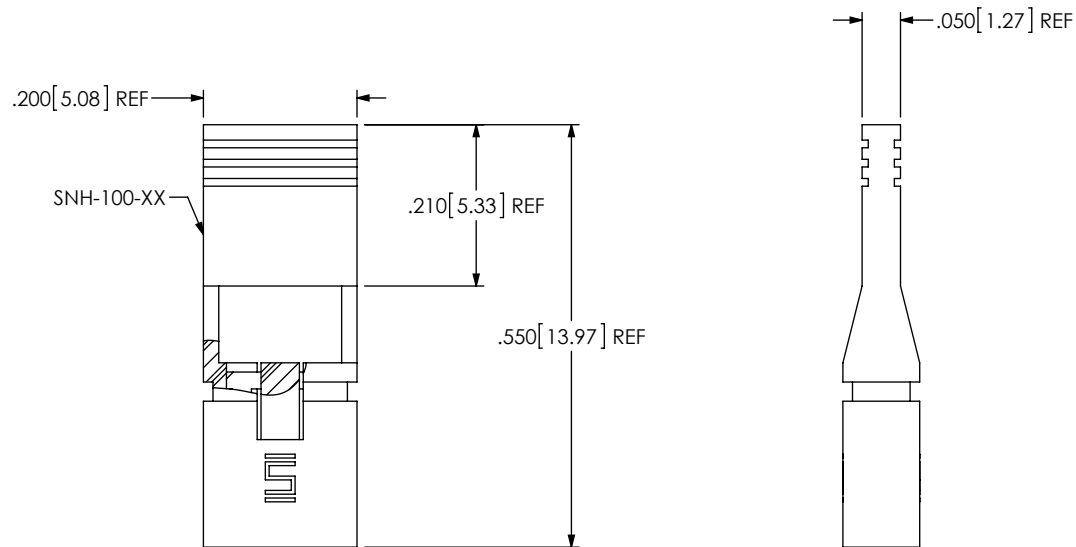
520 PARK EAST BLVD., NEW ALBANY, IN 47150
PHONE: 812-944-6733 FAX: 812-948-5047
e-Mail: info@SAMTEC.com code 55322

MATERIAL: DO NOT SCALE DRAWING SHEET SCALE: 8:1
INSULATOR: PBT, UL 94V-0
COLOR: SEE COLOR SPECIFICATION
CONTACT: COPPER ALLOY

DESCRIPTION:
.100 [2.54] C.L. SHUNT ASSEMBLY

DWG. NO.
SNT-100-XX-X-X

BY: KOLB 1/31/90 SHEET 1 OF 2



-H OPTION
 (SAME AS FIG 1 EXCEPT AS SHOWN)
 SNT-100-XX-X-H SHOWN

PROPRIETARY NOTE

THIS DOCUMENT CONTAINS INFORMATION CONFIDENTIAL AND PROPRIETARY TO SAMTEC, INC. AND SHALL NOT BE REPRODUCED OR TRANSFERRED TO OTHER DOCUMENTS OR DISCLOSED TO OTHERS OR USED FOR ANY PURPOSE OTHER THAN THAT WHICH IT WAS OBTAINED WITHOUT THE EXPRESSED WRITTEN CONSENT OF SAMTEC, INC.



520 PARK EAST BLVD, NEW ALBANY, IN 47150
 PHONE: 812-944-6733 FAX: 812-948-5047
 e-Mail info@SAMTEC.com code 55322

SHEET SCALE: 6:1

DESCRIPTION: $.100 [2.54] \text{ C.L. SHUNT ASSEMBLY}$

DWG. NO. **SNT-100-XX-X-X**

BY: KOLB 1/31/90

SHEET 2 OF 2