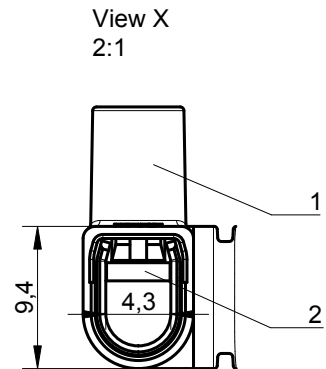
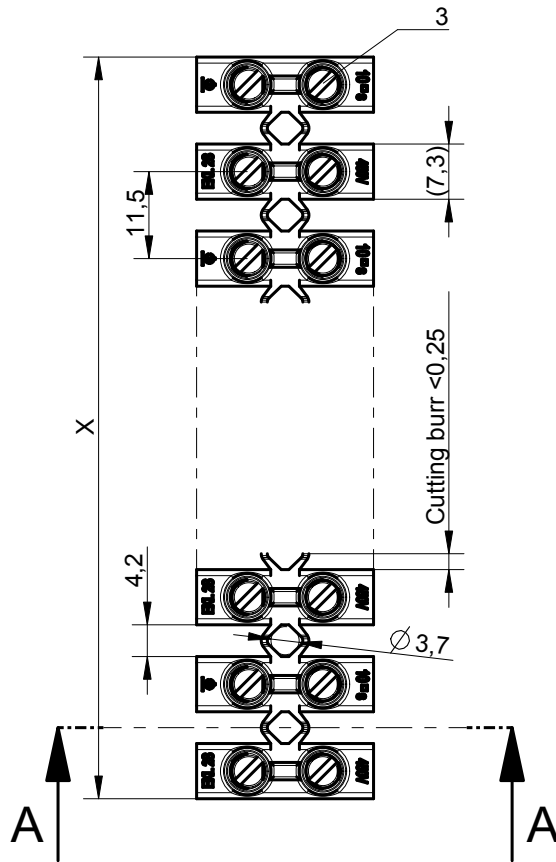
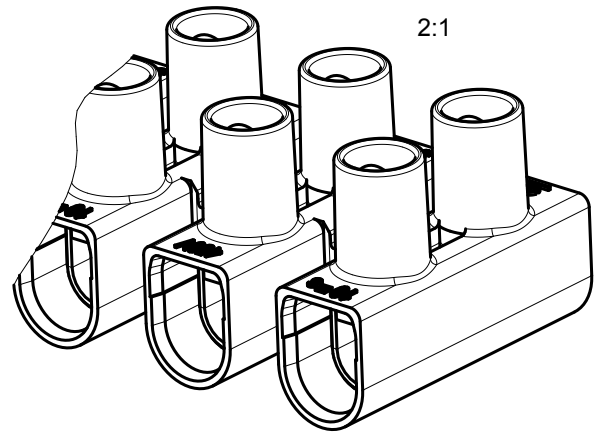
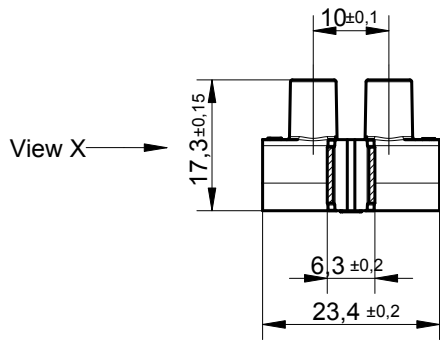


Section A-A



Measure without cutting burr!

12	133,8mm ±0,6
11	122,3mm ±0,6
10	110,8mm ±0,5
9	99,3mm ±0,5
8	87,8mm ±0,5
7	76,3mm ±0,4
6	64,8mm ±0,4
5	53,3mm ±0,3
4	41,8mm ±0,3
3	30,3mm ±0,2
2	18,8mm ±0,2
1	7,3mm ±0,1
Poles	Measure X

Ratings according to EN 60 998
 Nominal voltage: 450V
 Nominal clamping area: 2,5[□]s - 10[□]s
 Ambient temperature: T80
 Glow wire temperature: 850°C

3	Screws	St chrom
2	Inserts	St sn
1	Insulating part	PP
Pos.	Description	Material

02 12.05.2017 Kreuzbichler CR-2018-001: Gravur 10² auf 10²s

Issue no. Issue date Issue by Issue chkd. by Issue text

Gen. tolerance: EN 22768-1m

Sheetm. part tol.: DIN 6930-2 f

Plastic part tol.: DIN 16901-130

Info.: -

Surface treatment/aftertreatment: -

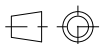
Scale: 1:1

Projection

Project: EUREKAEL 2

Basic material: see part list

Size: A4



Name: Kreuzbichler

Description

Document

I

Date: 18.10.2006

EKL 2 S

88717774

02

Chkd. by: -

Sammelzeichnung

Chkd. date: -

Copyright according to ISO 16016

www.electroterminal.com