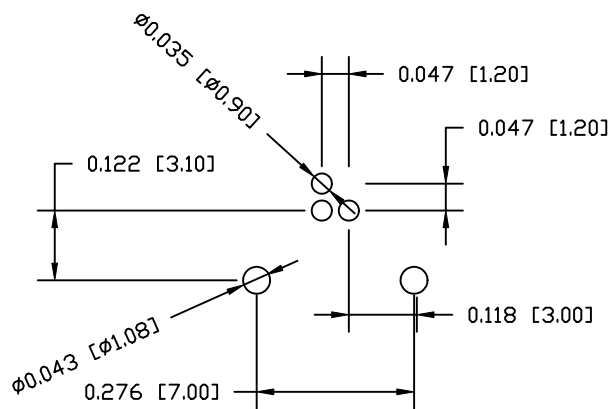
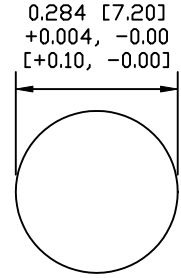


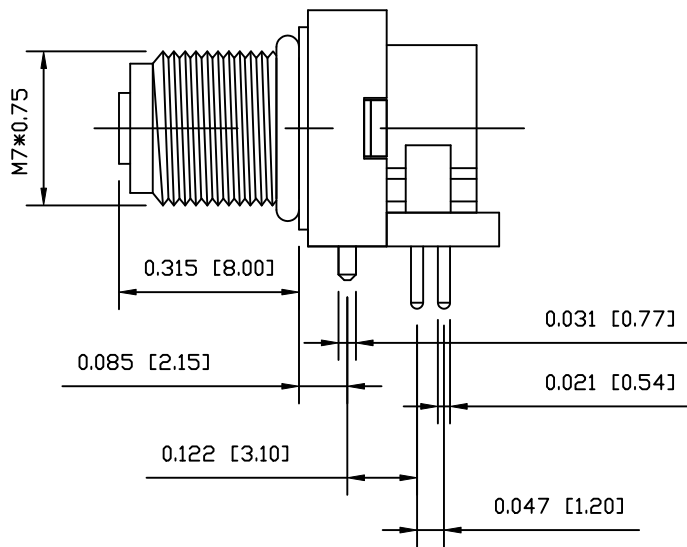
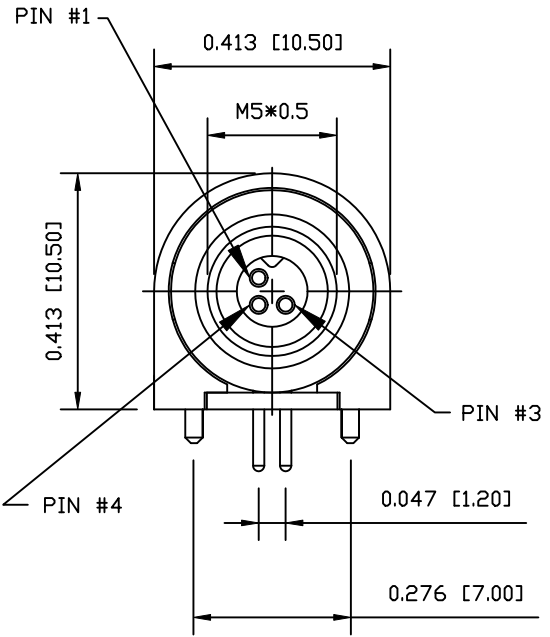
NUT



P.C.B LAYOUT



PANEL CUT-OUT



NOTE:

MATERIAL

HOUSING:  
CONTACT:  
NUT:  
O-RING:  
BACK HOUSING  
DOWN HOUSING

PBT UL94V-0, BLACK  
BRASS  
BRASS  
NBR, BLACK  
PBT UL94V-0, BLACK  
PBT UL94V-0, BLACK

FINISH

CONTACT:

GOLD PLATED  
OVER 50µ" NICKEL  
NICKEL PLATED

NUT:

ELECTRICAL

RATED CURRENT: 1A  
RATED VOLTAGE: 60V  
INSULATION RESISTANCE: 100 mOhms MIN.  
CONTACT RESISTANCE: 10 MOhms MAX.  
WATER PROOF: IP67

ENVIRONMENT

OPERATION TEMPERATURE: -40°C TO +85°C

853-003-213R00Y

1 = GOLD FLASH  
4 = 10µ" GOLD

RoHS COMPLIANT

DO NOT SCALE FROM DRAWING



THESE DRAWINGS AND SPECIFICATIONS ARE THE PROPERTY OF NorComp AND SHALL NOT BE REPRODUCED, COPIED OR USED AS THE BASIS FOR THE MANUFACTURE OR SALE OF APPARATUS WITHOUT WRITTEN PERMISSION.

DRAWN: M. SIGMON

DATE: 03-03-16

CHECKED:

DATE:

NorComp

SCALE: NTS

SHEET 1 OF 1

REV 3

DWG NO.

853-003-213R00Y