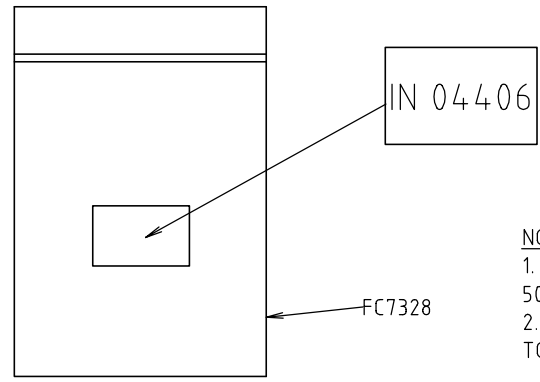
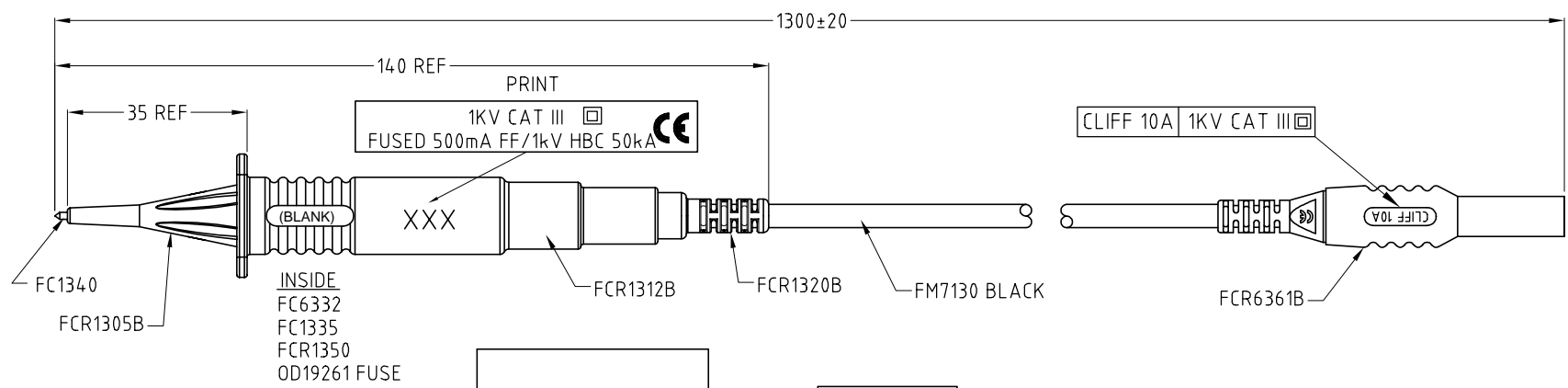
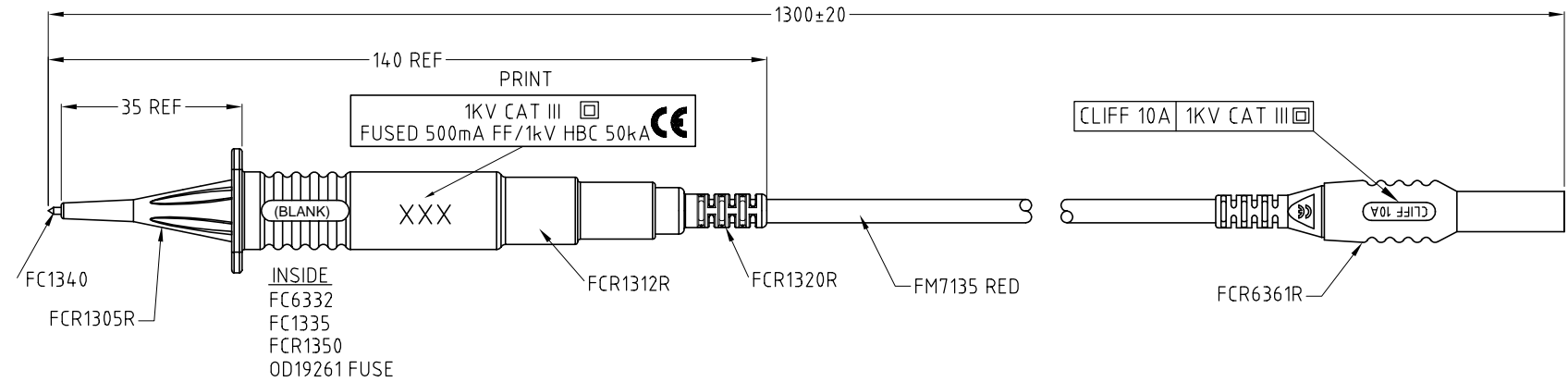


ISS.	AMEND	DATE
1	1st DRAWN	02/08/05
2	4mm PLUGS CHANGED	25/07/14

CUT 1145 STRIP ENDS 10 AND 6mm



- NOTES**
- FUSE: TO BE FITTED WITH A 1kV HBC 50kA 500mA 'FF' TYPE FUSE. (OD19261)
 - PACKAGING: KITS SHOULD BE PACKED IN ZIP TOP POLY BAG AND LABELED.

RoHS COMPLIANT
TOLERANCE
NO DEC. PLACE ±
1 DEC. PLACE ±
2 DEC. PLACE ±
HOLE Ø ±
ANGLES ±
UNLESS OTHERWISE STATED
DO NOT SCALE

Cliff Electronic Components Ltd.
 76 Holmethorpe Avenue, Holmethorpe Industrial Estate,
 Redhill, Surrey, RH1 2PF, England, UK
 Tel: 01737-771375 Fax: 01737-766012 Website: www.cliffuk.co.uk

THE CONTENTS OF THIS DOCUMENT MUST NOT BE COPIED OR DISCLOSED TO A 3rd PARTY WITHOUT WRITTEN PERMISSION OF CLIFF UK. © 2005

DIMENSIONS IN MILLIMETERS UNLESS OTHERWISE STATED. WORK TO DIMENSIONS. REMOVE ALL BURRS. IF IN DOUBT ASK.

MATERIAL: COMPOSITE

FINISH: CLEAN

DRAWN: C.A.M.J.

APPROVED: R.W.T.

3rd ANGLE PROJECTION:

TITLE: FUSED PROBE KIT CPC IN04406

DRWG. No. **CIH20601**

FORM: A4DRWGH