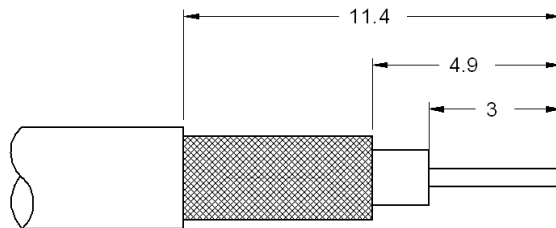
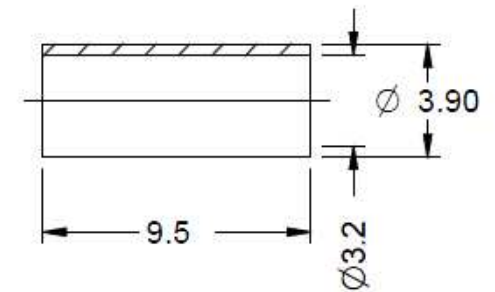
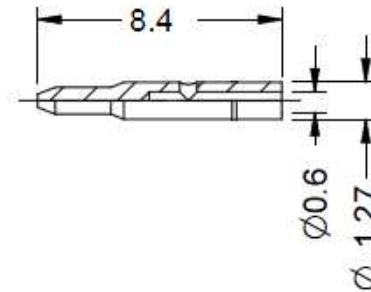
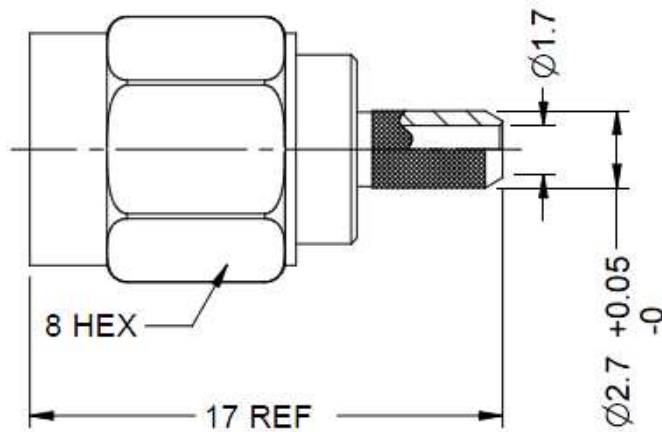




DESCRIPTION: SMA CRIMP PLUG RG161,174,188
 MODEL NUMBER: 28-5020
 APPLICATION: FOR CABLE RG161/U, 174, 188, 316
 CRIMP TOOL: 24-328P
 IMPEDANCE: 50 OHM
 FREQUENCY RANGE: 0-12.4 GHz
 MATERIAL: BODY BRASS NICKEL PLATED
 CONTACT BRASS GOLD PLATED
 FERRULE COPPER NICKEL PLATED
 RoHS COMPLIANCE: YES
 TECHNICAL DETAIL: N/A



CABLE STRIP DIMENSIONS

	3RD ANGLE PROJECTION 	AIM-Cambridge	
	RoHS 2002/95/EC <small>UNLESS OTHERWISE SPECIFIED UNITS: METRIC</small>	Title: SMA CRIMP PLUG RG161,174,188	
<small>This PROPRIETARY Document is property of Cinch Connectivity Solutions. It is confidential in nature, non-transferable, and issued with the clear understanding that it is not traced or copied without permission and is returnable upon demand.</small>	.XX ±.51 .XXX ±.127 ANGLES ±2°	Model No. 28-5020	Size A
<small>INTERPRET DRAWING IN ACCORDANCE WITH ASME Y14.5-2009.</small>	DO NOT SCALE DRAWING	Date: 8/16/2013	Sheet 1 of 1