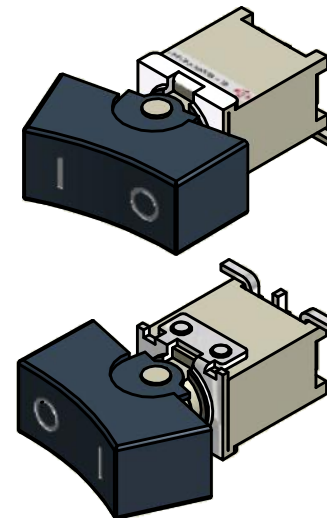
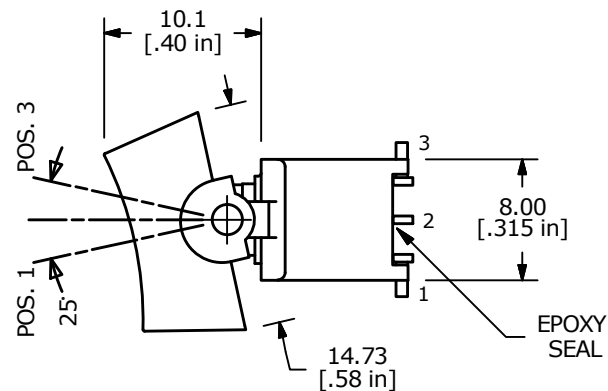
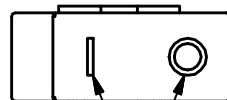


RECOMMENDED
P.C.B. LAYOUT

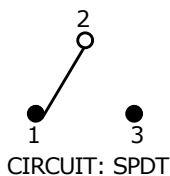
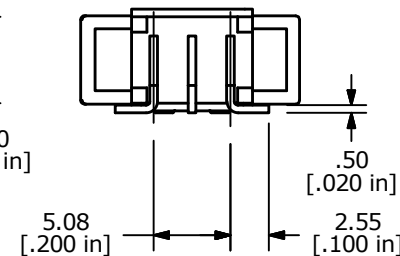
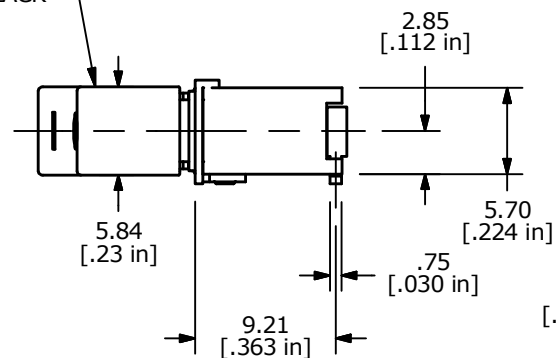


| ▲ SWITCH FUNCTION | | |
|-------------------|--------|--------|
| POS. 1 | POS. 2 | POS. 3 |
| | | |
| ON | NONE | ON |
| 2-3 | OPEN | 2-1 |



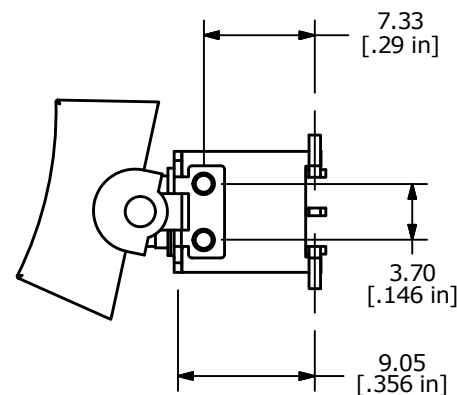
I/O SYMBOL (Z103)
COLOR: WHITE

ACTUATOR
Color: BLACK



NOTES:

1. ALL DIMENSIONS IN MM[INCH].
2. GENERAL TOLERANCE: X.X = ± 0.4
X.XX = ± 0.25
3. TERM. NOS. FOR REFERENCE ONLY.
4. ELECTRICAL LIFE: 50,000 MAKE-AND-BREAK CYCLES AT FULL LOAD.
- ▲ 5. CONTACT MATERIAL: SILVER
6. CONTACT RATING: 1 AMP @250 VAC
3 AMPS @120 VAC OR 28 VDC
7. CONTACT RESISTANCE: 20MILLI-OHMS MAX. INITIAL @2-4 VDC
8. OPERATING TEMPERATURE: -30°C to 85°C.
- ▲ 9. TERMINALS TO BE COPLANAR TO WITHIN 0.1[.004]
10. ▲ DENOTES CRITICAL PARAMETER
11. 2002/95/EC (ROHS) COMPLIANT
12. PACKAGING: TAPE AND REEL 450 PCS. PER REEL



| | | | | |
|--|----------------|-------|-------------|-------|
| TITLE 400BWMSP1R2BLKSM6QE-Z103 (I/O Horiz) | | | | |
| SCALE 2:1 | DATE 4/13/2016 | DR MW | DWG T460008 | REV A |

| | | | | |
|-----|--------|-------------|---------|----|
| A | 22266 | NEW RELEASE | 4/13/16 | MW |
| REV | PCR NO | DESCRIPTION | DATE | BY |

THE INFORMATION CONTAINED IN THIS DOCUMENT IS PROPRIETARY TO E-SWITCH AND IS NOT TO BE COPIED OR TRANSFERRED