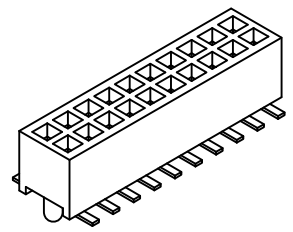
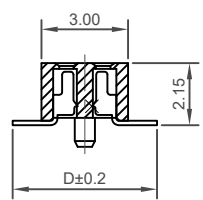
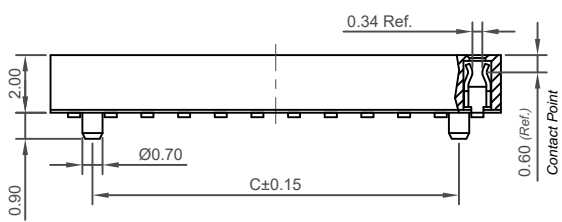


Recommended PCB Layouts

▨ Solder Area



CONTACTS	DIMENSIONS		
	A	B	C
06	2.54	4.05	1.27
08	3.81	5.32	2.54
10	5.08	6.59	3.81
12	6.35	7.86	5.08
14	7.62	9.13	6.35
16	8.89	10.40	7.62
18	10.16	11.67	8.89
20	11.43	12.94	10.16
22	12.70	14.21	11.43
24	13.97	15.48	12.70
26	15.24	16.75	13.97
28	16.51	18.02	15.24
30	17.78	19.29	16.51
32	19.05	20.56	17.78
34	20.32	21.83	19.05
36	21.59	23.10	20.32
38	22.86	24.37	21.59
40	24.13	25.64	22.86
42	25.40	26.91	24.13
44	26.67	28.18	25.40
46	27.94	29.45	26.67
48	29.21	30.72	27.94
50	30.48	31.99	29.21
52	31.75	33.26	30.48
54	33.02	34.53	31.75
56	34.29	35.80	33.02
58	35.56	37.07	34.29
60	36.83	38.34	35.56
62	38.10	39.61	36.83
64	39.37	40.88	38.10
66	40.64	42.15	39.37
68	41.91	43.42	40.64
70	43.18	44.69	41.91
72	44.45	45.96	43.18
74	45.72	47.23	44.45
76	46.99	48.50	45.72
78	48.26	49.77	46.99
80	49.53	51.04	48.26

Specifications 规格

Material 物料

Insulator Material 绝缘体: LCP, UL 94V-0  
 Contact Terminal 接触端子: Phosphor Bronze

Plating 电镀

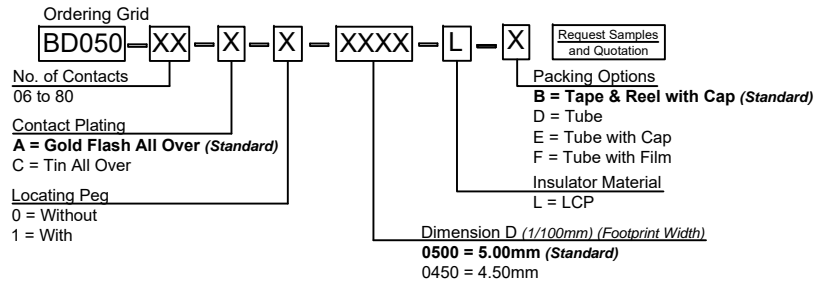
See Ordering Grid

Electrical 电气

Current Rating 电流额定值: 1A  
 Contact Resistance 接触电阻值: 20 mΩ max.  
 Insulating Resistance 绝缘电阻值: 1000 MΩ min.  
 Dielectric Withstand Voltage 耐电压: 500V AC

Mechanical & Environmental 机械 & 环境

Operating Temperature 工作温度: -40°C to +105°C  
 Soldering Process 可焊性:  
 IR Reflow 回流焊: 260°C for 10 sec.  
 Wave 波峰焊: 250°C for 5-10 sec  
 Manual Solder 人工焊接: 350°C for 3-5 sec



Mates with 配套之母座

(Subject to pin length 在端子长度适合的条件下)  
 BD025 BD030 BD035  
 BD038 BD040 BD095

For bottom entry applications, stringent soldering control & pin alignment are required as lead to pad misalignment could cause incorrect mating.

Part Number		Product Description	
BD050		1.27mm Pitch Socket	
Drawing Date		Dual Row, Surface Mount, Low Profile, Dual Entry	
28th December 2007			
By	AJO	Tolerances (Except as Noted)	Units:
Detail	B2B PCN 002 1.27mm Socket	Length X: ± 0.30 Angle X: ± 5° X.X ± 0.20 X.XX ± 0.15 X.XXX ± 0.10	Metric (mm)
Revision	J	X.XX ± 2° X.XXX ± 1° X.XXXX ± 0.5°	RoHS COMPLIANT 2011/RS/IEU Deca-BDE
Date	13/12/12	3rd Angle Projection	This drawing is confidential and copyright of Global Connector Technology, Ltd (GCT). This drawing must not be copied or disclosed without written consent. E & OE

**GCT**  
 Global Connector Technology  
 www.gct.co

Not to Scale	Drawn By PKN	Sheet No. 1/1
--------------	--------------	---------------