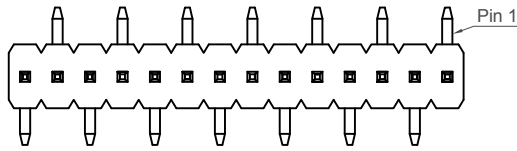
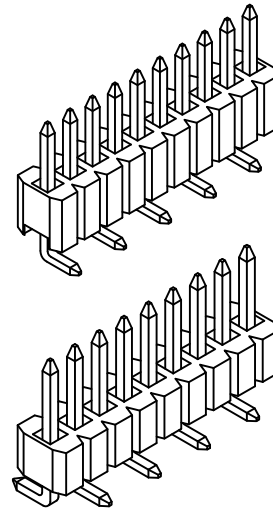
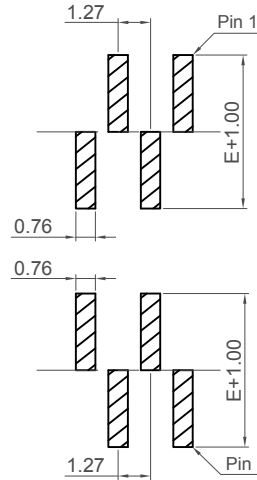
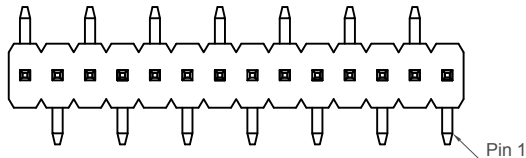


R1 Type

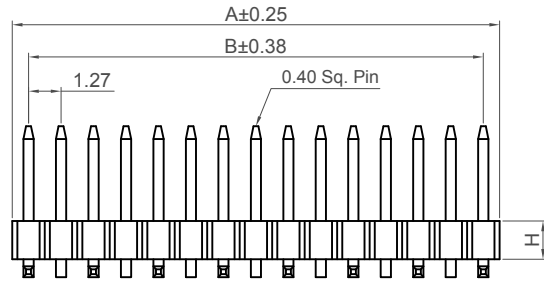
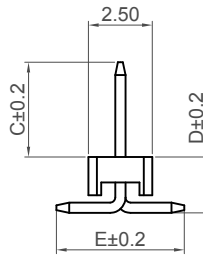


R2 Type



Recommended PCB Layouts

Solder Area



Specifications 规格

Material 物料

Insulator 绝缘体: Polymer, LCP, UL94V-0
Polyamide, Nylon 6T, UL94V-0

Contact 接触: Copper Alloy

Plating 电镀

See Ordering Grid

Electrical 电气

Current Rating 电流额定值: 1A per pin
Contact Resistance 接触电阻值: 20 mΩ max.
Insulating Resistance 绝缘电阻值: 1000 MΩ min.
Dielectric Withstand Voltage 耐电压: 300V AC

Mechanical & Environmental 机械 & 环境

Operating Temperature 工作温度: -40°C to +105°C

Soldering Process 可焊性: (LCP & Nylon 6T)

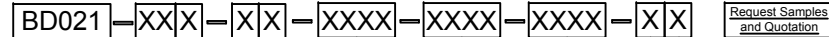
IR Reflow 回流焊: 260°C for 10 sec.
Manual Solder 人工焊接: 350°C for 3-5 sec

Mates with 配套之母座 (Subject to pin length)

BD074 BD075 BD080 BD090

No. of Contacts	Dimensions		No. of Contacts	Dimensions	
	A	B		A	B
2	2.54	1.27	18	22.86	21.59
3	3.81	2.54	19	24.13	22.86
4	5.08	3.81	20	25.40	24.13
5	6.35	5.08	21	26.67	25.40
6	7.62	6.35	22	27.94	26.67
7	8.89	7.62	23	29.21	27.94
8	10.16	8.89	24	30.48	29.21
9	11.43	10.16	25	31.75	30.48
10	12.70	11.43	26	33.02	31.75
11	13.97	12.70	27	34.29	33.02
12	15.24	13.97	28	35.56	34.29
13	16.51	15.24	29	36.83	35.56
14	17.78	16.51	30	38.10	36.83
15	19.05	17.78	31	39.37	38.10
16	20.32	19.05	32	40.64	39.37
17	21.59	20.32	33	41.91	40.64

Ordering Grid



No. of Contacts
02 to 33

Contact Plating

A = Gold Flash All Over (Standard)
B = Selective Gold Flash Contact Area/
Tin On Tail
C = Tin All Over
G = 10µ" Gold Contact Area/Tin On Tail
I = 30µ" Gold Contact Area/Tin On Tail

Insulator Height 'H'

A = 1.50mm (Standard)
K = 1.00mm
B = 2.00mm

Type
1 = R1 Type
2 = R2 Type

Dimension C (Post Height) (1/100mm)

0350 = 3.50mm (Standard)
or specify custom Post Height
eg 2.50mm = 0250

Request Samples
and Quotation

Packing Options

B = Tape & Reel w/Cap (Standard)
D = Tube
E = Tube with Cap

Insulator Material

L = LCP
N = Nylon 6T

Dimension E (Footprint Width) (1/100mm)

0550 = 5.50mm (Standard)
or specify custom Footprint width
eg 0500 = 5.00mm

Dimension D (PCB to Top of Insulator) (1/100mm)

0150 = 1.50mm (Standard where 'H' = K)
0200 = 2.00mm (Standard where 'H' = A)
0240 = 2.40mm (Standard where 'H' = B)
or specify custom PCB to top of Insulator Height
eg 0250 = 2.50mm

Part Number BD021		Product Description 1.27mm Pitch Pin Header Single Row, Surface Mount, Vertical	
Drawing Date 27th March 2008			
By	CC	Tolerances (Except as Noted)	Units: Metric (mm)
Detail	BD021 D PCN	Length X.X ± 0.38 X.XX ± 0.25 X.XXX ± 0.13	Angle X° ± 5° X.X° ± 2° X.XX° ± 1° X.XXX° ± 0.5°
Revision	D2	3rd Angle Projection	
Date	07/12/16		



This drawing is confidential and copyright of Global Connector Technology, Ltd (GCT). This drawing must not be copied or disclosed without written consent. E & OE

GCT

Global Connector Technology
www.gct.co

Not to Scale | Drawn By ASE | Sheet No. 1/1