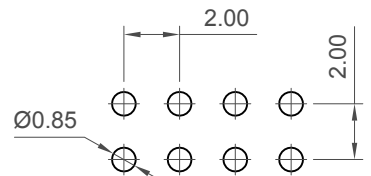
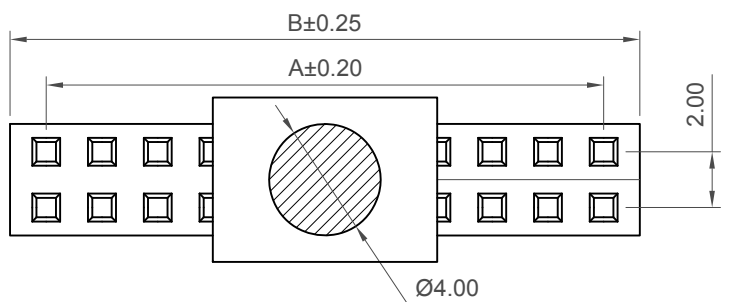
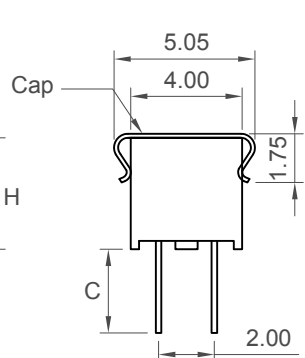
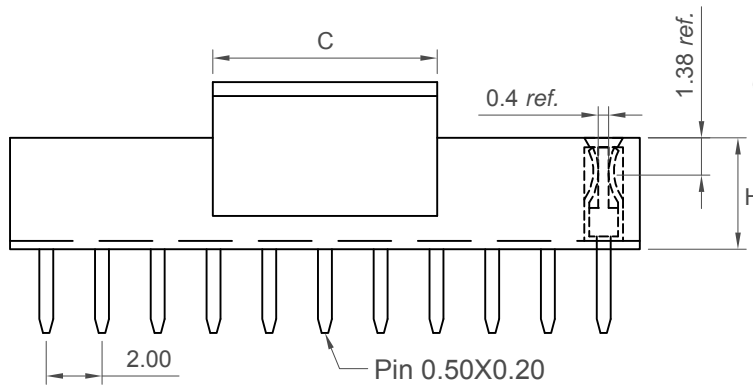
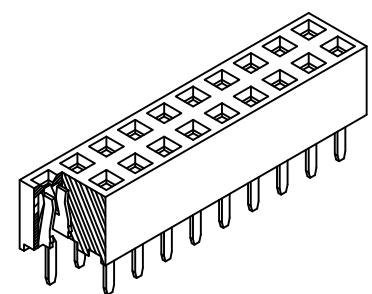


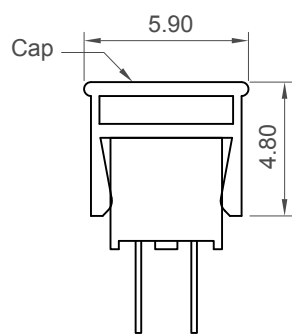
H  
G  
F  
E  
D  
C  
B  
A



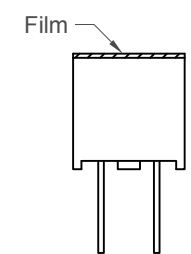
Recommended PCB Layout



Insulator Height H=4.00mm



Insulator Height H=4.30mm



Insulator Height H=4.30&4.00mm

No. of Contacts	Dimensions	
	A	B
4	2.0	4.6
6	4.0	6.6
8	6.0	8.6
10	8.0	10.6
12	10.0	12.6
14	12.0	14.6
16	14.0	16.6
18	16.0	18.6
20	18.0	20.6
22	20.0	22.6
24	22.0	24.6
26	24.0	26.6
28	26.0	28.6
30	28.0	30.6
32	30.0	32.6
34	32.0	34.6
36	34.0	36.6
38	36.0	38.6
40	38.0	40.6
42	40.0	42.6
44	42.0	44.6
46	44.0	46.6
48	46.0	48.6
50	48.0	50.6
52	50.0	52.6
54	52.0	54.6
56	54.0	56.6
58	56.0	58.6
60	58.0	60.6
62	60.0	62.6
64	62.0	64.6
66	64.0	66.6
68	66.0	68.6
70	68.0	70.6
72	70.0	72.6
74	72.0	74.6
76	74.0	76.6
78	76.0	78.6
80	78.0	80.6

Specifications 规格

Material 物料

Insulator 绝缘体物料:  
Standard 标准物料: Polyamide 聚酰胺, Nylon 6T, UL 94V-0  
Options 可选物料: Polymer 聚酯, LCP, UL 94V-0  
Contact 接触端子: Phosphor Bronze

Plating 电镀

See Ordering Grid

Electrical 电气

Current Rating 电流额定值: 2 Amp per pin  
Contact Resistance 接触电阻值: 20 mΩ max.  
Insulation Resistance 绝缘电阻值: 1000 MΩ min.  
Dielectric Withstand Voltage 耐电压: 500 V AC

Mechanical & Environmental 机械 & 环境

Operating Temperature 工作温度: -40°C to +105°C

Insulator Height H	No. of Contacts	Dimension C
4.30	04 ~ 10	4
	12 ~ 80	8.05
4.00	04 ~ 80	5

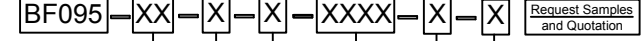
Soldering process 可焊性:

Nylon 6T (Standard 标准物料)-  
IR Reflow 回流焊: 260°C for 10 sec.  
Wave 波峰焊: 230°C for 5-10 sec.  
Manual solder 人工焊接: 350°C for 3-5 sec  
LCP (Option 可选物料)-  
IR Reflow 回流焊: 260°C for 10 sec.  
Wave 波峰焊: 250°C for 5-10 sec.  
Manual solder 人工焊接: 350°C for 3-5 sec

Mates with 配套之公头 (subject to pin length):

BF030	BF045	BF050	BF055
BF060	BF135	BF140	BF145

Ordering Grid



No. of Contacts 04 to 80  
Contact Plating  
A = Gold Flash All Over (Standard)  
B = Selective Gold Flash Contact Area/  
Tin On Tail  
C = Tin All Over  
G = 10µ" Gold Contact Area/Tin On Tail  
I = 30µ" Gold Contact Area/Tin On Tail  
Insulator (Height 'H')  
D = 4.30mm (Standard)  
C = 4.00mm  
Packing Options  
D = Tube (Standard)  
E = Tube with Cap  
F = Tube with Film  
G = Plastic Box  
Insulator Material  
N = Nylon 6T (Standard)  
L = LCP  
Dimension C (1/100mm) (Tail Length)  
'H' = 4.00mm: 0280 = 2.80mm (Standard)  
'H' = 4.30mm: 0240 = 2.40mm (Standard)  
Or specify Dimension C  
e.g. 2.50mm = 0250  
TOL +/- 0.2mm

Part Number		Product Description	
BF095		2.00mm Pitch Socket	
Drawing Date		Dual Row, Through Hole, Vertical	
31st October 2007			
By	CC	Tolerances (Except as Noted)	Units:
Detail	Drawing Release	Length X. ± 0.30 X.X ± 0.20 X.XX ± 0.15 X.XXX ± 0.10	Metric (mm)
Revision	E1	Angle X° ± 5° X.X° ± 2° X.XX° ± 1° X.XXX° ± 0.5°	
Date	18/05/17		



This drawing is confidential and copyright of Global Connector Technology, Ltd (GCT). This drawing must not be copied or disclosed without written consent. E & OE



No. to Scale	Drawn By LYH	Sheet No. 1/1