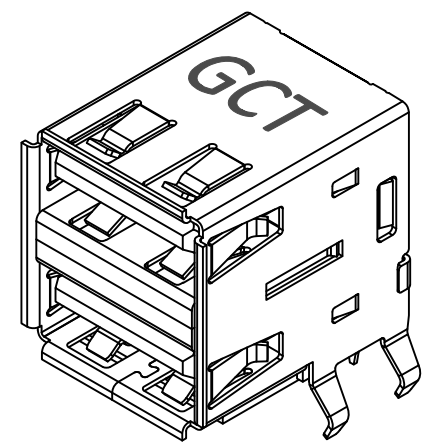
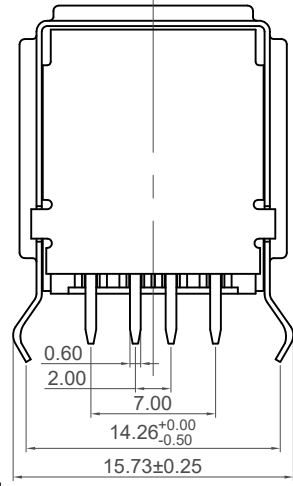
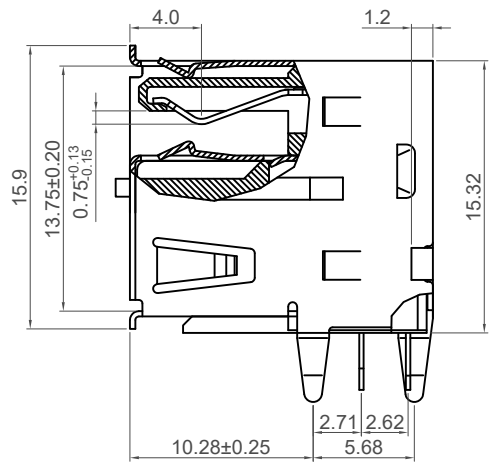


RECOMMENDED PCB LAYOUT
 Thickness: 1.2mm General Tolerance: ±0.05
 as viewed from component side
 □ Component Outline



Specifications 规格

Material 物料

Plastic Housing 塑胶外壳: PBT, G.F. Filled, UL94V-0
 Contact Terminal 接触端子: Brass
 Metallic Shell 金属外壳: SPCC

Plating 电镀

Underplating 底层电镀: 50µ" Nickel
 Contact Area 接触部分: Gold Flash or 15µ" Gold
 Solder Tails 焊接末端: 50µ" Tin
 Metallic Shell 金属外壳: Nickel

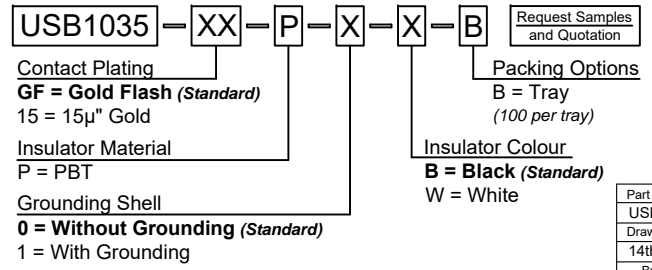
Electrical 电气

Voltage Rating 电压额定值: 30V
 Current Rating 电流额定值: 1.8A
 Contact Resistance 接触电阻值: 30 mΩ max.
 Insulating Resistance 绝缘电阻值: 1000 MΩ min.
 Dielectric Withstand Voltage 耐电压: 500V AC

Mechanical & Environmental 机械 & 环境

Operating Temperature 工作温度: -40°C to +85°C
 Mating Force 插入力: 35N (3.57Kg) max.
 Unmating Force 拔出力: 10N (1.02Kg) min.
 Durability 耐久性: 1,500 Cycles

Ordering Grid



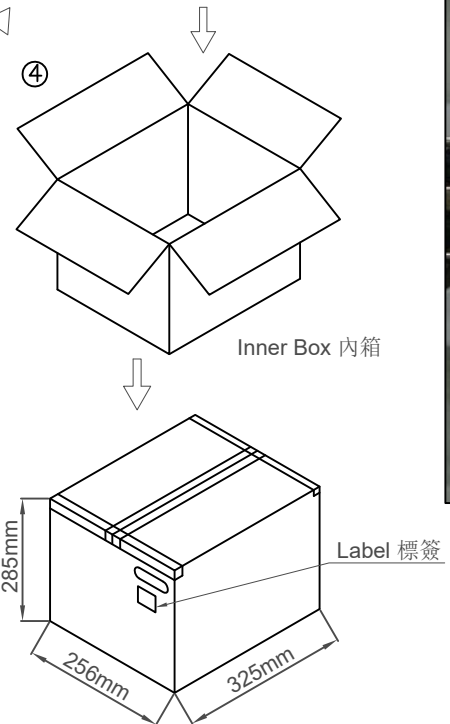
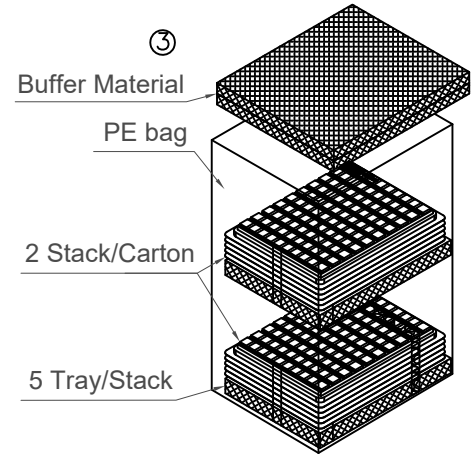
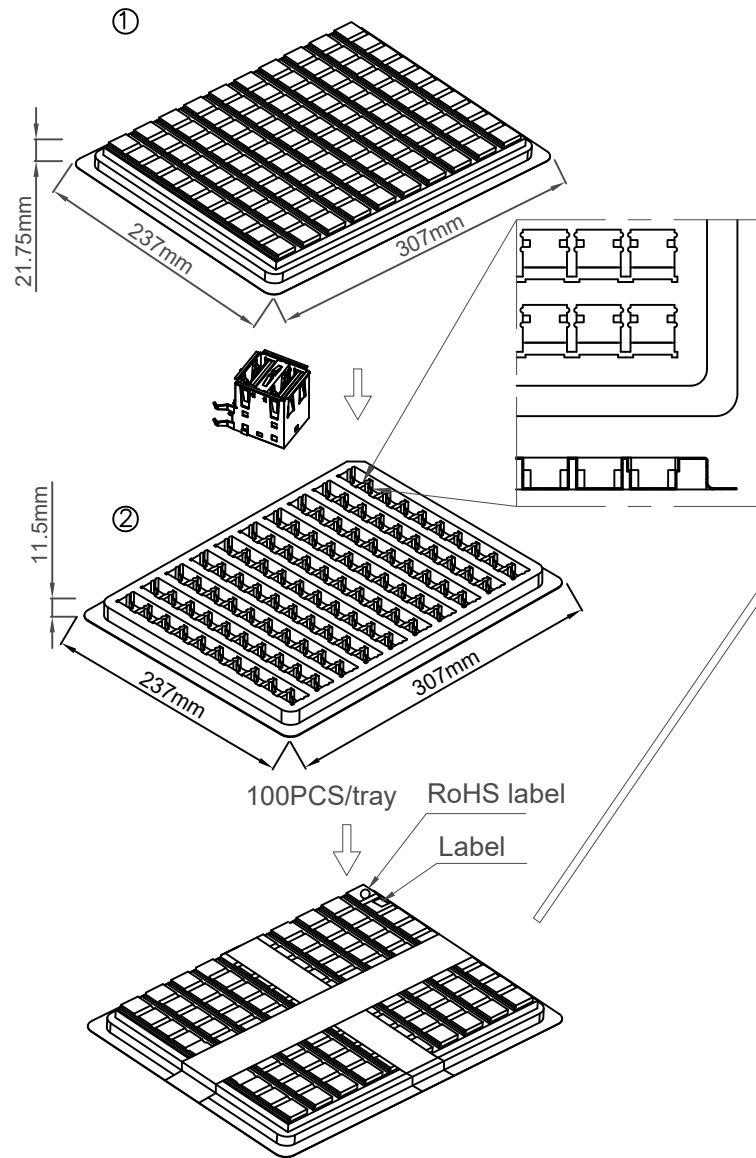
Part Number		Product Description	
USB1035		USB Dual Receptacle, Type A, 8 Pin, Through Hole, Horizontal, Top Mount, With Kinked Shell Stakes	
Drawing Date		14th February 2011	
By	AJO	Tolerances (Except as Noted)	Units:
Detail	USB1035	Length	Metric (mm)
Revision	E	X.X ± 0.35	X." ± 3"
Date	04/02/15	X.XX ± 0.25	X.X" ± 1.5"
		3rd Angle Projection	



This drawing is confidential and copyright of Global Connector Technology, Ltd (GCT). This drawing must not be copied or disclosed without written consent. E & OE



Not to Scale	Drawn By SA	Sheet No. 1/2
--------------	-------------	---------------



Products P/N	PCS/Tray	Trays/Carton	PCS/Carton
USB1035	100	10	1000

Packing Rules 封裝規則?

- 1.USB's placed into the tray base. 将USB连接器放入吸塑盘内
- 2.Tray cover and base taped together to keep USB's in place. USB连接器放好后, 加上吸塑盖, 并用胶带缠绕好
- 3.10 trays put into carton. 10吸塑盘一叠, 放入纸箱
- 4.Boxed taped and label stuck on the outer carton. 用胶带封住纸箱; 并贴上标签。



USB's placed into the tray base. 将USB连接器放入吸塑盘内

Part Number		Product Description	
USB1035		USB Dual Receptacle, Type A, 8 Pin, Through Hole, Horizontal, Top Mount, With Kinked Shell Stakes	
Drawing Date		14th February 2011	
By	AJO	Tolerances (Except as Noted)	Units:
Detail	USB1035 E PCN	Length	Metric (mm)
Revision	E	Angle	3rd Angle Projection
Date	04/02/15		

RoHS COMPLIANT 2011/85/EU Deca-BDE

This drawing is confidential and copyright of Global Connector Technology, Ltd (GCT). This drawing must not be copied or disclosed without written consent. E & OE

Not to Scale	Drawn By SA	Sheet No. 2/2
--------------	-------------	---------------

