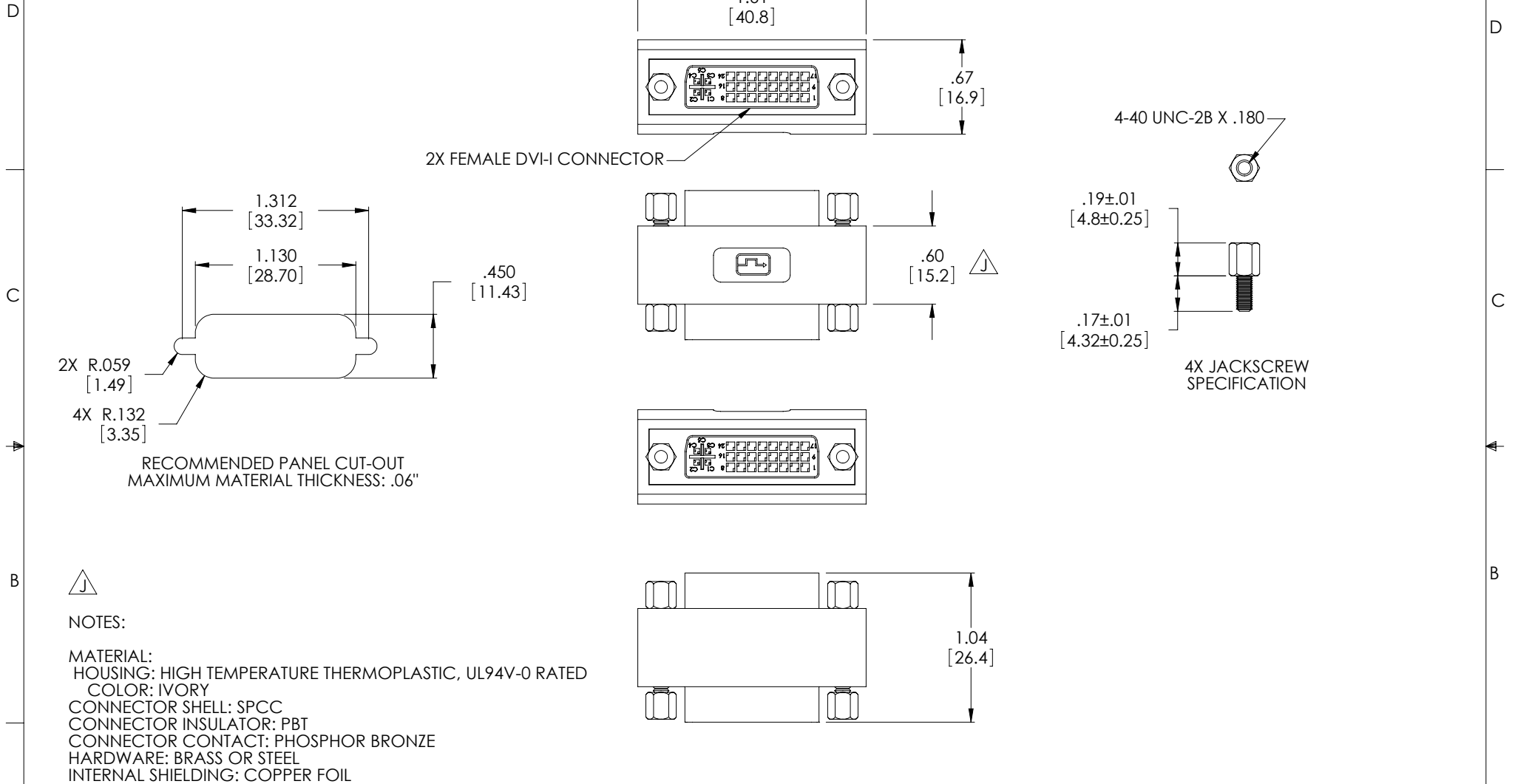


THE INFORMATION CONTAINED IN THIS DRAWING IS THE SOLE PROPERTY OF L-COM, INC. ANY REPRODUCTION IN PART OR WHOLE WITHOUT THE WRITTEN PERMISSION OF L-COM, INC. IS PROHIBITED.

REVISIONS			
REV	DESCRIPTION	DATE	APPROVED
F	ECN16641: ADDED COMPONENT SPECIFICATION TABLE	1/16/04	DFP
G	ECN2010: HOUSING MAT'L WAS PVC. ADDED UL94V-0 RATED	3/18/05	DFP
H	ECN#2101: EDITED PANEL CUT-OUT DIMENSIONS	06/08/05	M.LAHEY
J	ECN5398: .60 WAS .55. UPDATED FORMAT AND NOTES. ADDED DUAL DIMS.	03/22/11	DFP



NOTES:

MATERIAL:
 HOUSING: HIGH TEMPERATURE THERMOPLASTIC, UL94V-0 RATED
 COLOR: IVORY
 CONNECTOR SHELL: SPCC
 CONNECTOR INSULATOR: PBT
 CONNECTOR CONTACT: PHOSPHOR BRONZE
 HARDWARE: BRASS OR STEEL
 INTERNAL SHIELDING: COPPER FOIL

FINISH:
 CONNECTOR SHELL: TIN OVER NICKEL PLATE.
 CONTACTS: 30 MICROINCH OF GOLD OVER 100 MICROINCH OF NICKEL PLATE.

MISCELLANEOUS:
 WIRING IS STRAIGHT THRU, FROM PIN TO LIKE NUMBERED PIN.
 COMPONENT SHALL BE TESTED FOR CONTINUITY.
 COMPONENT SHALL BE INDIVIDUALLY PACKAGED IN ACCORDANCE WITH L-COM SPECIFICATION PS-0031.

UNLESS OTHERWISE SPECIFIED, DIMENSIONS ARE IN INCHES [mm] OVERALL CABLE LENGTH TOLERANCE: ≤12 [305] = +1 [25] / -0 >12 [305] ≤60 [1524] = +2 [51] / -0 >60 [1524] ≤120 [3048] = +4 [102] / -0 >120 [3048] ≤300 [7620] = +6 [152] / -0 >300 [7620] = +3% / -0%	APPROVALS	DATE		45 BEECHWOOD DRIVE NORTH ANDOVER, MA 01845
	DRAWN BY D. PARHAM	12/26/2002		CATEGORY
ALL OTHER DIMENSIONAL TOLERANCES: .X = ±.2 .XX = ±.02 .XXX = ±.005	CHECKED BY T. CLARK	01/03/2003	PRODUCT DESCRIPTION	
PROJECTION	APPROVED BY R. CARRICK	01/10/2003	BULKHEAD ADAPTOR DVI F/F	
	CONFIGURATION DETAILS OF UNDIMENSIONED FEATURES MAY VARY	COLOR VARIATIONS MAY OCCUR	SIZE A	FSCM NO. 43321
			DWG. NO. DMB605FF	REV. J
			SCALE: NONE	CAD FILE: DMB605FF.SLDDRW
				SHEET 1 OF 1