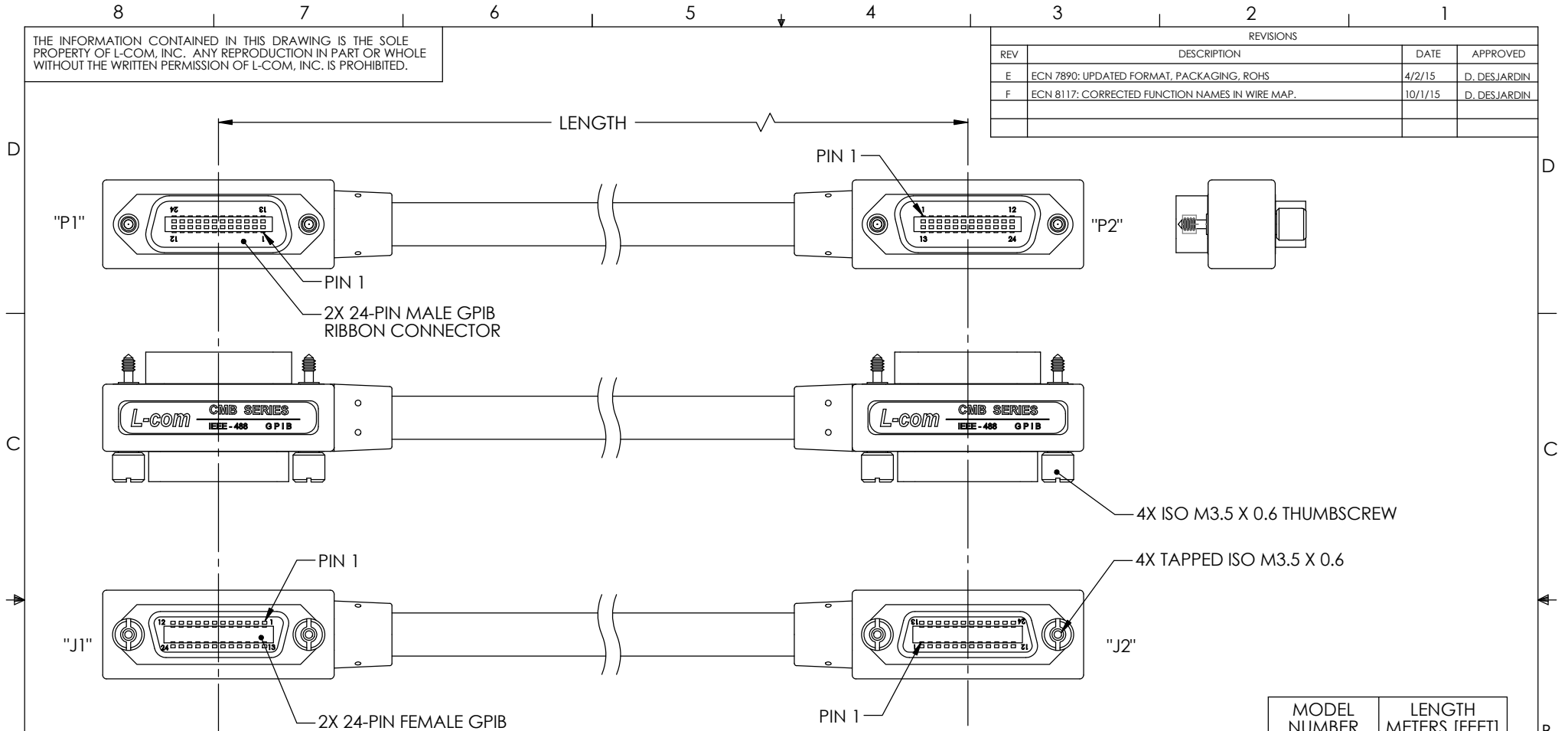


THE INFORMATION CONTAINED IN THIS DRAWING IS THE SOLE PROPERTY OF L-COM, INC. ANY REPRODUCTION IN PART OR WHOLE WITHOUT THE WRITTEN PERMISSION OF L-COM, INC. IS PROHIBITED.

REVISIONS			
REV	DESCRIPTION	DATE	APPROVED
E	ECN 7890: UPDATED FORMAT, PACKAGING, ROHS	4/2/15	D_DESJARDIN
F	ECN 8117: CORRECTED FUNCTION NAMES IN WIRE MAP.	10/1/15	D_DESJARDIN



**NOTES:**  
MEETS REQUIREMENTS OF ANSI/IEEE STD 488.1-1987.

**MATERIALS:**  
CABLE: U.L. STYLE 2464, TWELVE TWISTED PAIRS 26AWG STRANDED COPPER, OVERALL DOUBLE SHIELD ALUMINIZED POLYESTER FOIL PLUS BRAIDED TINNED COPPER WITH DRAIN WIRE, BEIGE PVC JACKET.

MOLDINGS: POLYVINYLCHLORIDE, BEIGE  
CONNECTOR INSULATORS: GLASS-FILLED PBT (BLUE), UL94V-0  
CONNECTOR CONTACTS: COPPER ALLOY, 30 MICROINCHES GOLD OVER NICKEL  
CONNECTOR SHELL: STAMPED STEEL OR DIE-CAST ALLOY, NICKEL PLATED  
THUMBSCREWS: ISO M3.5 X 0.6, STEEL, BLACK OXIDE FINISH

**ENVIRONMENTAL:**  
OPERATING TEMPERATURE RANGE: -20°C TO + 80°C

**MISCELLANEOUS:**  
SEE SHEET 2 FOR WIRE MAP  
CABLE ASSEMBLY SHALL BE TESTED FOR CONTINUITY.  
CABLE ASSEMBLY SHALL BE INDIVIDUALLY PACKAGED IN ACCORDANCE WITH L-COM SPECIFICATION PS-0031.

**REGULATORY COMPLIANCE:**  
CE2011/65/EU(RoHS DIRECTIVE)

MODEL NUMBER	LENGTH METERS [FEET]
CMB24-05M	0.50 [1.64]
CMB24-1M	1.0 [3.28]
CMB24-2M	2.0 [6.56]
CMB24-3M	3.0 [9.84]
CMB24-4M	4.0 [13.12]
CMB24-5M	5.0 [16.40]
CMB24-6M	6.0 [19.68]
CMB24-8M	8.0 [26.24]

UNLESS OTHERWISE SPECIFIED, DIMENSIONS ARE IN INCHES [mm] OVERALL CABLE LENGTH TOLERANCE: ≤12 [305] = +1 [25] / -0 >12 [305] ≤60 [1524] = +2 [51] / -0 >60 [1524] ≤120 [3048] = +4 [102] / -0 >120 [3048] ≤300 [7620] = +6 [152] / -0 >300 [7620] = +5% / -0% ALL OTHER DIMENSIONAL TOLERANCES: .X = ± .2 [5.08] .XX = ± .02 [1.51] .XXX = ±.005 [1.13]	APPROVALS	DATE			45 BEECHWOOD DRIVE NORTH ANDOVER, MA 01845
	DRAWN BY T CLARK	8/23/2001			CATEGORY
	CHECKED BY D PARHAM	9/5/2001	PRODUCT DESCRIPTION		IEEE-488
	APPROVED BY R CARRICK	9/10/2001	CABLE, MOLD GPIB NORM		
PROJECTION 	COLOR VARIATIONS MAY OCCUR	SIZE <b>A</b>	FSCM NO. <b>43321</b>	DWG. NO. <b>CMB24</b>	REV. <b>F</b>
REF	SCALE: NONE	CAD FILE: CMB24.SLDDRW	SHEET 1 OF 2		

THE INFORMATION CONTAINED IN THIS DRAWING IS THE SOLE PROPERTY OF L-COM, INC.. ANY REPRODUCTION IN PART OR WHOLE WITHOUT THE WRITTEN PERMISSION OF L-COM, INC. IS PROHIBITED.



WIRING MAP			
PAIR NUMBER	J1/P1	J2/P2	FUNCTION
1	1	1	DATA LINE DI01
	14	14	DATA LINE DI06
2	2	2	DATA LINE DI02
	3	3	DATA LINE DI03
3	4	4	DATA LINE DI04
	13	13	DATA LINE DI05
4	15	15	DATA LINE DI07
	16	16	DATA LINE DI08
5	5	5	EOI
	24	24	EOI RETURN
6	6	6	DAV
	18	18	DAV RETURN
7	7	7	NRFD
	19	19	NRDF RETURN
8	8	8	NDAC
	20	20	NDAC RETURN
9	9	9	IFC
	21	21	IFC RETURN
10	10	10	SRQ
	22	22	SRQ RETURN
11	11	11	ATN
	23	23	ATN RETURN
12	17	17	REN
	24	24	REN RETURN
DRAIN WIRE	12 & SHELL	12 & SHELL	SHIELD

		45 BEECHWOOD DRIVE NORTH ANDOVER, MA 01845	
CATEGORY			
IEEE-488			
PRODUCT DESCRIPTION			
CABLE, MOLD GPIB NORM			
SIZE	FSCM NO.	DWG. NO.	REV.
<b>A</b>	<b>43321</b>	<b>CMB24</b>	<b>F</b>
SCALE: NONE		CAD FILE: CMB24.SLDDRW	
			SHEET 2 OF 2