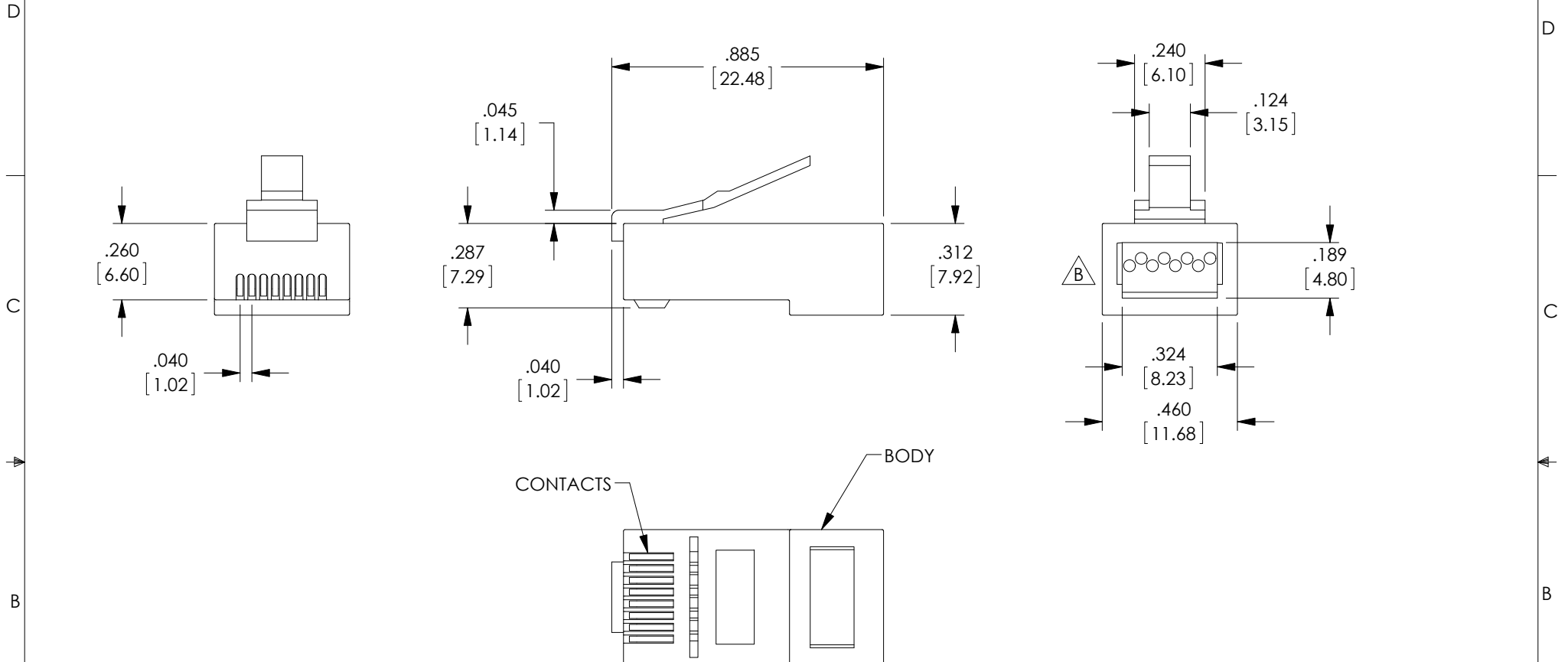


THE INFORMATION CONTAINED IN THIS DRAWING IS THE SOLE PROPERTY OF L-COM, INC. ANY REPRODUCTION IN PART OR WHOLE WITHOUT THE WRITTEN PERMISSION OF L-COM, INC. IS PROHIBITED.

REVISIONS			
REV	DESCRIPTION	DATE	APPROVED
A	INITIAL RELEASE	8/16/12	D.GRIFFIN
B	ECN 7119: STAGGERED HOLE PATTERN, REVISED ROHS AND FORMAT	10/23/13	D.FRISIELLO



**NOTES:**

PLUG KIT CONSISTS OF: PRE-INSERTED PLUG BODY, (UNIBODY).

**MATERIALS:**  
 FRONT HOUSING PLASTIC: CLEAR POLYCARBONATE, UL94-V0  
 CONTACTS: PHOSPHOR BRONZE, 50μ GOLD PLATING.

CONTACTS TERMINATE SOLID OR STRANDED CONDUCTORS BETWEEN .037 [0.94mm] TO .042 [1.07mm] OUTSIDE DIAMETER OF INSULATION.

ALL DIMENSIONS ARE FOR REFERENCE ONLY.

COMPONENT SHALL BE PACKAGED IN QUANTITY OF 50, IN ACCORDANCE WITH L-COM SPECIFICATION PS-0031.

**REGULATORY COMPLIANCE:**  
 CE2011/65/EU (RoHS DIRECTIVE)



UNLESS OTHERWISE SPECIFIED, DIMENSIONS ARE IN INCHES [mm] OVERALL CABLE LENGTH TOLERANCE: ≤12 [305] = +1 [25] / -0 >12 [305] ≤60 [1524] = +2 [51] / -0 >60 [1524] ≤120 [3048] = +4 [102] / -0 >120 [3048] ≤300 [7620] = +6 [152] / -0 >300 [7620] = +5% / -0% ALL OTHER DIMENSIONAL TOLERANCES: .X = ±.2 [5.08] .XX = ±.02 [51] .XXX = ±.005 [1.27]	APPROVALS	DATE	45 BEECHWOOD DRIVE NORTH ANDOVER, MA 01845
	DRAWN BY D.FRISIELLO	8/16/12	
PROJECTION 	CONFIGURATION DETAILS OF UNDIMENSIONED FEATURES MAY VARY	PRODUCT DESCRIPTION PLUG RJ45(8X8) CAT5E UNSHLD 50PK	
COLOR VARIATIONS MAY OCCUR	SIZE <b>A</b>	FSCM NO. <b>43321</b>	DWG. NO. TSP4088C5
SCALE: NONE		CAD FILE: TSP4088C5.SLDDRW	REV. <b>B</b>
SHEET 1 OF 1			