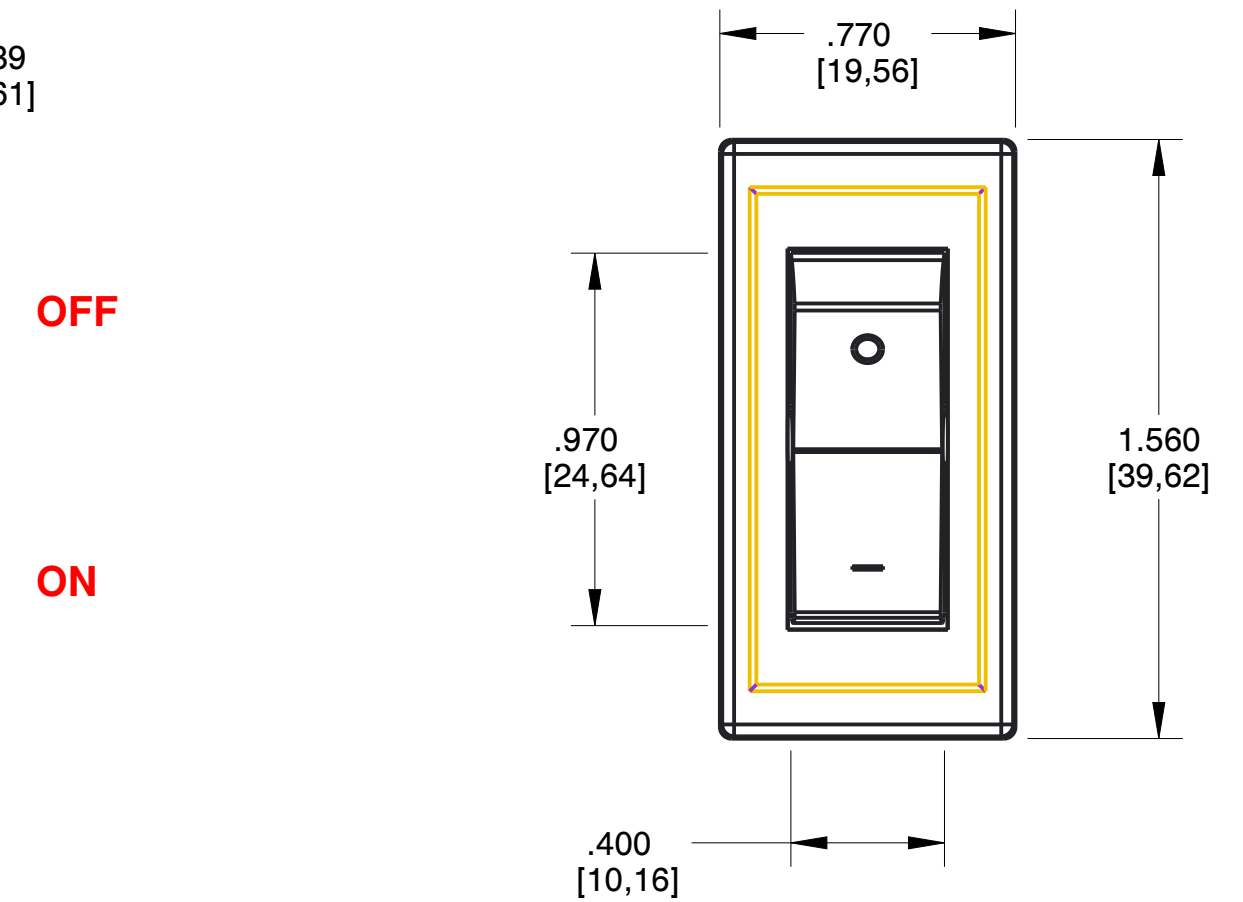
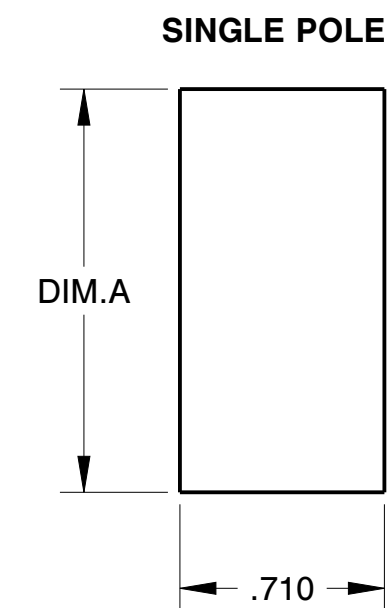
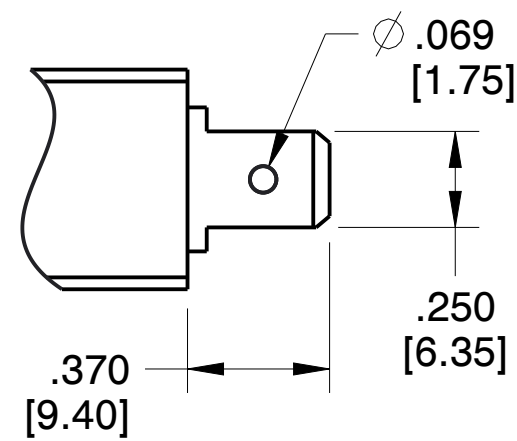


**TERMINAL DIMENSIONAL DETAIL**



**PANEL CUT-OUT DETAIL (ROCKER)**



| PANEL THICKNESS | DIM.A                                                          |
|-----------------|----------------------------------------------------------------|
| .062[1.57]      | 1.385[35.18]                                                   |
| .093[2.36]      | 1.420[36.07]<br><small>+ .005/ + .13<br/>- .001/ - .00</small> |
| .125[3.18]      | 1.460[37.08]                                                   |

**PROPRIETARY NOTICE**  
 NOTICE TO ALL PERSONS RECEIVING THIS DRAWING: THIS DOCUMENT IS THE PROPERTY OF CARLING TECHNOLOGIES, INC. AND IS NOT TO BE DISCLOSED, REPRODUCED IN WHOLE OR IN PART OR USED FOR MANUFACTURING PURPOSES BY ANYONE WITHOUT THE CONSENT OF CARLING TECHNOLOGIES, INC.

**DISCLAIMER**  
 MANUFACTURER RESERVES THE RIGHT TO CHANGE PRODUCT SPECIFICATIONS WITHOUT PRIOR NOTICE.

60 JOHNSON AVE  
 PLAINVILLE, CT 06062, USA  
 PHONE: (860) 793-9281  
 SALES: SALES@CARLINGTECH.COM  
 APPLICATION SUPPORT: TEAM2@CARLINGTECH.COM

**M-SERIES  
 CIRCUIT BREAKER**

DO NOT SCALE DRAWING  
 UNLESS OTHERWISE SPECIFIED  
 DIMENSIONS: IN [MM]  
 TOLERANCES: ± .020 [0.51]

|                        |      |
|------------------------|------|
| DRAWING FILE NO.       | SIZE |
| MA1-B-34-610-1-A12-B-C | C    |

PRODUCT SERIES: M-SERIES C.B. | SHEET 1 OF 1