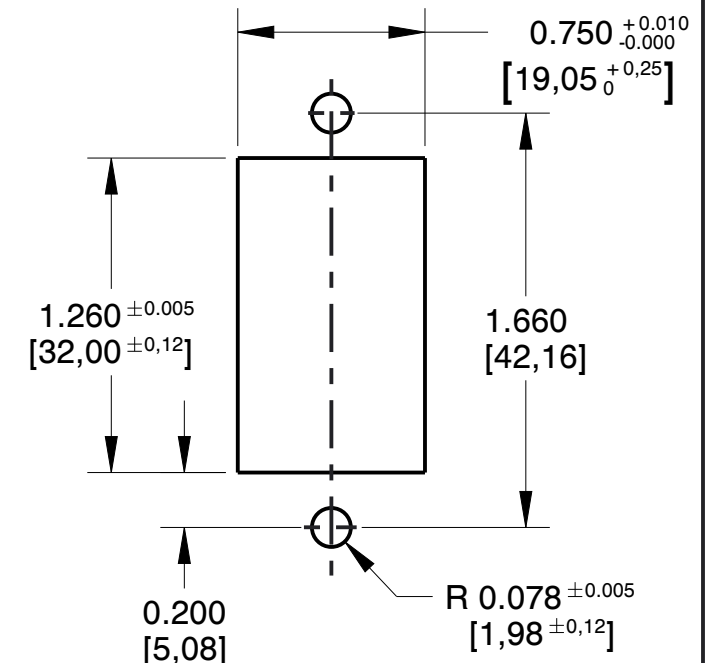
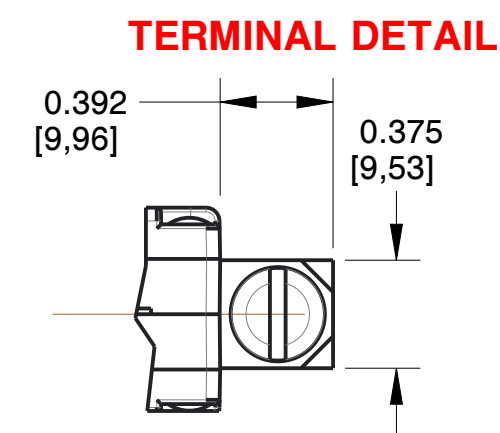
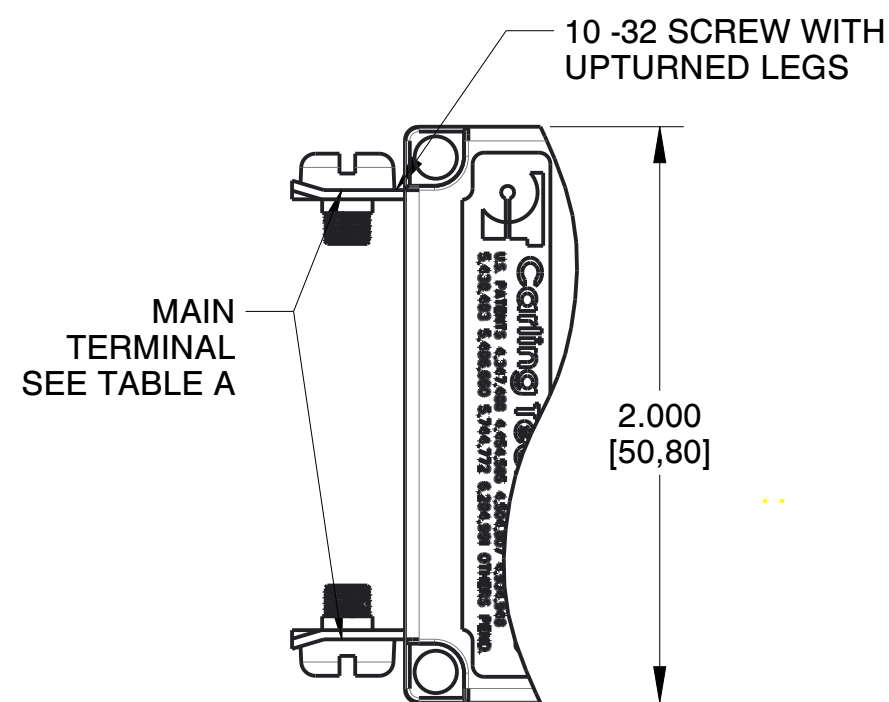
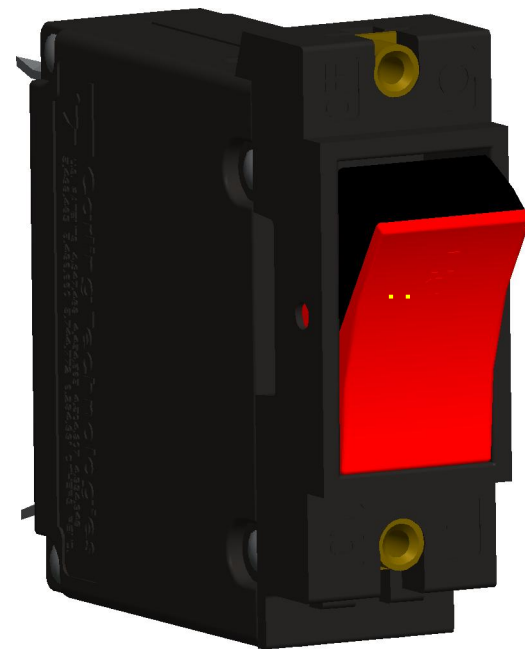
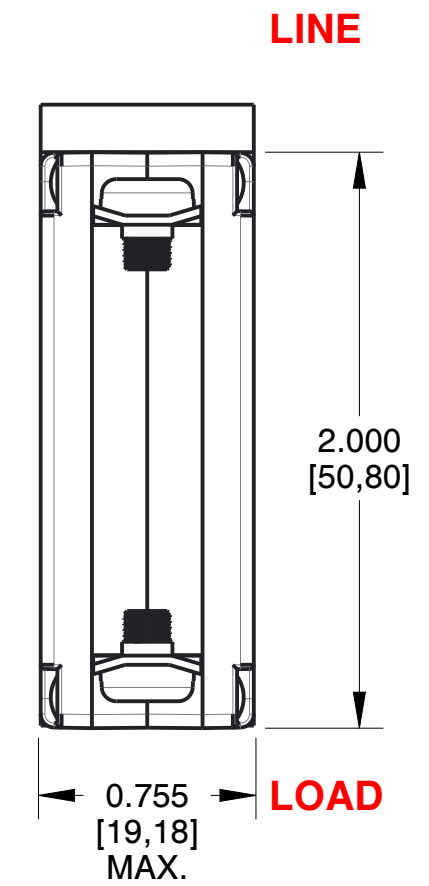
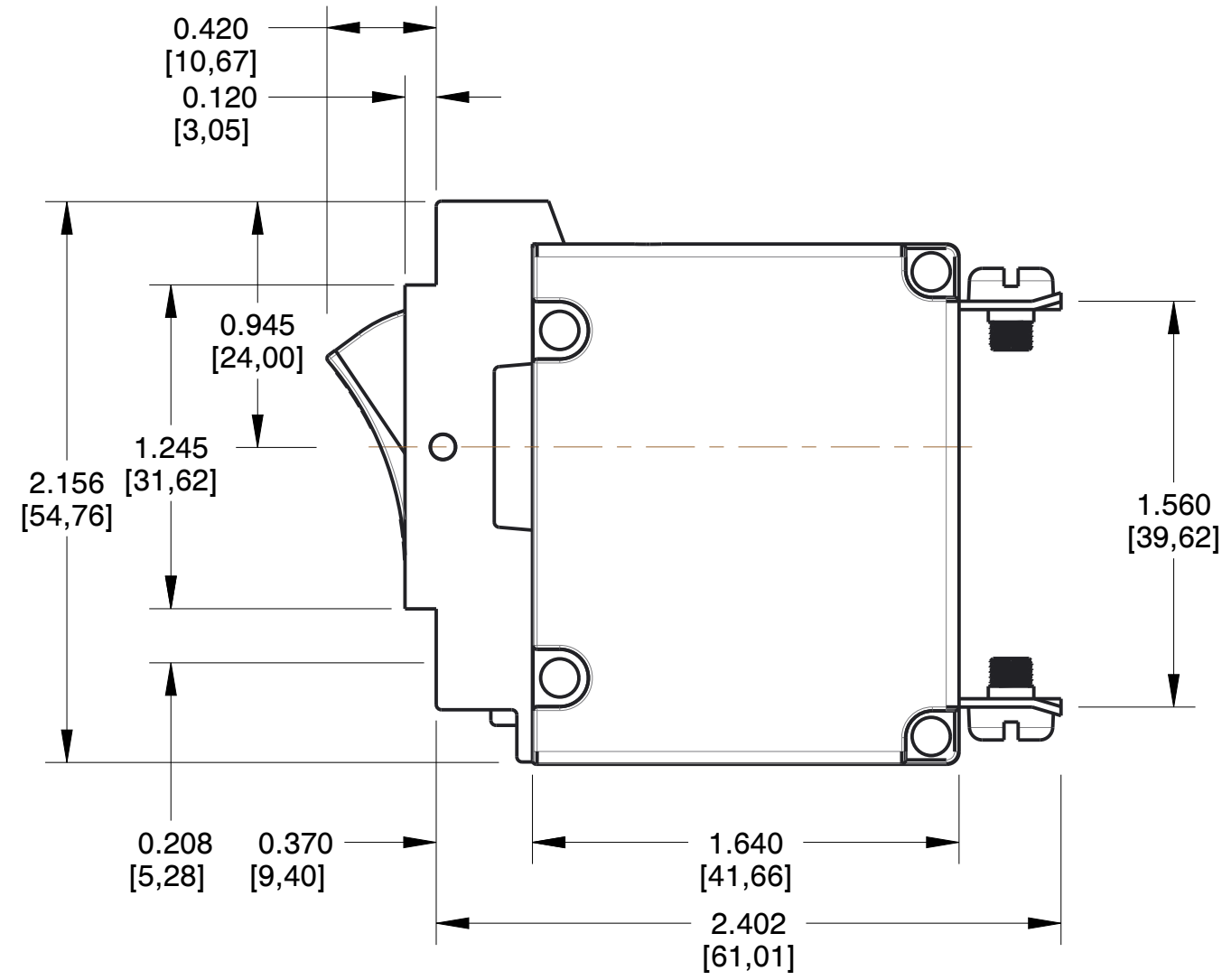
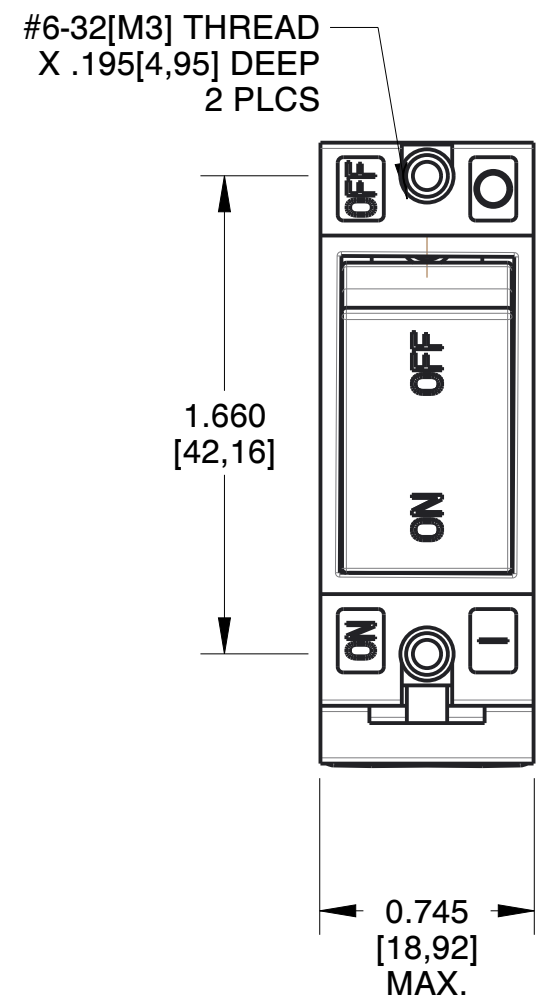


DRAWING FILE NO. AD1-B0-34-615-4G1-C		REV 08-08-17
REVISIONS		
DATE	DESCRIPTION	
08-08-17	DRAWING CREATED	



Carling Technologies
Innovative Designs. Powerful Solutions.

60 JOHNSON AVE
PLAINVILLE, CT 06062, USA
PHONE: (860) 793-9281
SALES: SALES@CARLINGTECH.COM
APPLICATION SUPPORT: TEAM2@CARLINGTECH.COM

CIRCUIT SCHEMATIC		TABLE A TIGHTENING TORQUE SPECIFICATIONS	
ANSI		THREAD SIZE	TORQUE
SERIES TRIP		#6-32 & M3 MOUNTING HARDWARE	7-9- IN-LBS [0.8-1.0 NM]
		#8-32 & M4 THREAD TERMINAL SCREW	12-15 IN-LBS [1.4-1.7 NM]
		#10-32 & M5 THREAD TERMINAL SCREW	15-20 IN-LBS [1.7-2.3 NM]

PROPRIETARY NOTICE
NOTICE TO ALL PERSONS RECEIVING THIS
DRAWING: THIS DOCUMENT IS THE PROPERTY OF
CARLING TECHNOLOGIES, INC. AND IS NOT TO BE
DISCLOSED, REPRODUCED IN WHOLE OR IN
PART OR USED FOR MANUFACTURING PURPOSES
BY ANYONE WITHOUT THE CONSENT OF
CARLING TECHNOLOGIES, INC.

DISCLAIMER
MANUFACTURER RESERVES THE RIGHT TO CHANGE
PRODUCT SPECIFICATIONS WITHOUT PRIOR NOTICE.

**A-SERIES
CIRCUIT_BREAKER**

DO NOT SCALE DRAWING
UNLESS OTHERWISE SPECIFIED
DIMENSIONS: IN [MM]
TOLERANCES: ± .020 [0.51]

DRAWING FILE NO. AD1-B0-34-615-4G1-C SIZE C
PRODUCT SERIES: A-SERIES C.B. SHEET 1 OF 1