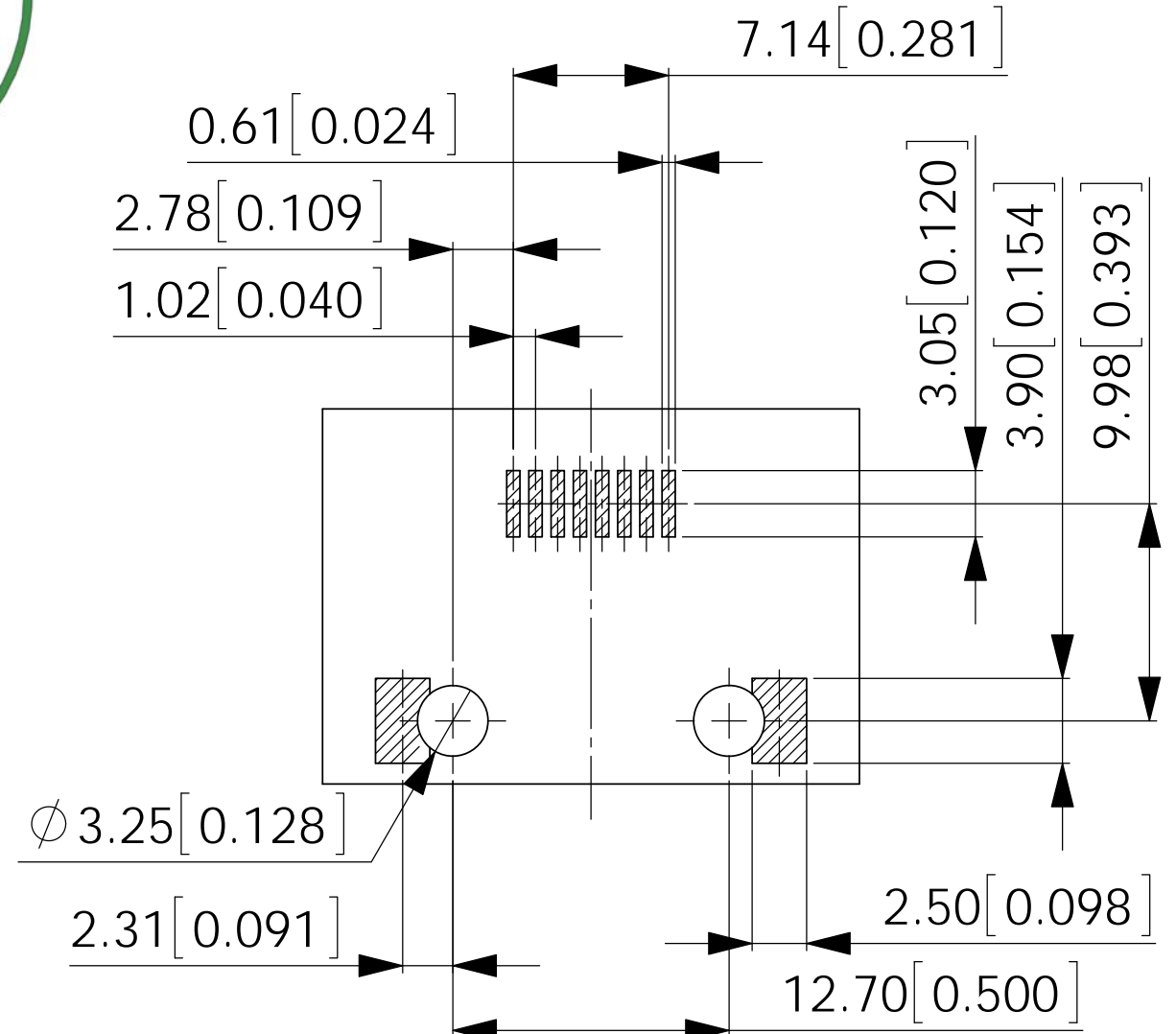
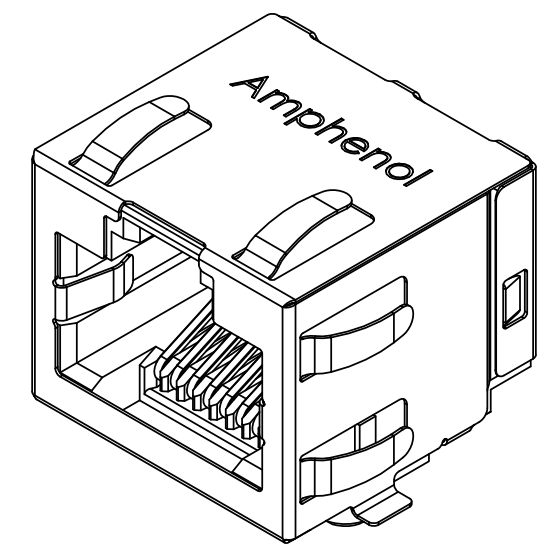
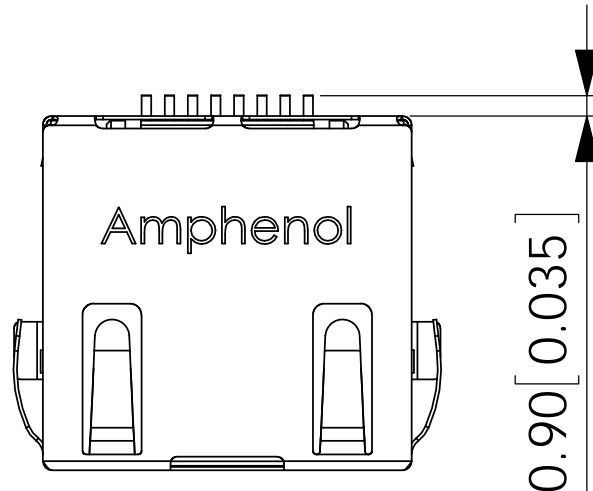
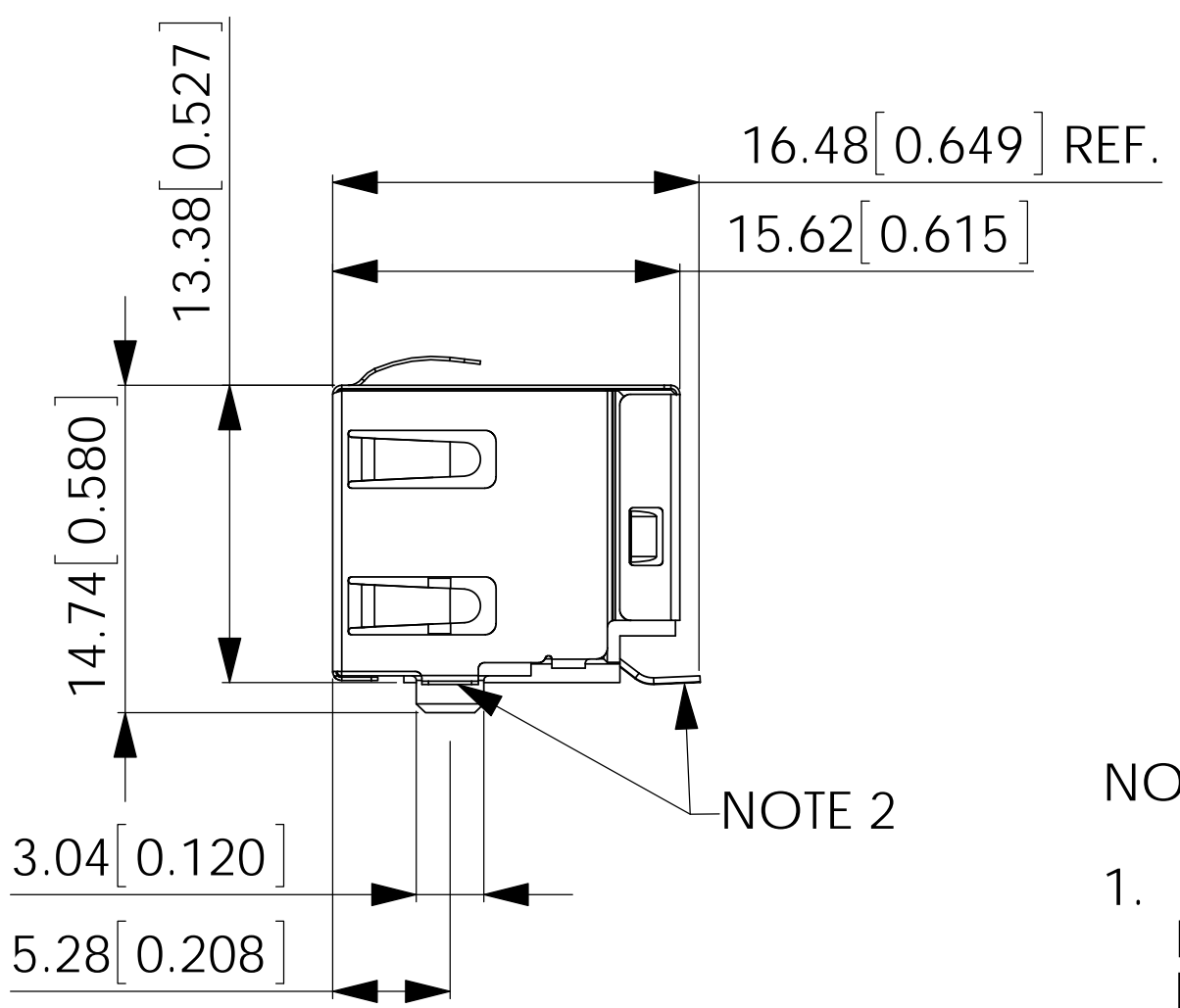
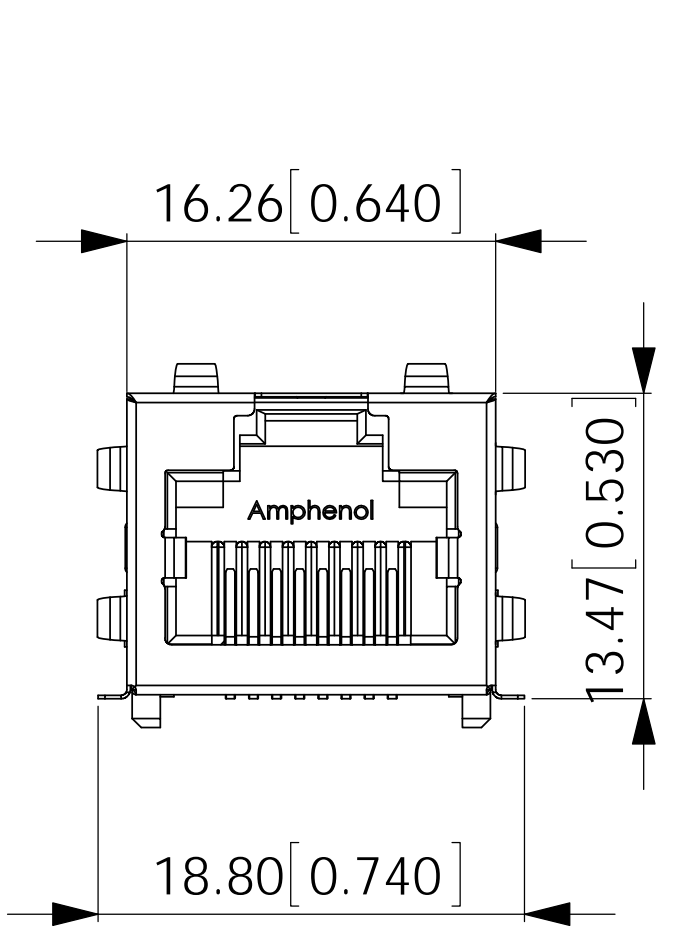


REVISIONS			
REV	DESCRIPTION, ECN, EAR NO.	DATE	APP'D
A	PROPOSAL DRAWING	AUG22/12	A.G
B	REVISED PROPOSAL DRAWING	JUN26/15	L.CHAN



RECOMMENDED P.C.B LAYOUT
COMPONENT SIDE OF BOARD
TOLERANCE: +/-0.05[.002]

LOCATE FEATURES
 0.13[.005]
 POSITION DIMENSIONS ARE BASIC



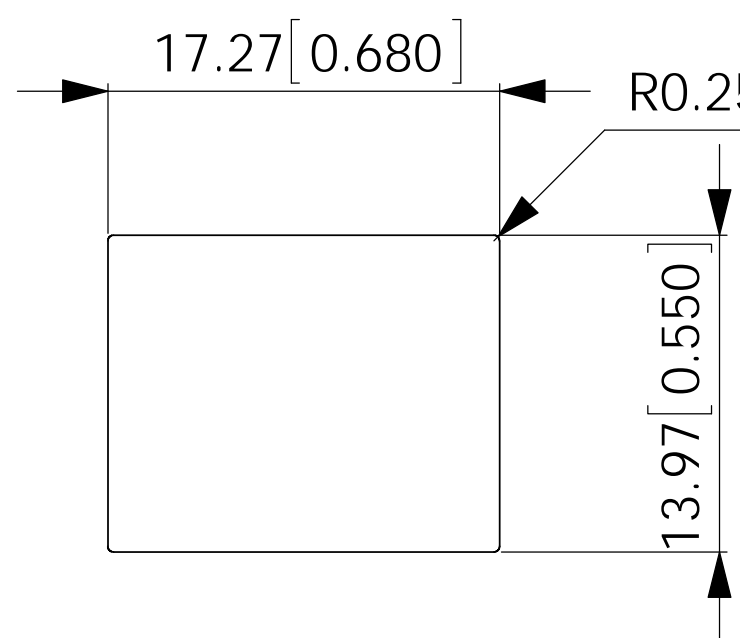
NOTE 2

NOTES

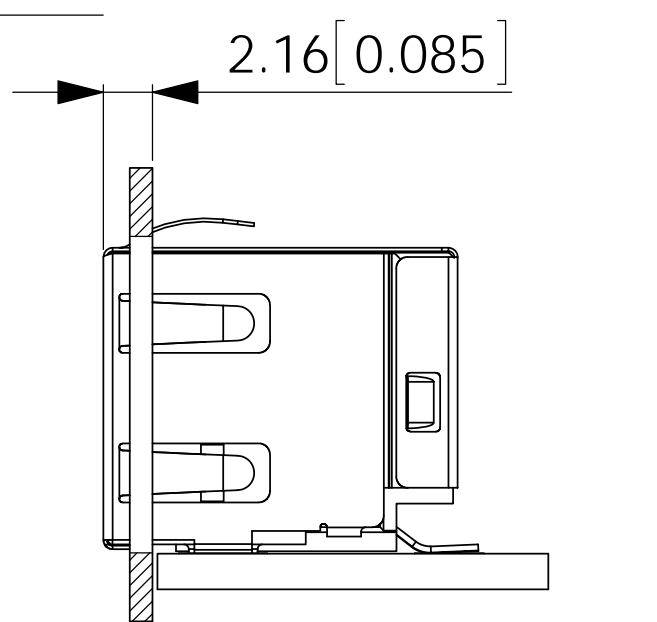
- MATERIALS:
HOUSING: HIGH TEMPERATURE THERMOPLASTIC
FLAMMABILITY RATING UL 94V-0, COLOR: BLACK

CONTACTS: PHOSPHOR BRONZE
WITH 50u" [1.27 MICRONS] MIN. GOLD PLATING
ON MATING SURFACE, WITH 100u" [2.54 MICRONS] MIN.
MATTE TIN ON CONTACT TAILS, 50u" [1.27 MICRONS] MIN.
NICKEL UNDERPLATE

SHIELD: STAINLESS STEEL WITH 100u" [2.54 MICRONS] MATTE
TIN OVER 20u" [0.508 MICRONS] MIN. NICKEL UNDERPLATE.
 - COPLANARITY SPECIFICATION:
THE MAXIMUM GAP BETWEEN ALL TERMINAL TAILS IS 0.10 [0.004]
- AMPHENOL PART NUMBER IS RJCSE-5380-01



FRONT VIEW
RECOMMEND PANEL LAYOUT



SIDE VIEW SHOWING
WITH PANEL AND PCB

UNLESS SPECIFIED OTHERWISE	DRAWN	B.COPPING	NOV22/12
PRIMARY UNITS	MILLIMETERS	CHECKED	
SECONDARY	INCHES	M. E. APP'D	
REFERENCE IN PARENTHESES		Q. A. APP'D	
GENERAL TOLERANCES FOR MM	DWG APPR.	A.Green	NOV22/12
1 DECIMAL PLACE	±0.38	ENG. REL. NO.	
2 DECIMAL PLACES	±0.25	REF.	
3 DECIMAL PLACES	±0.13		
ANGULAR DEGREES	±1°		

Amphenol Canada Corp.
www.amphenolcanada.com

**SINGLE PORT MODULAR JACK,
8 POSITION, 8 CONTACTS, SHIELDED,
SURFACE MOUNT-RoHS COMPLIANT**

DWG. NO. **P-RJCSE-5380-01** REV **B**

CODE ID NO. 03554 DWG SIZE: C SCALE: 3:1 SHEET 1 OF 1