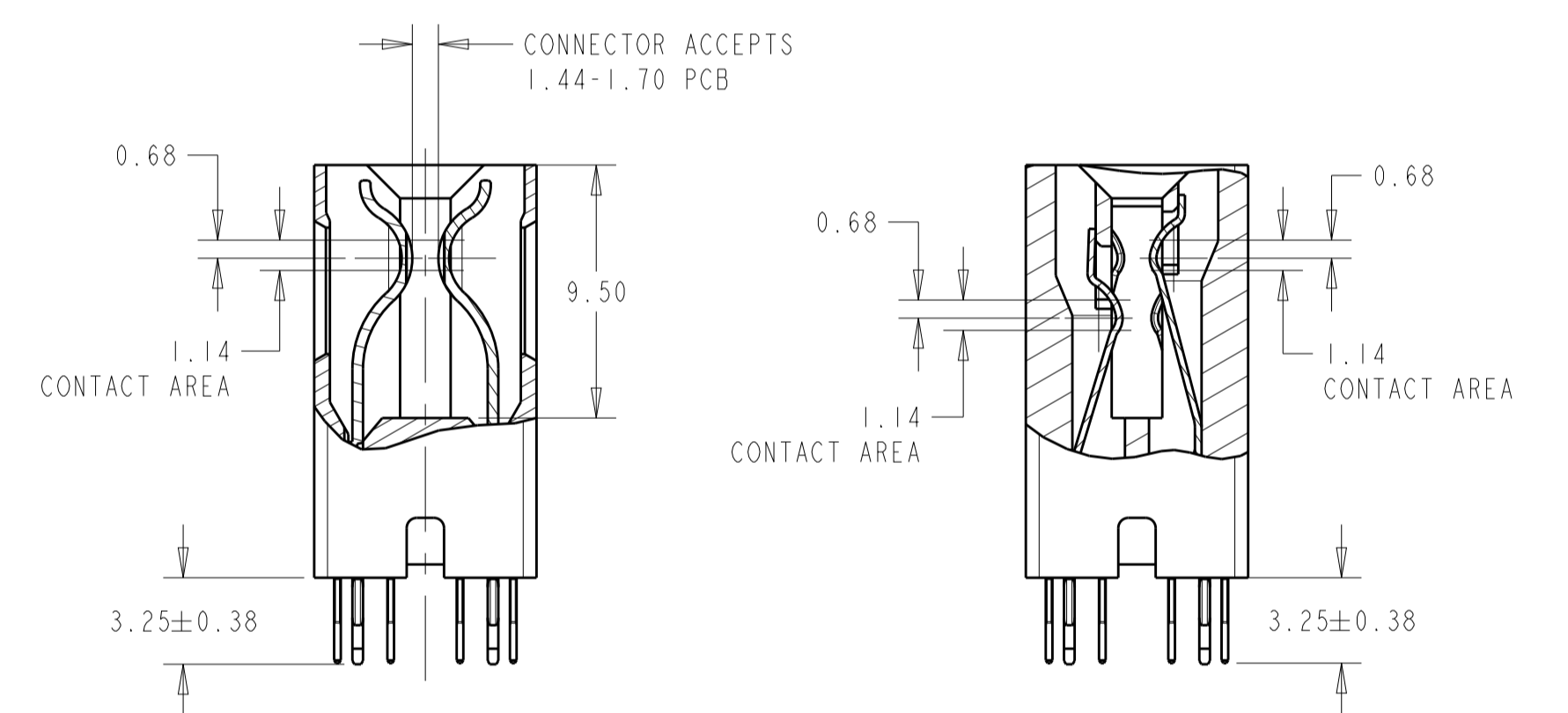
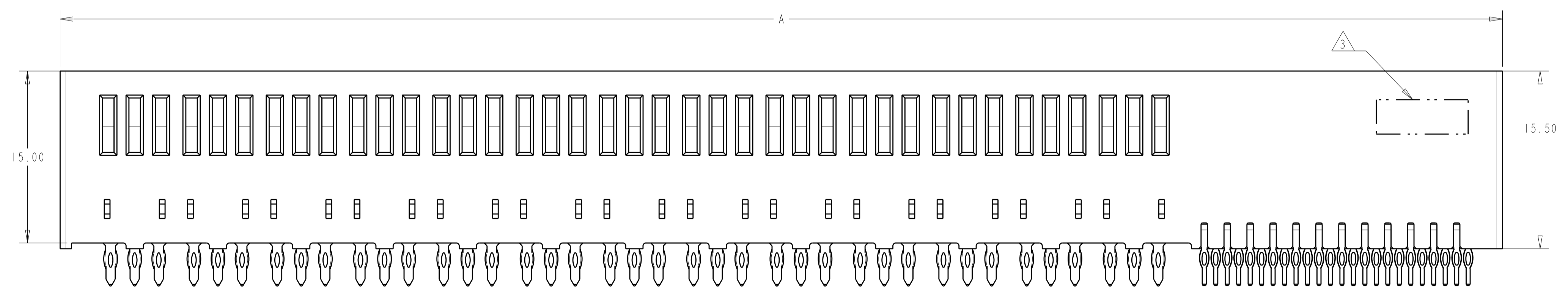
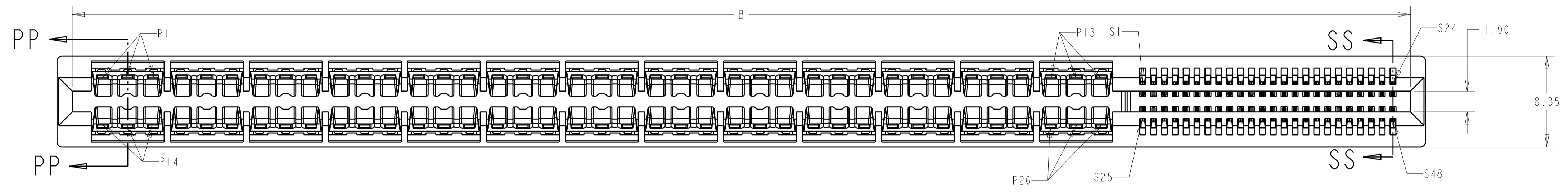
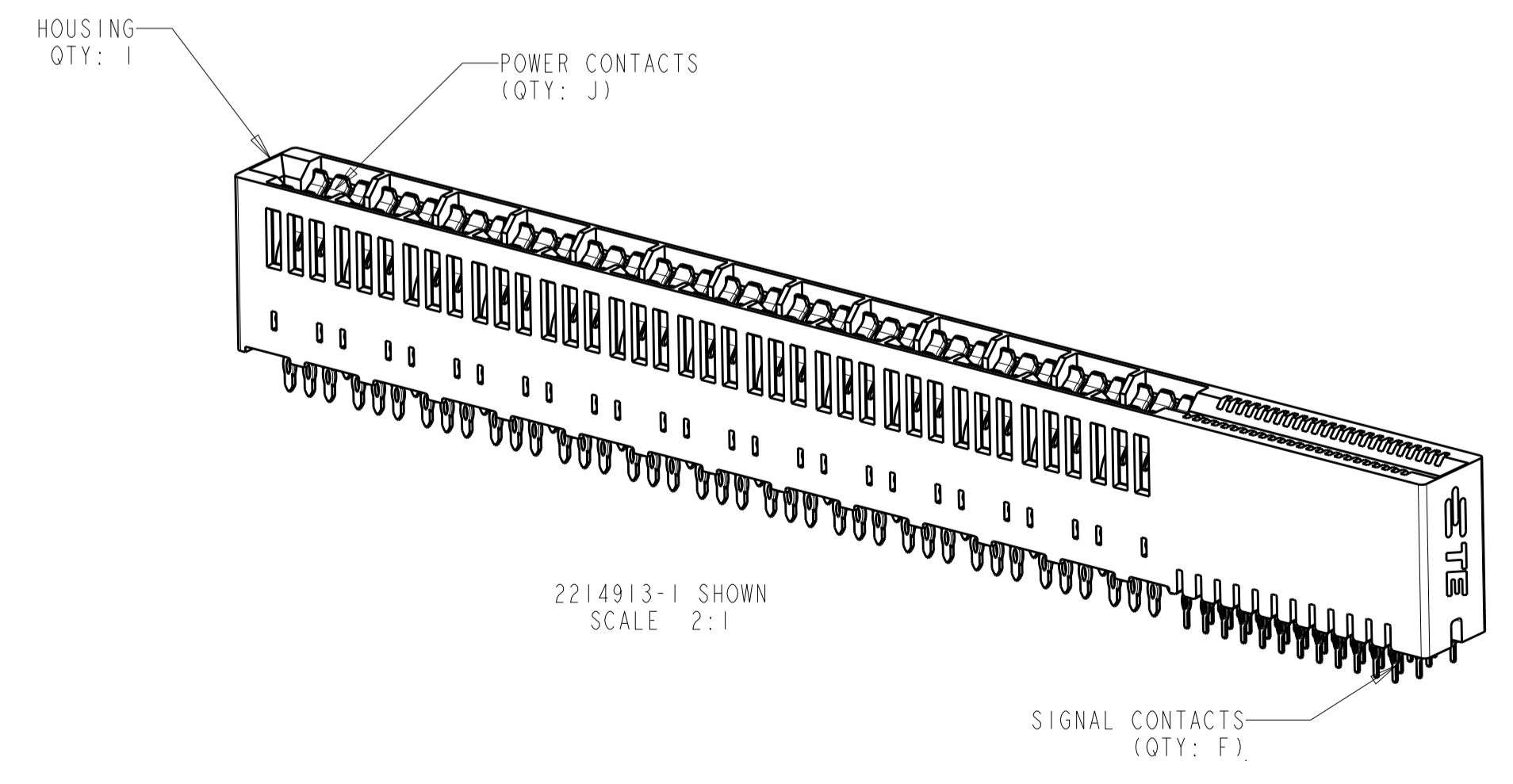


LOC	DIST	REVISIONS					
		P	LTN	DESCRIPTION	DATE	DWN	APVD
AA	00	A		FIRST RELEASE	01AUG2016	SZ	SZ
		A1		ECO-17-002319	20FEB2017	SZ	SZ

- MATERIAL: HOUSING - THERMOPLASTIC, GLASS REINFORCED, COLOR: BLACK
CONTACT - COPPER ALLOY
- FINISH: CONTACT - GOLD PLATED OVER NICKEL.
SOLDER TAILS - MATTE TIN OVER NICKEL
- CONNECTOR ASSEMBLY MARKED WITH PART NUMBER AND DATE CODE IN THE APPROXIMATE AREA SHOWN
- DATUMS AND BASIC DIMENSIONS TO BE ESTABLISHED BY CUSTOMER
- MANUFACTURING TOLERANCE FOR 1.07mm DIAMETER FINISHED HOLE:
DRILLED HOLE = 1.20+/-0.03mm
COPPER PLATE = 0.025-0.050mm (MAX HARDNESS 150 KNOOP)
TIN/LEAD PLATE (HASL) = 0.010/0.004mm
- MANUFACTURING TOLERANCE FOR 0.70mm DIAMETER FINISHED HOLE:
DRILLED HOLE = 0.78+/-0.03mm
COPPER PLATE = 0.025-0.050mm (MAX HARDNESS 150 KNOOP)
TIN/LEAD PLATE (HASL) = 0.010/0.004mm
- CUSTOMIZED SEATING TOOL IS REQUIRED TO INSTALL CONNECTORS CORRECTLY ONTO PC BOARD.



2214913-1 SHOWN



7.44	24.76	6	10.93	4.41	4	18.37	8	12	10	12	2	25.07	27.87	2 X 2 POWER 2 X 6 SIGNAL	2214913-7
19.33	48.54	8	22.82	14.30	10	42.15	20	16	8	30	8	48.85	51.65	2 X 5 POWER 2 X 8 SIGNAL	2214913-6
13.70	37.28	4	17.19	12.675	8	30.89	16	8	6	24	6	37.59	40.39	2 X 4 POWER 2 X 4 SIGNAL	2214913-5
24.96	59.80	12	28.45	15.935	12	53.41	24	24	22	36	10	60.11	62.91	2 X 6 POWER 2 X 12 SIGNAL	2214913-4
15.70	41.28	8	19.19	10.675	8	34.89	16	16	14	24	6	41.59	44.39	2 X 4 POWER 2 X 8 SIGNAL	2214913-3
6.44	22.76	4	9.93	5.415	4	16.37	8	8	6	12	2	23.07	25.87	2 X 2 POWER 2 X 4 SIGNAL	2214913-2
56.37	122.62	24	59.86	35.345	26	116.23	52	48	46	78	24	122.93	125.73	2 X 13 POWER 2 X 24 SIGNAL	2214913-1
P	N	M	L	K	J	H	G	F	E	D	C	B	A	DESCRIPTION	PART NUMBER

THIS DRAWING IS A CONTROLLED DOCUMENT.

DIMENSIONS: mm
 TOLERANCES UNLESS OTHERWISE SPECIFIED:
 0 PLC ±0.5
 1 PLC ±0.25
 2 PLC ±0.25
 3 PLC ±0.25
 4 PLC ±0.25
 ANGLES ±0.5°

MATERIAL: SEE NOTE 1
 FINISH: SEE NOTE 2

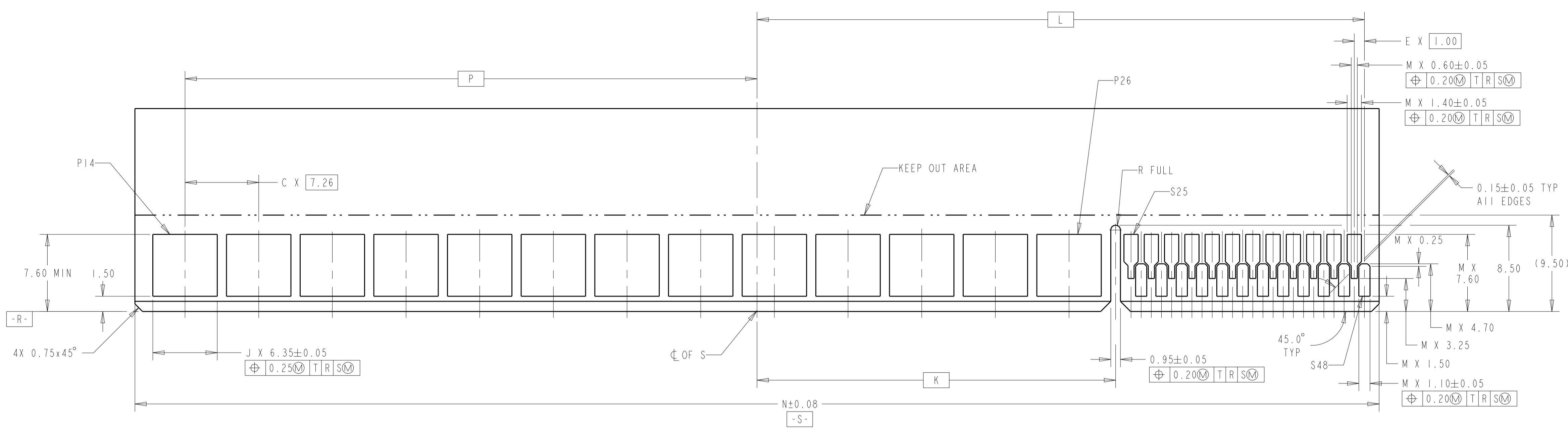
DWN: L.A. NENSEL 05APR2012
 CHG: D. DEE (RAIGH) 05APR2012
 APVD: S. HELCKINGER 05APR2012

NAME: CONNECTOR ASSEMBLY, MULTI-BEAM CE, POWER/SIGNAL, VERTICAL, EYE OF THE NEEDLE
 PRODUCT SPEC: -
 APPLICATION SPEC: -
 WEIGHT: -
 CUSTOMER DRAWING: -

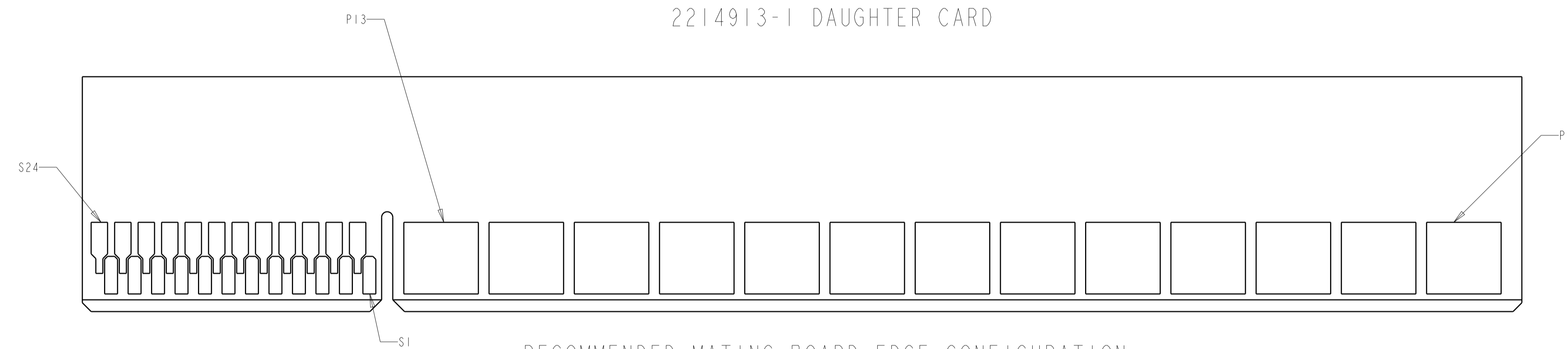
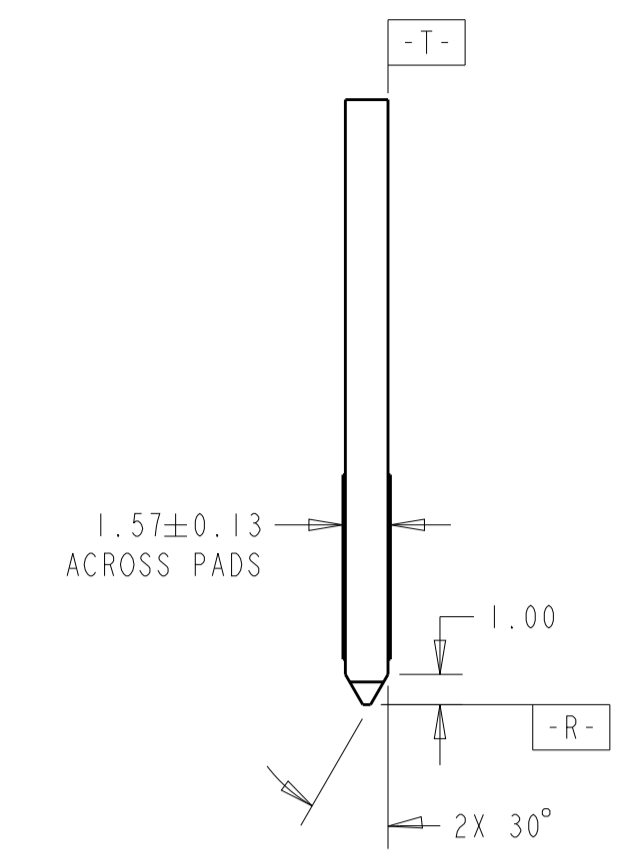
SIZE: A1
 CAGE CODE: 00779
 DRAWING NO: 2214913
 SCALE: 4:1
 SHEET: 1 OF 2
 REV: A1

PRELIMINARY
 TE CONNECTIVITY

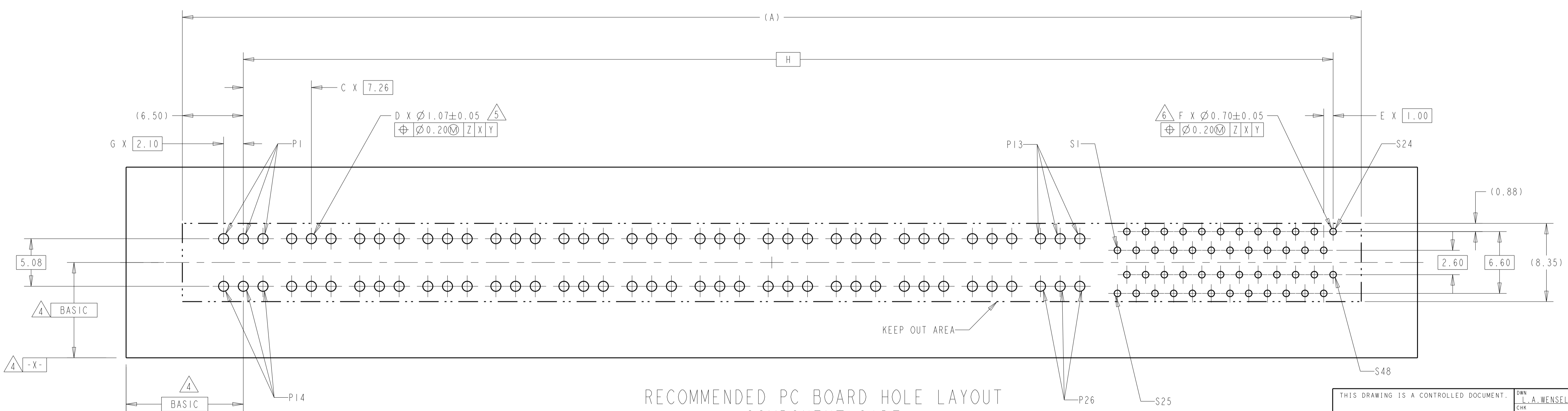
LOC	DIST	REVISIONS			
P	LTN	DESCRIPTION	DATE	OWN	APVD
-	-	SEE SHEET 1	-	-	-



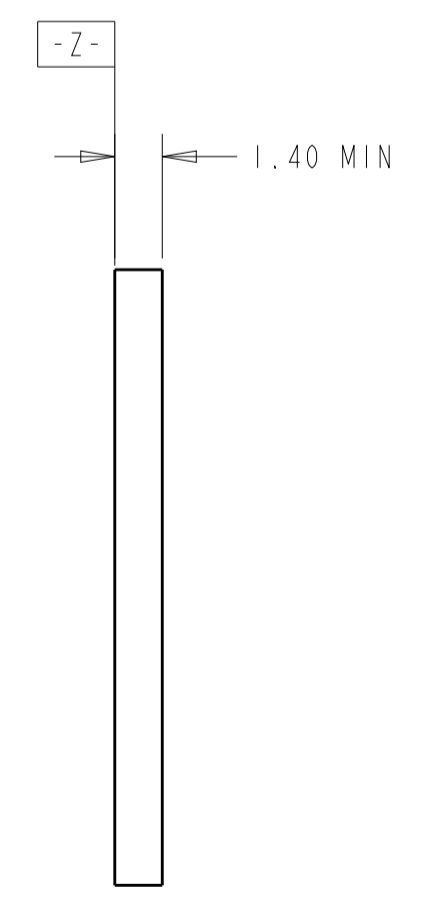
RECOMMENDED MATING BOARD EDGE CONFIGURATION
(PRIMARY SIDE SHOWN)
2214913-1 DAUGHTER CARD



RECOMMENDED MATING BOARD EDGE CONFIGURATION
(SECONDARY SIDE SHOWN)



RECOMMENDED PC BOARD HOLE LAYOUT
COMPONENT SIDE
2214913-1 LAYOUT



THIS DRAWING IS A CONTROLLED DOCUMENT.		OWN: L.A. WENSEL 05APR2012	TE Connectivity
DIMENSIONS: mm		CHK: D. DEFIBAUGH 05APR2012	
TOLERANCES UNLESS OTHERWISE SPECIFIED:		APVD: S. FELICKINGER 05APR2012	NAME: CONNECTOR ASSEMBLY, MULTI-BEAM CE, POWER/SIGNAL, VERTICAL, EYE OF THE NEEDLE SIZE: A1 CAGE CODE: 00779 DRAWING NO: 2214913
0 PLC ±0.3 1 PLC ±0.13 2 PLC ±0.13 3 PLC ±0.13 4 PLC ±0.13 ANGLES ±0.4°		PRODUCT SPEC: -	
MATERIAL: SEE NOTE 1		FINISH: SEE NOTE 2	RESTRICTED TO: -
CUSTOMER DRAWING		SCALE: 1:1	SHEET 2 OF 2 REV A1