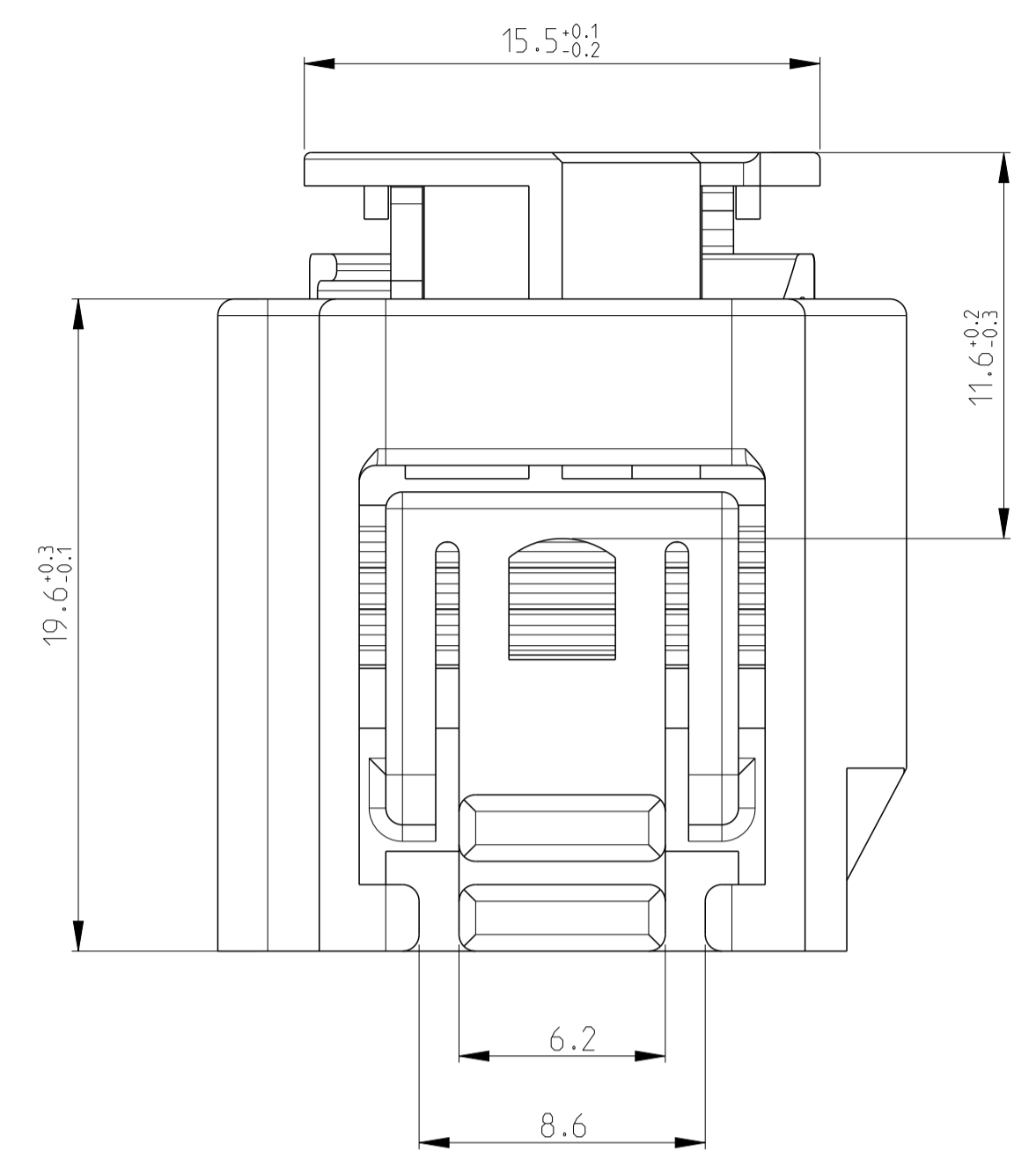
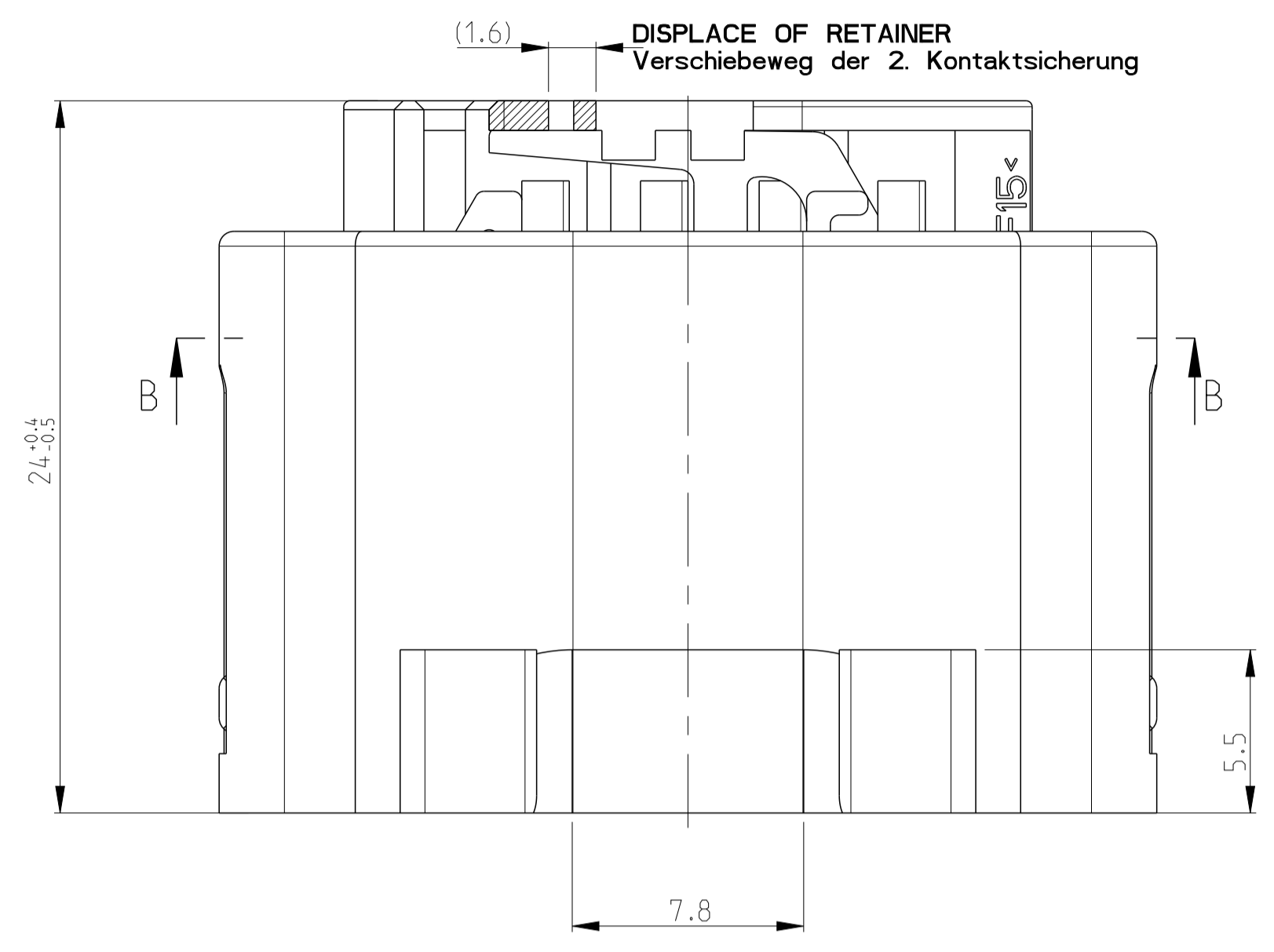
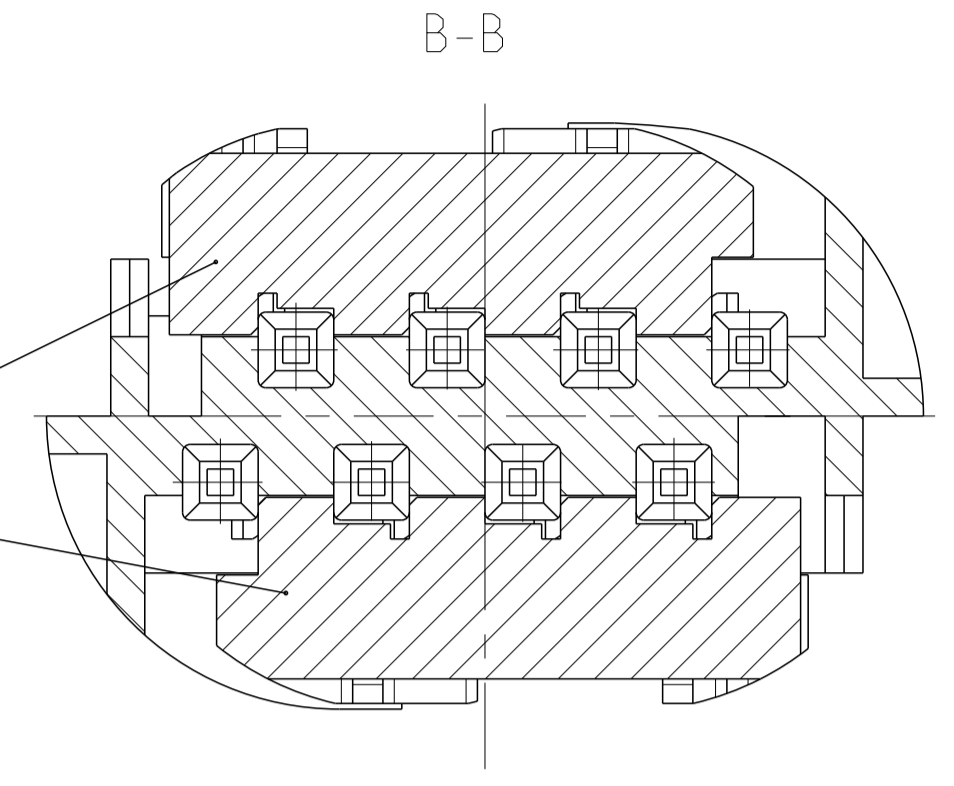


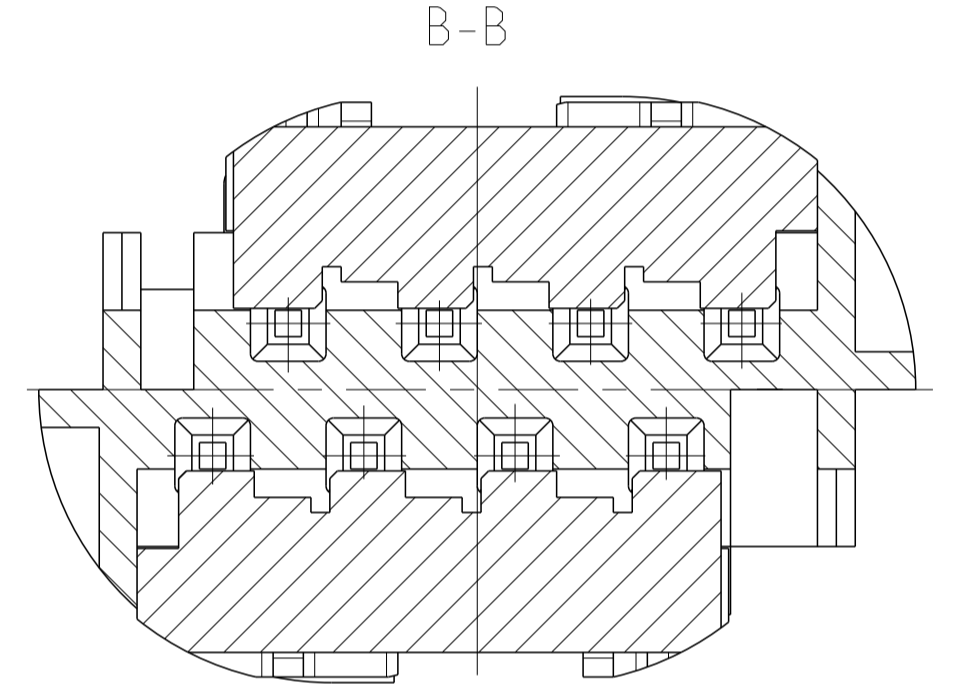
**(CONDITION ON DELIVERY)**  
**(Lieferzustand)**  
 RETAINER IN PRELOCKED POSITION  
 2. Kontaktsicherung in Vorraststellung



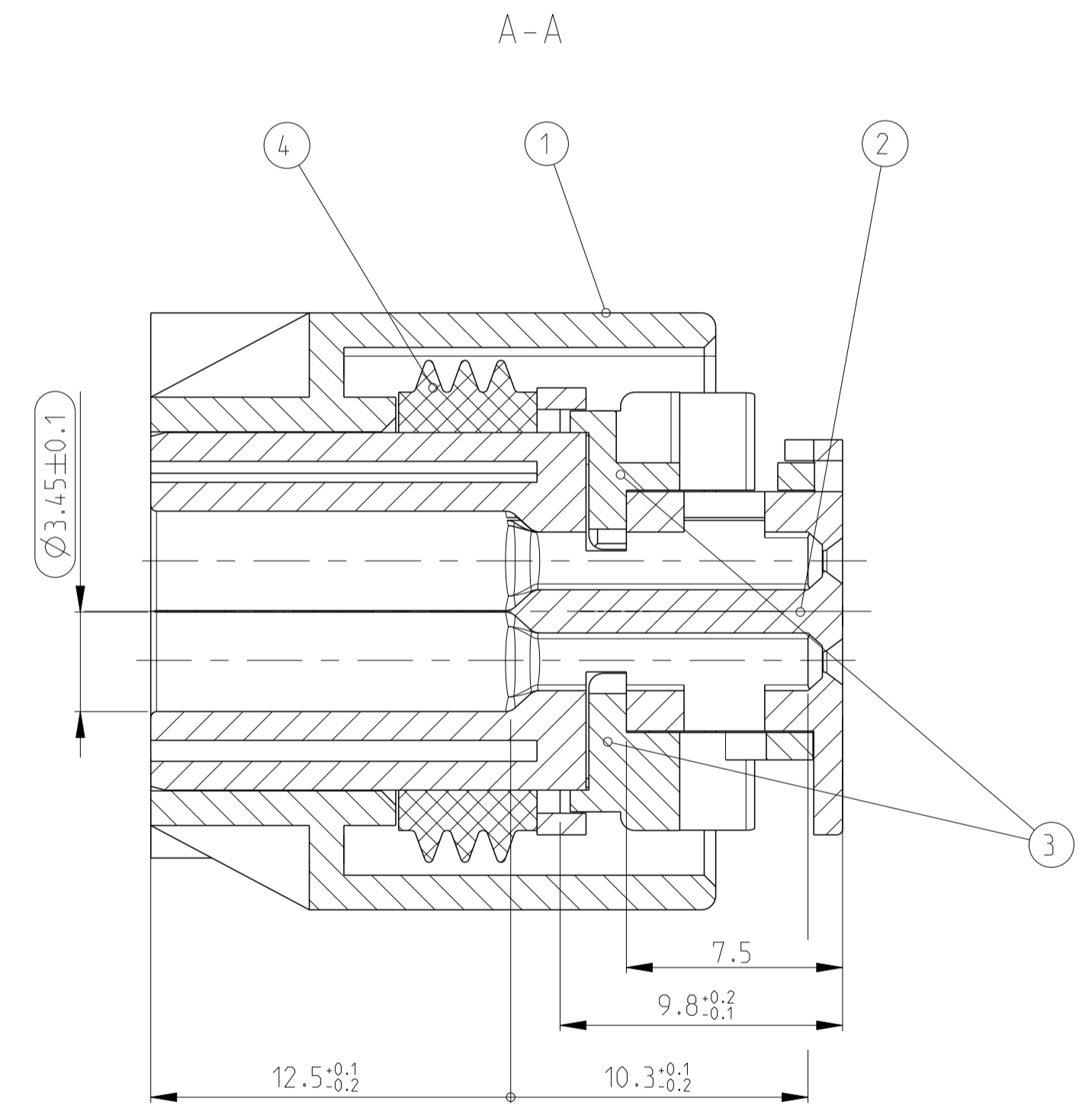
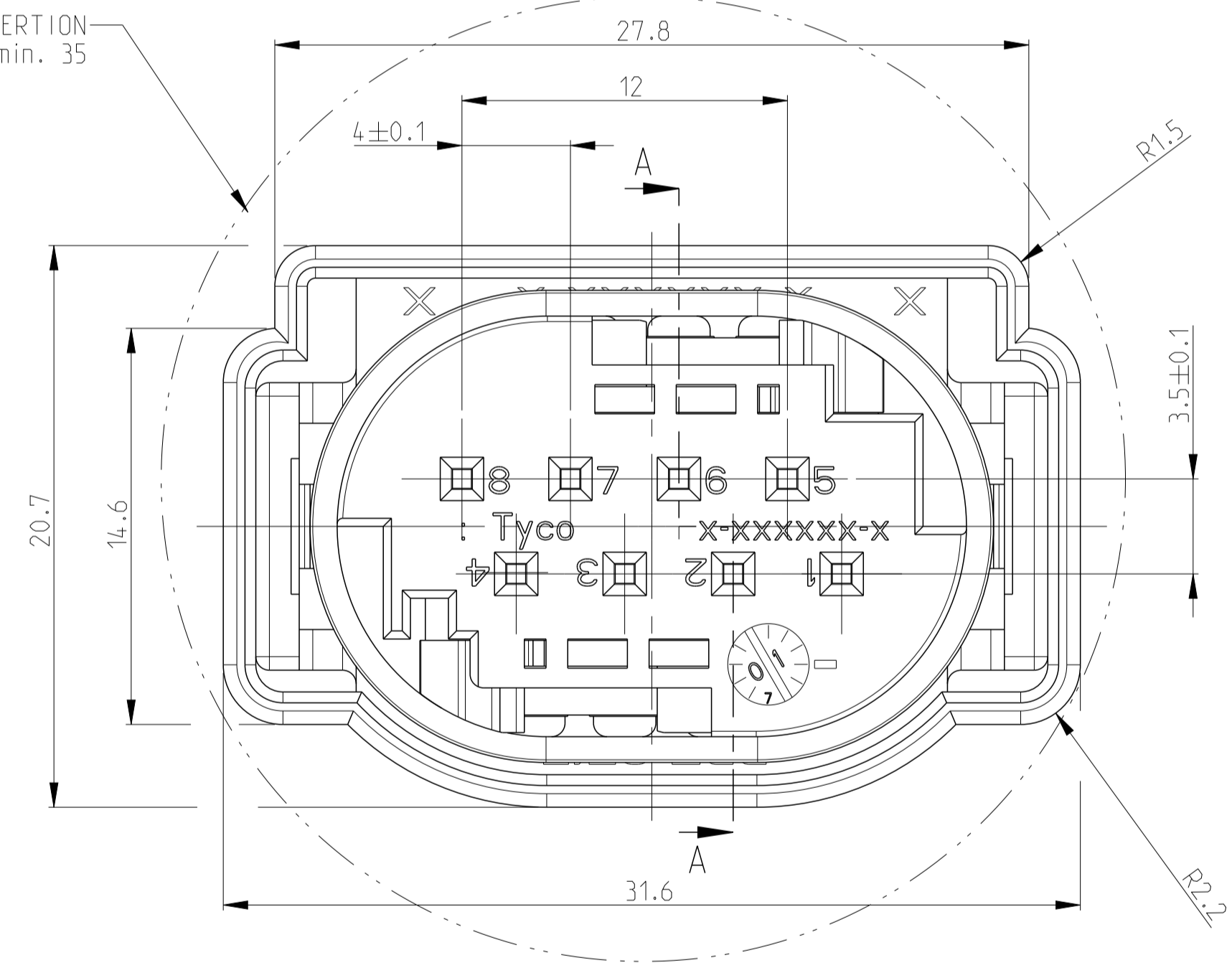
**RETAINER IN PRELOCKED POSITION (CONDITION ON DELIVERY)**  
**2. Kontaktsicherung in Vorraststellung (Lieferzustand)**



**2. Kontaktsicherung in Endraststellung**  
**RETAINER IN ENDOCKED POSITION**



OPENING INSERTION  
 Karosseriedurchbruch Ø min. 35



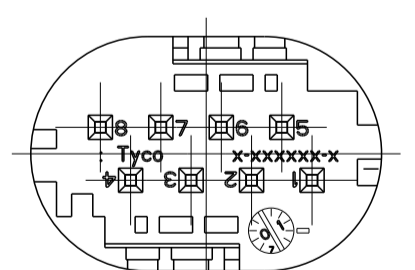
**NOTES**  
 Bemerkungen

- CODING A AS SHOWN  
Kodierung A gezeichnet
- ONLY THE GERMAN-LANGUAGE VERSION SHALL BE BINDING  
Massgebend ist der deutsche Text
- SUITABLE FOR WIRE SIZE RANGE : TO 0.75mm<sup>2</sup>  
Passend fuer Leitungsquerschnitt: bis 0.75mm<sup>2</sup>
- CAVITY 1-4 and 5-8 INJECTED POSSIBLE  
Kammer 1-4 und 5-8 wahlweise zugespritzt moeglich
- SUITABLE FOR SOCKET CONTACT FOR SINGLE WIRE SEALING :  
Passend zu Kontaktbuchse fuer Einzelleiterabdichtung :  
TE 962885 (DGB 0.2-0.5mm<sup>2</sup>) . 965906 (DGB 0.75mm<sup>2</sup>)
- SHROUDED CONNECTION SEE DRAWING 114-18063-128  
Kragenanschluss siehe Zeichnung 114-18063-128

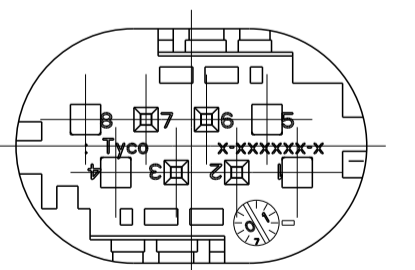
DISPLACE/Verschiebeweg : 2x1.6 mm

**CODINGS 2:1**  
**Kodierungen**

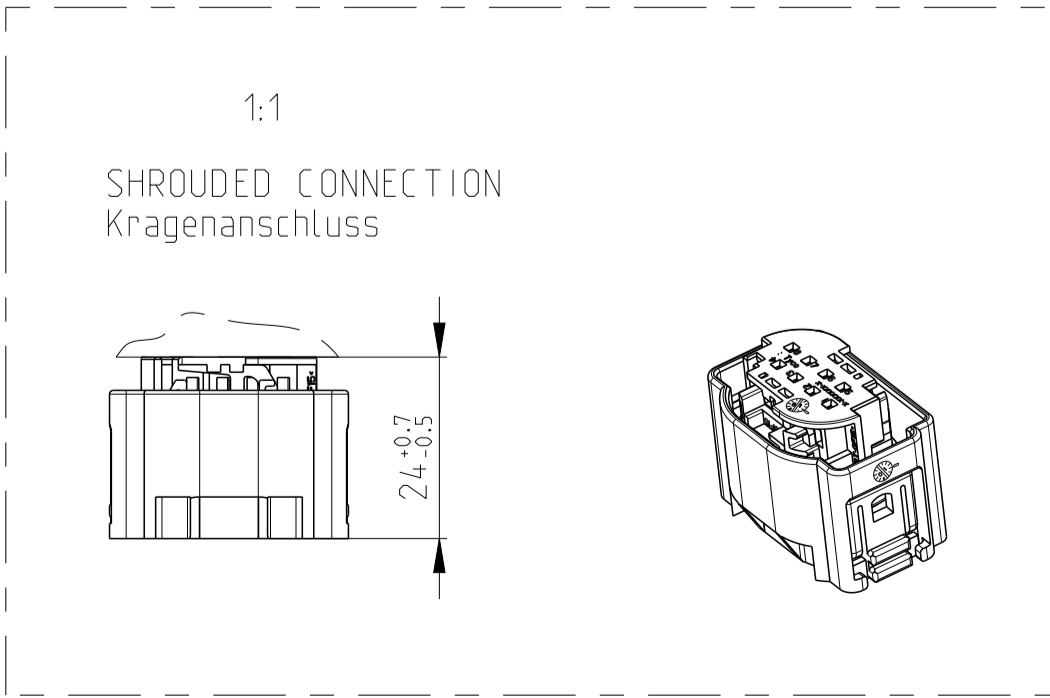
**CODING B**  
**2-1534229-1**



**CODING B**  
**2-1534229-2**



**CAVITY 1,4,5,8 LOCKED**  
**Kammer 1,4,5,8 geschlossen**



TE ORDER NO. BESTELL-NR.	REV.	COD.	POS.	STK. QTY.	DESCRIPTION BENENNUNG	MATERIAL	SURFACE OBERFLAECHE COLOUR/FARBE
2-1534229-2	A	B	4	1	SEALING / Dichtung	MVQ 35	NATURAL / natur
			3	2	RETAINER Kontaktsicherung	PBT-GF15	GREEN / gruен
			2	1	INSERT / Einsatz	PBT-GF15	BROWN / braun
			1	1	COVER / Kappe	PBT-GF15	BLACK / schwarz
2-1534229-1	A	B	4	1	SEALING / Dichtung	MVQ 35	NATURAL / natur
			3	2	RETAINER Kontaktsicherung	PBT-GF15	GREEN / gruен
			2	1	INSERT / Einsatz	PBT-GF15	GREY / grau
			1	1	COVER / Kappe	PBT-GF15	BLACK / schwarz
1-1534229-1	A	A	4	1	SEALING / Dichtung	MVQ 35	NATURAL / natur
			3	2	RETAINER Kontaktsicherung	PBT-GF15	GREEN / gruен
			2	1	INSERT / Einsatz	PBT-GF15	BLACK / schwarz
			1	1	COVER / Kappe	PBT-GF15	BLACK / schwarz

ACC TO DIN 1534229-0 CENTRIC TO NOMINAL DIM		TOLERANCES UNLESS OTHERWISE SPECIFIED: DIMENSIONS: MILLIMETERS		DWN: A. Koperly CHK: M. Schwaeger		DATE: 17 JUL 2001	
PRODUCT SPEC: 108-18272-0 APPLICATION SPEC: 114-18063-1		NAME: Micro Quadlock System SOCKET HOUSING, 8 POS. Buchsengehaeuse, 8-polig		SIZE: A1 CAGE CODE: 00779 DRAWING NO: 1534229		RESTRICTED TO: - REV: A2	
MATERIAL: -		WEIGHT: - GEWICHT: -		SCALE: 5:1 MASSSTAB: 5:1		SHEET: 1 OF 1 BLATT: 1 VON 1	