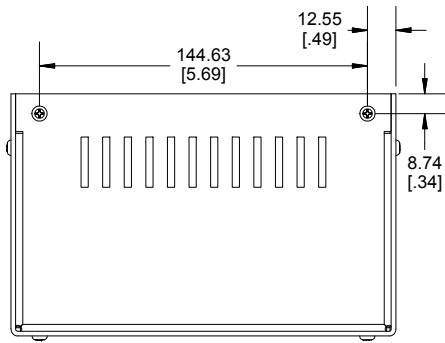
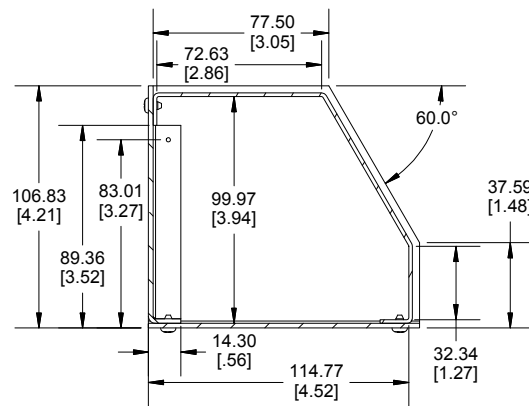


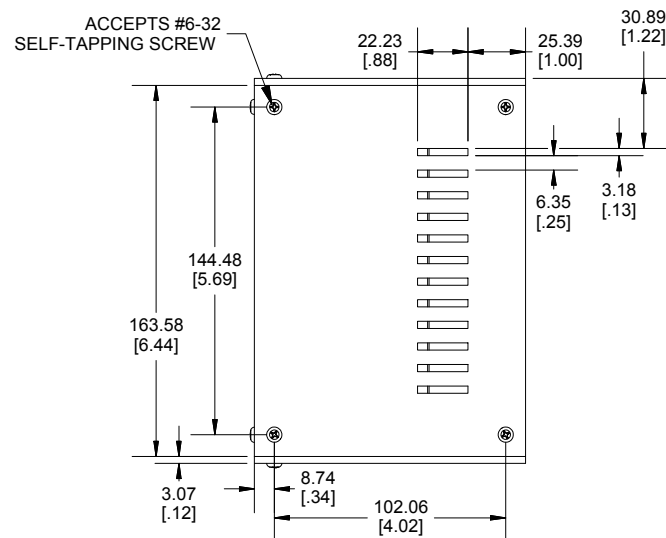
TOP VIEW



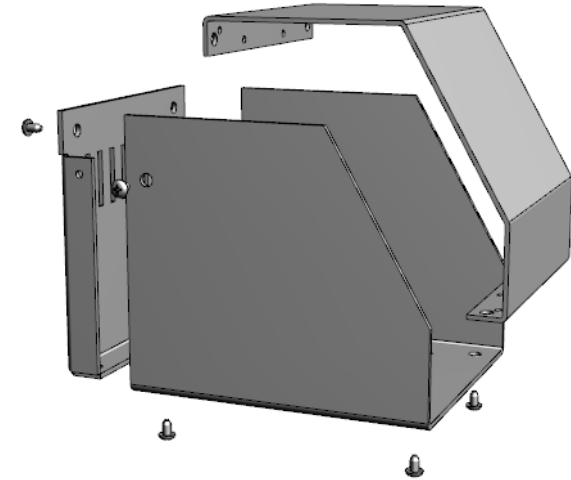
BACK VIEW



SECTION A-A
SIDE VIEW



BOTTOM VIEW



Enclosures can be Factory Modified (Milling, Drilling, Printing etc.)
Contact Factory mjm@hammondmg.com for quotes
Solid models of this enclosure available in STEP or IGES.
(Part number and text placement/orientation on our products are subject to change,
we do not recommend using them as a locating reference for modification purposes)

NOTE

Purchased assembly includes Bottom, Top, Back, 8 cover screws and 4 rubber feet.
Enclosure made from 12 Gauge Aluminum.

Recommended Cover screw torque -- 13-14 lbf-in (150-160 cN-m)

SCEM161110WH

ENCLOSURE

Aluminum painted Blue / Grey

SCEM161110WH

ACCESSORIES

#6-32 x 1/4" Self-Tapping screw (8 pkg)

1421J8



**HAMMOND
MANUFACTURING.**
SCEM161110WH

www.hammondmg.com

Dimensions:
mm
[inches]