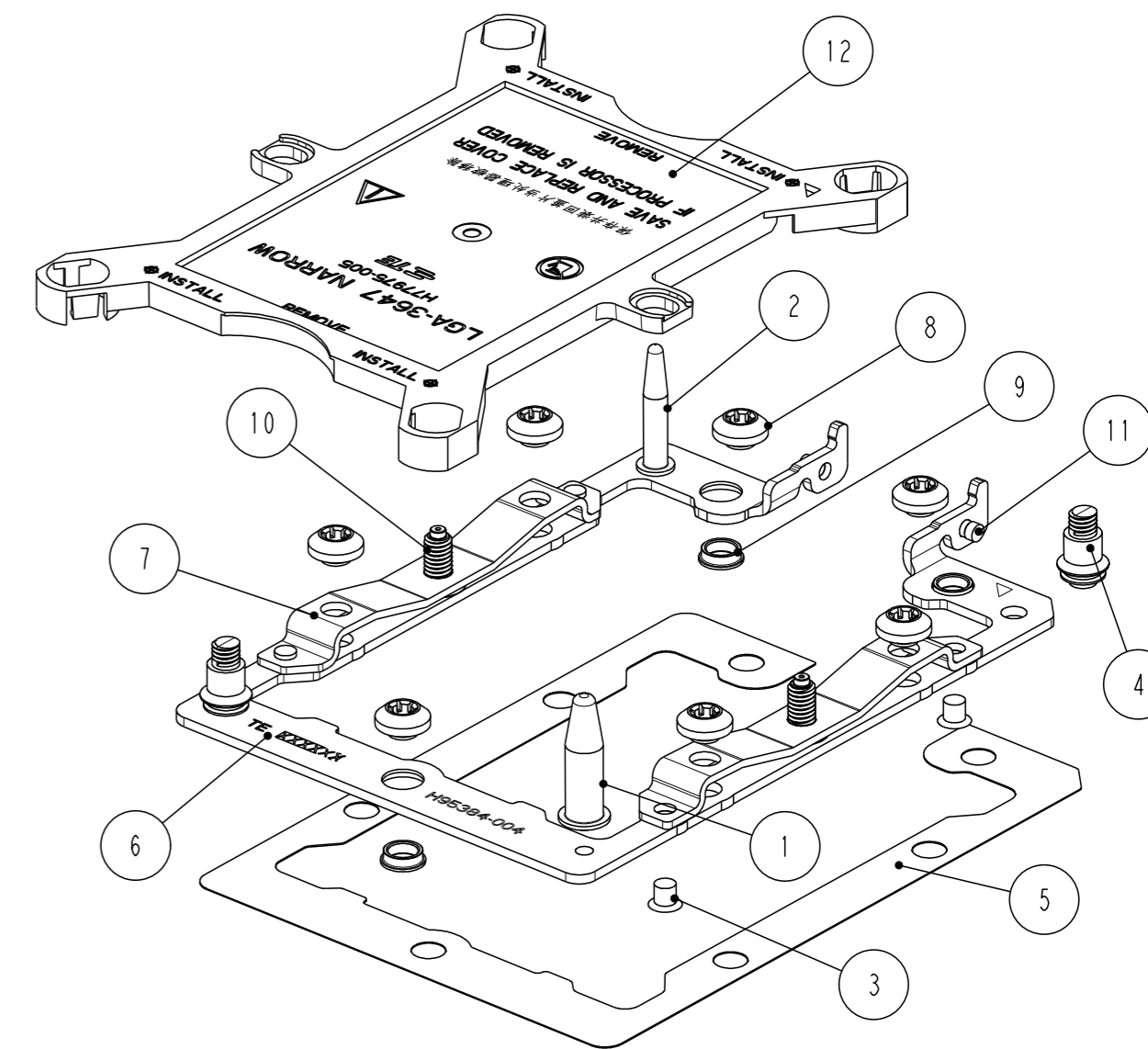
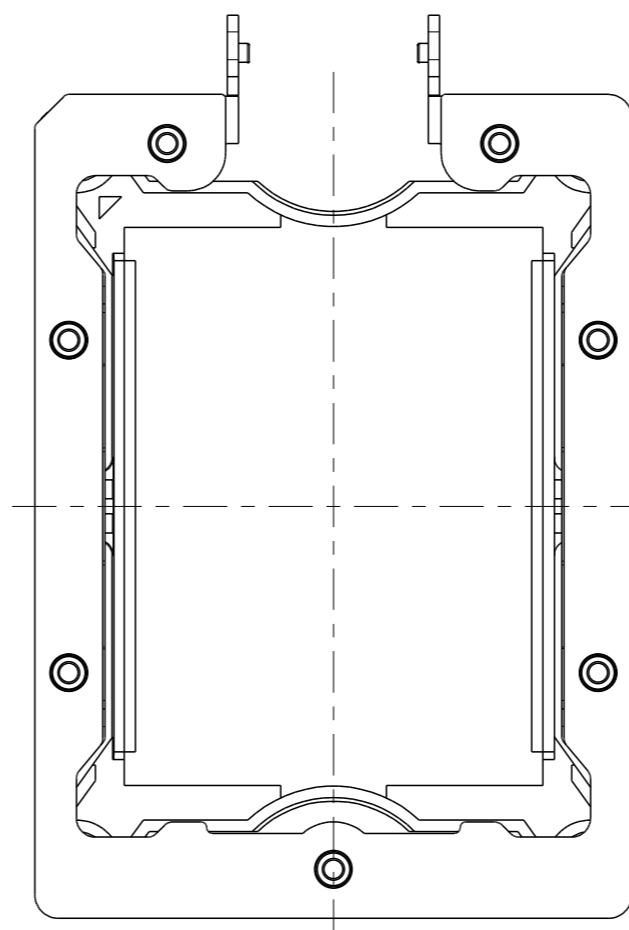
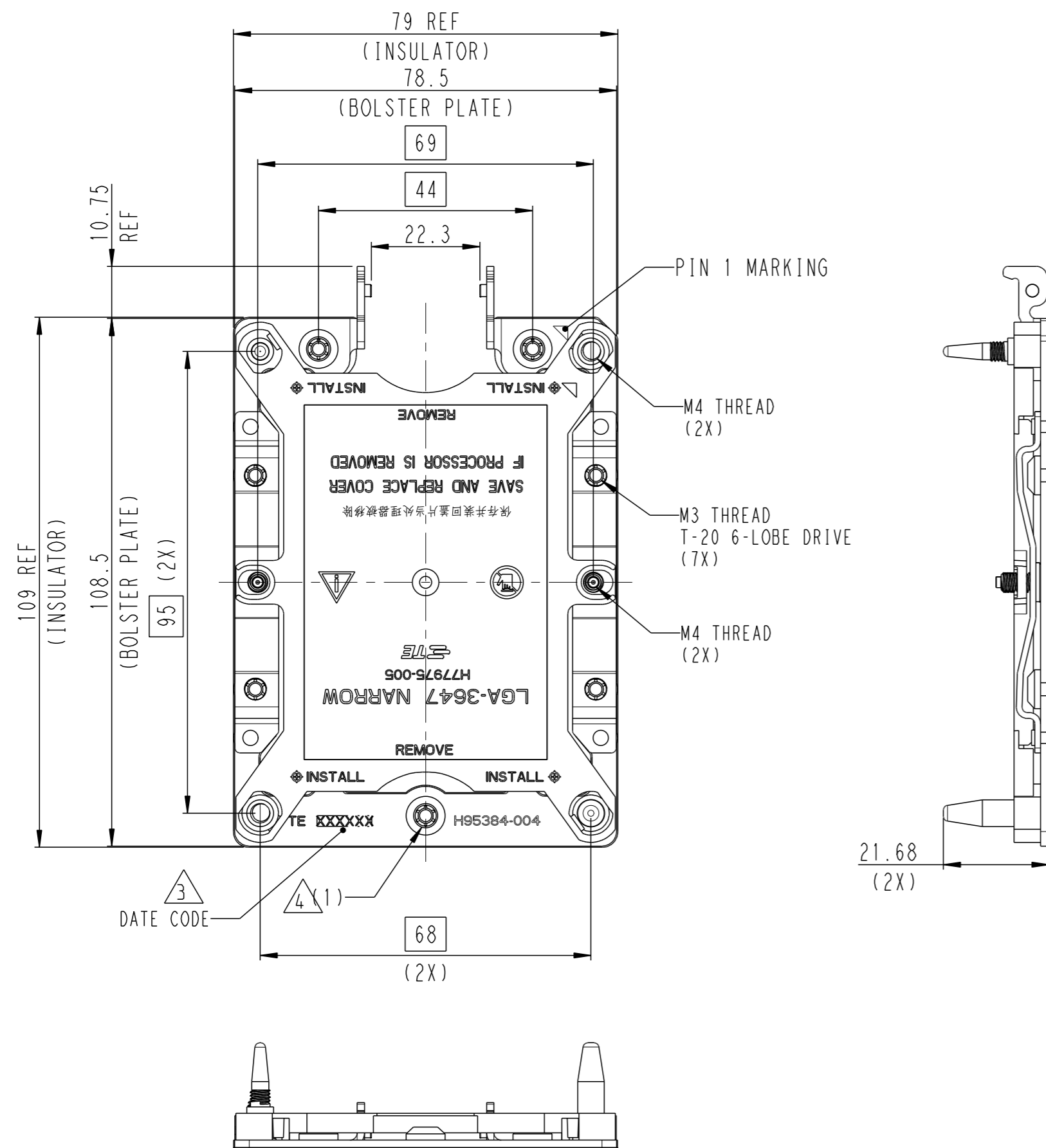


THIS DRAWING IS UNPUBLISHED. RELEASED FOR PUBLICATION  
 © COPYRIGHT copyright\_date BY - ALL RIGHTS RESERVED.

REVISIONS				
P	LTR	DESCRIPTION	DATE	DWN APVD
	A1	REVISED	29MAR17	J.W C.W



NOTES:

- MATERIAL:
  - BOLSTER LARGE GUIDE POST: STAINLESS STEEL
  - BOLSTER SMALL GUIDE POST: STAINLESS STEEL
  - SKT-P-KNL, SPRING RIVET: STAINLESS STEEL
  - SKX BOLSTER CORNER STANDOFF: STAINLESS STEEL
  - SKX NRW NON FABRIC BOLSTER INSULATOR: POLYCARBONATE FILM PLUS ACRYLIC ADHESIVE LAYER
  - SKX NRW NON FABRIC BOLSTER PLATE: STAINLESS STEEL
  - SKX-EP NRW SPRING: STAINLESS STEEL
  - SOCKET P M3 BOLSTER CAPTIVE NUT: CARBON STEEL, NICKEL PLATING
  - SOCKET P M3 BOLSTER CAPTIVE NUT COLLAR: CARBON STEEL, NICKEL PLATING
  - SKT-EP SPRING STUD: STAINLESS STEEL
  - KNL BOLSTER LEC GUIDE PIN: STAINLESS STEEL
  - NRW DUST COVER: THERMO-PLASTIC, UL94V-0, BLACK
- ASSEMBLED WITH BOLSTER ASSEMBLY P/N: 2299805 SERIES
- INDICATED DATE CODE ON THE BOLSTER PLATE
- NUT ASSEMBLY SEQUENCE FOR 6 CYCLES: ASSEMBLE (1) AND THE REMAINING NUTS IN ANY ORDER. DISSASSEMBLE IN REVERSE ORDER OF ASSEMBLE

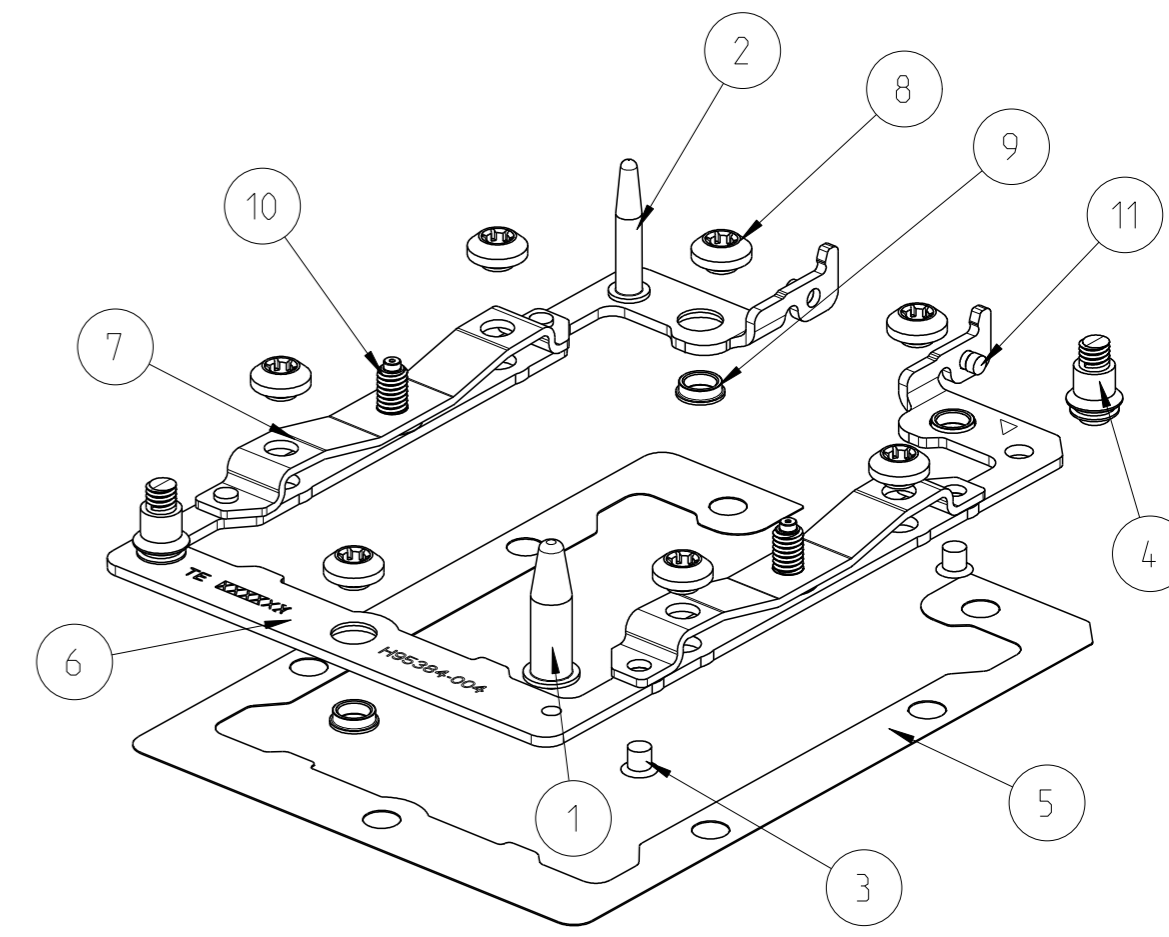
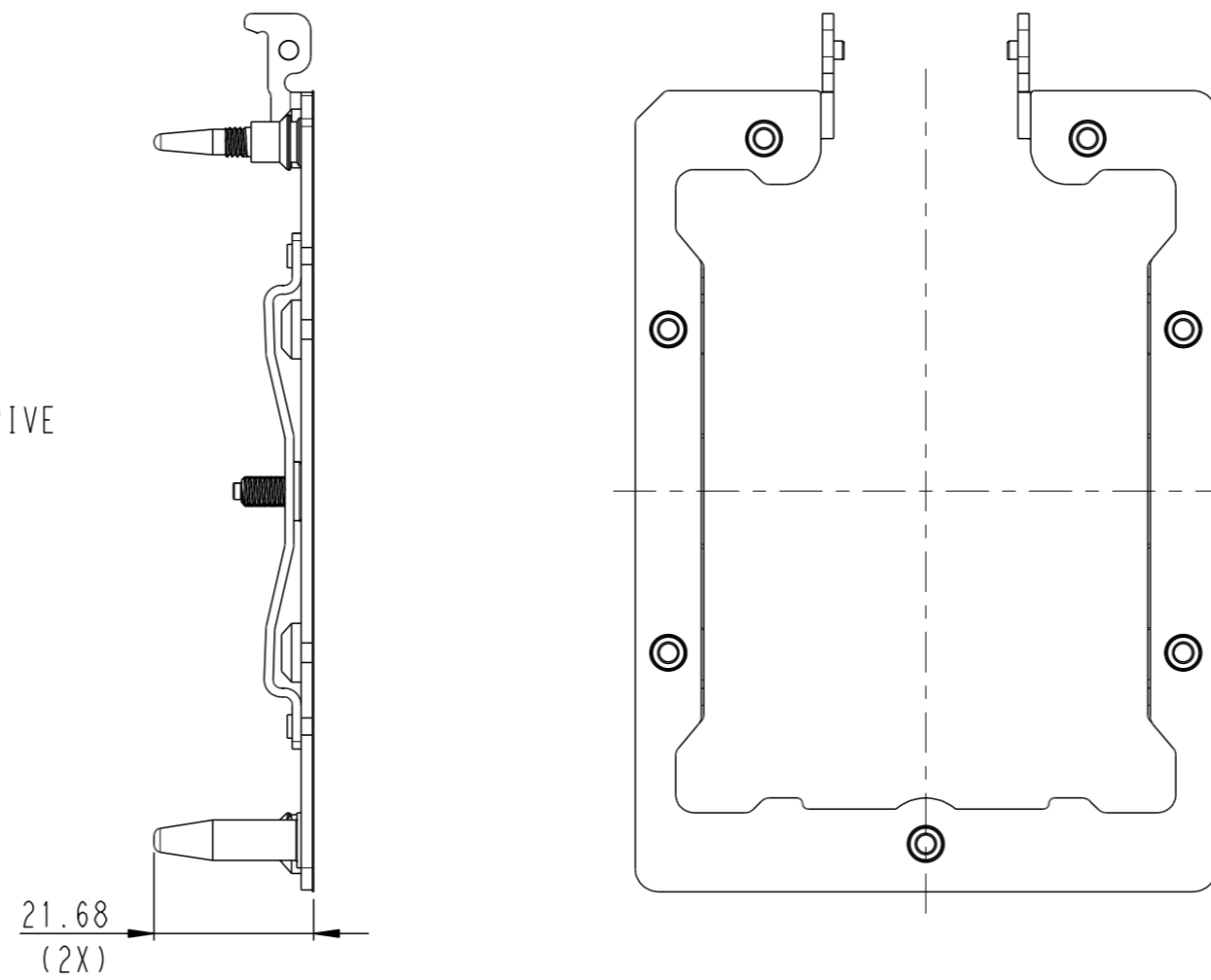
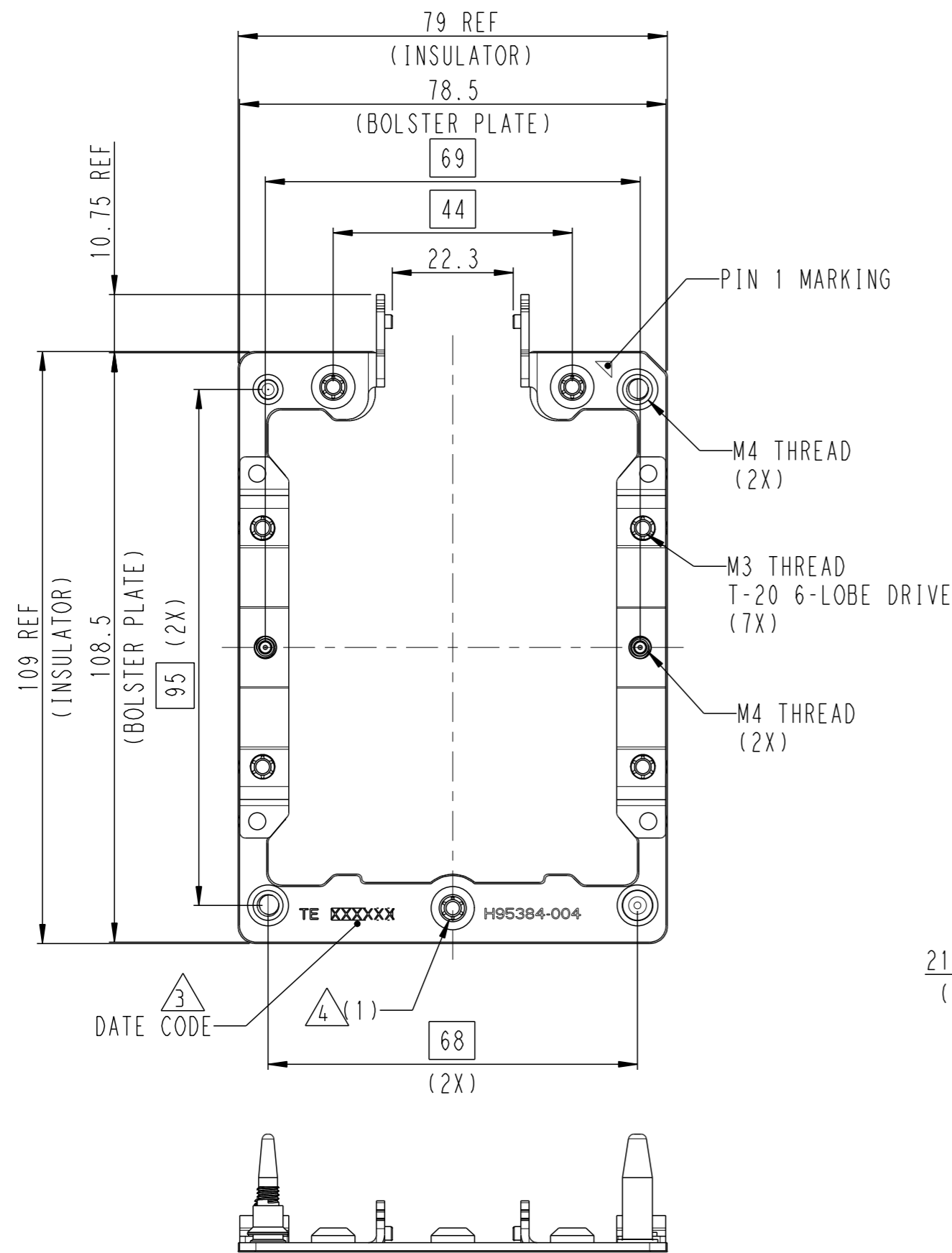
P/N: 2310924-1 AS SHOW  
(NRW FABRIC TYPE WITH COVER)

Q'TY	DESCRIPTION	ITEM
1	NRW DUST COVER	12
2	KNL BOLSTER LEC GUIDE PIN	11
2	SKT-EP SPRING STUD	10
3	SOCKET P M3 BOLSTER CAPTIVE NUT COLLAR	9
7	SOCKET P M3 BOLSTER CAPTIVE NUT	8
2	SKX-EP NRW SPRING	7
1	SKX NRW FABRIC BOLSTER PLATE	6
1	SKX NRW NON FABRIC BOLSTER INSULATOR	5
2	SKX BOLSTER CORNER STANDOFF	4
4	SKT-P-KNL, SPRING RIVET	3
1	KNL BOLSTER SMALL GUIDE POST	2
1	KNL BOLSTER LARGE GUIDE POST	1

THIS DRAWING IS A CONTROLLED DOCUMENT.		DWN: JEFF WANG 14-Nov-2016		
		CHK: SIMON LI 14-Nov-2016		
		APVD: COREL WANG 14-Nov-2016	NAME: COREL WANG	
DIMENSIONS: mm		PRODUCT SPEC: 108-115115	SKX-EP NRW FABRIC BOLSTER PLATE ASSY	
TOLERANCES UNLESS OTHERWISE SPECIFIED:		APPLICATION SPEC: 114-115011	SIZE: A2	RESTRICTED TO: -
MATERIAL: -		WEIGHT: -	CAGE CODE: -	DRAWING NO: C-2310924
		CUSTOMER DRAWING	SCALE: 1:1	SHEET: 1 OF 2
				REV: A1

THIS DRAWING IS UNPUBLISHED. RELEASED FOR PUBLICATION  
 © COPYRIGHT copyright\_date BY - ALL RIGHTS RESERVED.

REVISIONS				
P	LTR	DESCRIPTION	DATE	APVD
-	-	SEE SHEET 1	-	-



NOTES:

1. MATERIAL:

- ① BOLSTER LARGE GUIDE POST: STAINLESS STEEL
- ② BOLSTER SMALL GUIDE POST: STAINLESS STEEL
- ③ SKT-P-KNL, SPRING RIVET: STAINLESS STEEL
- ④ SKX BOLSTER CORNER STANDOFF: STAINLESS STEEL
- ⑤ SKX NRW NON FABRIC BOLSTER INSULATOR:  
-POLYCARBONATE FILM PLUS ACRYLIC ADHESIVE LAYER
- ⑥ SKX NRW NON FABRIC BOLSTER PLATE: STAINLESS STEEL
- ⑦ SKX-EP NRW SPRING: STAINLESS STEEL
- ⑧ SOCKET P M3 BOLSTER CAPTIVE NUT: CARBON STEEL, NICKEL PLATING
- ⑨ SOCKET P M3 BOLSTER CAPTIVE NUT COLLAR: CARBON STEEL, NICKEL PLATING
- ⑩ SKT-EP SPRING STUD: STAINLESS STEEL
- ⑪ KNL BOLSTER LEC GUIDE PIN: STAINLESS STEEL

- 2. ASSEMBLED WITH BOLSTER ASSEMBLY P/N: 2299805 SERIES
- ③ INDICATED DATE CODE ON THE BOLSTER PLATE
- ④ NUT ASSEMBLY SEQUENCE FOR 6 CYCLES:  
ASSEMBLE (1) AND THE REMAINING NUTS IN ANY ORDER.  
DISSASSEMBLE IN REVERSE ORDER OF ASSEMBLE

P/N: 2310924-3 AS SHOW  
 (NRW FABRIC TYPE WITHOUT COVER)

Q'TY	DESCRIPTION	ITEM
2	KNL BOLSTER LEC GUIDE PIN	11
2	SKT-EP SPRING STUD	10
3	SOCKET P M3 BOLSTER CAPTIVE NUT COLLAR	9
7	SOCKET P M3 BOLSTER CAPTIVE NUT	8
2	SKX-EP NRW SPRING	7
1	SKX NRW FABRIC BOLSTER PLATE	6
1	SKX NRW NON FABRIC BOLSTER INSULATOR	5
2	SKX BOLSTER CORNER STANDOFF	4
4	SKT-P-KNL, SPRING RIVET	3
1	KNL BOLSTER SMALL GUIDE POST	2
1	KNL BOLSTER LARGE GUIDE POST	1

THIS DRAWING IS A CONTROLLED DOCUMENT.

DWN JEFF WANG 14-Nov-2016		NAME		
CHK SIMON LI 14-Nov-2016		SKX-EP NRW FABRIC BOLSTER PLATE ASSY		
APVD COREL WANG 14-Nov-2016		SIZE A2	CAGE CODE -	DRAWING NO C-2310924
PRODUCT SPEC 108-115115		RESTRICTED TO -	SCALE 1:1	SHEET 2 OF 2
DIMENSIONS: mm	TOLERANCES UNLESS OTHERWISE SPECIFIED: 0 PLC ±0.3 1 PLC ±0.3 2 PLC ±0.3 3 PLC ±0.3 4 PLC ±0.3 ANGLES ±3 FINISH	APPLICATION SPEC 114-115011	REV A1	
MATERIAL	WEIGHT	CUSTOMER DRAWING		