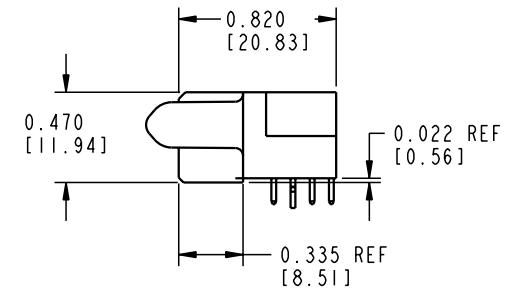
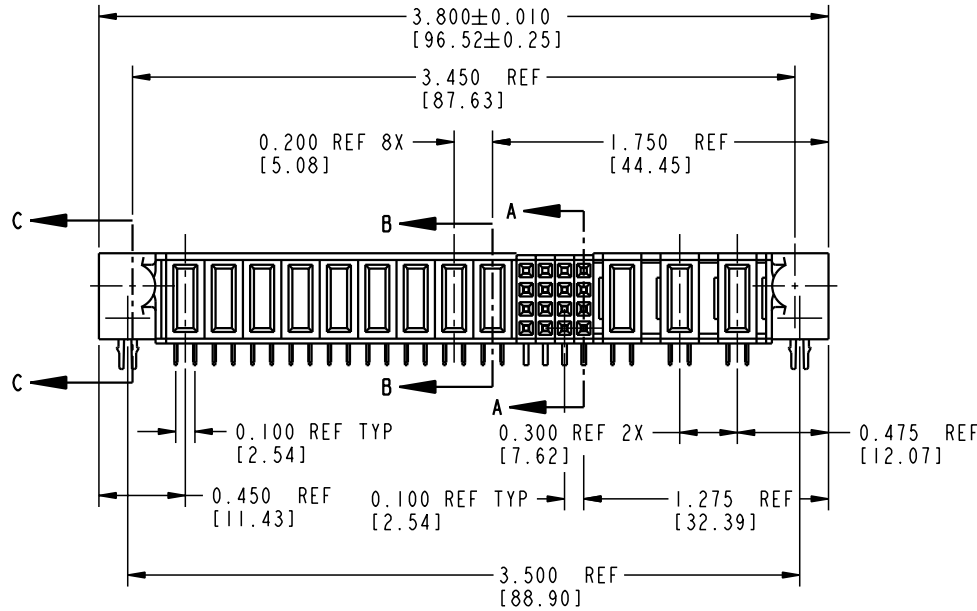


Tous droits strictement réservés. Reproduction ou communication a des tiers interdite sous quelque forme que ce soit sans autorisation écrite du propriétaire. Propriété de c FCI. Droits de reproduction FCI.



All rights strictly reserved. Reproduction or issue to third parties in any form whatever is not permitted without written authority from the proprietor. Property of FCI. Copyright FCI.

PRODUCT No.	ROWS	POWER										SIGNAL				POWER			
		E2	P12	P11	P10	P9	P8	P7	P6	P5	P4	4	3	2	1	P3	P2	P1	E1
51915-001	D C B A	HA	PA	PA	PA	PA	PA	PA	PA	PA	PA	H	H	H	H	PA	PC	PC	HA
												G	G	G	G				
												F	F	F	F				
												E	E	E	E				



CODE	CONTACT TYPE
E	SIGNAL
F	SIGNAL
G	SIGNAL
H	SIGNAL
PA	POWER
PC	POWER
HA	HOLD-DOWN

mat'l code				NOTE 1		tolerances unless otherwise specified		CUSTOMER		FCI ELECTRONICS	
ltr	ecn no.	dr	date	linear	.XX±.01/0.X±0.3	.XXX±.005/0.XX±0.13	.XXXX±.0020/0.XXX±0.051	projection	COPY	title	www.fciconnect.com
A	V11761	JRW	6/27/01								
				angles	0°±2°					3ACP + 16S + 9P	
				dr	J. WITMER	6/27/01				RIGHT ANGLE SOLDER RECEPTACLE	
				enr	J. ALLISON	6/27/01				product family	PwrBlade
				chr	J. ALLISON	6/27/01				size	dwg no
				appd	J. ALLISON	6/27/01				A	51915
sheet index	revision	A	A							code	213
	sheet	1	2							sheet	1 of 2

Pro/E

3

cage code 22526

4

PDM: Rev:A

STATUS: Released

Printed: Oct 07, 2006

1 | 2

3

4

PRODUCT NUMBER

51915-001

CONNECTOR NOTES:

①. HOUSING MATERIAL: UL 94 V-0 GLASS FILLED HIGH TEMP THERMOPLASTIC
POWER CONTACT MATERIAL: COPPER ALLOY
SIGNAL CONTACT MATERIAL: COPPER ALLOY

2. PLATING:

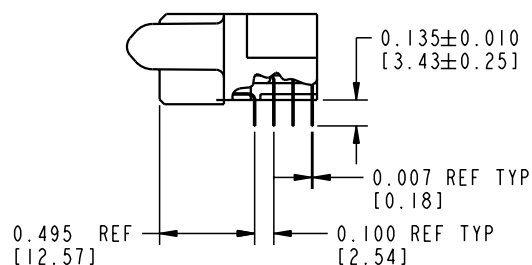
SIGNAL PINS: 30u"/0.76u Au OVER 50u"/1.27u Ni
POWER CONTACTS: 50u"/1.27u Ni UNDER ALL:
WITH 30u"/0.76u Au ON CONTACT AREA
AND SnPb ON PCB INTERFACE

3. "MANUFACTURER'S" NAME, P/N, AND DATE CODE TO APPEAR ON THIS SURFACE

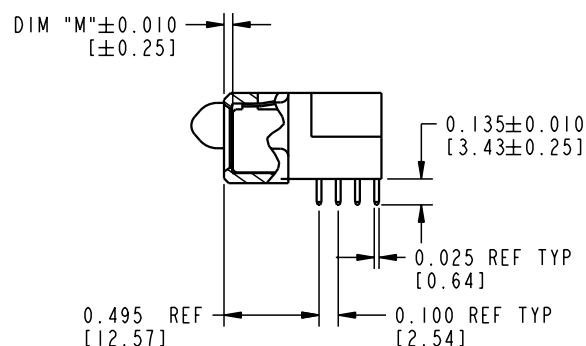
4. PRODUCT SPECIFICATION GS-12-149

PCB NOTES:

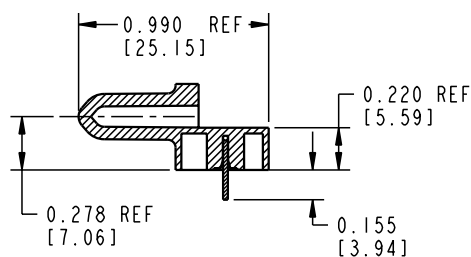
5. ALL DIMENSIONS ARE BASIC UNLESS OTHERWISE SPECIFIED.
6. ALL THROUGH HOLES ARE LOCATED WITH A TRUE POSITION OF 0.004 [0.10]
7. ALL HOLE DIAMETERS ARE FINISHED HOLE SIZE
8. $\varnothing 0.098[2.49]$ THROUGH HOLES ARE UNPLATED.
9. $\varnothing 0.045 \pm 0.0010$ [1.51 \pm 0.025] DRILLED HOLES PLATED WITH
0.0003 [0.008] MIN Sn/Pb OVER 0.001 [0.03] TO 0.003 [0.08] Cu
PLATING TO ACHIEVE A $\varnothing 0.040 \pm 0.003$ [1.02 \pm 0.07] HOLE.



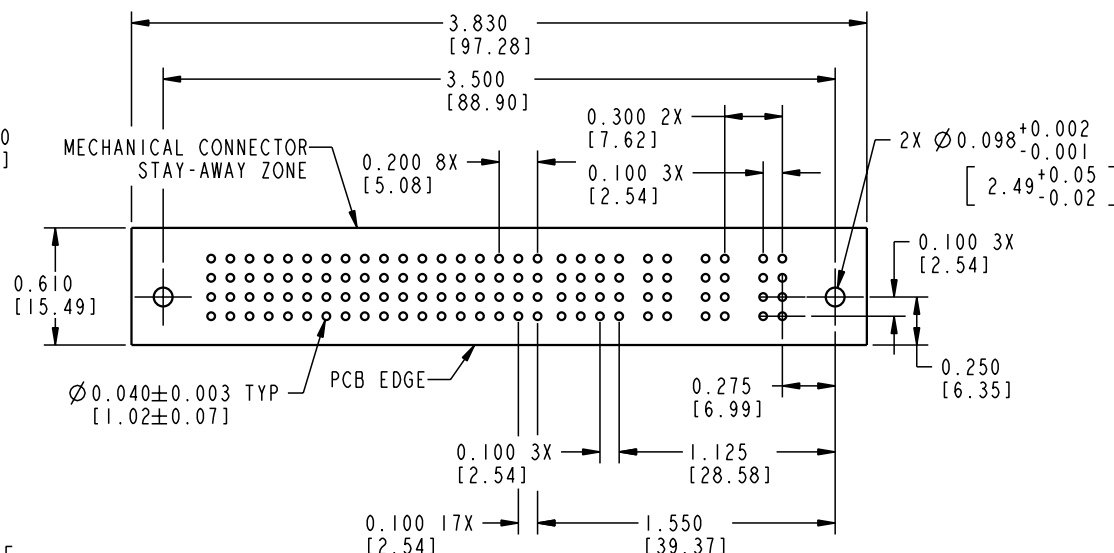
SECTION A-A


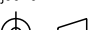



SECTION B-B



SECTION C-C



mat'l code				NOTE 1		tolerances unless otherwise specified		CUSTOMER		 ELECTRONICS www.fciconnect.com		
lfr	ecn no.	dr	date	linear	$.XX \pm .01/0.X \pm 0.3$ $.XXX \pm .005/0.XX \pm 0.13$ $.XXXX \pm .0020/0.XXX \pm 0.051$			COPY		 projection	title 3ACP + 16S + 9P RIGHT ANGLE SOLDER RECEPTACLE	
A					angles	$0^\circ \pm 2^\circ$			 INCH/MM			
						dr	J. WITMER	6/27/01	product family			PwrBlade
				enrg		J. ALLISON	6/27/01	size	dwg no	213		
				chr	J. ALLISON	6/27/01	scale		A	51915	sheet 2	
				appd	J. ALLISON	6/27/01	1:1					
sheet index		revision sheet										

Pro/E

3

cage code	22526
-----------	-------

4

PDM: Rev:A

STATUS: **Released**

Printed: Oct 07, 2006