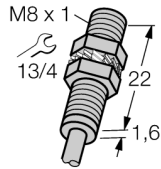


Magnetic field sensor BR-EG08K-ADZ71

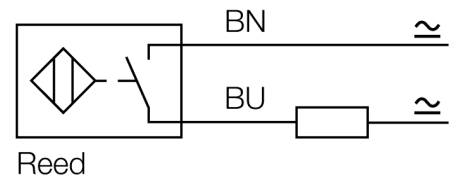
TURCK
works

Industrial
Automation



- M8 × 1 threaded barrel
- Stainless steel, 1.4427 SO
- Reed contact (non-polarized)
- AC 2-wire, 3...140 VAC
- DC 2-wire, 4...200 VDC
- Cable connection

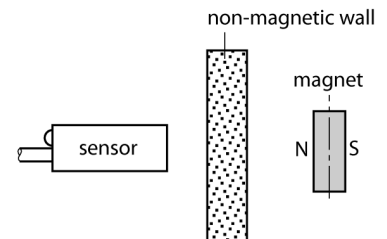
Wiring Diagram



Functional principle

Magnetic inductive proximity switches are actuated by magnetic fields. They detect permanent magnets through non-ferromagnetic materials such as wood, plastic, non-ferrous metals, aluminium or stainless steel.

Even small-sized versions achieve large switching distances. In combination with the actuation magnet DMR31-15-5 TURCK sensors obtain a relatively high switching distance. Thus there are multiple detection possibilities, particularly if the mounting space is limited or other difficult sensing conditions prevail.



Type designation	BR-EG08K-ADZ71
Ident-No.	4700520
Ident-No (TUSA)	S4700520
Pass speed	≤ 10 m/s
Repeatability	≥ ± 0.1 mm
Temperature drift	≤ 0.1 mm
Hysteresis	≤ 1 mm
Ambient temperature	-25...+90 °C
Operating voltage	3...140VAC
Operating voltage	4...200 VDC
AC rated operational current	≤ 100 mA
DC rated operational current	≤ 100 mA
Switching capacity	≤ 10 W
No-load current I_0	≤ 0 mA
Residual current	≤ 0 mA
Isolation test voltage	≤ 0.5 kV
Short-circuit protection	no
Voltage drop at I_0	≤ 0.5 V
Wire breakage/Reverse polarity protection	no/ yes
Output function	2-wire, NO contact, Reed
Switching frequency	0.5 kHz
Design	Threaded barrel, M8 × 1
Dimensions	23.6 mm
Housing material	Stainless steel, 1.4427 SO
Active area material	Plastic, PA12-GF20
End cap	Plastic, PP
Max. tightening torque housing nut	5 Nm
Electrical connection	Cable
Cable quality	3mm, Gray, Lif9Y-11Y, PUR, 2
Cable cross section	2 x 0.14 mm ²
Vibration resistance	55 Hz (1 mm)
Shock resistance	30 g (11 ms)
Protection class	IP67

**Magnetic field sensor
BR-EG08K-ADZ71**



Diameter active area B

Ø 8 mm

**Magnetic field sensor
BR-EG08K-ADZ71**



Accessories

Type code	Ident-No.	Description	
DMR20-10-4	6900214	Actuation magnet; Ø 20 mm (Ø 4 mm), h: 10 mm; sensing range 59 mm on BIM-(E)M12 sensors resp. 50 mm on BIM-EG08 sensors; in combination with Q25L: Recommended distance between sensor and magnet: 3 ... 4 mm	
DMR31-15-5	6900215	Actuation magnet, Ø 31 mm (Ø 5 mm), h: 15 mm; sensing range 90 mm on BIM-(E)M12 sensors resp. 78 mm on BIM-EG08 sensors; in combination with Q25L: Recommended distance between sensor and magnet: 3 ... 5 mm	
DMR15-6-3	6900216	Actuation magnet, Ø 15 mm (Ø 3 mm), h: 6 mm; sensing range 36 mm on BIM-(E)M12 sensors resp. 32 mm on BIM-EG08 sensors; in combination with Q25L: Recommended distance between sensor and magnet: 3 ... 4 mm	
MW-08	6945008	Mounting bracket for threaded barrel devices; material: Stainless steel A2 1.4301 (AISI 304)	
DM-Q12	6900367	Actuation magnet; rectangular, plastic; attainable switching distance 58 mm on BIM-(E)M12 sensors resp. 49 mm on BIM-EG08 sensors; in combination with Q25L linear position sensors: recommended distance between the sensor and magnet: 3...5 mm	

Magnetic field sensor BR-EG08K-ADZ71



Function accessories

Type code	Ident-No.	Description	
BSS-08	6901322	Mounting bracket for smooth and threaded barrel devices; material: Polypropylene	