

PRODUCT DESCRIPTION CODE :

10131933-YXXXLF

PLATING :
 ————— R_oHS COMPATIBLE, SEE NOTE 3
 ————— PACKAGING : "A" TAPE & REEL
 "U" TUBE
 ————— TOTAL NUMBER OF POSITIONS 04 TO 50

- 1 = 0.76 μm GOLD ON CONTACT AREA
 2.54 μm MIN MATTE TIN ON TAIL
- 2 = 0.38 μm GOLD ON CONTACT AREA
 2.54 μm MIN MATTE TIN ON TAIL
- 3 = 0.20 μm GOLD ON CONTACT AREA
 2.54 μm MIN MATTE TIN ON TAIL
- 4 = 0.76 μm GXT ON CONTACT AREA
 2.54 μm MIN MATTE TIN ON TAIL
- 5 = 0.38 μm GXT ON CONTACT AREA
 2.54 μm MIN MATTE TIN ON TAIL
- 6 = 0.20 μm GXT ON CONTACT AREA
 2.54 μm MIN MATTE TIN ON TAIL
- 9 = 2.54 μm MIN MATTE TIN FULL PLATED
- 1.27 μm NICKEL MIN UNDERLAYER

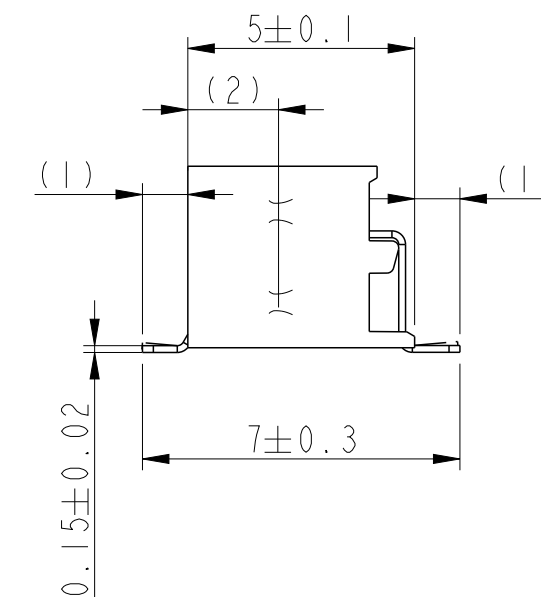
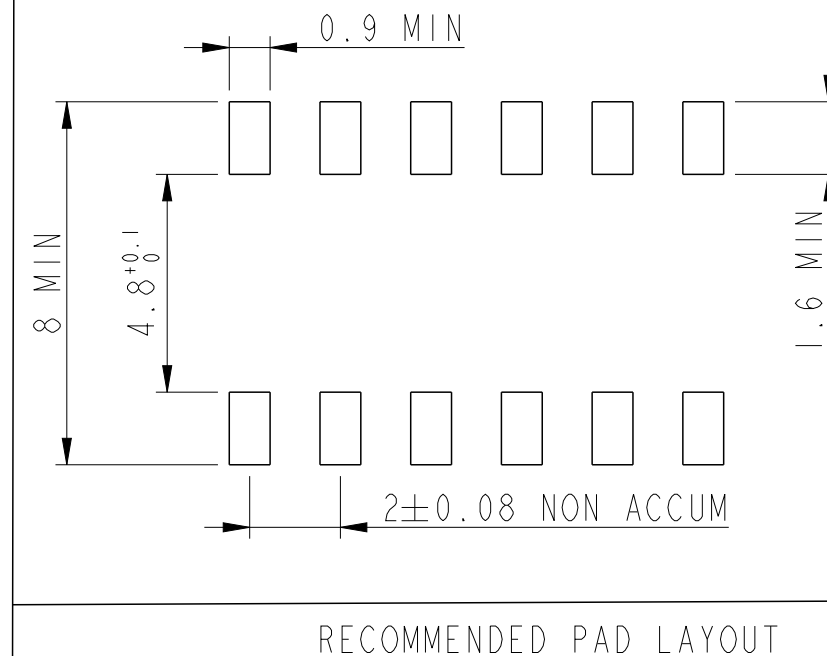
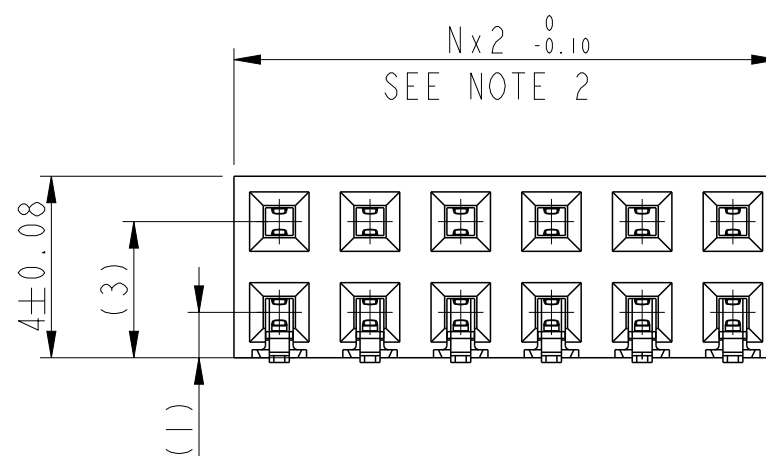
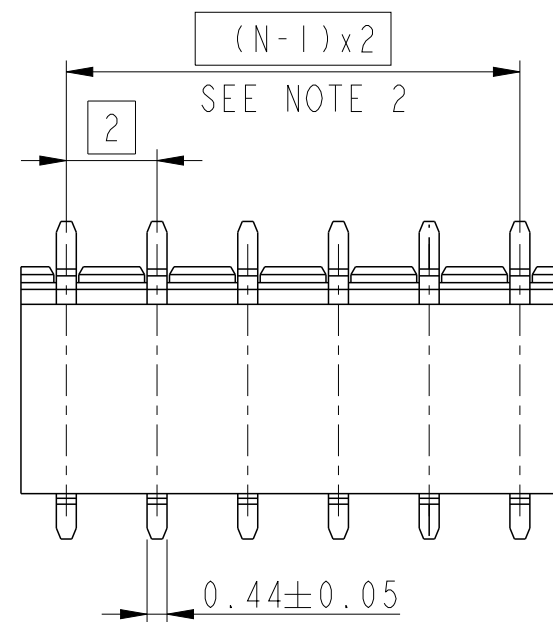
NOTES :

1 - MATERIAL
 HOUSING : HIGH TEMPERATURE GLASS FILLED FLAME
 RETARDANT PER UL 94 V-0
 TERMINAL: COPPER ALLOY

2- TO DETERMINE DIMENSIONS :
 N = NUMBER OF POSITIONS PER ROW
 EXAMPLE : 8 POS N x 2 = 16mm
 UP TO N = 24 TOLERANCE : 0
 -0.10
 FROM N = 26 TOLERANCE : 0.05
 -0.10

3 - R_oHS COMPATIBLE PRODUCT SPECIFICATIONS
 a - PLATING :
 "LF" MEANS THE PRODUCT IS LEAD-FREE, 2 μm MINIMUM MATTE
 TIN OVER 1.27 μm MINIMUM NICKEL UNDERPLATE
 b - MANUFACTURING PROCESS COMPATIBILITY
 THE HOUSING WILL WITHSTAND EXPOSURE TO 260°C PEAK
 TEMPERATURE FOR 30 SECONDS MAX IN A CONVECTION, INFRA-RED
 OR VAPOR PHASE OR REFLOW OVEN

c - LABELLING :
 MEETS PACKAGING SPECS AS PER GS-14-920
 d - LEGAL STATEMENT : SEE GS-47-0004



PRELIMINARY

spec ref	GS-12-1326	dr	Cyril Jeune	2014/12/02	projection	mm	size	A3	scale	6:1	
tolerance std	ISO 406 ISO 1101	eng	Cyril Jeune	2015/11/18			ecn no	-	rel level	Preliminary	
TOLERANCES UNLESS OTHERWISE SPECIFIED		chr	-	-							
surface	linear	appr	-	-	product family	-	rel level	Preliminary			
ISO 1302	angular	0.X	±		MINITEK RECEPTACLE 2MM		dwg no	10131933		rev	2
		0.XX	±		ASSEMBLY HCC DR SMT						
		0.XXX	±		www.fci.com		cat. no.	-	Product - Customer Drw		sheet 1 of 1
		0°	±°								



Copyright FCI.