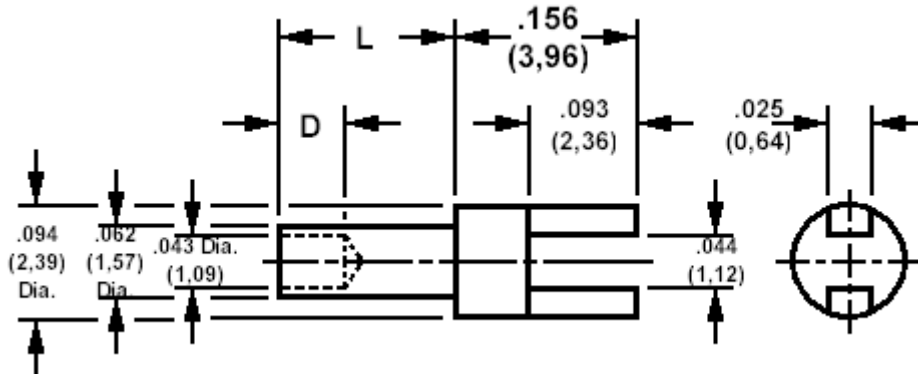


140-1385 Solder terminal, slotted

Recommended mounting hole .067 (1,70), #51 drill



How to order code

140-1385-XX-YY-00

Basic Part No XX = L dimension, YY = Plating Finish

| DIMENSIONS (XX) | | | | |
|-----------------|-----|-------------|-----------------|-------------|
| Basic Part No | | L | Board Thickness | D |
| 140-1385 | -11 | .025 (0,64) | .016 (0,40) | .040 (1,02) |
| | -01 | .045 (1,14) | .031 (0,79) | .040 (1,02) |
| | -02 | .094 (2,39) | .062 (1,59) | .062 (1,57) |
| | -03 | .125 (3,18) | .094 (2,38) | .062 (1,57) |
| | -04 | .156 (3,96) | .125 (3,18) | .062 (1,57) |

| MATERIALS | | | |
|-----------|----------|-------------|----------------|
| Component | Material | Finish (YY) | |
| | | -01 | -05 |
| Terminal | Brass | Silver | Electro Solder |

| SWAGE TOOLING | |
|-----------------------------|---|
| Recommended Swaging Tools:- | |
| Anvil | 435-6412-01-00-00 |
| Roll punch | 435-6611-01-00-00 |
| Flare Punch | 435-6692-01-00-00 (for -02 through -04) |
| Flare Punch | 435-6657-01-00-00 (for -11 and -01) |