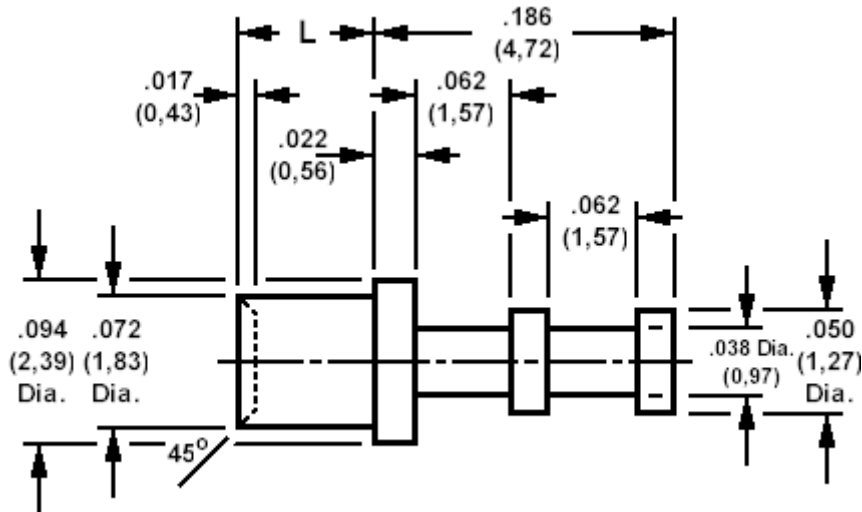


## 160-2043 Solder terminal, turreted,

Recommended mounting hole .076 (1,93), #48 drill



### How to order code

**160-2043-XX-YY-00**

Basic Part No XX = L dimension, YY = Plating Finish

| DIMENSIONS (XX) |      |             |                 |
|-----------------|------|-------------|-----------------|
| Basic Part No   | (XX) | L           | Board Thickness |
| 160-2043        | -01  | .051 (1,29) | .031 (0,79)     |
|                 | -02  | .082 (2,08) | .062 (1,59)     |
|                 | -03  | .113 (2,87) | .094 (2,38)     |
|                 | -04  | .145 (3,68) | .125 (3,18)     |

| MATERIALS |          |             |                |
|-----------|----------|-------------|----------------|
| Component | Material | Finish (YY) |                |
| Terminal  | Brass    | -01         | -05            |
|           |          | Silver      | Electro Solder |

| SWAGE TOOLING               |                   |
|-----------------------------|-------------------|
| Recommended Swaging Tools:- |                   |
| Anvil                       | 435-6420-01-00-00 |
| Roll punch                  | 435-6617-01-00-00 |