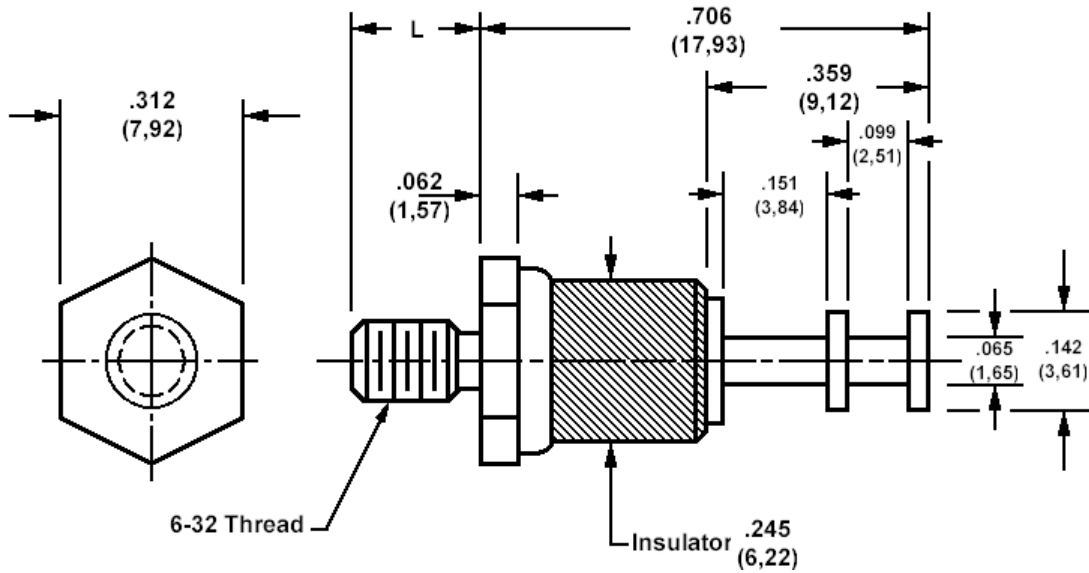


570-1994 Insulated solder terminal, Turreted



How to order code

570-1994-XX-YY-00

Basic Part No (XX = thread length, YY = plating finish. See tables for options)

| Basic Part No. | XX | L |
|----------------|-----|-------------|
| 570-1994 | -01 | .250 (6,35) |
| | -02 | .375 (9,53) |

| Component | Material | Finish (YY) | |
|-----------|----------|-------------|----------------|
| | | -01 | -05 |
| Terminal | Brass | Silver | Electro Solder |
| Stud | Brass | Nickel | Nickel |
| Insulator | Ceramic | | |

| Additional Specifications | |
|--|------|
| Dielectric Withstanding Voltage (VRMS) | 4000 |