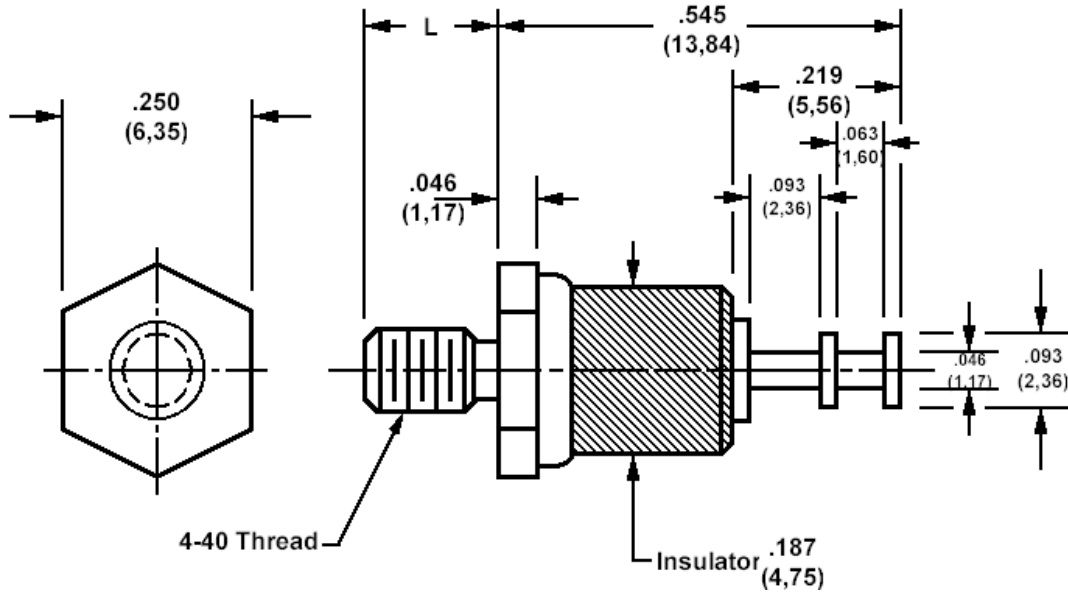


570-2045 Insulated solder terminal, Turreted



How to order code
570-2045-XX-YY-00

Basic Part No (XX = thread length, YY = plating finish. See tables for options)

Basic Part No.	XX	L
570-2045	-01	.250 (6,35)
	-02	.375 (9,53)

Component	Material	Finish (YY)	
		-01	-05
Terminal	Brass	Silver	Electro Solder
Stud	Brass	Cadmium (plus chromate)	Cadmium (plus chromate)
Insulator	Ceramic		

Additional Specifications	
Dielectric Withstanding Voltage (VRMS)	2500