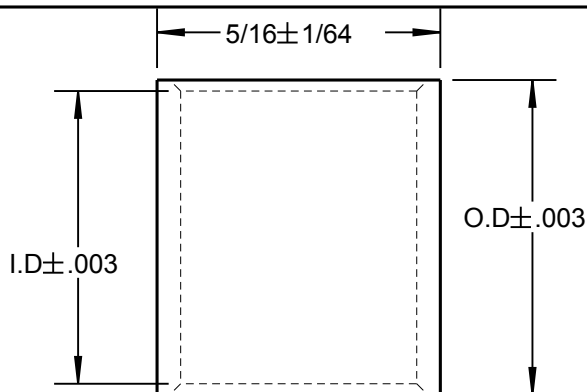


T&B Shield-Kon



MATERIAL: COML.BRONZE PER ASTM B36 (UNS C22000)
* ASTM B140 ALLOY #B.

FINISH: ELECTRO TIN PLATE PER MIL-T-10727A
TYPE1 EQUIVALENT TO ASTM B545 CLASS A.

NOTES:

1. PARTS ARE FREE OF BURRS & SHARP EDGES.
2. REFER TO BS-53097 FOR WT540 COMBINATION DIES.
3. TIN PLATED PARTS SHOULD NOT BE EXPOSED TO TEMPERATURES ABOVE 150° C.

INNER SLEEVE

ALL DIMENSIONS ARE APPROXIMATE, FOR REFERENCE ONLY.

** FOR NICKEL PLATED TERMINALS ADD NP SUFFIX TO CATALOG NUMBER.

COLOR CODE	CAT. NO.**	I.D.	O.D.
TIN	GSB046	.046	.070
YELLOW	GSB058	.058	.083
RED	GSB063	.063	.088
GREEN	GSB071	.071	.096
BLUE	GSB080	.080	.1035
ORANGE	GSB090	.090	.1135
PURPLE	GSB096	.096	.119
YELLOW	GSB101	.101	.124
RED	GSB109	.109	.131
GREEN	GSB124	.124	.145
TIN	GSB128	.128	.152
ORANGE	GSB134	.134	.156
BLUE	GSB149	.149	.179
RED	GSB156	.156	.193
TIN	GSB165	.165	.194
GREEN	GSB175	.175	.215
YELLOW	GSB187	.187	.227
BLUE	GSB194	.194	.226
ORANGE	GSB205	.205	.245
TIN	GSB219	.219	.250
YELLOW	GSB225	.225	.256
RED	GSB232	.232	.263
GREEN	GSB250	.250	.281
BLUE	*GSB261	.261	.297
TIN	*GSB266	.266	.297
ORANGE	*GSB275	.275	.306
YELLOW	*GSB281	.281	.331
TIN	*GSB287	.287	.327
RED	GSB297	.297	.335
PURPLE	GSB312	.312	.362
BLUE	*GSB375	.375	.406
TIN	GSB115	.115	.146
ORANGE	GSB348	.348	.400

GENERAL NOTES

1. ALL DIMENSIONS ARE FOR REFERENCE ONLY.
2. DIMENSIONS IN BRACKETS [] ARE IN METRIC UNITS.

www.tnb.com

Thomas & Betts
A Member of the ABB Group

DESCRIPTION:

SHIELD-KON CONNECTORS

REVISIONS

- | | |
|---|---|
| 2 | SEE ERN (2018110)
FOR APPROVAL SIGNATURES
& RELEASE DATE.
PROJECT NO: TM400023 |
|---|---|

ORIGINAL PROJECT NO / (ERN NO)

TM401328 / (2006091)

SHEET NO:

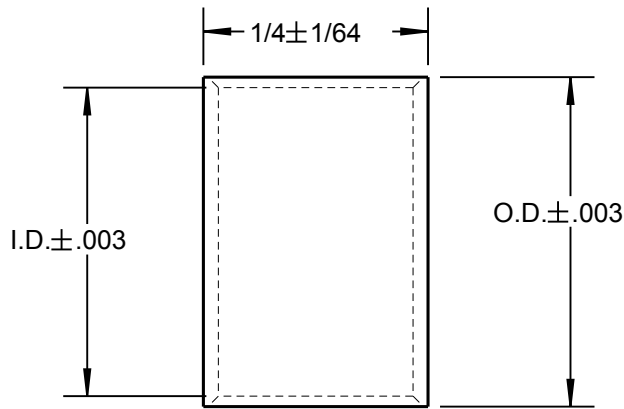
1 OF 2

REV. NO:

2

DRAWING NO:

WSD-000206



OUTER SLEEVE

ALL DIMENSIONS ARE APPROXIMATE, FOR REFERENCE ONLY.

** FOR NICKEL PLATED TERMINALS ADD NP SUFFIX TO CATALOG NUMBER.

COLOR CODE	CAT. NO.**	I.D.	O.D.	HAND TOOL	INTERCHANGEABLE DIES USED WITH	
					WT440	WT540
TIN	GSC101	.101	.124	WT419	4419	----
BLUE	GSC128	.128	.152	WT400	4400	----
PURPLE	GSC149	.149	.179	WT401	4401	----
YELLOW	GSC156	.156	.193	WT402	4402	----
BLUE	GSC175	.175	.215	WT403	4403	----
ORANGE	GSC187	.187	.227	WT406	4406	----
RED	GSC194	.194	.226	WT406	4406	----
TIN	GSC199	.199	.235	WT406	4406	----
YELLOW	GSC205	.205	.245	WT408	4408	----
GREEN	GSC219	.219	.250	WT408	4408	----
PURPLE	GSC225	.225	.256	WT409	4409	----
ORANGE	GSC232	.232	.263	WT410	4410	----
YELLOW	GSC261	.261	.297	WT411	4411	----
TIN	GSC275	.275	.306	WT412	4412	----
PURPLE	GSC281	.281	.331	WT414	4414	----
BLUE	GSC287	.287	.327	WT414	4414	----
GREEN	GSC297	.297	.335	WT414	4414	----
YELLOW	GSC312	.312	.362	WT415	4415	----
TIN	GSC327	.327	.372	WT416	4416	----
ORANGE	GSC348	.348	.393	WT417	4417	----
PURPLE	GSC359	.359	.399	----	----	5450
YELLOW	GSC375	.375	.406	----	----	5451
RED	GSC405	.405	.453	----	----	5452
BLUE	GSC415	.415	.463	----	----	5452
TIN	*GSC460	.460	.510	----	----	5456
GREEN	*GSC500	.500	.550	----	----	5457
TIN	*GSC425	.425	.475	----	----	5454
TIN	GSC071T	.071	.096	----	----	----
BLUE	GSC071B	.071	.096	----	----	----

www.tnb.com

Thomas & Betts
A Member of the ABB Group

DESCRIPTION:

SHIELD-KON CONNECTORS

SHEET NO:

2 OF 2

REV. NO:

2

DRAWING NO:

WSD-000206