

4

3

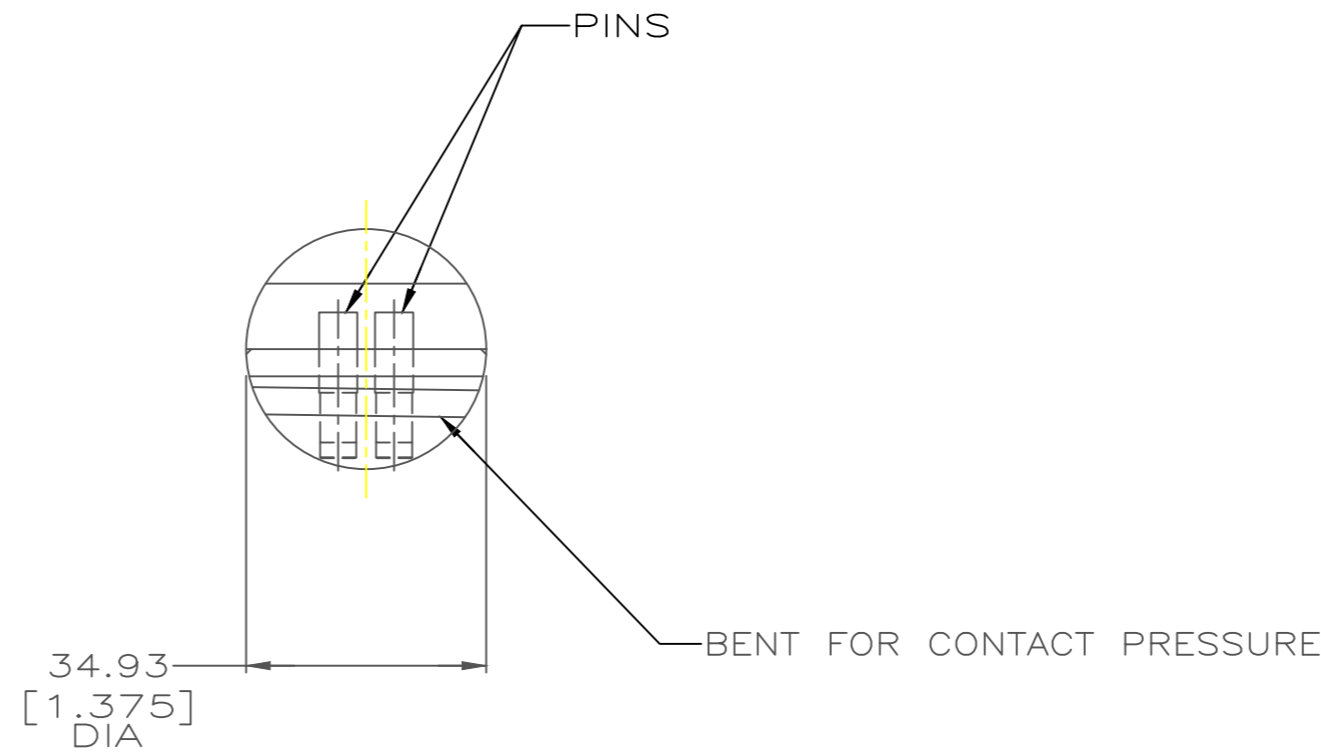
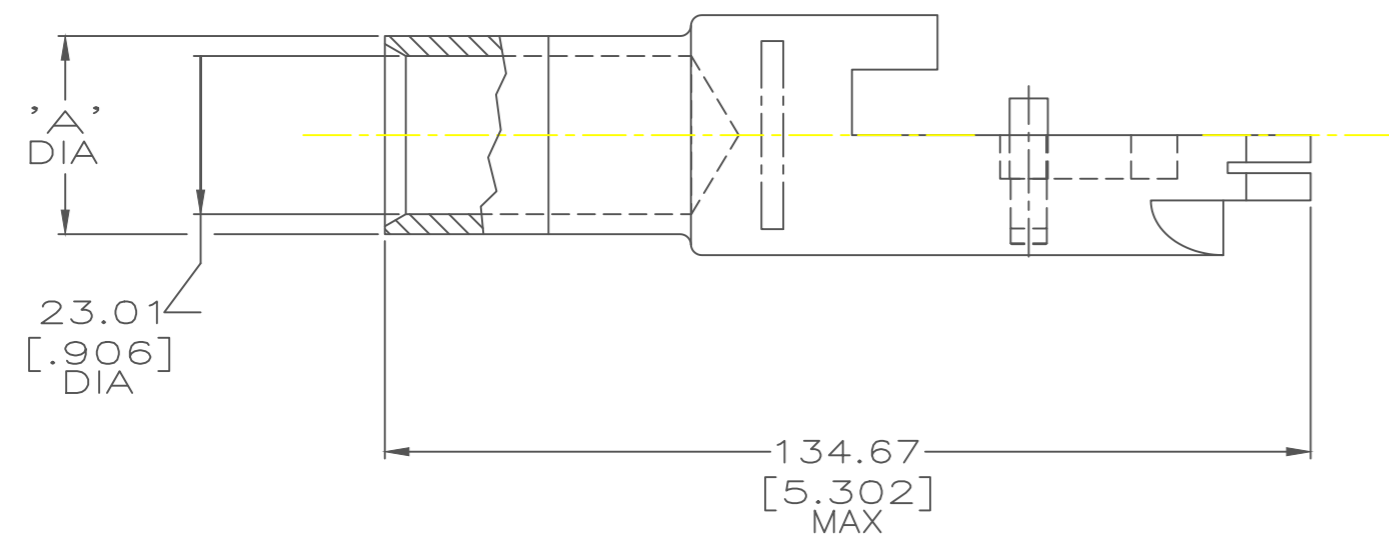
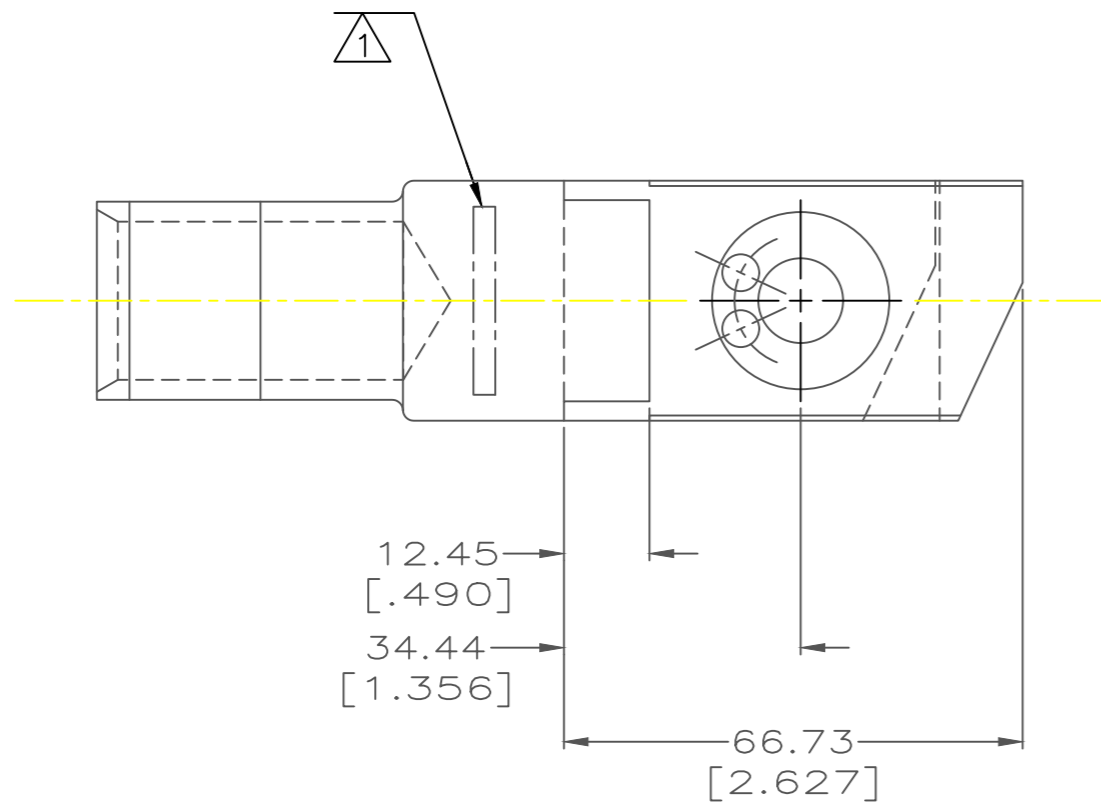
2

1

THIS DRAWING IS UNPUBLISHED. RELEASED FOR PUBLICATION  
 © COPYRIGHT 19 BY AMP INCORPORATED. ALL RIGHTS RESERVED.

LOC	DIST	REVISIONS					
G	86	P	LTR	DESCRIPTION	DATE	DWN	APVD
		D		Add N in the stamp note 1	11OCT2017	LG	MV

①  $\Delta$  STAMP AMP 400 MCM N 1100/24 APPROX AS SHOWN



30.48 [1.200]	53434-2
28.83 [1.135]	53434-1
'A'	AMP PART NUMBER

THIS DRAWING IS A CONTROLLED DOCUMENT FOR AMP INCORPORATED. IF IT IS SUBJECT TO CHANGE AND THE CONTROLLING ENGINEERING ORGANIZATION SHOULD BE CONTACTED FOR THE LATEST REVISION.		DWN	DK SCHRUM	14JUN96	<b>AMP</b> AMP Incorporated Harrisburg, PA 17105-3608
DIMENSIONS: mm[INCHES]		CHK	WJ VOCKROTH	25JUN96	
TOLERANCES UNLESS OTHERWISE SPECIFIED: 0 PLC ±- 1 PLC ±- 2 PLC ±0.20[.008] 3 PLC ±- 4 PLC ±- ANGLES ±-		APVD	JL MECKLEY	25JUN96	NAME
MATERIAL BODY & PINS BRASS PER QQ-B-626		PRODUCT SPEC 108-13014		TERMINAL ASSEMBLY, QUICK-DISCONNECT, AMPOWER™, WIRE SIZE: 400 MCM	
FINISH SILVER PL 0.00127[.000050] MIN THK PER QQ-S-365		APPLICATION SPEC	SIZE		CAGE CODE
CUSTOMER DRAWING		A2		00779	DRAWING NO G=53434
		SCALE		1:1	SHEET 1 OF 1 REV D

53434

A