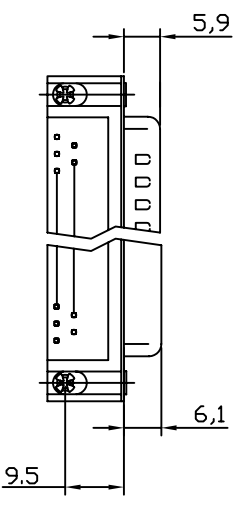
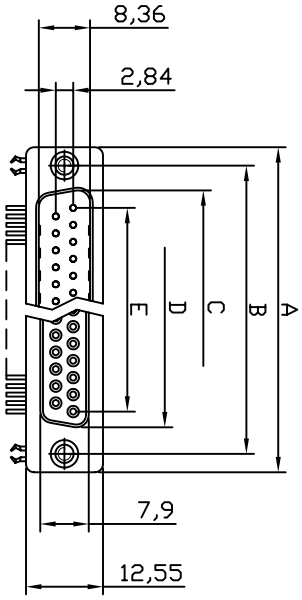
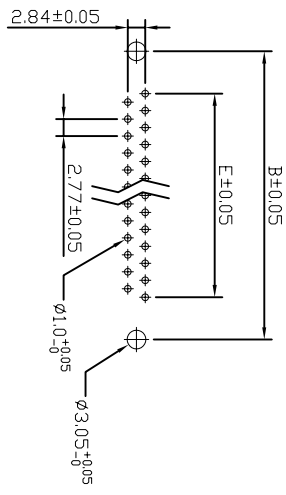


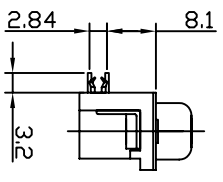
This document is the property of Amphenol Corporation and is delivered on the express condition that it is not to be distributed, reproduced or used, in whole or in part, without the prior consent of Amphenol Corporation. Amphenol Corporation will not be held liable for any errors or omissions in this document or to use any information in this document.



Plug Socket



RECOMMENDED PCB LAYOUT
(TOLERANCE +/- 0.03)



Dimensions	A	B	C	D	E
9	30.81	24.99	16.92	16.33	11.08
15	39.14	33.32	25.50	24.66	19.39
25	53.04	47.04	38.96	38.38	33.24
37	69.32	63.50	55.42	54.84	49.86



REVISIONS		DATE	APPROVED
B	SMI EON	24/01/07	

D-SUB TECHNICAL DATA

Product Specification

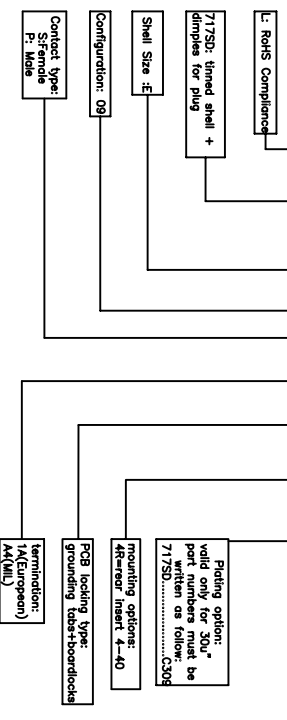
Material and Finish
 Insulator: PBT + Glass-filled thermoplastic, UL-94V-0 rated.
 Male Contact: Brass per QQ-B-626, selected gold over full tin.
 Female Contact: Phosphor Bronze per QQ-B-750, selected gold over full tin.
 Metal Shell: Carbon steel per ASTM-A-109, tin over nickel.
 Boardlock: Copper alloy, tin over nickel.
 Screwlock: Brass per QQ-B-626, tin over nickel.

Electrical
 Contact Resistance: 25 milliohms max. At 1 ampere Dc.
 Insulation Resistance: 5000 megohms at 500 VDC.
 Dielectric Withstanding Voltage: 1000 VAC/rms 60Hz for one minute.
 Current Rating: 1 amperes per contact.
 Voltage Rating: 250 VAC/rms 60Hz.

Environmental
 Operating Temperature: -55C to +105C.
 Humidity: 24hours at 40C/95%R.H.

PRODUCT CODE

L717SD E 09 P A4 CH 4R C309



UNLESS OTHERWISE SPECIFIED	APPROVAL	DATE
TOLERANCES U.S. METRIC	DRAWN LBN/TJH/6/07	
.X +/-.050	CHECKED ERIC M/6/07	
.XX +/-.030		
.XXX +/-.020		
ANGLES +/-		
FINISHES +/-		
FOR MATERIALS AND FINISHES REMOVE SHARP EDGES		
DIMENSIONS IN INCHES		
ANGLE OF PROJECTION		
SCALE NONE		
SHEET 1 OF 1		

Amphenol

SIZE	DRAWING NO.	REV.
A4	C L717SD E09 P A4 CH 4R C309	B

A

4

3

2

1

1

A