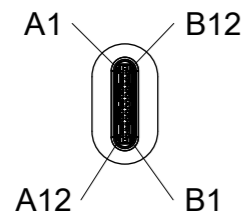
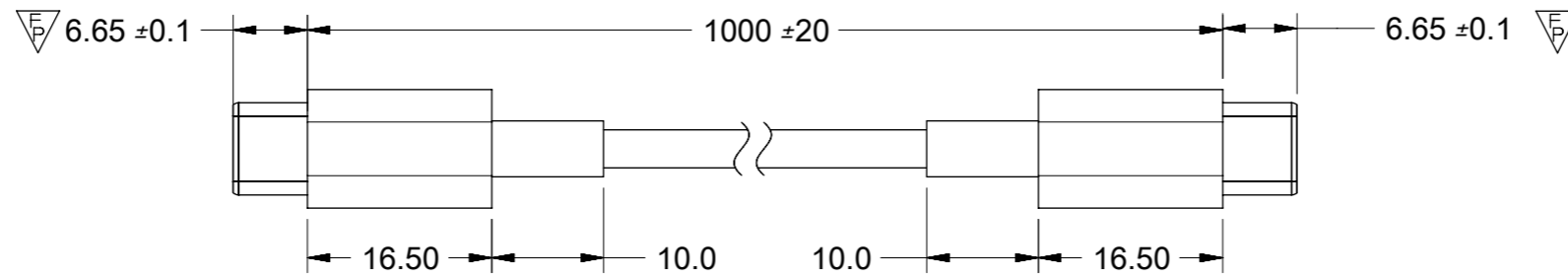


REVISIONS				
EC NO	DATE	REV	DESCRIPTION	CHANGER
NA	2017/12/20	A	INITIAL RELEASE	LUCY
NA	2017/12/25	A1	NO ANY CHANGE, RELEASED AGAIN	LUCY

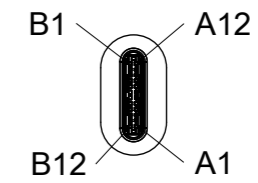
P1



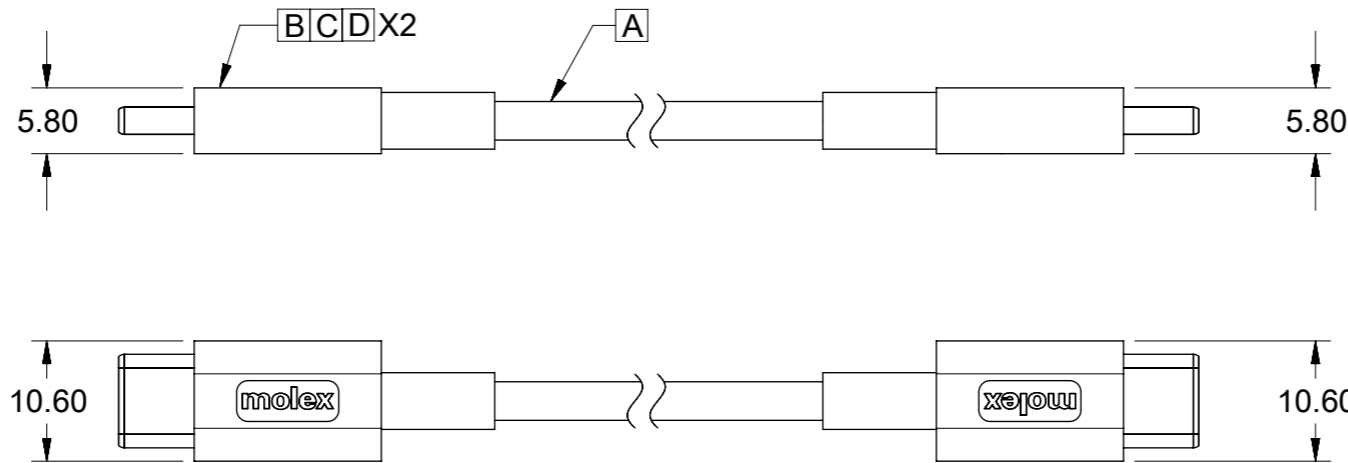
TYPE C



P2



TYPE C



D	Right metal shell	2
C	Left metal shell	2
B	Type C plug Au 30u" 22pin+PCBA 2.0	2
A	1Px30AWG+1Cx24AWG+1Cx32AWG,shielded,TPE,White,OD3.40mm,UL21104	AR
ITEM	DESCRIPTION	QTY.

PIN ASSIGNMENTS				
Type C(P1)	SIGNAL NAME	WIRE COLOR	SIGNAL NAME	Type C(P2)
A1,B1,A12,B12	GND	DRAIN	GND	A1,B1,A12,B12
A4,B4,A9,B9	VBUS	RED	VBUS	A4,B4,A9,B9
A5	CC	BLUE	CC	A5
B5	VCONN	-	VCONN	B5
A6	Dp1	GREEN	Dp1	A6
A7	Dn1	WHITE	Dn1	A7
SHELL	SHIELD	BRAID	SHIELD	SHELL

QUALITY SYMBOLS FA = 0 FE = 0 FP = 2 ▼ = 0 C = 0 ⊗ = 0 ■ = 0 ▽ = 0	THIS DRAWING CONTAINS INFORMATION THAT IS PROPRIETARY TO MOLEX ELECTRONIC TECHNOLOGIES, LLC AND SHOULD NOT BE USED WITHOUT WRITTEN PERMISSION		GENERAL TOLERANCES (UNLESS SPECIFIED) ANGULAR TOL ± 3.0 ° 4 PLACES ± 3 PLACES ± 2 PLACES ± 0.25 1 PLACE ± 0.5 0 PLACES ±	DIMENSION UNITS: mm SCALE: 1.5:1 DRWN BY: XJGU001 DATE: 2016/08/18 CHK'D BY: LLI205 DATE: 2017/06/26 APPR BY: FNIE DATE: 2017/12/25	 USB 2.0 TYPE C TO C WHITE CABLE, L=1M,3A PRODUCT CUSTOMER DRAWING SERIES: 201241 MATERIAL NUMBER: 687980010 CUSTOMER: GENERAL MARKET DOCUMENT NUMBER: 2012410154 DOC TYPE: PSD DOC PART: 000 SHEET NUMBER: 1 OF 2
	EC NO: 169915 DRWN: ZZXIAN CHK'D: LLI205 REV APPR: FNIE	EC NO: A1 REV:	DRAFT WHERE APPLICABLE MUST REMAIN WITHIN DIMENSIONS	DRAWING SIZE: A3 THIRD ANGLE PROJECTION	
	RELEASE STATUS: P1 RELEASE DATE: 25.12.2017 07:13:20			DATE: 2015/12/14	
	FORMAT: master-b-prod-A3 REVISION: 0				

NOTE:

1. OVERMOLDING SPECIFICATION:

- 1.1 INNER MOLDING: PP RESIN
- 1.2 SR MOLDING: TPE WHITE RESIN
- 1.3 OUTER MOLDING: TPE WHITE RESIN

2. APPLICATION CONDITION

- 2.1 WORKING TEMPERATURE: -10°--- +50°
- 2.2 STORAGE TEMPERATURE: -20°--- +60°

3. MECHANICAL PERFORMACNE

3.1.3.1. BENDING TEST:200G, +/-90°, 12~14CYCLES/MINUTES, R=25.4MM, HORIZONTAL FOR 500 CYCLES AND VERTICAL FOR 500 CYCLES, NO LESS THAN 1000 times/cycles*3 CYCLES=3000 TIMES

3.2. CABLE SHOULD WITHSTAND A PULL FORCE 40N FOR ONE MINUTE WITHOUT VISIBLE TERMINATION DAMAGE.PER EIA 364-38 METHOD A

4. ELECTRICAL PERFORMACNE

- 4.1 100% OPEN AND SHORT TEST
- 4.2 HIGH FREQUENCY ELECTRICAL PERFORMANCE MEET USB TYPE C - TYPE C, USB 2.0 REQUIREMENT
- 4.3 CURRENT RATING:3A, VOLTAGE DROP SHALL BE 250mV FOR GND AND 500mV FOR VBUS.

5. THIS PRODUCT MUST MEET EU RoHS

THIS DRAWING CONTAINS INFORMATION THAT IS PROPRIETARY TO MOLEX ELECTRONIC TECHNOLOGIES, LLC AND SHOULD NOT BE USED WITHOUT WRITTEN PERMISSION															
QUALITY SYMBOLS 	EC NO: 169915 DRWN: ZZXIAN CHK'D: LL1205 APPR: FNIE	GENERAL TOLERANCES (UNLESS SPECIFIED) ANGULAR TOL ± 3.0 °		DIMENSION UNITS	SCALE										
		4 PLACES ±		mm	1:1										
		3 PLACES ±		DRWN BY	DATE										
		2 PLACES ± 0.25		XJGU001 2016/08/18		CHK'D BY		DATE		USB 2.0 TYPE C TO C WHITE CABLE, L=1M,3A					
		1 PLACE ± 0.5		LL1205 2017/06/26		APPR BY		DATE							
		0 PLACES ±		FNIE 2017/12/25		PRODUCT CUSTOMER DRAWING									
		DRAFT WHERE APPLICABLE MUST REMAIN WITHIN DIMENSIONS		DRAWING SIZE	THIRD ANGLE PROJECTION	SERIES	MATERIAL NUMBER	CUSTOMER							
		A1		A3		201241	687980010	GENERAL MARKET							
						DOCUMENT NUMBER		DOC TYPE	DOC PART	SHEET NUMBER					
						2012410154		PSD	000	2 OF 2					