

DO NOT
SCALE FROM
THIS PRINT

DESIGNED & DIMENSIONED
IN MILLIMETERS[INCHES]

B DCA-RPBE-XX-01-P

No OF PORTS
-01: 1 PORT (SEE SHT 1)
-02: 2 PORT (SEE SHT 2)

OPTION 2 **B**
-P: PUSH ON/
NON-LATCHING
OPTION
-01: W/STRAP

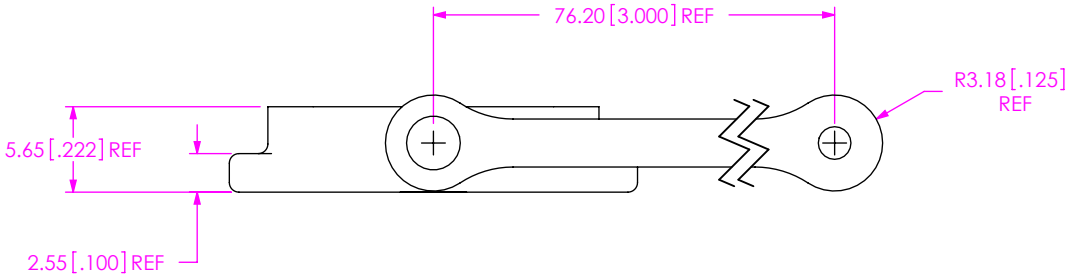
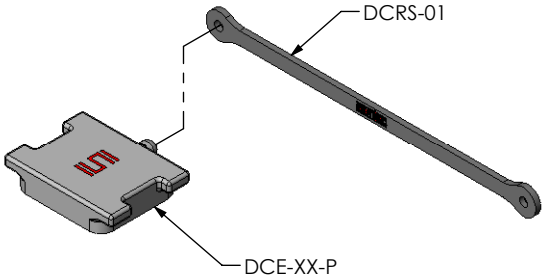
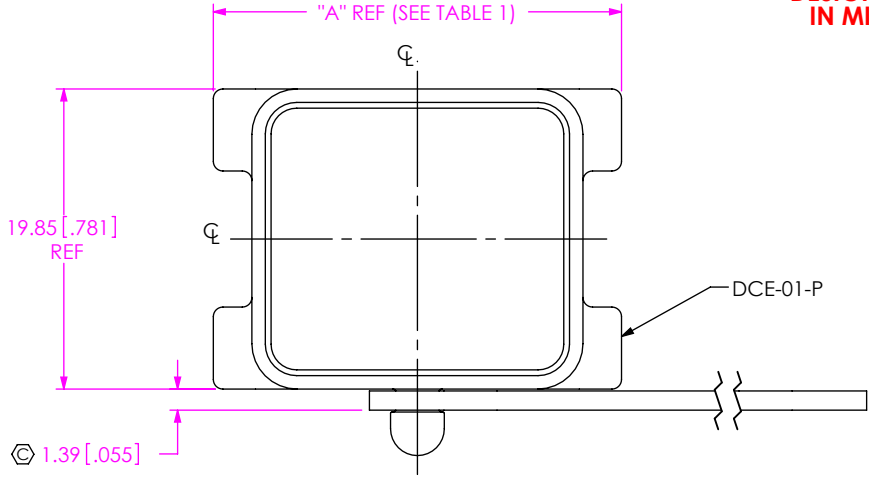


TABLE 1	
PORTS	"A"
-01	27.00 [1.063]
-02	44.70 [1.760]

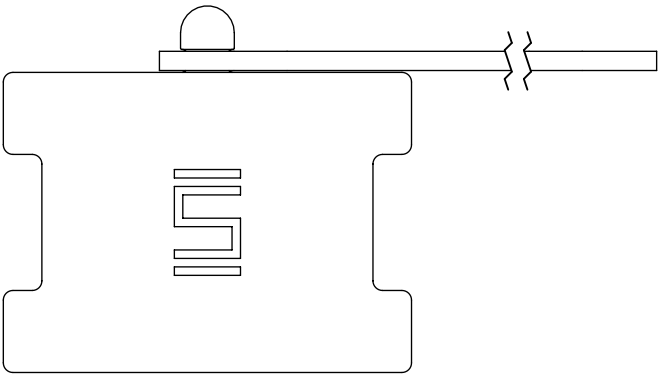


FIG. 1
B DCA-RPBE-0T-0T-P SHOWN

- NOTES:
1. Ⓢ REPRESENTS A CRITICAL DIMENSION.
 2. COMPONENTS OF SUB-ASSEMBLY TO BE INSPECTED USING COMPONENT PRINTS.
 3. MINIMUM RETENTION: 4.4N[1.0 LB.].
 4. PARTS TO BE BULK PACKAGED.

UNLESS OTHERWISE SPECIFIED,
DIMENSIONS ARE IN MILLIMETERS.
TOLERANCES ARE:
DECIMALS ANGLES
X.X: ±0.3 [.01] 2°
X.XX: ±0.13 [.005]
X.XXX: ±0.051 [.0020]

PROPRIETARY NOTE
THIS DOCUMENT CONTAINS INFORMATION
CONFIDENTIAL AND PROPRIETARY TO
SAMTEC, INC. AND SHALL NOT BE REPRODUCED
OR TRANSFERRED TO OTHER DOCUMENTS OR
DISCLOSED TO OTHERS OR USED FOR ANY
PURPOSE OTHER THAN THAT WHICH IT WAS
OBTAINED WITHOUT THE EXPRESSED WRITTEN
CONSENT OF SAMTEC, INC.

MATERIAL: DO NOT SCALE DRAWING
CAP: PA66
STRAP: NATURAL RUBBER

SHEET SCALE: 2:1

samtec

520 PARK EAST BLVD., NEW ALBANY, IN 47150
PHONE: 812-944-6733 FAX: 812-948-5047
e-Mail: info@SAMTEC.com code 55322

DESCRIPTION:
B DUST CAP ASM FOR RPBE/SPE

DWG. NO. DCA-RPBE-XX-01-P

BY: ROY LUO 9/21/2010 SHEET 1 OF 2

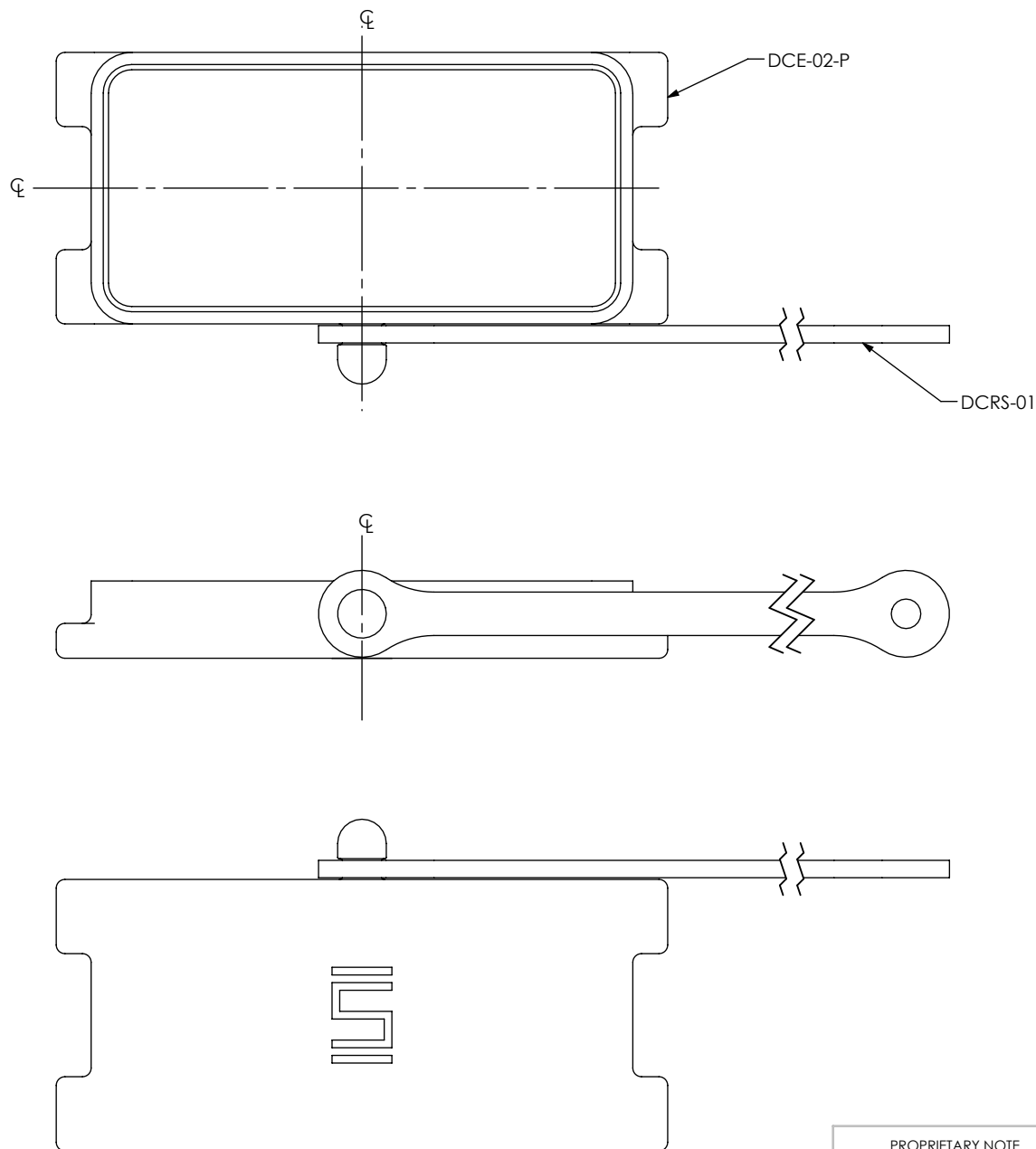


FIG. 2
B DCA-RPBE-02-01-P SHOWN
 (SAME AS FIG. 1, DIFFERENT AS SHOWN)

PROPRIETARY NOTE
 THIS DOCUMENT CONTAINS INFORMATION
 CONFIDENTIAL AND PROPRIETARY TO
 SAMTEC, INC. AND SHALL NOT BE REPRODUCED
 OR TRANSFERRED TO OTHER DOCUMENTS OR
 DISCLOSED TO OTHERS OR USED FOR ANY
 PURPOSE OTHER THAN THAT WHICH IT WAS
 OBTAINED WITHOUT THE EXPRESSED WRITTEN
 CONSENT OF SAMTEC, INC.

DO NOT SCALE DRAWING

SHEET SCALE: 2:1

samtec

520 PARK EAST BLVD, NEW ALBANY, IN 47150
 PHONE: 812-944-6733 FAX: 812-948-5047
 e-Mail: info@SAMTEC.com code 55322

DESCRIPTION:
 DUST CAP ASM FOR RPBE/SPE

DWG. NO.
 DCA-RPBE-XX-01-P

BY: ROY LUO 9/21/2010 SHEET 2 OF 2