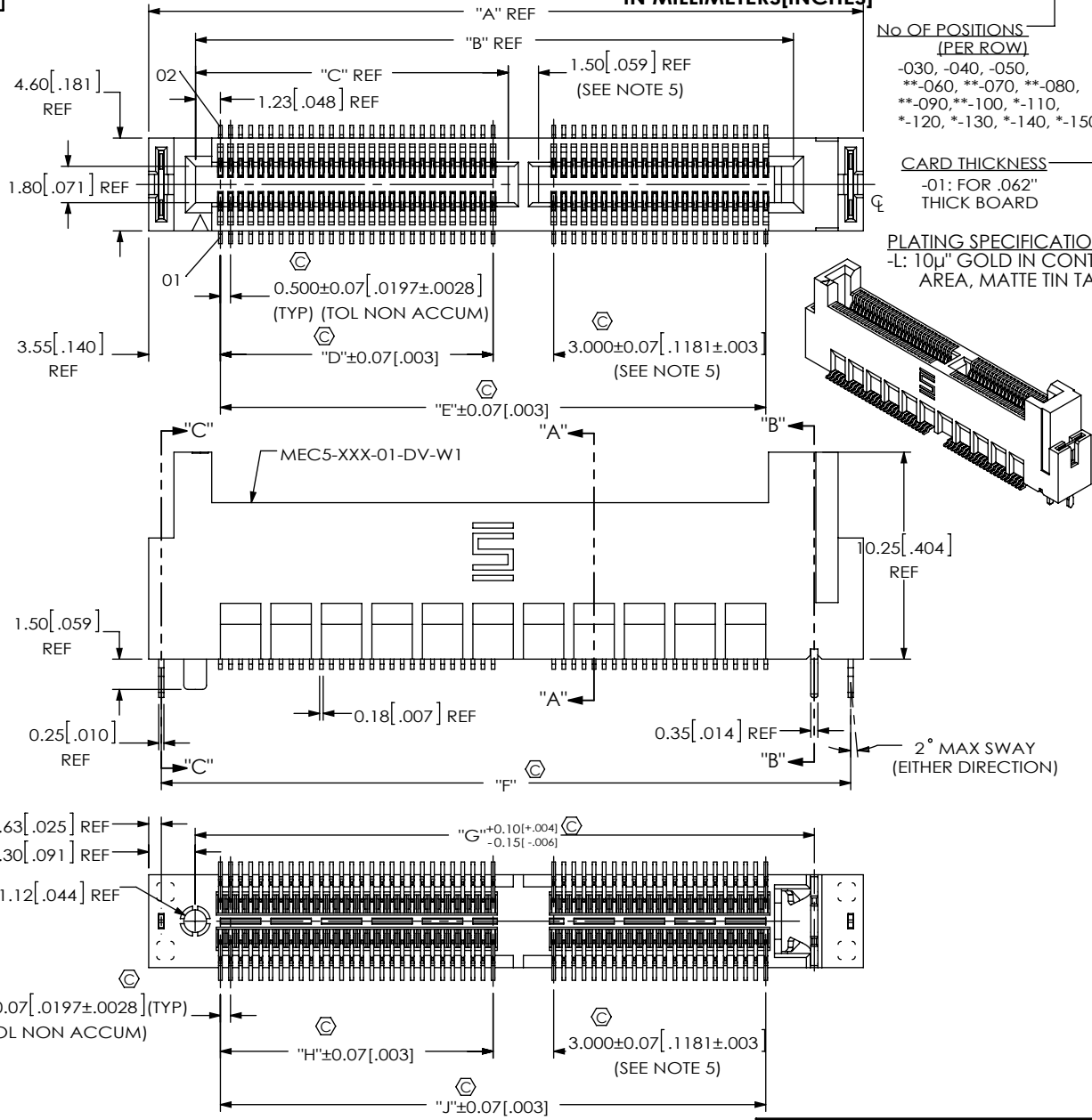


DO NOT SCALE FROM THIS PRINT

DESIGNED & DIMENSIONED IN MILLIMETERS [INCHES]

MEC5-XXX-XX-X-DV-XX-K-XX



NO OF POSITIONS (PER ROW)
 -030, -040, -050,
 **-060, **-070, **-080,
 **-090, **-100, *-110,
 *-120, *-130, *-140, *-150

CARD THICKNESS
 -01: FOR .062" THICK BOARD

PLATING SPECIFICATION
 -L: 10µ" GOLD IN CONTACT AREA, MATTE TIN TAIL

PACKAGING:
 -TR: TAPE & REEL (REQUIRED FOR POS: 030~100) (LEAVE BANK FOR TRAY PACKAGING, ONLY AVAILABLE FOR POS 110~150.) (SEE NOTE 3 & 6)

-K: POLYIMIDE FILM PAD (SEE FIG 2, SHT 2)

OPTION:
 -W1: WELD TAB THROUGH HOLE (SEE FIG 1) (REQUIRED)

ROW SPECIFICATION
 -DV: DOUBLE VERTICAL

(* = NOT TOOLED)
 (** = NOT RELEASED)

TABLE 1

NO OF POS	"A"	"B"	"C"
-030	22.88 [0.901]	17.10 [0.673]	N/A
-040	27.88 [1.098]	22.10 [0.870]	N/A
-050	35.38 [1.393]	29.60 [1.165]	15.48 [.609]
**060	40.38 [1.590]	34.60 [1.362]	17.98 [.708]
**070	45.38 [1.787]	39.60 [1.559]	20.48 [.806]
**080	50.38 [1.983]	44.60 [1.756]	22.98 [.905]
**090	55.38 [2.180]	49.60 [1.953]	25.48 [1.003]
**100	60.38 [2.377]	54.60 [2.150]	27.98 [1.102]

NO OF POS	"D"	"E"	"F"
-030	N/A	14.500 [0.5709]	21.63 [0.852]
-040	N/A	19.500 [0.7677]	26.63 [1.048]
-050	13.500 [.5315]	27.000 [1.0630]	34.13 [1.344]
**060	16.000 [.6299]	32.000 [1.2598]	39.13 [1.541]
**070	18.500 [.7283]	37.000 [1.4567]	44.13 [1.737]
**080	21.000 [.8268]	42.000 [1.6535]	49.13 [1.934]
**090	23.500 [.9252]	47.000 [1.8504]	54.13 [2.131]
**100	26.000 [1.0236]	52.000 [2.0472]	59.13 [2.328]

NO OF POS	"G"	"H"	"J"
-030	18.16 [0.715]	N/A	14.500 [0.5709]
-040	23.16 [0.912]	N/A	19.500 [0.7677]
-050	30.66 [1.207]	13.500 [.5315]	27.000 [1.0630]
**060	35.66 [1.404]	16.000 [.6299]	32.000 [1.2598]
**070	40.66 [1.601]	18.500 [.7283]	37.000 [1.4567]
**080	45.66 [1.798]	21.000 [.8268]	42.000 [1.6535]
**090	50.66 [1.994]	23.500 [.9252]	47.000 [1.8504]
**100	55.66 [2.191]	26.000 [1.0236]	52.000 [2.0472]

- NOTES:
- FIG 1**
 MEC5-050-01-X-DV-W1-K SHOWN
- ⊕ REPRESENTS A CRITICAL DIMENSION.
 - MINIMUM PUSHOUT FORCE: 0.5 LBS FOR C-400, WT-25; 1.0 LBS FOR C-403.
 - 030~100 POSITIONS PARTS TO BE PACKAGED IN TAPE & REEL, 110~150 POSITIONS PARTS TO BE PACKAGED IN TRAY.
 - MATING CARD MUST HAVE LEAD-IN. SEE SAMTEC FOOTPRINT FOR SPECIFICATIONS.
 - POLARIZATION RIB IS NOT PRESENT ON -030 & -040 POSITIONS.
 - FOR QUANTITIES UP TO 49 PCS., NO LEADER, TRAILER OR REEL WILL BE SUPPLIED. FOR QUANTITIES OF 50-124 PCS., NO LEADER OR TRAILER WILL BE SUPPLIED, SPLICES MAY BE PRESENT.

UNLESS OTHERWISE SPECIFIED, DIMENSIONS ARE IN MILLIMETERS. TOLERANCES ARE:

DECIMALS	ANGLES
X.X: ±0.3 [0.1]	2°
X.XX: ±0.10 [0.04]	
X.XXX: ±0.051 [0.020]	

PROPRIETARY NOTE
 * THIS DOCUMENT CONTAINS CONFIDENTIAL AND PROPRIETARY INFORMATION AND ALL DESIGN, MANUFACTURING, REPRODUCTION, USE, PATENT RIGHTS AND SALES RIGHTS ARE EXPRESSLY RESERVED BY SAMTEC, INC. THIS DOCUMENT SHALL NOT BE DISCLOSED, IN WHOLE OR PART, TO ANY UNAUTHORIZED PERSON OR ENTITY NOR REPRODUCED, TRANSFERRED OR INCORPORATED IN ANY OTHER PROJECT IN ANY MANNER WITHOUT THE EXPRESS WRITTEN CONSENT OF SAMTEC, INC.

MATERIAL: DO NOT SCALE DRAWING SHEET SCALE: 3:1
 INSULATOR: LCP, UL 94 V0, COLOR: BLACK
 CONTACT: Cu ALLOY
 WELD TAB: BRASS ALLOY

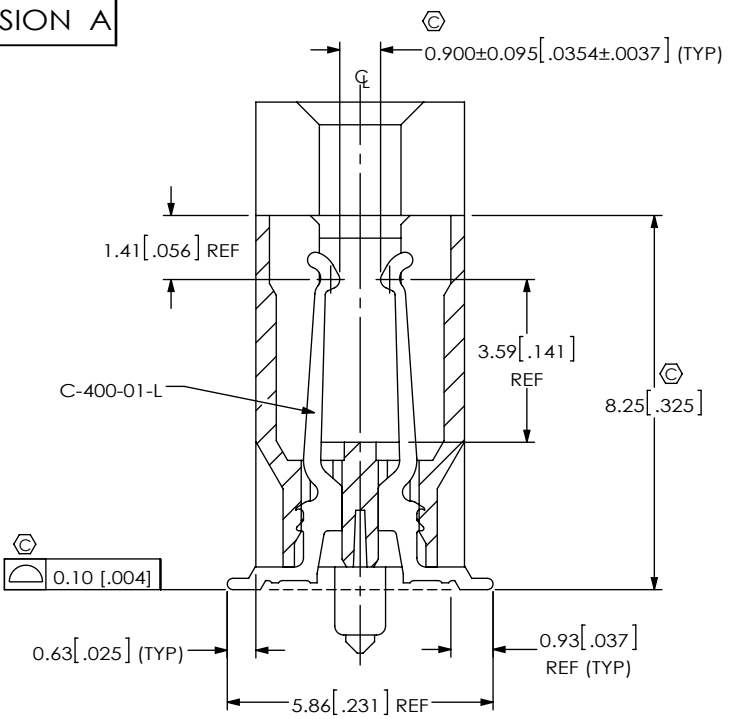


520 PARK EAST BLVD. NEW ALBANY, IN 47150
 PHONE: 812-944-6733 FAX: 812-948-5047
 e-Mail: info@SAMTEC.com code 55322

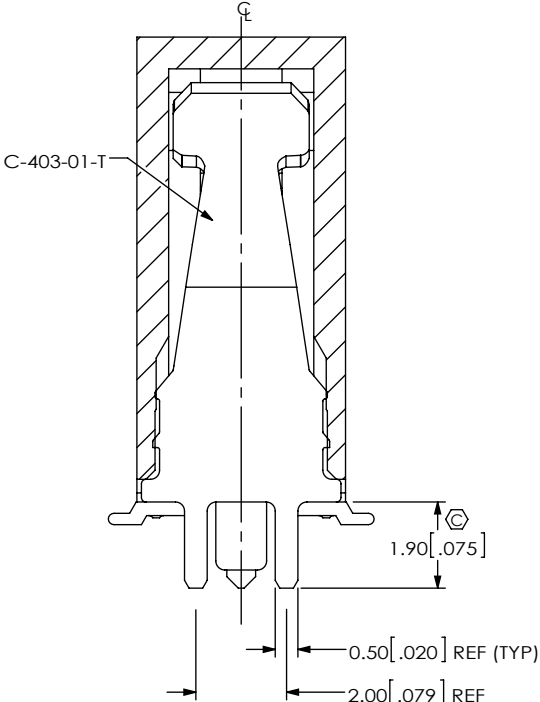
DESCRIPTION:
 0.5mm HIGH SPEED EDGE CARD ASSEMBLY
 DWG. NO.

MEC5-XXX-XX-X-DV-XX-K-XX

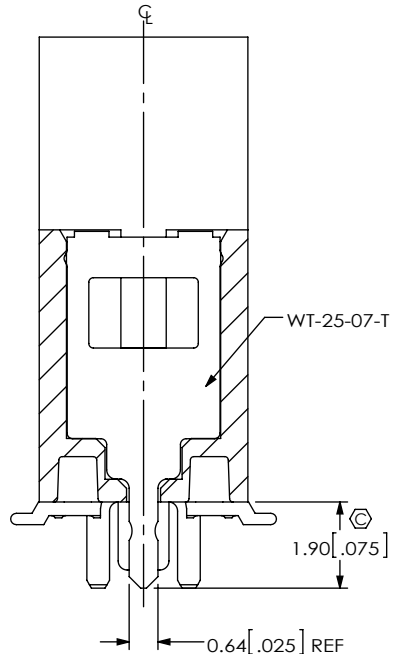
BY: JESSIE W 5/29/2015 SHEET 1 OF 3



SECTION "A"-"A"
SCALE 6 : 1



SECTION "B"-"B"
SCALE 6 : 1



SECTION "C"-"C"
SCALE 6 : 1

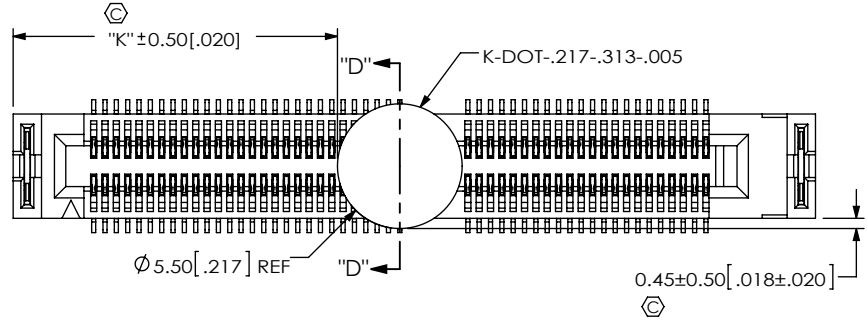
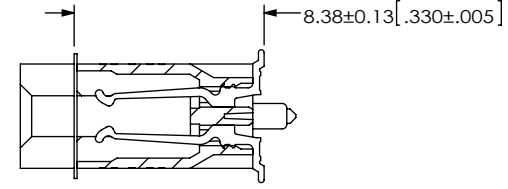


FIG 2
MEC5-050-01-X-DV-W1-K SHOWN
(DIFFERENT AS SHOWN, OTHERWISE SAME AS FIG 1)



SECTION "D"-"D"

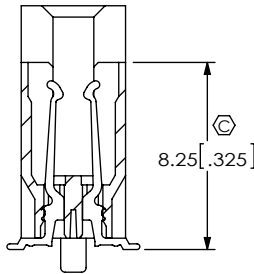
TABLE 2	
NO OF POS	"K"
-030	8.05 [0.317]
-040	10.55 [0.415]
-050	14.30 [0.563]
**_060	16.80 [0.661]
**_070	19.30 [0.760]
**_080	21.80 [0.858]
**_090	24.30 [0.957]
**_100	26.80 [1.055]

PROPRIETARY NOTE
THIS DOCUMENT CONTAINS CONFIDENTIAL AND PROPRIETARY INFORMATION AND ALL DESIGN, MANUFACTURING, REPRODUCTION, USE, PATENT RIGHTS AND SALES RIGHTS ARE EXPRESSLY RESERVED BY SAMTEC, INC. THIS DOCUMENT SHALL NOT BE DISCLOSED, IN WHOLE OR PART, TO ANY UNAUTHORIZED PERSON OR ENTITY NOR REPRODUCED, TRANSFERRED OR INCORPORATED IN ANY OTHER PROJECT IN ANY MANNER WITHOUT THE EXPRESS WRITTEN CONSENT OF SAMTEC, INC.

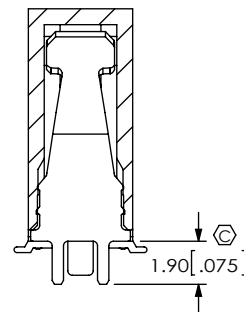
DO NOT SCALE DRAWING
SHEET SCALE: 3:1

samtec
520 PARK EAST BLVD, NEW ALBANY, IN 47150
PHONE: 812-944-6733 FAX: 812-948-5047
e-Mail info@SAMTEC.com code 55322


DESCRIPTION:
0.5mm HIGH SPEED EDGE CARD ASSEMBLY
DWG. NO.
MEC5-XXX-XX-X-DV-XX-K-XX
BY: JESSIE W 5/29/2015 SHEET 2 OF 3



IN-PROCESS 1
CUT COMB/ FILL C-400-01-L
& BREAK OFF



IN-PROCESS 2
FILL C-403-01-T & BREAK OFF

<p>PROPRIETARY NOTE</p> <p>THIS DOCUMENT CONTAINS CONFIDENTIAL AND PROPRIETARY INFORMATION AND ALL DESIGN, MANUFACTURING, REPRODUCTION, USE, PATENT RIGHTS AND SALES RIGHTS ARE EXPRESSLY RESERVED BY SAMTEC, INC. THIS DOCUMENT SHALL NOT BE DISCLOSED, IN WHOLE OR PART, TO ANY UNAUTHORIZED PERSON OR ENTITY NOR REPRODUCED, TRANSFERRED OR INCORPORATED IN ANY OTHER PROJECT IN ANY MANNER WITHOUT THE EXPRESS WRITTEN CONSENT OF SAMTEC, INC.</p>	 <p>520 PARK EAST BLVD, NEW ALBANY, IN 47150 PHONE: 812-944-6733 FAX: 812-948-5047 e-Mail info@SAMTEC.com code 55322</p>
<p>DO NOT SCALE DRAWING</p> <p>SHEET SCALE: 3:1</p>	<p>DESCRIPTION: 0.5mm HIGH SPEED EDGE CARD ASSEMBLY</p> <p>DWG. NO. MEC5-XXX-XX-X-DV-XX-K-XX</p> <p>BY: JESSIE W 5/29/2015 SHEET 3 OF 3</p>