

GENDER
-J: JACK

TERMINATION
-BHT: BULKHEAD 1 (RG174 & RG316)

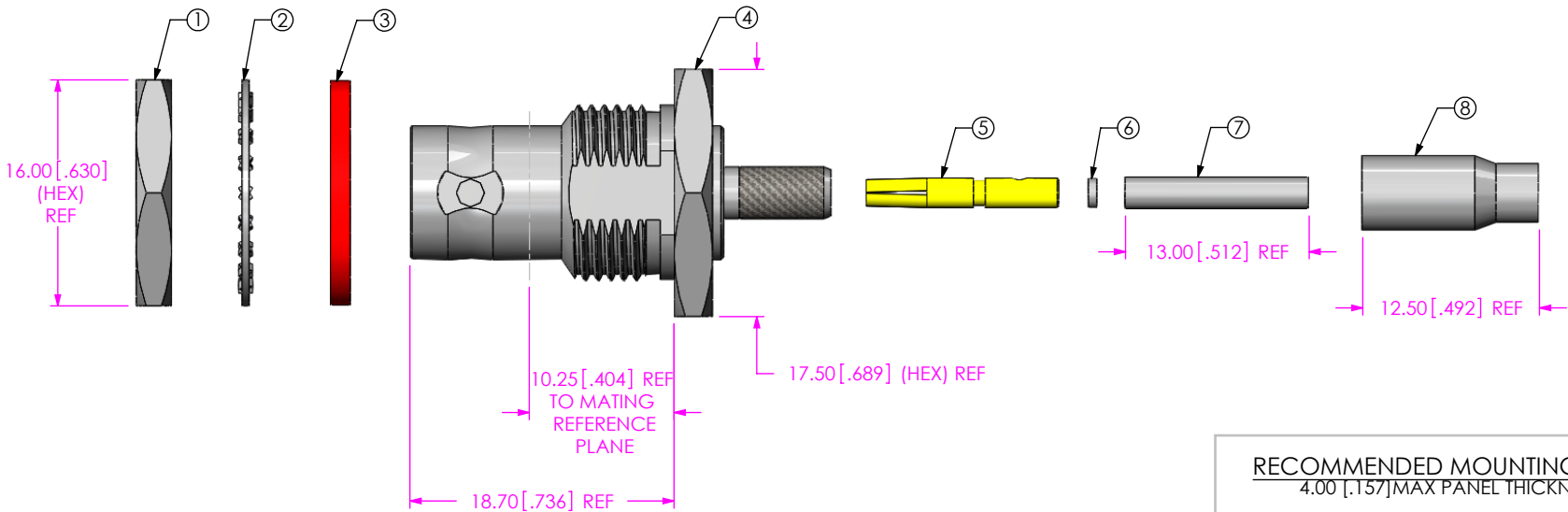
TYPE
-C: CABLE

ORIENTATION
-ST: STRAIGHT

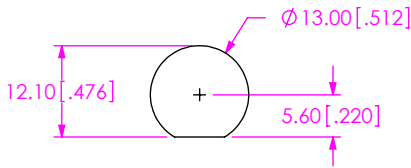
PLATING SPECIFICATION **L**
-HN: HEAVY GOLD / NICKEL
30μ" Au / 50μ" Ni MIN ON PIN,
100μ" Ni MIN ON OUTER CONTACT
-GN: GOLD / NICKEL
10μ" Au / 50μ" Ni MIN ON PIN
100μ" Ni MIN ON OUTER CONTACT
(SEE TABLE 1)

DO NOT
SCALE FROM
THIS PRINT

| TABLE 1 | | | |
|---------|---------------|-----------------------|----------------|
| ITEM | COMPONENT | -HN | -GN |
| 1 | HEX NUT | BTNC-NUT-001-N | |
| 2 | LOCK WASHER | BTNC-LWAS-001-N | |
| 3 | GASKET | BTNC-GKT-001 | |
| 4 | SUB ASSEMBLY | SUB-BNC5-J-C-N-ST-BH1 | |
| 5 | SKT | BTNC-SKT-003-H | BTNC-SKT-003-G |
| 6 | INSULATOR | BTNC-INS-003 | |
| 7 | INNER FERRULE | BTNC-FER-002-N | |
| 8 | OUTER FERRULE | BNC-FER-002-N | |



RECOMMENDED MOUNTING HOLE
4.00 [.157] MAX PANEL THICKNESS



NOTES:

1. REPRESENTS A CRITICAL DIMENSION.
2. NOTE DELETED.
3. NOTE DELETED.
4. NOTE DELETED.
5. PRODUCT TO BE PACKAGED PER PACKAGING STANDARD CO-HD-WI-3040-M.
6. NOTE DELETED.
7. NOTE DELETED.
8. NOTE DELETED.

UNLESS OTHERWISE SPECIFIED,
DIMENSIONS ARE IN MILLIMETERS [INCHES]

TOLERANCES ARE:
DECIMALS ANGLES
.X: ±0.3 [.01] 5°
.XX: ±0.13 [.005]
.XXX: ±0.051 [.0020]

PROPRIETARY NOTE

THIS DOCUMENT CONTAINS INFORMATION
CONFIDENTIAL AND PROPRIETARY TO
SAMTEC, INC. AND SHALL NOT BE REPRODUCED
OR TRANSFERRED TO OTHER DOCUMENTS OR
DISCLOSED TO OTHERS OR USED FOR ANY
PURPOSE OTHER THAN THAT WHICH IT WAS
OBTAINED WITHOUT THE EXPRESSED WRITTEN
CONSENT OF SAMTEC, INC.

MATERIAL: DO NOT SCALE DRAWING SHEET SCALE: 2:1

SHELL, FERRULE, NUT, WASHER: BRASS
CONTACT: COPPER ALLOY
DIELECTRIC: PTFE
GASKET: SILICONE

samtec

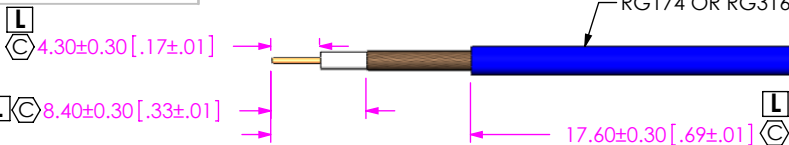
520 PARK EAST BLVD, NEW ALBANY, IN 47150
PHONE: 812-944-6733 FAX: 812-948-5047
e-Mail: info@SAMTEC.com code 55322

DESCRIPTION:
BNC5 STR. CABLE JACK, RG174 & RG316 - 50 OHM

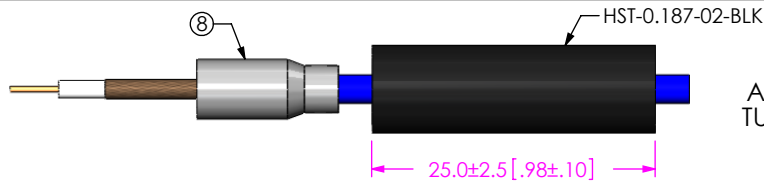
DWG. NO.
BNC5-J-C-XX-ST-BH1

BY: R MUSSER 12/19/2007 SHEET 1 OF 2

REVISION L



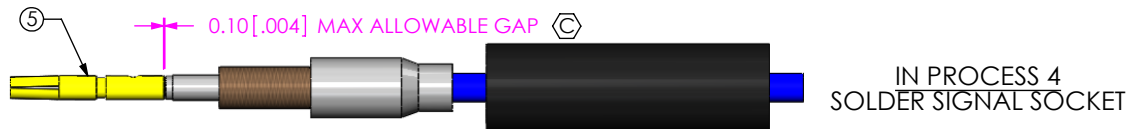
IN PROCESS 1
STRIP AND TIN INNER
CONDUCTOR



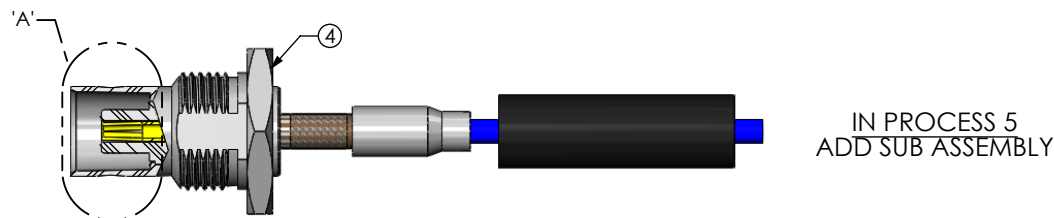
IN PROCESS 2
ADD HEAT SHRINK
TUBE AND FERRULE



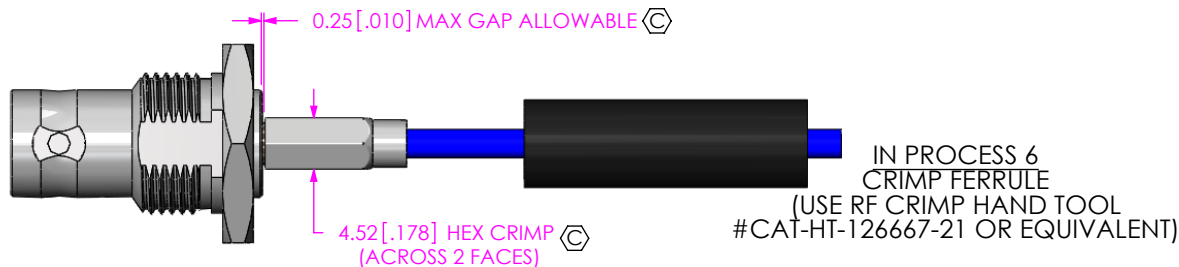
IN PROCESS 3
FLARE SHIELD, ADD INNER
FERRULE AND INSULATOR



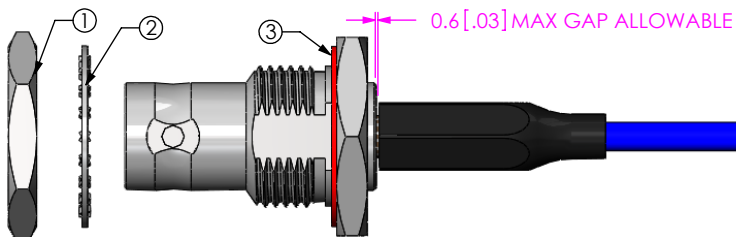
IN PROCESS 4
SOLDER SIGNAL SOCKET



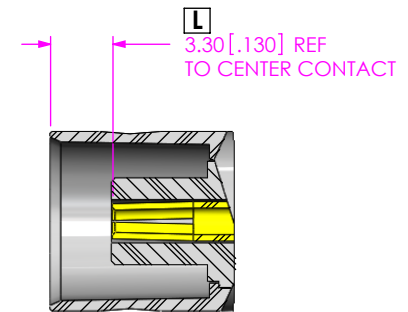
IN PROCESS 5
ADD SUB ASSEMBLY



IN PROCESS 6
CRIMP FERRULE
(USE RF CRIMP HAND TOOL
#CAT-HT-126667-21 OR EQUIVALENT)

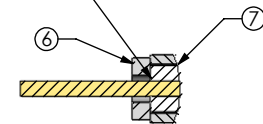


IN PROCESS 7
APPLY HEAT SHRINK TUBE
& ADD GASKET



DETAIL 'A'
SCALE 2.5 : 1

INNER FERRULE AND
WASHER SHOULD SIT
FLUSH WITH CABLE
DIELECTRIC AS SHOWN



DETAIL 'B'
SCALE 4 : 1

L

F:\DWG\MISC\MKTG\BNC5-J-C-XX-ST-BH1-MKT.SLDDRW

PROPRIETARY NOTE

THIS DOCUMENT CONTAINS INFORMATION
CONFIDENTIAL AND PROPRIETARY TO
SAMTEC, INC. AND SHALL NOT BE REPRODUCED
OR TRANSFERRED TO OTHER DOCUMENTS OR
DISCLOSED TO OTHERS OR USED FOR ANY
PURPOSE OTHER THAN THAT WHICH IT WAS
OBTAINED WITHOUT THE EXPRESSED WRITTEN
CONSENT OF SAMTEC, INC.

DO NOT SCALE DRAWING

SHEET SCALE: 5:4

samtec

520 PARK EAST BLVD, NEW ALBANY, IN 47150
PHONE: 812-944-6733 FAX: 812-948-5047
e-Mail info@SAMTEC.com code 55322

DESCRIPTION:
BNC5 STR. CABLE JACK, RG174 & RG316 - 50 OHM

DWG. NO.
BNC5-J-C-XX-ST-BH1

BY: R MUSSER 12/19/2007 SHEET 2 OF 2