

DO NOT  
SCALE FROM  
THIS PRINT

TABLE 1					
ITEM	COMPONENT	-HF	-HN	-GF	-GN
1	SUB ASSEMBLY	SUB-BNC5-J-C-F-ST-BH2	SUB-BNC5-J-C-N-ST-BH2	SUB-BNC5-J-C-F-ST-BH2	SUB-BNC5-J-C-N-ST-BH2
2	SOCKET	BTNC-SKT-004-H		BTNC-SKT-004-G	
3	INSULATOR	BNC5-INS-002			
4	INNER FERRULE	MCX-FER-012-F	MCX-FER-012-N	MCX-FER-012-F	MCX-FER-012-N
5	OUTER FERRULE	MCX-FER-004-F	MCX-FER-004-N	MCX-FER-004-F	MCX-FER-004-N
6	GASKET	BTNC-GKT-001			
7	LOCK WASHER	BTNC-LWAS-001-F	BTNC-LWAS-001-N	BTNC-LWAS-001-F	BTNC-LWAS-001-N
8	HEX NUT	BTNC-NUT-001-F	BTNC-NUT-001-N	BTNC-NUT-001-F	BTNC-NUT-001-N

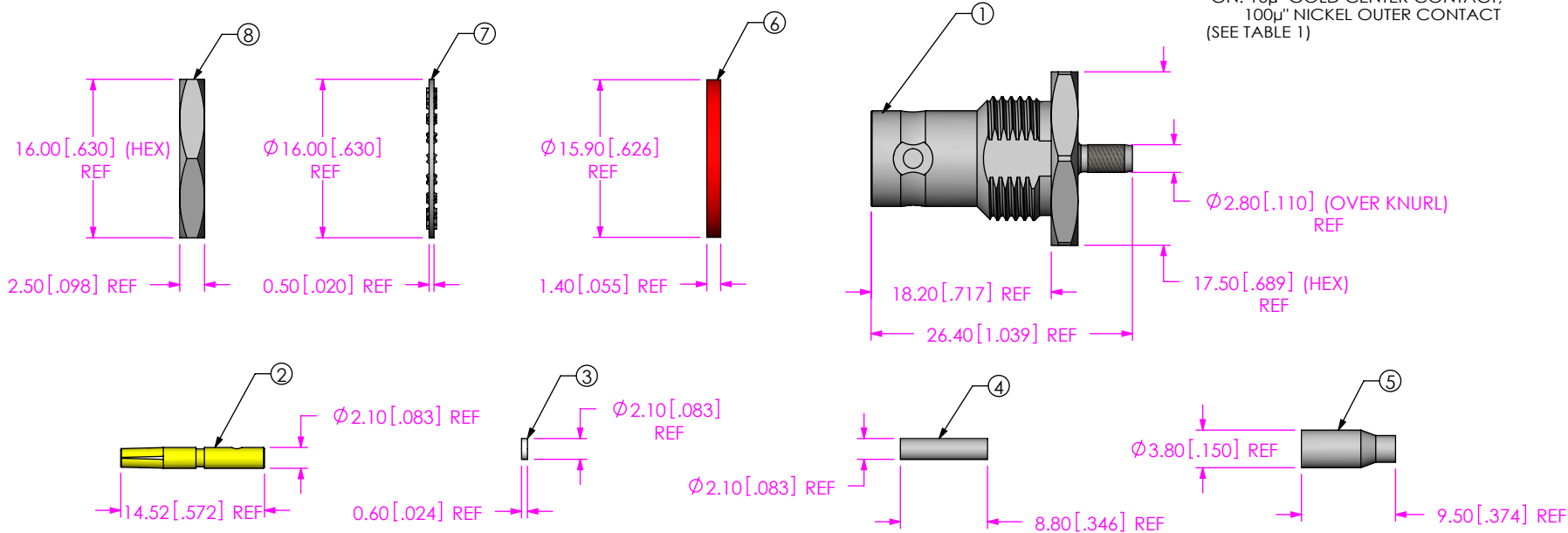
GENDER  
-J: JACK

TERMINATION  
-BH2: BULKHEAD RG178

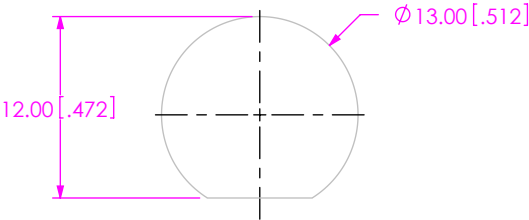
TYPE  
-C: CABLE

ORIENTATION  
-ST: STRAIGHT

PLATING SPECIFICATION  
-HF: 30µ" GOLD CENTER CONTACT,  
3µ" GOLD OUTER CONTACT  
-HN: 30µ" GOLD CENTER CONTACT,  
100µ" NICKEL OUTER CONTACT  
-GF: 10µ" GOLD CENTER CONTACT,  
3µ" GOLD OUTER CONTACT  
-GN: 10µ" GOLD CENTER CONTACT,  
100µ" NICKEL OUTER CONTACT  
(SEE TABLE 1)



RECOMMENDED MOUNTING HOLE  
3.00[.118] MAX PANEL THICKNESS



NOTES:

1. NOTE DELETED.

2. PRODUCT TO BE BULK PACKAGED PER PACKAGING STANDARD CO-RF-WI-3040-M.

UNLESS OTHERWISE SPECIFIED,  
DIMENSIONS ARE IN  
MILLIMETERS [INCHES].  
TOLERANCES ARE:

DECIMALS	ANGLES
X.X: ±0.3 [.01]	5°
X.XX: ±0.13 [.005]	
X.XXX: ±0.051 [.0020]	

PROPRIETARY NOTE

THIS DOCUMENT CONTAINS CONFIDENTIAL AND PROPRIETARY INFORMATION AND ALL DESIGN, MANUFACTURING, REPRODUCTION, USE, PATENT RIGHTS AND SALES RIGHTS ARE EXPRESSLY RESERVED BY SAMTEC, INC. THIS DOCUMENT SHALL NOT BE DISCLOSED, IN WHOLE OR PART, TO ANY UNAUTHORIZED PERSON OR ENTITY NOR REPRODUCED, TRANSFERRED OR INCORPORATED IN ANY OTHER PROJECT IN ANY MANNER WITHOUT THE EXPRESS WRITTEN CONSENT OF SAMTEC, INC.

**samtec**

520 PARK EAST BLVD., NEW ALBANY, IN 47150  
PHONE: 812-944-6733 FAX: 812-948-5047  
e-Mail: info@SAMTEC.com code 55322

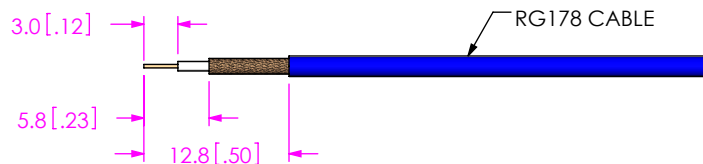
MATERIAL: DO NOT SCALE DRAWING SHEET SCALE: 3:2

CABLE BODY, FERRULES, LOCK WASHER, HEX NUT: BRASS  
GASKET: SILICON  
SOCKET: PHOS BRONZE  
DIELECTRICS: PTFE

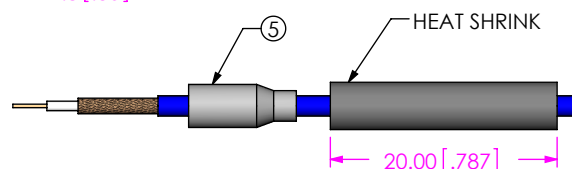
DESCRIPTION:  
50 OHM, BNC STRAIGHT JACK BULKHEAD, RG178

DWG. NO.  
**BNC5-J-C-XX-ST-BH2**

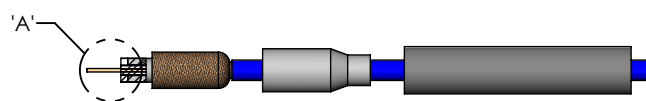
BY: ALVIN W 07/13/2011 SHEET 1 OF 2



**IN PROCESS 1**  
STRIP CABLE AND TIN INNER CONDUCTOR



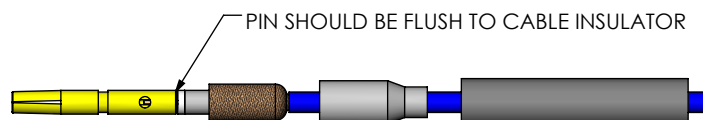
**IN PROCESS 2**  
ADD HEAT SHRINK TUBING & OUTER FERRULE



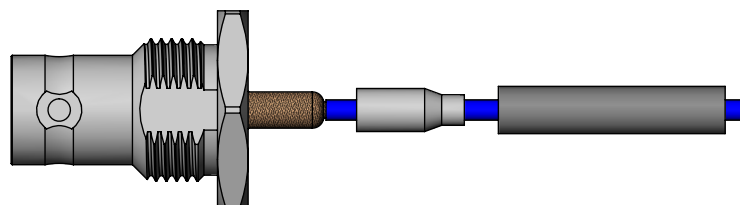
**IN PROCESS 3**  
FLARE SHIELD, ADD INSULATOR & INNER FERRULE

INSULATOR WASHER AND  
INNER FERRULE TO BE  
FLUSH WITH CABLE  
DIELECTRIC

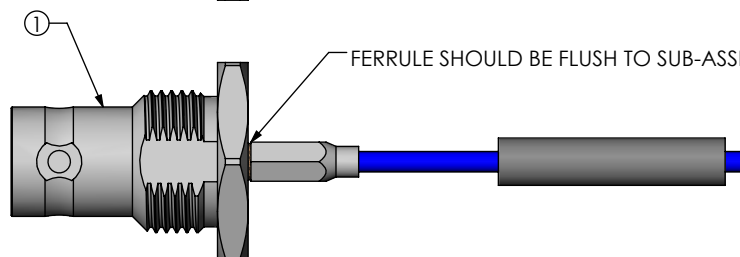
DETAIL 'A'  
SCALE 6 : 1



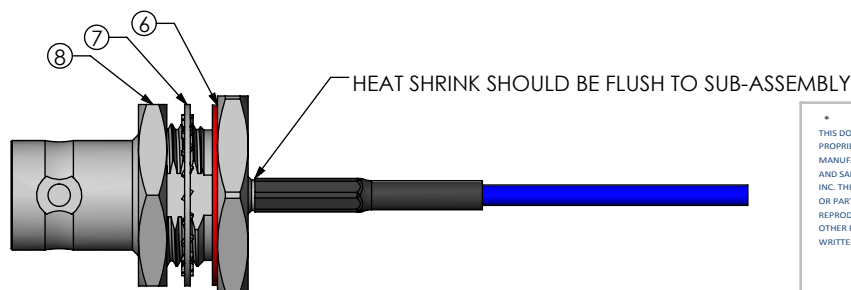
**IN PROCESS 4**  
FLARE SHIELD, SOLDER SIGNAL SOCKET



**IN PROCESS 5**  
ADD SUB ASSEMBLY



**IN PROCESS 6**  
CRIMP OUTER FERRULE  
(USE RF CRIMP HAND TOOL #CAT-RF-FER-001  
USE 0.136" DIE SIZE)



**IN-PROCESS 7**  
ACTIVATE HEAT SHRINK TUBING  
& ADD GASKET

**PROPRIETARY NOTE**  
THIS DOCUMENT CONTAINS CONFIDENTIAL AND  
PROPRIETARY INFORMATION AND ALL DESIGN,  
MANUFACTURING, REPRODUCTION, USE, PATENT RIGHTS  
AND SALES RIGHTS ARE EXPRESSLY RESERVED BY SAMTEC,  
INC. THIS DOCUMENT SHALL NOT BE DISCLOSED, IN WHOLE  
OR PART, TO ANY UNAUTHORIZED PERSON OR ENTITY NOR  
REPRODUCED, TRANSFERRED OR INCORPORATED IN ANY  
OTHER PROJECT IN ANY MANNER WITHOUT THE EXPRESS  
WRITTEN CONSENT OF SAMTEC, INC.

DO NOT SCALE DRAWING

SHEET SCALE: 3:2

**samtec**

520 PARK EAST BLVD, NEW ALBANY, IN 47150  
PHONE: 812-944-6733 FAX: 812-948-5047  
e-Mail: info@SAMTEC.com code 55322

DESCRIPTION:  
50 OHM, BNC STRAIGHT JACK BULKHEAD, RG178

DWG. NO.  
**BNC5-J-C-XX-ST-BH2**

BY: ALVIN W 07/13/2011 SHEET 2 OF 2