

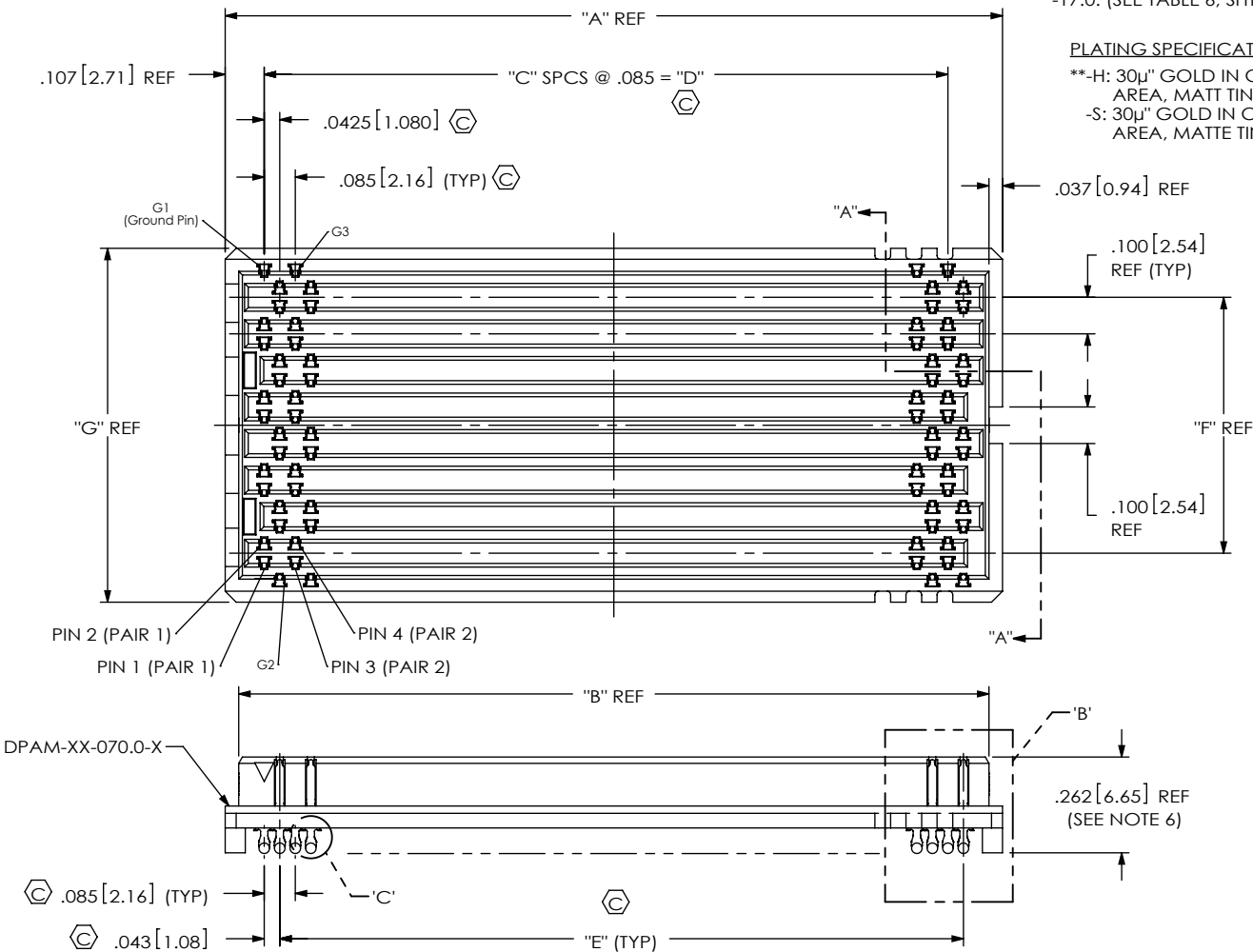
PATENT NUMBERS

6979238 / 7137832
 6969286 / 7178232
 7159312 / 7172438
 7052337 / 7125293

DO NOT
 SCALE FROM
 THIS PRINT

DPAM-XX-XX.X-X-X-X-XX

FIG 1
 DPAM-23-07.0-X-8-X SHOWN
 (SOME CENTER FEATURES REMOVED FOR CLARITY)



No OF POSITIONS
 □-04, □-06, -08, -15, -23, *** □-30
 (PER ROW)

LEAD STYLE
 -07.0: (SEE TABLE 3)
 *-09.0: (SEE TABLE 6, SHT3)
 -11.0: (SEE TABLE 6, SHT3)
 -14.0: (SEE TABLE 6, SHT3)
 *-17.0: (SEE TABLE 6, SHT3)

PLATING SPECIFICATION
 **-H: 30μ" GOLD IN CONTACT
 AREA, MATT TIN ON TAIL
 -S: 30μ" GOLD IN CONTACT
 AREA, MATTE TIN ON TAIL.

OPTION
 -A: ALIGNMENT PIN
 (SEE FIG. 3, SHT 4)
 -K: KAPTON PAD
 (SEE FIG. 4, SHT 4)
 -TR: TAPE & REEL
 (LEAVE BLANK FOR TRAYS)
 *** □-GP: GUIDE POST
 (SEE FIG. 5, SHT 5)
 (ONLY AVAILABE WITH -07.0
 LEAD STYLE)

SOLDER CRIMP MATERIAL
 -1: 63%TIN/37%LEAD
 (USE SUB-T-1M26-07.0-X-01 OR
 USE SUB-T-1M32-XX.X-X-1)
 -2: 96.5% TIN/3.5% SILVER
 (USE SUB-T-1M26-07.0-X-02 OR
 USE SUB-T-1M32-XX.X-X-2)

ROW
 -8: 8 DIFFERENTIAL PAIR ROWS
 □-3: 3 DIFFERENTIAL PAIR ROWS

* = NOT TOOLED
 □ = ONLY AVAILABLE WITH -07.0 LEAD STYLE
 □ = ONLY AVAILABLE IN 3 ROW WITH -07.0 LEAD
 STYLE & 23 POSITIONS
 ** = FOR EXISTING CUSTOMER ONLY
 *** = NOT RELEASED FOR PRODUCTION

SIZE	DIFFERENTIAL PAIRS PER ARRAY (ROW)	
	-3	-8
-04	6 PAIRS	16 PAIRS
-06	12 PAIRS	32 PAIRS
-08	18 PAIRS	48 PAIRS
-15	39 PAIRS	104 PAIRS
-23	63 PAIRS	168 PAIRS
***-30	84 PAIRS	N/A

DPAF LEAD STYLE	DPAM LEAD STYLE				
	-07.0	*-09.0	-11.0	-14.0	*-17.0
-03.0	10mm	12mm	14mm	17mm	20mm

STYLE	BODY CALLOUT	TERMINAL CALLOUT
-07.0	DPAM-XX-07.0-X-X-XX	SUB-T-1M26-07.0-X-XX

(SEE SHEET 2 FOR LEAD STYLE -09.0 THRU -17.0)

NOTES:

1. REPRESENTS A CRITICAL DIMENSION.
2. MINIMUM PUSHOUT FORCE: .5 LBS.
3. PARTS PACKAGED IN TRAYS IF -TR OPTION IS NOT SELECTED
4. SOLDER CRIMP LOCATION MUST BE VERIFIED ON 6 CONSECUTIVE PINS.
5. SEE RECOMMENDED FOOTPRINT DRAWING FOR STENCIL REQUIREMENTS.
6. MEASURE ON ALL 4 CORNERS OF THE ASSEMBLY, INCLUDING ADJACENT ROW.
7. DIMENSION TO BE CHECKED AT TIPS

(SEE SHEET 2 FOR BOTTOM VIEW)

UNLESS OTHERWISE SPECIFIED,
 DIMENSIONS ARE IN INCHES.
 TOLERANCES ARE:
 DECIMALS ANGLES
 .XX: ±.01 [.3] 2°
 .XXX: ±.005 [.13]
 .XXXX: ±.0020 [.050]

PROPRIETARY NOTE
 THIS DOCUMENT CONTAINS CONFIDENTIAL AND
 PROPRIETARY INFORMATION AND ALL DESIGN,
 MANUFACTURING, REPRODUCTION, USE, PATENT RIGHTS
 AND SALES RIGHTS ARE EXPRESSLY RESERVED BY SAMTEC,
 INC. THIS DOCUMENT SHALL NOT BE DISCLOSED, IN WHOLE
 OR PART, TO ANY UNAUTHORIZED PERSON OR ENTITY NOR
 REPRODUCED, TRANSFERRED OR INCORPORATED IN ANY
 OTHER PROJECT IN ANY MANNER WITHOUT THE EXPRESS
 WRITTEN CONSENT OF SAMTEC, INC.

MATERIAL: DO NOT SCALE DRAWING SHEET SCALE: 2:1
 INSULATOR: L.C.P., COLOR: BLACK
 TERMINAL: COPPER ALLOY

DESCRIPTION:
 .085 PITCH DP TERMINAL ASSEMBLY
 DWG. NO.



520 PARK EAST BLVD, NEW ALBANY, IN 47150
 PHONE: 812-944-6733 FAX: 812-948-5047
 e-Mail: info@SAMTEC.com code 55322

DPAM-XX-XX.X-X-X-X-XX

BY: CHAD F 6/3/2003 SHEET 1 OF 5



(BOTTOM VIEW PROJECTED FROM SHEET 1)
(SOME CENTER FEATURES REMOVED FOR CLARITY)

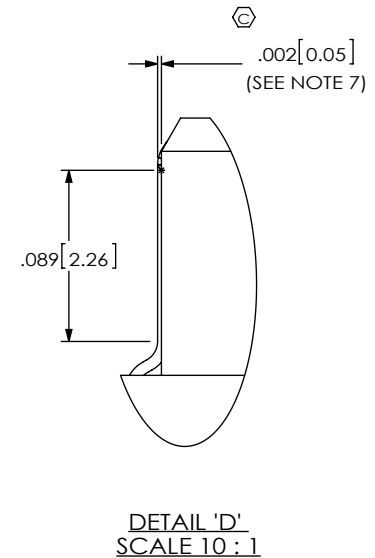
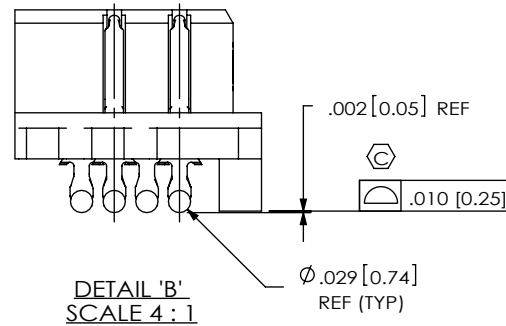
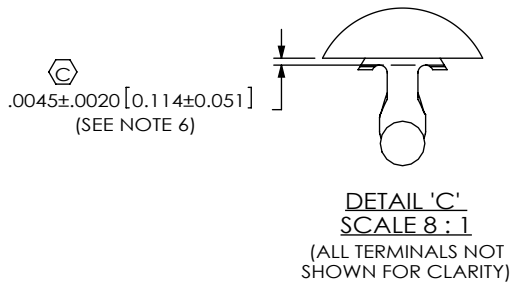
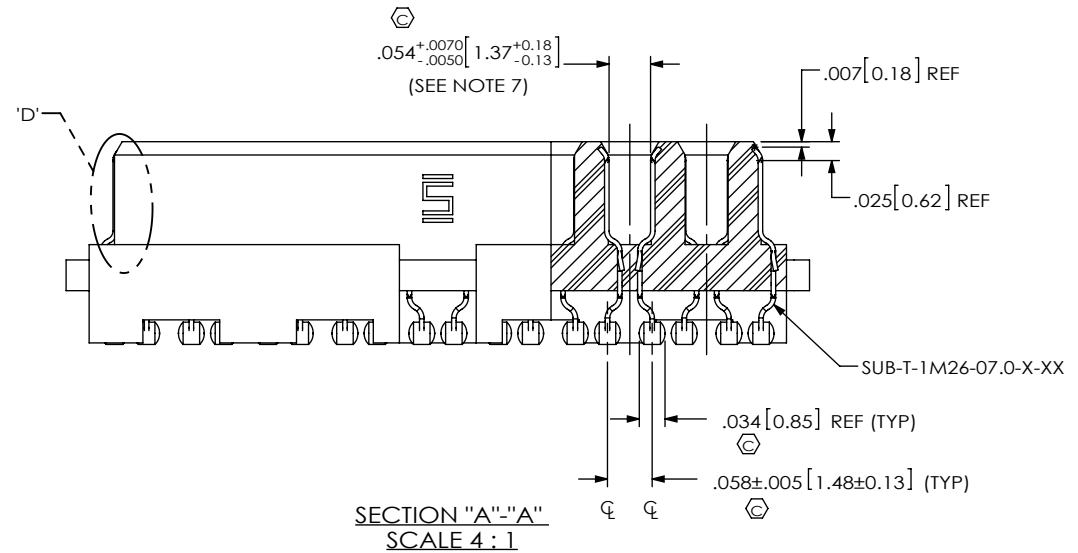


TABLE 4

No. OF POS	"A"	"B"	"C"	"D"	"E"
-04	.511 [12.98]	.437 [11.10]	3	.255 [6.48]	.255 [6.48]
-06	.681 [17.30]	.607 [15.42]	5	.425 [10.80]	.425 [10.80]
-08	.851 [21.62]	.777 [19.74]	7	.595 [15.11]	.595 [15.11]
-15	1.446 [36.73]	1.372 [34.85]	14	1.190 [30.23]	1.190 [30.23]
-23	2.126 [54.00]	2.052 [52.12]	22	1.870 [47.50]	1.870 [47.50]
-30	2.721 [69.11]	2.647 [67.23]	29	2.465 [62.61]	2.465 [62.61]

TABLE 5

ROW	"F"	"G"
-3	.200 [5.08]	.468 [11.89]
-8	.700 [17.78]	.968 [24.59]

<p>PROPRIETARY NOTE</p> <p>THIS DOCUMENT CONTAINS CONFIDENTIAL AND PROPRIETARY INFORMATION AND ALL DESIGN, MANUFACTURING, REPRODUCTION, USE, PATENT RIGHTS AND SALES RIGHTS ARE EXPRESSLY RESERVED BY SAMTEC, INC. THIS DOCUMENT SHALL NOT BE DISCLOSED, IN WHOLE OR PART, TO ANY UNAUTHORIZED PERSON OR ENTITY NOR REPRODUCED, TRANSFERRED OR INCORPORATED IN ANY OTHER PROJECT IN ANY MANNER WITHOUT THE EXPRESS WRITTEN CONSENT OF SAMTEC, INC.</p> <p>DO NOT SCALE DRAWING</p> <p>SHEET SCALE: 2:1</p>	<p>520 PARK EAST BLVD, NEW ALBANY, IN 47150 PHONE: 812-944-6733 FAX: 812-948-5047 e-Mail info@SAMTEC.com code 55322</p>	
	DESCRIPTION: .085 PITCH DP TERMINAL ASSEMBLY	
	DWG. NO. DPAM-XX-XX.X-X-X-X-XX	
	BY: CHAD F	6/3/2003

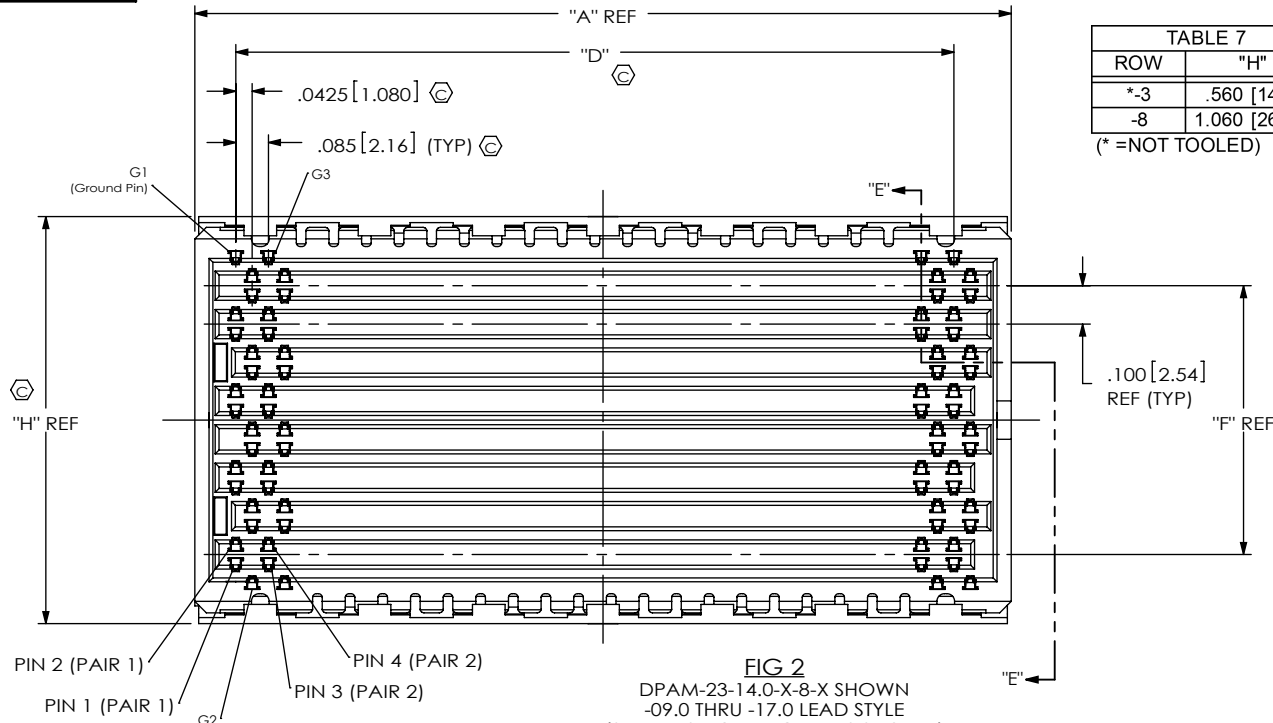


TABLE 7

ROW	"H"
*-3	.560 [14.22]
-8	1.060 [26.92]

(* = NOT TOOLED)

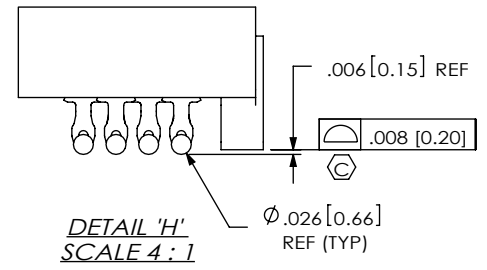
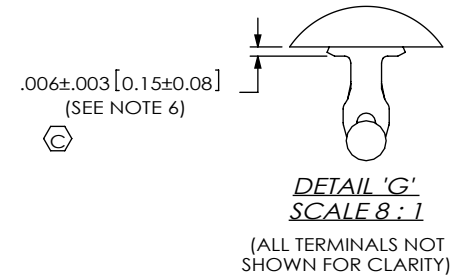


FIG 2
 DPAM-23-14.0-X-8-X SHOWN
 -09.0 THRU -17.0 LEAD STYLE
 (SAME AS FIG 1, EXCEPT AS SHOWN)
 (SOME CENTER FEATURES REMOVED FOR CLARITY)

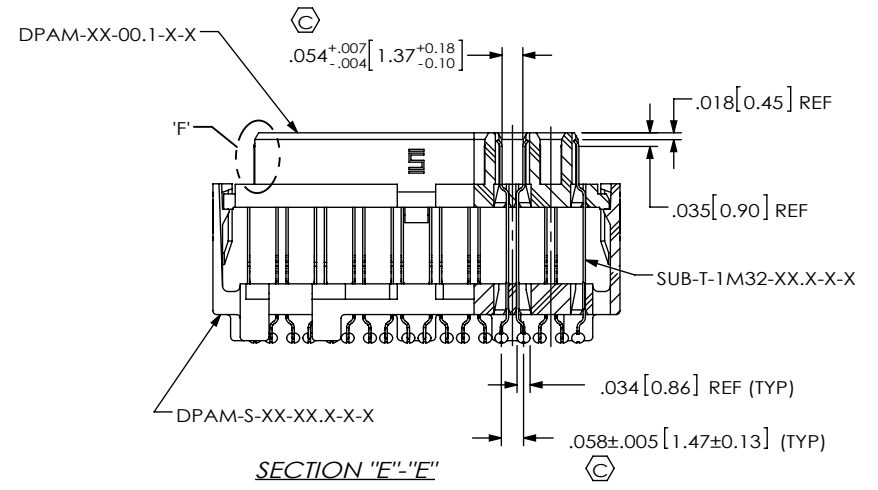
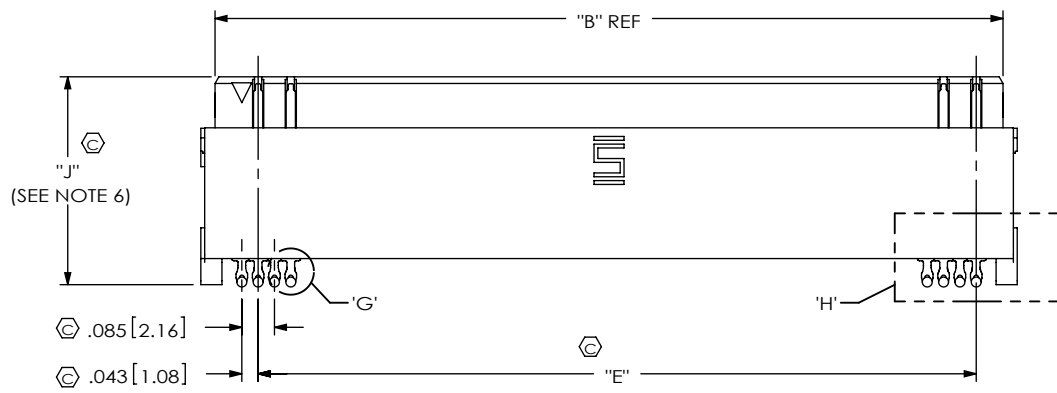


TABLE 6

STYLE	"J"	SPACER BODY CALLOUT	BODY CALLOUT	TERMINAL CALLOUT
*-09.0	.342 [8.69]	DPAM-S-XX-09.0-X-X	DPAM-XX-00.1-X-X	SUB-T-1M32-09.0-X-X
-11.0	.422 [10.72]	DPAM-S-XX-11.0-X-X	DPAM-XX-00.1-X-X	SUB-T-1M32-11.0-X-X
-14.0	.538 [13.67]	DPAM-S-XX-14.0-X-X	DPAM-XX-00.1-X-X	SUB-T-1M32-14.0-X-X
*-17.0	.656 [16.66]	DPAM-S-XX-17.0-X-X	DPAM-XX-00.1-X-X	SUB-T-1M32-17.0-X-X

(* NOT TOOLED)

PROPRIETARY NOTE
 THIS DOCUMENT CONTAINS CONFIDENTIAL AND PROPRIETARY INFORMATION AND ALL DESIGN, MANUFACTURING, REPRODUCTION, USE, PATENT RIGHTS AND SALES RIGHTS ARE EXPRESSLY RESERVED BY SAMTEC, INC. THIS DOCUMENT SHALL NOT BE DISCLOSED, IN WHOLE OR PART, TO ANY UNAUTHORIZED PERSON OR ENTITY NOR REPRODUCED, TRANSFERRED OR INCORPORATED IN ANY OTHER PROJECT IN ANY MANNER WITHOUT THE EXPRESS WRITTEN CONSENT OF SAMTEC, INC.

DO NOT SCALE DRAWING
 SHEET SCALE: 2:1

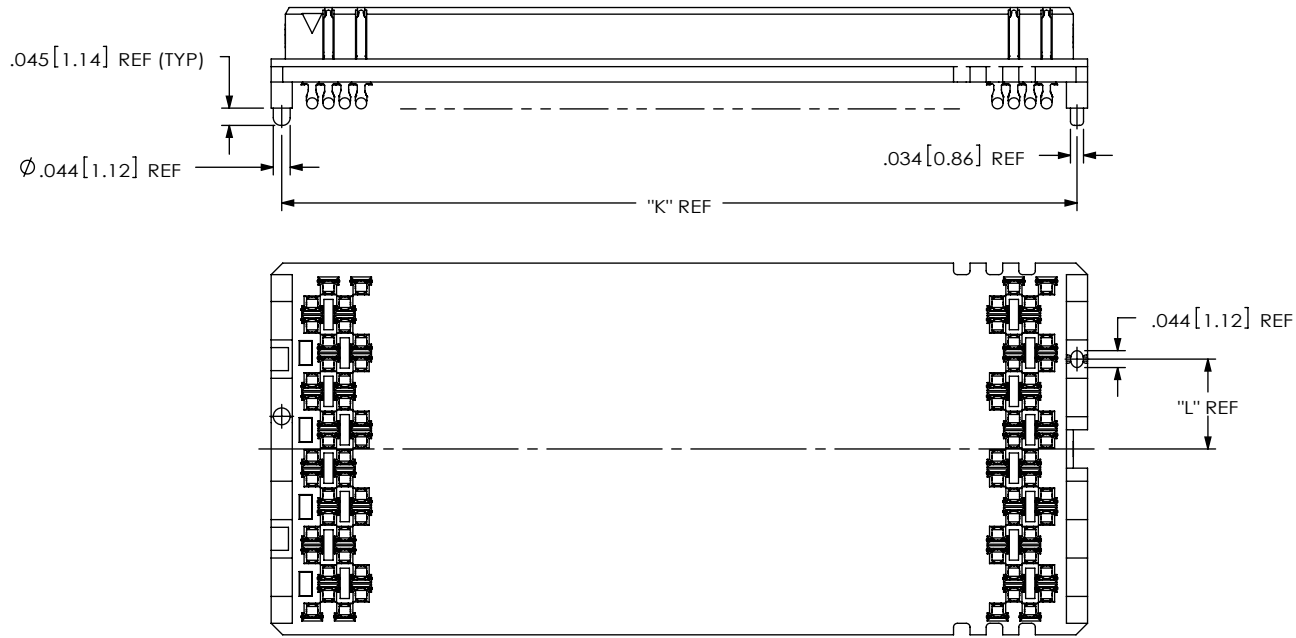
520 PARK EAST BLVD. NEW ALBANY, IN 47150
 PHONE: 812-944-6733 FAX: 812-948-5047
 e-Mail: info@SAMTEC.com code 55322

DESCRIPTION:
 .085 PITCH DP TERMINAL ASSEMBLY

DWG. NO.
DPAM-XX-XX.X-X-X-X-XX

BY: CHAD F 6/3/2003 SHEET 3 OF 5

FIG 3
 DPAM-23-07.0-X-8-1-A SHOWN
 (SAME AS FIG 1, EXCEPT AS SHOWN)
 (SOME CENTER FEATURES REMOVED FOR CLARITY)

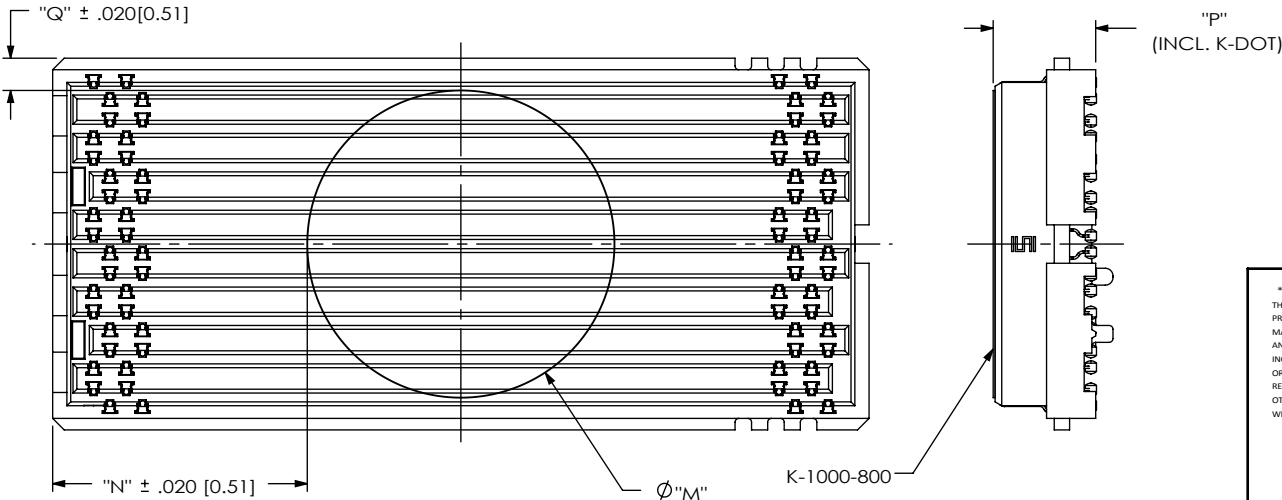


No. OF POS	"K"
-04	.456 [11.58]
-06	.626 [15.90]
-08	.796 [20.22]
-15	1.391 [35.33]
-23	2.071 [52.60]
***-30	2.666 [67.72]

(*** = NOT RELEASED FOR PRODUCTION)

ROW	"L"
-3	.165 [4.19]
-8	.234 [5.94]

FIG 4
 DPAM-23-07.0-X-8-X-A-K SHOWN
 (SAME AS FIG 1, EXCEPT AS SHOWN)
 (SOME CENTER FEATURES REMOVED FOR CLARITY)



ROW	Ø "M"	"Q"	"N"					
			-04 POS	-06 POS	-08 POS	-15 POS	-23 POS	-30 POS
-3	.295 [7.50]	.0865 [2.197]	.106 [2.69]	.191 [4.85]	.276 [7.01]	.574 [14.57]	.914 [23.20]	1.211 [30.76]
-8	.295 [7.50]	.3365 [8.547]	.106 [2.69]	.191 [4.85]	N/A	N/A	N/A	N/A
-8	.788 [20.00]	.0900 [2.286]	N/A	N/A	.026 [0.66]	.324 [8.22]	.664 [16.85]	.961 [24.41]

STYLE	"P"
-07.0	.267 [6.78]
*-09.0	.347 [8.81]
-11.0	.427 [10.85]
-14.0	.543 [13.79]
*-17.0	.661 [16.79]

(* = NOT TOOLED)

PROPRIETARY NOTE
 THIS DOCUMENT CONTAINS CONFIDENTIAL AND PROPRIETARY INFORMATION AND ALL DESIGN, MANUFACTURING, REPRODUCTION, USE, PATENT RIGHTS AND SALES RIGHTS ARE EXPRESSLY RESERVED BY SAMTEC, INC. THIS DOCUMENT SHALL NOT BE DISCLOSED, IN WHOLE OR PART, TO ANY UNAUTHORIZED PERSON OR ENTITY NOR REPRODUCED, TRANSFERRED OR INCORPORATED IN ANY OTHER PROJECT IN ANY MANNER WITHOUT THE EXPRESS WRITTEN CONSENT OF SAMTEC, INC.

DO NOT SCALE DRAWING

SHEET SCALE: 2:1



520 PARK EAST BLVD, NEW ALBANY, IN 47150
 PHONE: 812-944-6733 FAX: 812-948-5047
 e-Mail: info@SAMTEC.com code 55322

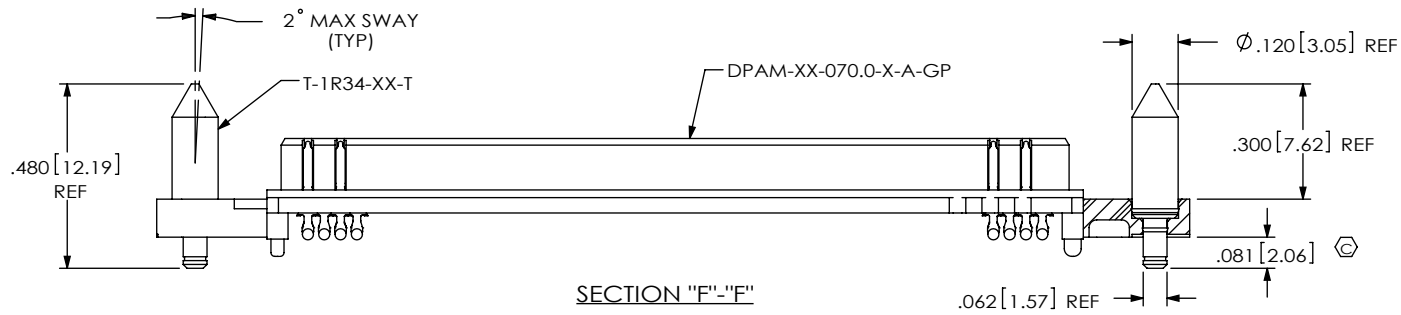
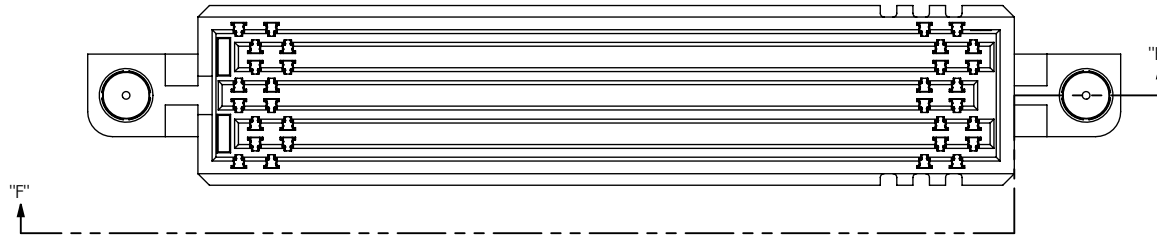
DESCRIPTION: .085 PITCH DP TERMINAL ASSEMBLY

DWG. NO. DPAM-XX-XX.X-X-X-X-XX

BY: CHAD F 6/3/2003 SHEET 4 OF 5

FIG 5

*** DPAM-23-07.0-X-3-X-A-GP SHOWN
 (ONLY AVAILABLE ON 3 ROW, 23 POSITIONS)
 (SAME AS FIG 1, EXCEPT AS SHOWN)
 (SOME CENTER FEATURES REMOVED FOR CLARITY)
 *** = NOT RELEASED FOR PRODUCTION



PROPRIETARY NOTE
 THIS DOCUMENT CONTAINS CONFIDENTIAL AND PROPRIETARY INFORMATION AND ALL DESIGN, MANUFACTURING, REPRODUCTION, USE, PATENT RIGHTS AND SALES RIGHTS ARE EXPRESSLY RESERVED BY SAMTEC, INC. THIS DOCUMENT SHALL NOT BE DISCLOSED, IN WHOLE OR PART, TO ANY UNAUTHORIZED PERSON OR ENTITY NOR REPRODUCED, TRANSFERRED OR INCORPORATED IN ANY OTHER PROJECT IN ANY MANNER WITHOUT THE EXPRESS WRITTEN CONSENT OF SAMTEC, INC.

DO NOT SCALE DRAWING
 SHEET SCALE: 2:1



520 PARK EAST BLVD, NEW ALBANY, IN 47150
 PHONE: 812-944-6733 FAX: 812-948-5047
 e-Mail info@SAMTEC.com code 55322

DESCRIPTION: .085 PITCH DP TERMINAL ASSEMBLY

DWG. NO. DPAM-XX-XX.X-X-X-X-XX

BY: CHAD F 6/3/2003 SHEET 5 OF 5