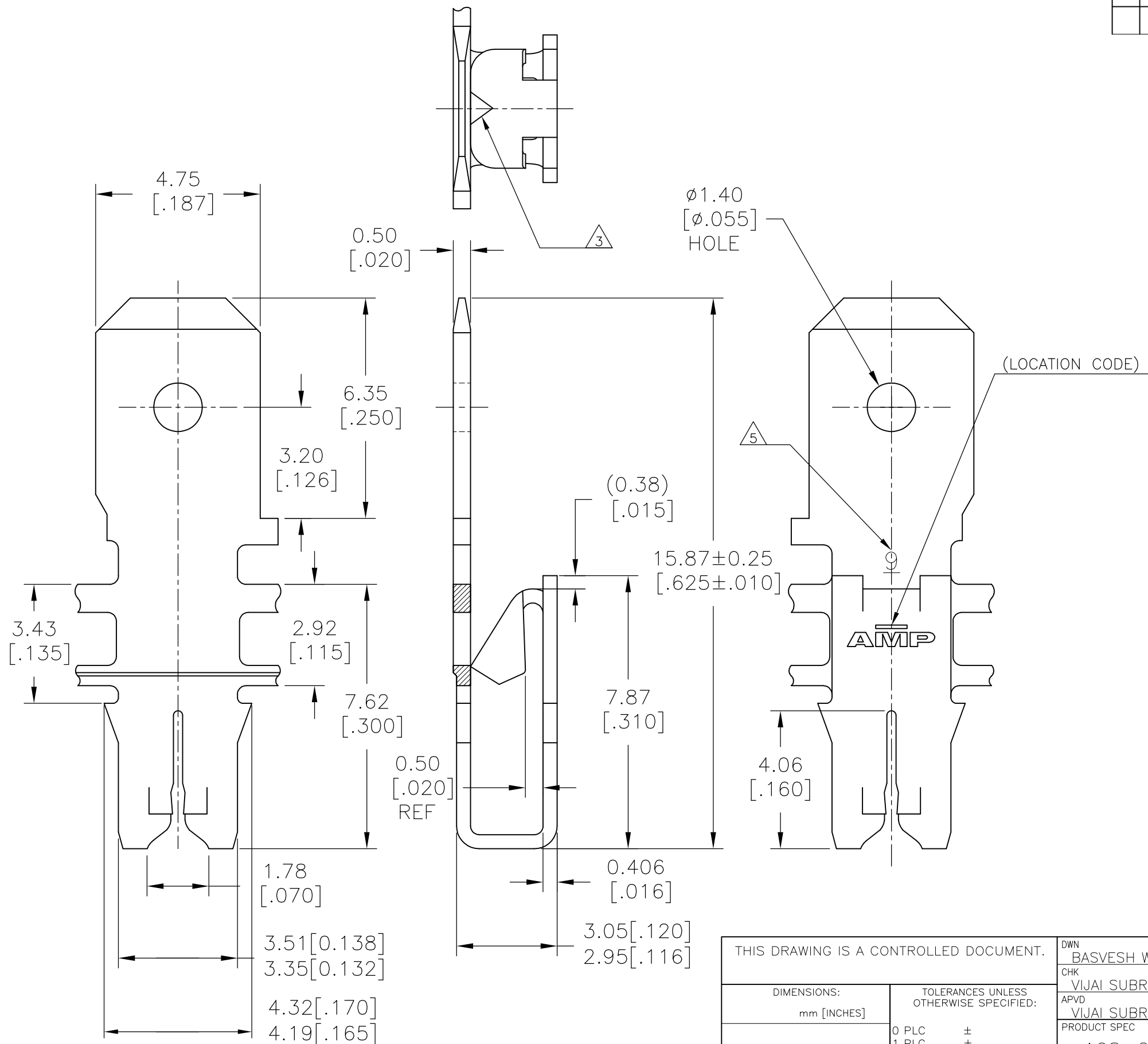


THIS DRAWING IS UNPUBLISHED. RELEASED FOR PUBLICATION - F .
 © COPYRIGHT - TE CONNECTIVITY ALL RIGHTS RESERVED.

P	LTR	DESCRIPTION	DATE	DWN	APVD
	A	INITIAL PRODUCTION RELEASE	21SEP2017	SV	PKS



- 1 CONTINUOUS STRIP ON REELS WITH TERMINALS LOCATED ON 5.59±0.08 CENTERS.
- 2 SLOT ACCEPTS A SINGLE OR DOUBLE WIRE ONLY
COPPER WIRE RANGE 0.38-0.50mm [#27-#24] AWG
ALUMINUM WIRE RANGE 0.45-0.50mm [#25-#24] AWG
- 3 POKE-IN ACCEPTS A 0.5~0.8mm² (#20~#18)AWG SOLID OR FUSED STRANDED LEAD WIRE. BUT POKE-IN TAB IS NOT APPLICABLE.
- 4 AFTER INSERTION INTO PLASTIC HOLDER TAB PORTION MUST BE BENT OVER 45° TO 90° OR POTTED-IN TO PREVENT PULL-OUT WHEN MATING RECEPTACLE IS DISCONNECTED.
- 5 IDENTIFICATION NUMBER 9 FOR MAGNET WIRE SLOT SIZE.
- 6 APPLICABLE RECEPTACLE CONT: 187 SERIES POSITIVE LOCK EX, 187 SERIES FASTON.
*WHEN RECEPTACLE MATE WITH 187 TAB, MUST ATTEND NO DAMAGE TO MAG-MATE TERMINAL.
- 7 EITHER PART WILL ACCEPT THE POKE IN MATING OR 187 RECEPTACLE MATING.

POKE-IN TAB NOT APPLICABLE	TIN PLATED	2825382-1
MATING TO POKE IN	FINISH	PART NUMBER

THIS DRAWING IS A CONTROLLED DOCUMENT.

DIMENSIONS: mm [INCHES]	TOLERANCES UNLESS OTHERWISE SPECIFIED:
	0 PLC ±
	1 PLC ± -
	2 PLC ± 0.20[.008]
	3 PLC ±
	4 PLC ±
	ANGLES ±
	FINISH ±
MATERIAL BRASS	SEE TABLE

DWN	14NOV2016
BASVESH WARAD	
CHK	14NOV2016
VIJAI SUBRAMANIAN	
APVD	14NOV2016
VIJAI SUBRAMANIAN	
PRODUCT SPEC	
108-2012	
APPLICATION SPEC	
114-2046	
WEIGHT	0.00

STE TE Connectivity			
NAME TAB, POKE-IN / .187 COMBINATION, 300 SERIES MAG-MATE			
SIZE	CAGE CODE	DRAWING NO	RESTRICTED TO
A3	00779	C-2825382	-
CUSTOMER DRAWING		SCALE	SHEET
		8:1	1 OF 1
		REV	A

187 SERIES POSITIVE LOCK EX	STRAIGHT TYPE	173722-1
		173723-1
		173724-X
		173725-X
	FLAG TYPE	175019-1