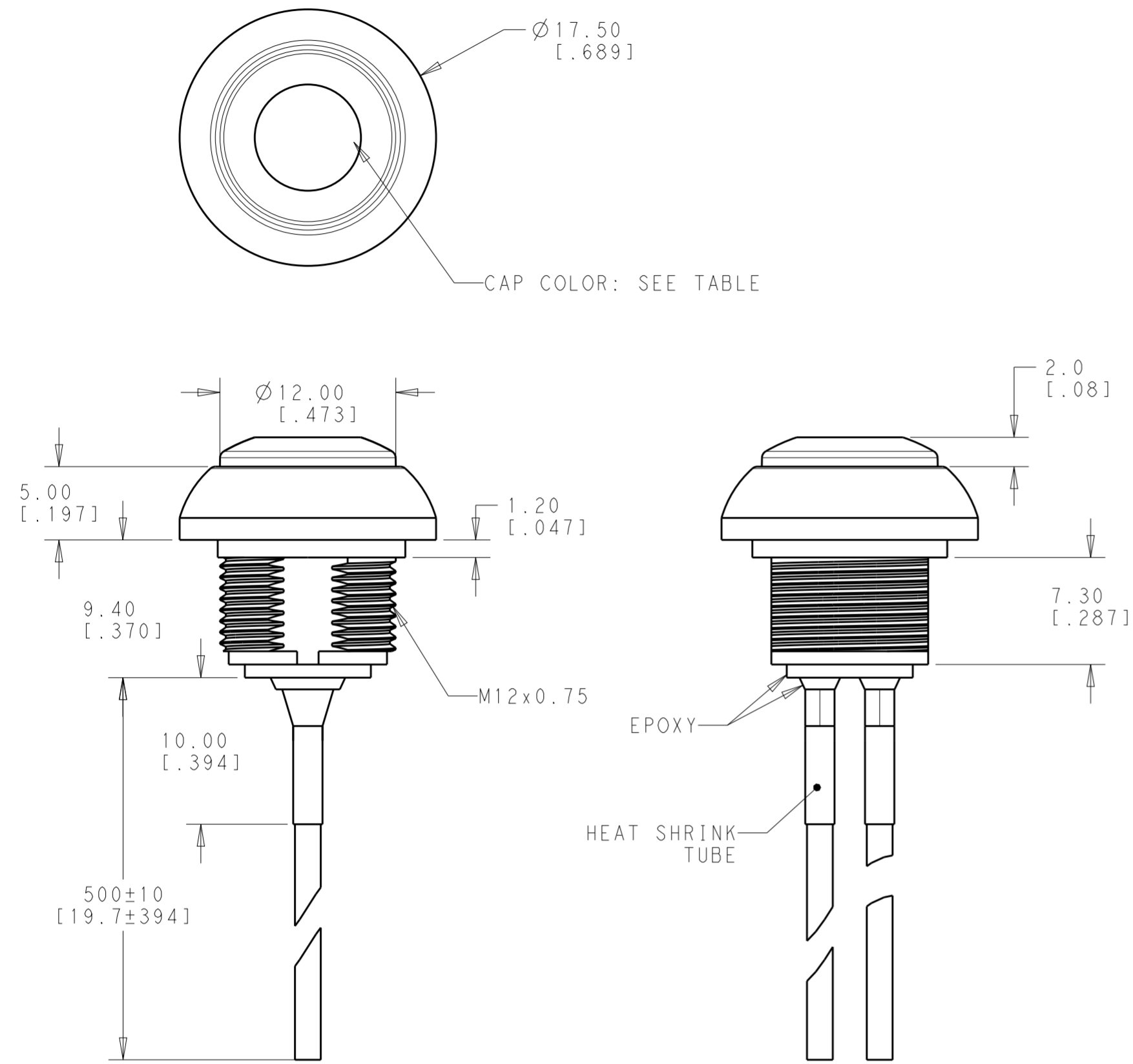


THIS DRAWING IS UNPUBLISHED. RELEASED FOR PUBLICATION
 © COPYRIGHT copyright.d8te- ALL RIGHTS RESERVED.

REVISIONS				
P	LTR	DESCRIPTION	DATE	APVD
2		REVISED TOLERANCE	20APR2018	JS AS

FLYING LEADS OFF-(ON)



Model No.	POS. 1	POS. 2
PB6	OFF	MOM(ON)
CONNECTED TERMINALS	OPEN	CLOSE
SCHEMATIC		

SWITCH FUNCTION

SPECIFICATIONS:

MAXIMUM CURRENT/VOLTAGE RATING WITH RESISTIVE LOAD:
 400mA 32VAC, 200mA 50VDC, 125mA 125VAC

INITIAL CONTACT RESISTANCE: 100mΩ MAXIMUM, RESISTANCE OF THE WIRE NOT INCLUDED.

INSULATION RESISTANCE: 1 GΩ MINIMUM AT 500 VDC
 DIELECTRIC STRENGTH: 1,500 VAC RMS

CONTACT BOUNCE: 10ms
 ELECTRICAL LIFE AT FULL LOAD: 500,000 CYCLES

MECHANICAL LIFE: 1,000,000 CYCLES
 TOTAL TRAVEL: 1.5 (.059)

ACTUATION FORCE: 3 TO 6N
 OPERATING TEMPERATURE: -30° TO 85° C

DEGREE OF PROTECTION: IP68, 1 HOUR @ 1 METER
 TORQUE: 0.5N·m MAXIMUM APPLIED TO NUT

PACKAGING:
 SWITCHES ARE BUNDLED. HARDWARE IS NOT ASSEMBLED TO THE SWITCH.

COMPLIANCE:
 ALL MATERIALS AND FINISHES SHALL COMPLY WITH EU DIRECTIVE 2002/95/EC OF 27JAN2003(ROHS)

SOLDER PROCESSING:
 MANUAL SOLDERING: SOLDER IRON, 30 WATTS, CONTROLLED AT 350° C, APPROXIMATELY 5 SECONDS WHILE APPLYING SOLDER.

1. HARDWARE IS SHIPPED UNASSEMBLED.

MATERIALS:

CAP: POLYAMIDE 6/6
 PLUNGER: POLYAMIDE 6/6 OR POLYCARBONATE

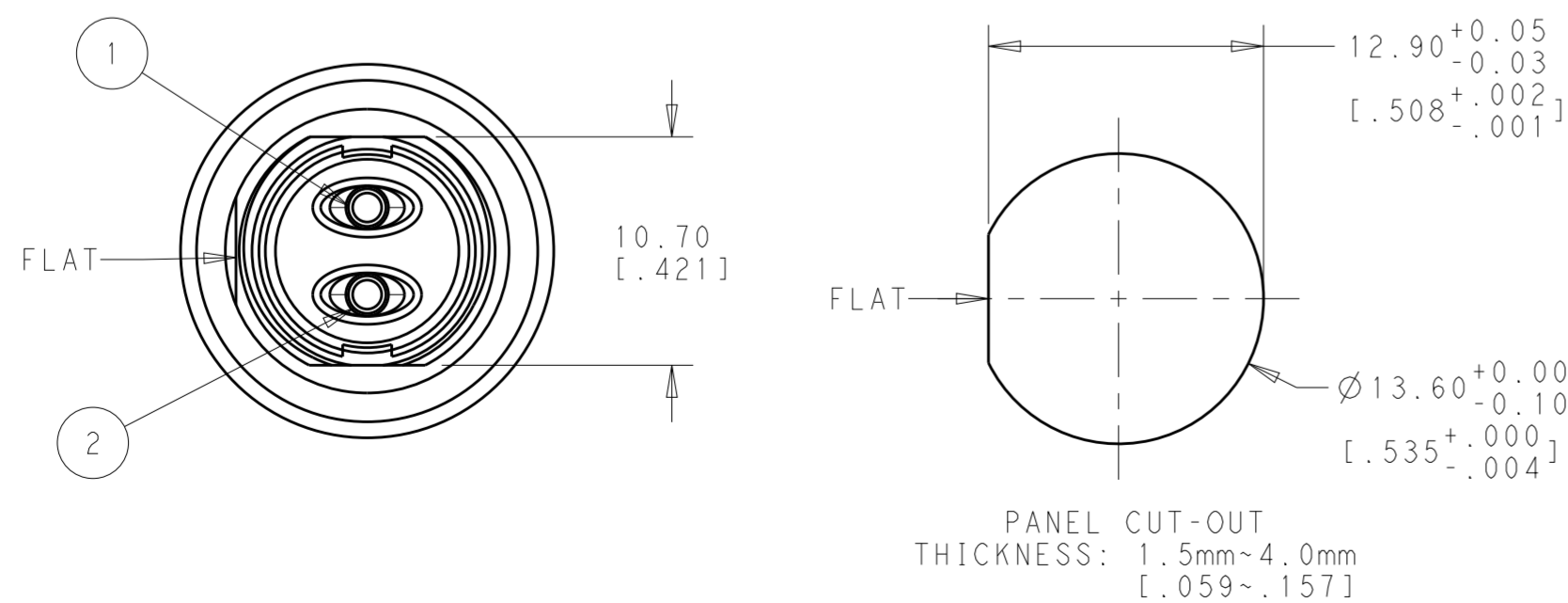
RUBBER: SILICONE
 BUSHING: POLYAMIDE 6/6

CASE: DIALLYL PHTHALATE (DAP) (UL94 V-0)
 TERMINALS/CONTACTS: COPPER ALLOY, GOLD OVER SILVER PLATED

HEX NUT: BRASS, NICKEL PLATED (1)
 LOCK WASHER: BRASS, NICKEL PLATED (1)

O-RING: SILICONE (1)
 WIRE: UL 3385, 20 AWG, SECTION 0.6mm²

SPRING: STEEL
 HEAT SHRINK TUBE: POLYOLEFIN

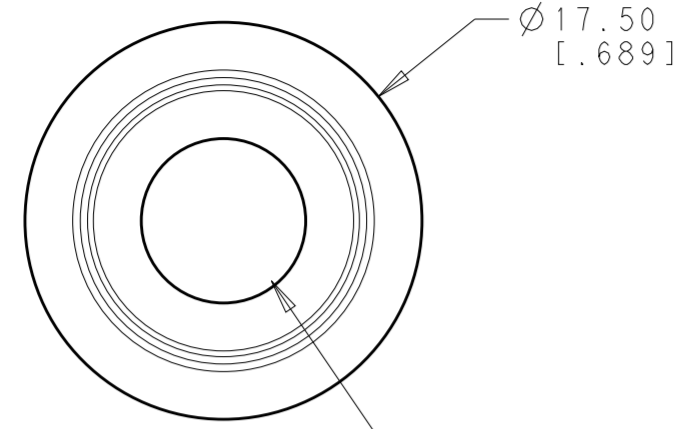


THIS DRAWING IS A CONTROLLED DOCUMENT.		DWN: RAWLS 22FEB2018		
DIMENSIONS: mm [INCHES]		CHK: ALEXANDER SHARPE 22FEB2018		
TOLERANCES UNLESS OTHERWISE SPECIFIED:		APVD: ALEXANDER SHARPE 22FEB2018		
0 PLC ± 1 PLC ±0.4 [0.016] 2 PLC ±0.25 [0.010] 3 PLC ± 4 PLC ± ANGLES ±5° FINISH -		PRODUCT SPEC - APPLICATION SPEC - WEIGHT -		
MATERIAL -		NAME: SWITCH, PUSHBUTTON, FLAT CAP NO LED, FLYING LEADS WITH HEAT SHRINK, SEALED, OFF-(ON) AND ON-(OFF) SIZE: A200779 CAGE CODE: C-2329386 DRAWING NO: 3:2 SCALE SHEET 1 OF 3 REV 2		
CUSTOMER DRAWING		RESTRICTED TO		

THIS DRAWING IS UNPUBLISHED. RELEASED FOR PUBLICATION
 © COPYRIGHT copyright.d8te- ALL RIGHTS RESERVED.

FLYING LEADS
ON-(OFF)

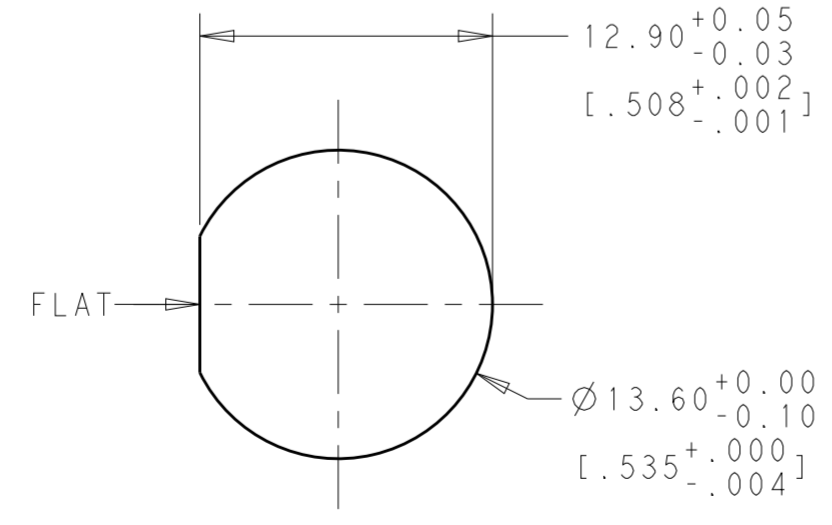
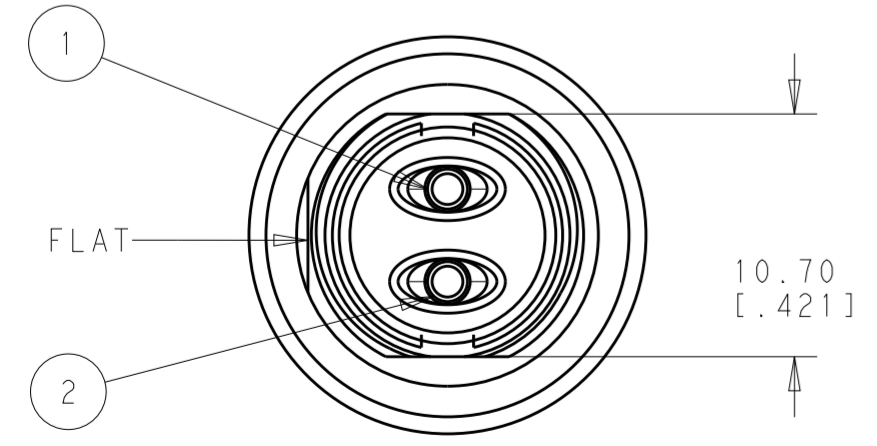
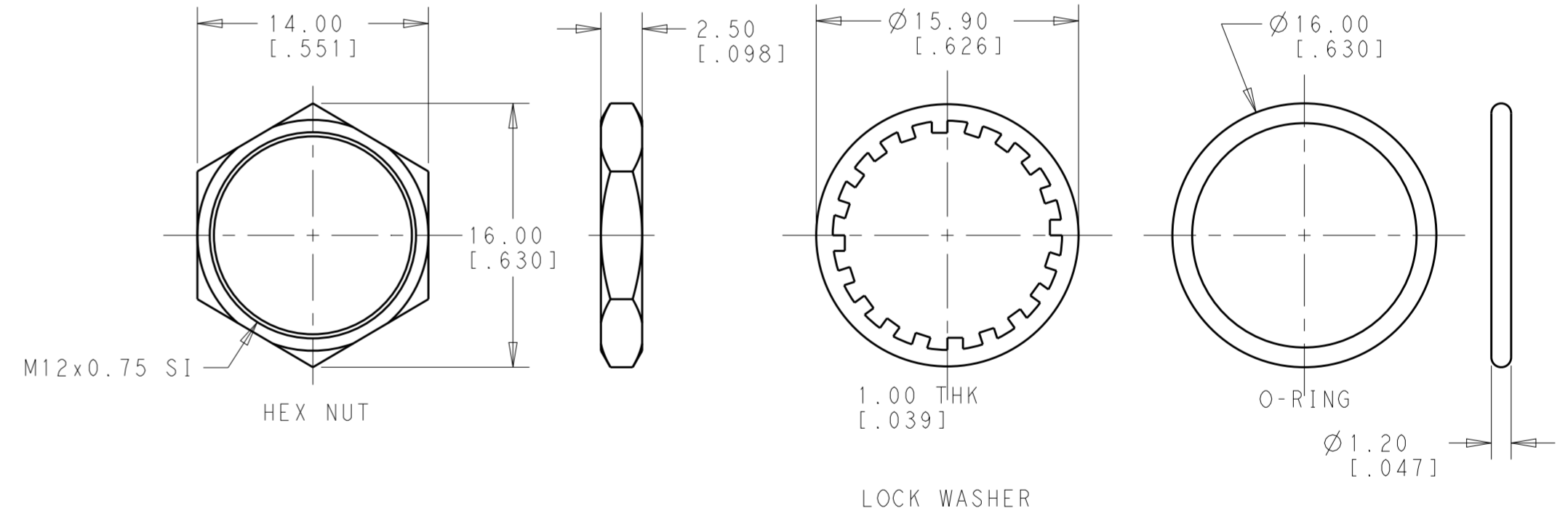
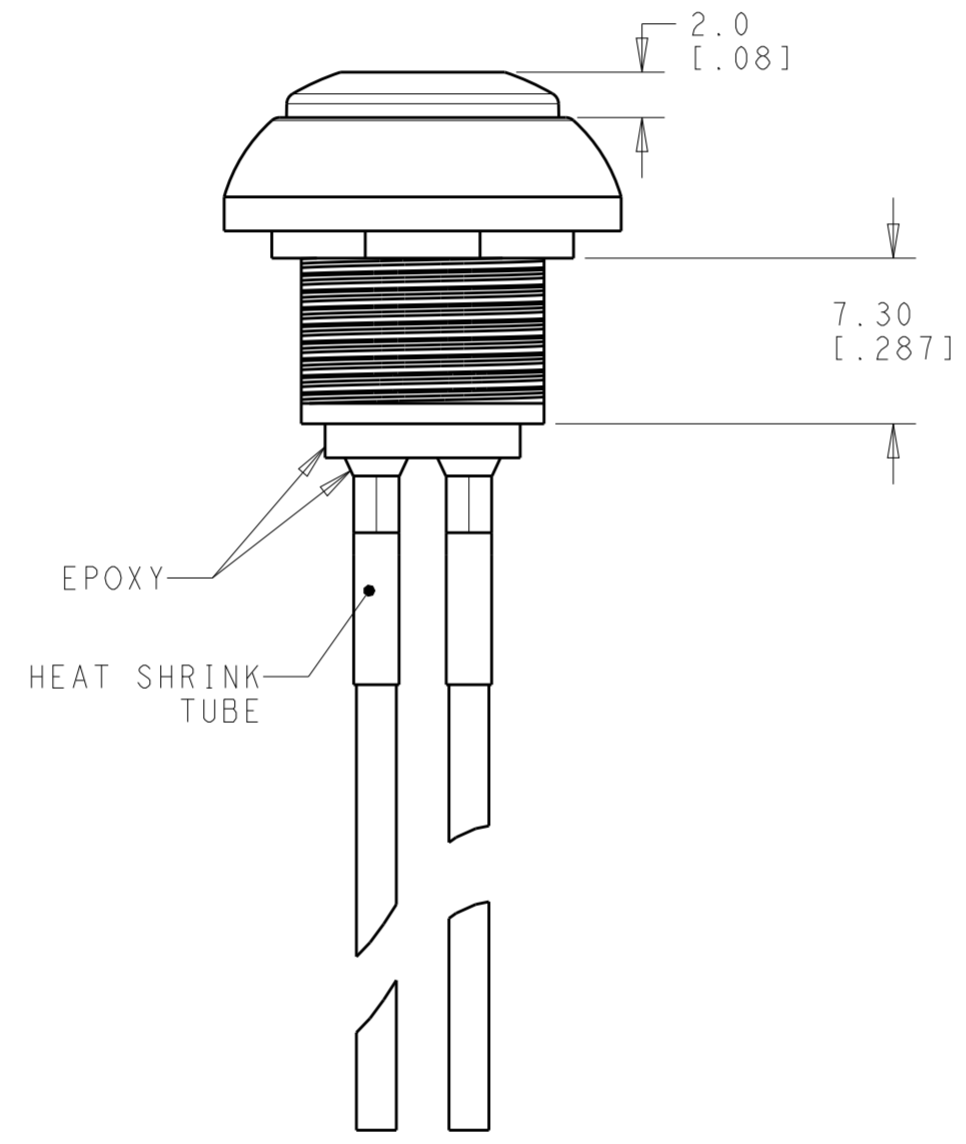
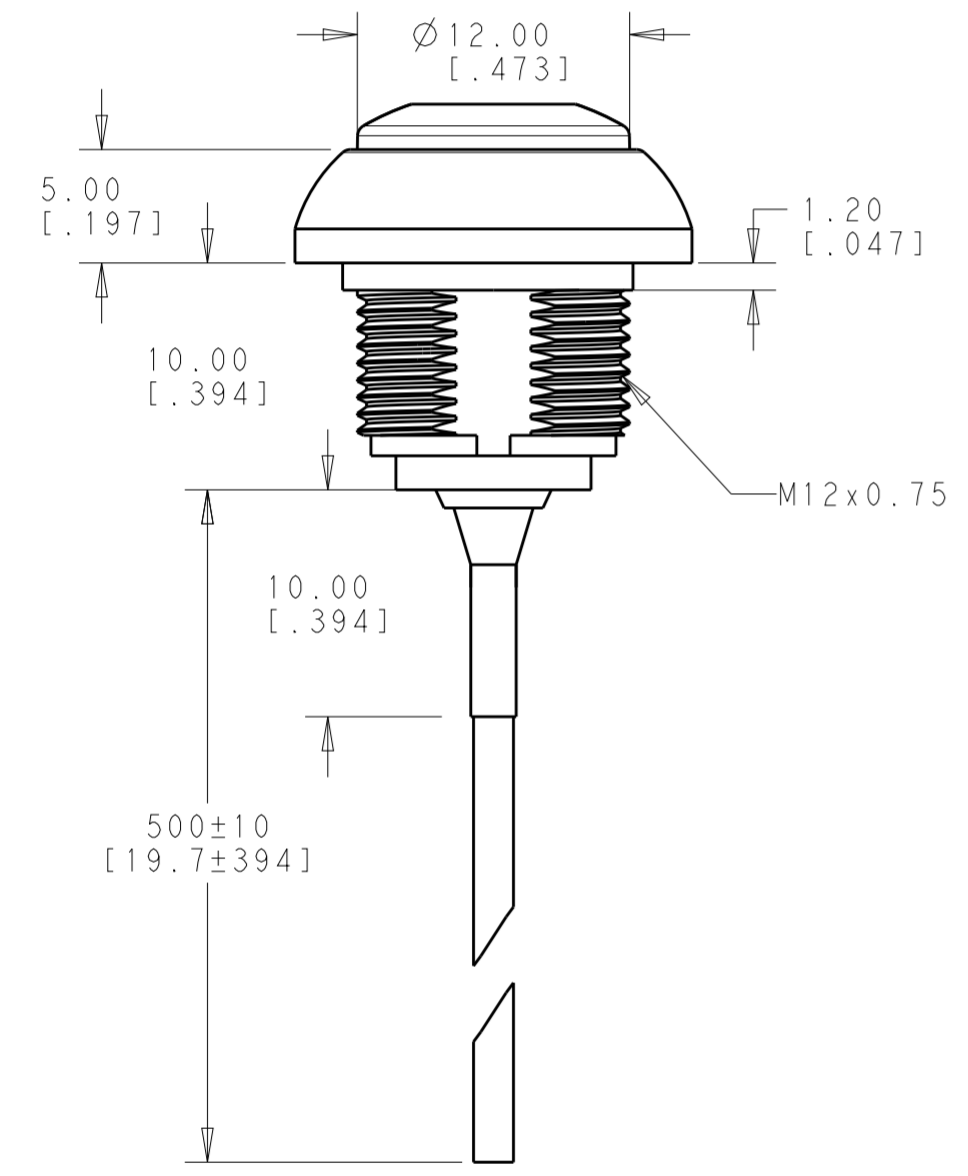
REVISIONS				
P	LTR	DESCRIPTION	DATE	APVD
-		SEE SHEET 1	-	-



CAP COLOR: SEE TABLE

Model No.	POS. 1	POS. 2
PB7	ON	MOM(OFF)
CONNECTED TERMINALS	CLOSE	OPEN
SCHEMATIC		

SWITCH FUNCTION



PANEL CUT-OUT
THICKNESS: 1.5mm~4.0mm
[.059~.157]

NO.	DESCRIPTION	WIRE COLOR
2	TERMINAL 2	BLACK
1	TERMINAL 1	BLACK

THIS DRAWING IS A CONTROLLED DOCUMENT.		DWN: RAVLS 22FEB2018		TE Connectivity		
DIMENSIONS: mm [INCHES]		CHK: ALEXANDER SHARPE 22FEB2018		NAME: SWITCH, PUSHBUTTON, FLAT CAP NO LED, FLYING LEADS WITH HEAT SHRINK, SEALED, OFF-(ON) AND ON-(OFF)		
TOLERANCES UNLESS OTHERWISE SPECIFIED:		APVD: ALEXANDER SHARPE 22FEB2018		SIZE: A2	CAGE CODE: 00779	DRAWING NO: C-2329386
MATERIAL: -		PRODUCT SPEC: -	RESTRICTED TO:			
FINISH: -		APPLICATION SPEC: -	SCALE: 3:2		SHEET: 2 OF 3	
CUSTOMER DRAWING		WEIGHT: -	REV: 2			

THIS DRAWING IS UNPUBLISHED. RELEASED FOR PUBLICATION
 © COPYRIGHT copyright.d8te ALL RIGHTS RESERVED.

REVISIONS				
P	LTR	DESCRIPTION	DATE	APVD
-		SEE SHEET 1	-	-

POLE	THROW	TERMINAL TYPE	CAP TYPE & COLOR	LED COLOR	TE DESCRIPTIVE PART NUMBER	PART NUMBER
SINGLE POLE	ON-(OFF) MOMENTARY	FLYING LEADS WITH HEAT SHRINK TUBE	FLAT, MATTE BLUE	N/A	PB7B2FM7M1CAL00Y500	1-2329386-0
			FLAT, MATTE GREEN	N/A	PB7B2FM6M1CAL00Y500	2329386-9
			FLAT, MATTE YELLOW	N/A	PB7B2FM5M1CAL00Y500	2329386-8
			FLAT, MATTE RED	N/A	PB7B2FM3M1CAL00Y500	2329386-7
			FLAT, MATTE BLACK	N/A	PB7B2FM2M1CAL00Y500	2329386-6
			FLAT, MATTE BLUE	N/A	PB6B2FM7M1CAL00Y500	2329386-5
	OFF-(ON) MOMENTARY		FLAT, MATTE GREEN	N/A	PB6B2FM6M1CAL00Y500	2329386-4
			FLAT, MATTE YELLOW	N/A	PB6B2FM5M1CAL00Y500	2329386-3
			FLAT, MATTE RED	N/A	PB6B2FM3M1CAL00Y500	2329386-2
			FLAT, MATTE BLACK	N/A	PB6B2FM2M1CAL00Y500	2329386-1

THIS DRAWING IS A CONTROLLED DOCUMENT.

DIMENSIONS: mm [INCHES]	TOLERANCES UNLESS OTHERWISE SPECIFIED: 0 PLC ± 1 PLC ±0.4 [.016] 2 PLC ±0.25 [.010] 3 PLC ± 4 PLC ±	APVD 22FEB2018 ALEXANDER SHARPE	NAME SWITCH, PUSHBUTTON, FLAT CAP NO LED, FLYING LEADS WITH HEAT SHRINK, SEALED, OFF-(ON) AND ON-(OFF)
MATERIAL	FINISH	PRODUCT SPEC	SIZE CAGE CODE DRAWING NO RESTRICTED TO
		APPLICATION SPEC	A200779 C-2329386
		WEIGHT	SCALE 3:2 SHEET 3 OF 3 REV 2
		CUSTOMER DRAWING	

DWN 22FEB2018 RAVI.S
CHK 22FEB2018 ALEXANDER SHARPE
APVD 22FEB2018 ALEXANDER SHARPE

STE TE Connectivity