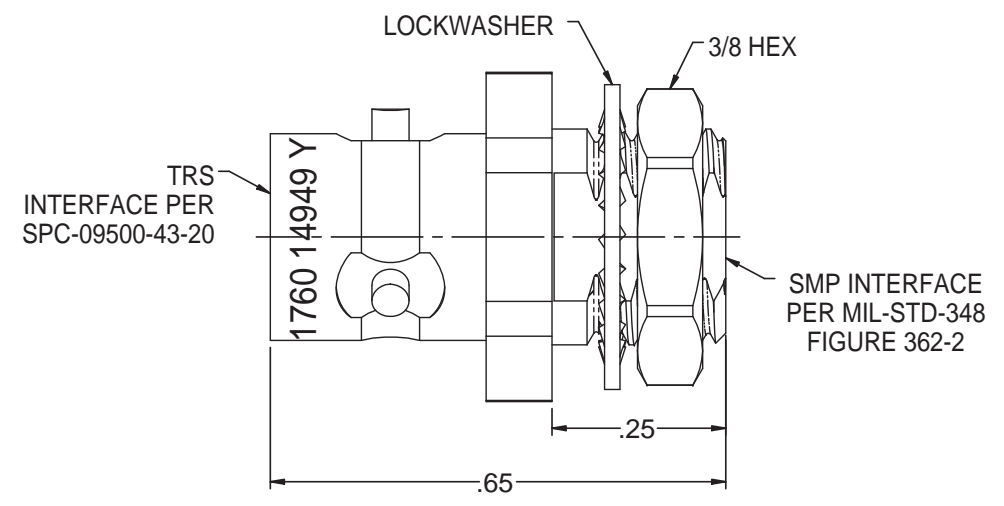
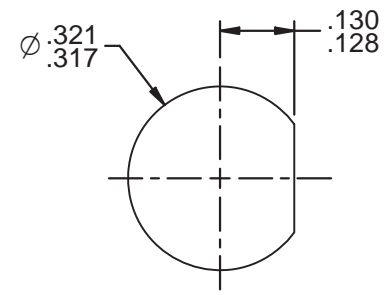


UNRELEASED ECO  
 ECO 56907  
 REV 001  
 NOVEMBER 28, 2017  
 C.MONAHAN

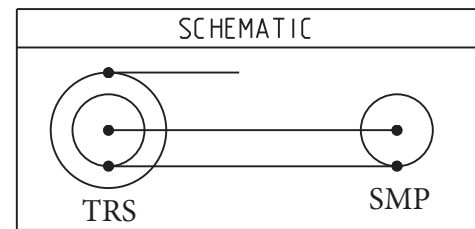


NOTES: UNLESS OTHERWISE SPECIFIED:

1. MATERIAL AND FINISH:
  - 1.1 BODY: NICKEL PLATED BRASS
  - 1.2 INSULATOR: PTFE (TEFLON)
  - 1.3 INTERMEDIATE CONTACT: GOLD PLATED BRASS
  - 1.4 DIELECTRIC: PTFE (TEFLON)
  - 1.5 CENTER CONTACT: GOLD PLATED BRASS
  - 1.6 MOUNTING HARDWARE: NICKEL BRASS ALLOY
2. ELECTRICAL:
  - 2.1 FREQUENCY (MAX): 500 MHZ
  - 2.2 IMPEDANCE: NON-CONSTANT.
3. PANEL THICKNESS (MAX): .10
4. PANEL NUT TORQUE (MAX): 25 INCH POUNDS



RECOMMENDED  
PANEL CUTOUT



<p>This PROPRIETARY Document is property of Cinch Connectivity Solutions. It is confidential in nature, non-transferable, and issued with the clear understanding that it is not traced or copied without permission and is returnable upon demand.</p> <p>INTERPRET DRAWING IN ACCORDANCE WITH ASME Y14.5-2009.</p>	<p>3RD ANGLE PROJECTION</p> <p>RoHS2 <input checked="" type="checkbox"/> 2011/65/EU</p> <p>UNLESS OTHERWISE SPECIFIED UNITS: INCH</p> <p>.XX ±.02</p> <p>.XXX ±.010</p> <p>ANGLES ±2°</p>	<p><b>TROMPETER</b></p> <p>Title: TRS TO SMP BULKHEAD ADAPTER</p>	
		<p>Model No. 3-0350</p>	
<p>Size A</p>	<p>DO NOT SCALE DRAWING</p>	<p>Date:</p>	<p>Sheet 1 OF 1</p>