

REVISIONS					
P	LTR	DESCRIPTION	DATE	DWN	APVD
	1	NEW DRAWING	07MAR2018	GCM	AS

D

C

B

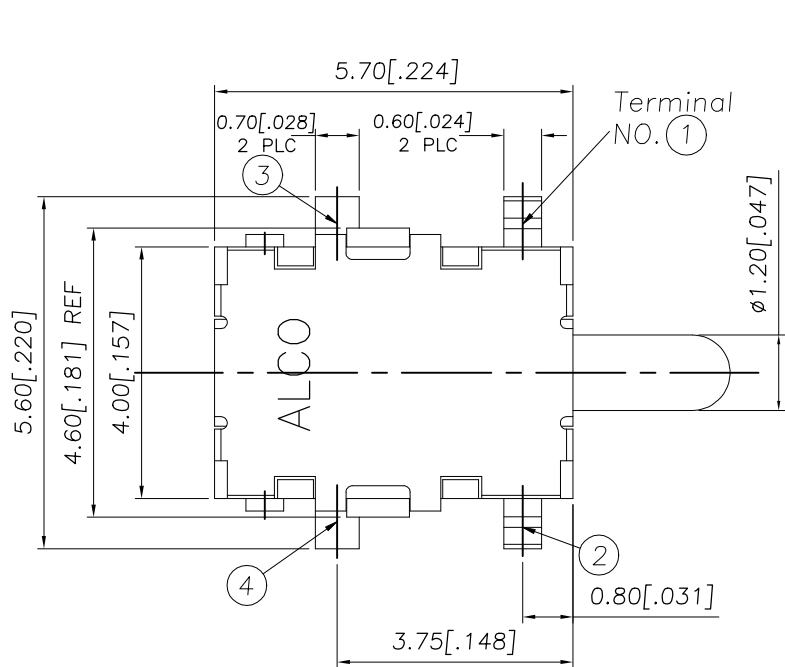
A

D

C

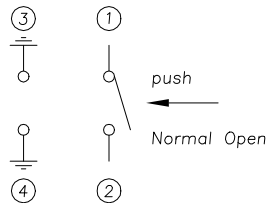
B

A

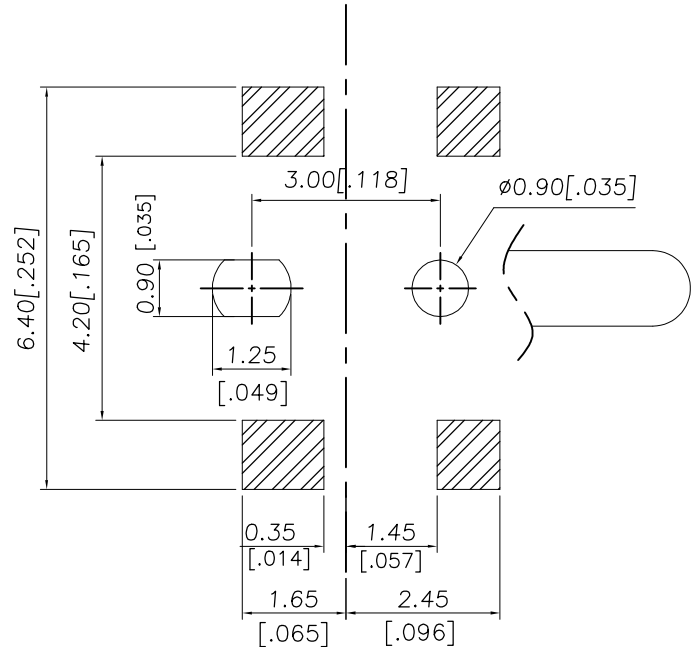


2331392-1
AS SHOWN

CIRCUIT DIAGRAM

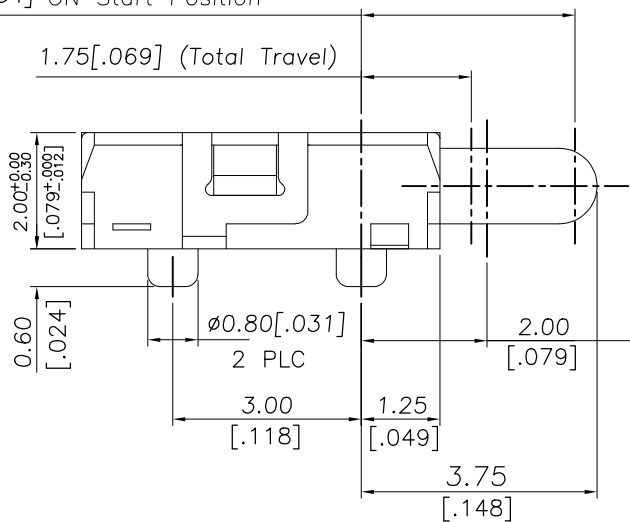


P.C.B LAYOUT

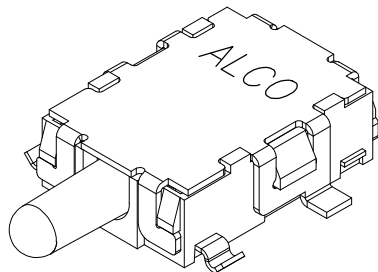
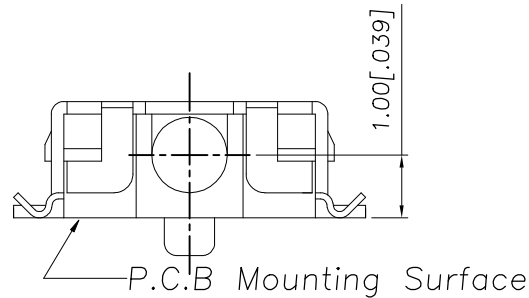


3.40[.134] ON Start Position

1.75[.069] (Total Travel)



Contact resistance & operating force
measurement position



PRELIMINARY

THIS DRAWING IS A CONTROLLED DOCUMENT.		DWN GANESH C M 07MAR2018	TE Connectivity Ltd.		
		CHK ALEXANDER SHARPE 07MAR2018			
		APVD ALEXANDER SHARPE 07MAR2018	NAME SWITCH, DETECTOR, JJH SERIES, 5.7X4.0mm, HORIZONTAL, SMT, POSTS		
		PRODUCT SPEC —			
		APPLICATION SPEC —			
		WEIGHT —			
		CUSTOMER DRAWING	SIZE A3	CAGE CODE 00779	DRAWING NO C-2331392
			SCALE NTS	SHEET 1 of 3	REV 1

4

3

2

1

THIS DRAWING IS UNPUBLISHED.

RELEASED FOR PUBLICATION

© COPYRIGHT – TE Connectivity Ltd.

ALL RIGHTS RESERVED.

REVISIONS

P	LTR	DESCRIPTION	DATE	DWN	APVD
	–	SEE SHEET 1	–	–	–

NOTES:

1. MATERIALS

ACTUATOR: THERMOPLASTIC, UL 94V–0, BLACK

BODY: THERMOPLASTIC, UL 94V–0, WHITE

COVER: STAINLESS STEEL, SILVER PLATE

TERMINAL: COPPER ALLOY, SILVER PLATE

SPRING: STAINLESS STEEL

CONTACT: STAINLESS STEEL, SILVER PLATE

2. COMPLIANCE:

ALL MATERIALS AND FINISHES SHALL COMPLY WITH EU DIRECTIVE 2002/95/EC OF 27JAN2003(RoHS)

3. SPECIFICATIONS:

RATING: 1mA 5V DC

CONTACT RESISTANCE: 1Ω MAXIMUM(INITIAL)

INSULATION RESISTANCE: 100MΩ MINIMUM AT 100 V DC

DIELECTRIC STRENGTH: 100 V AC, 1 MINUTE

OPERATING LIFE: 100,000 CYCLES WITH LOAD

TOTAL TRAVEL: 2.00 [.079]

ACTUATION FORCE: 150gf MAXIMUM

OPERATING TEMPERATURE: –10°C TO 60° C

STORAGE TEMPERATURE: –20°C TO 70° C

4. SOLDER CONDITIONS

SMT

MAX 260°

255°

230°

150°

ROOM TEMPERATURE

120 TO 150

60

5 TO 10

TIME(SECONDS)

THE CONDITION MENTIONED ABOVE IS THE TEMPERATURE ON THE CU FOIL OF THE PCB SURFACE. THERE ARE CASES WHERE THE BOARD’S TEMPERATURE GREATLY DIFFERS FROM THE SWITCH’S SURFACE. DO NOT ALLOW SWITCH’S SURFACE TEMPERATURE TO EXCEED 260°C

MANUAL SOLDERING

SOLDERING TEMPERATURE	MAX.350°C.
CONTINUOUS SOLDERING TIME	MAX. 5 SECONDS.

PRECAUTIONS IN HANDLING

1. CARE SHOULD BE EXERCISED SO THAT FLUX FROM THE UPPER PART OF THE PRINTED CIRCUIT BOARD DOES NOT ADHERE TO THE SWITCH.

JJHH0UG200NOPMRTR

2331392–1

SMART PART NUMBER

PART NUMBER

THIS DRAWING IS A CONTROLLED DOCUMENT.

DIMENSIONS:
mm [INCHES]

MATERIAL
–

TOLERANCES UNLESS OTHERWISE SPECIFIED:

0 PLC ± –

1 PLC ± –

2 PLC ± 0.20 [.008]

3 PLC ± –

4 PLC ± –

ANGLES ± –

FINISH
–

DWN 07MAR2018
GANESH C M

CHK 07MAR2018
ALEXANDER SHARPE

APVD 07MAR2018
ALEXANDER SHARPE

PRODUCT SPEC
–

APPLICATION SPEC
–

WEIGHT

CUSTOMER DRAWING

TE Connectivity Ltd.

NAME
SWITCH, DETECTOR, JJH SERIES, 5.7X4.0mm,
HORIZONTAL, SMT, POSTS

SIZE
A3

CAGE CODE
00779

DRAWING NO
C–2331392

RESTRICTED TO
–

SCALE
NTS

SHEET
2 of 3

REV
1

PRELIMINARY

1470–19 (1/15)

THIS DRAWING IS UNPUBLISHED.

RELEASED FOR PUBLICATION

© COPYRIGHT — TE Connectivity Ltd.

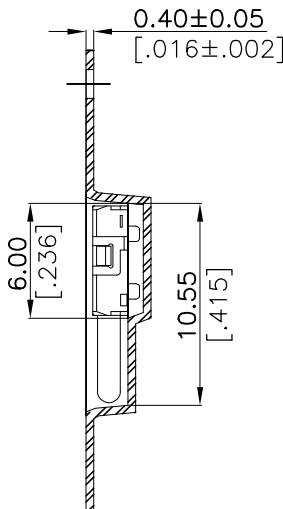
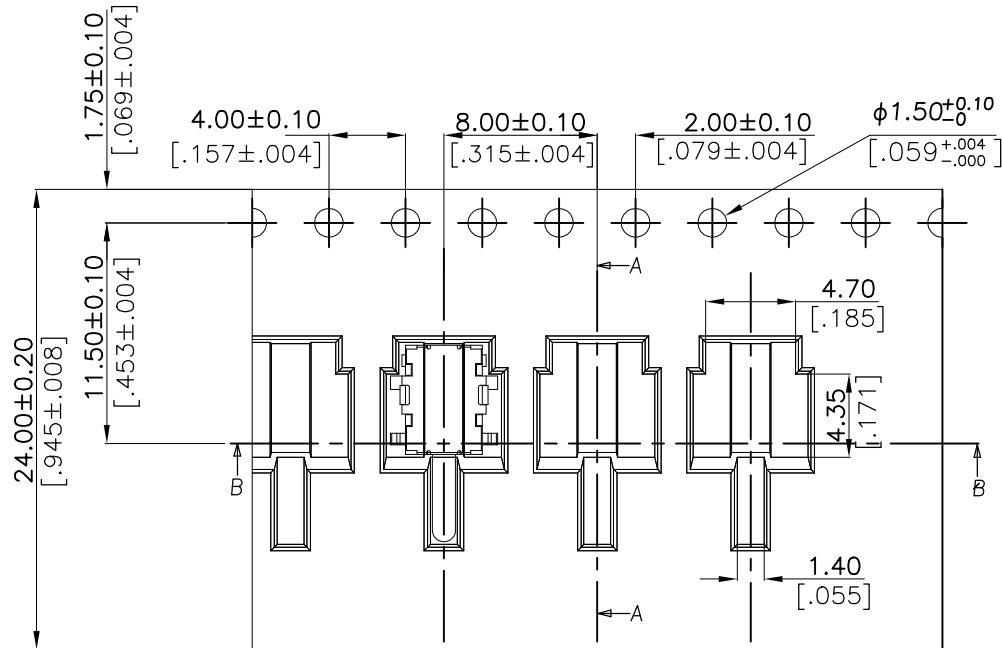
ALL RIGHTS RESERVED.

REVISIONS

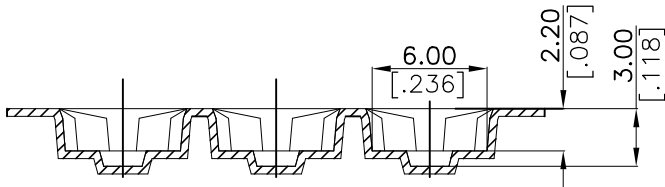
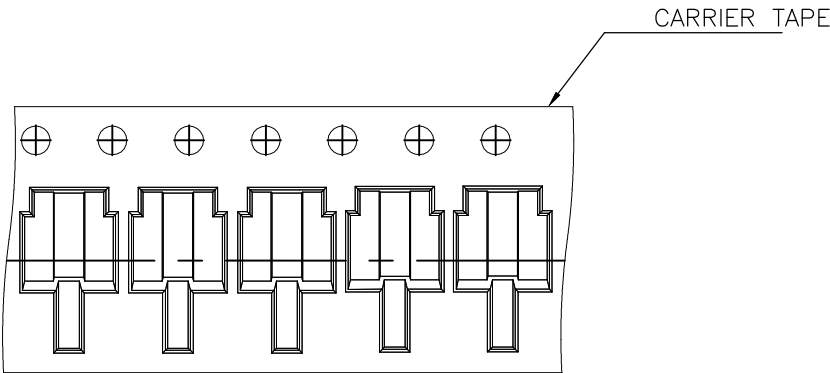
P	LTR	DESCRIPTION	DATE	DWN	APVD
	—	SEE SHEET 1	—	—	—

PACKAGING:
3000 SWITCHES PER REEL

THE DIMENSION OF CARRIER TAPE, COVER TAPE AND REEL



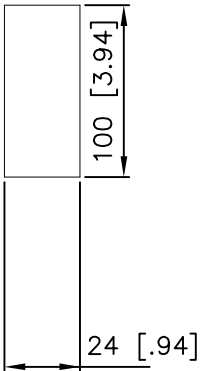
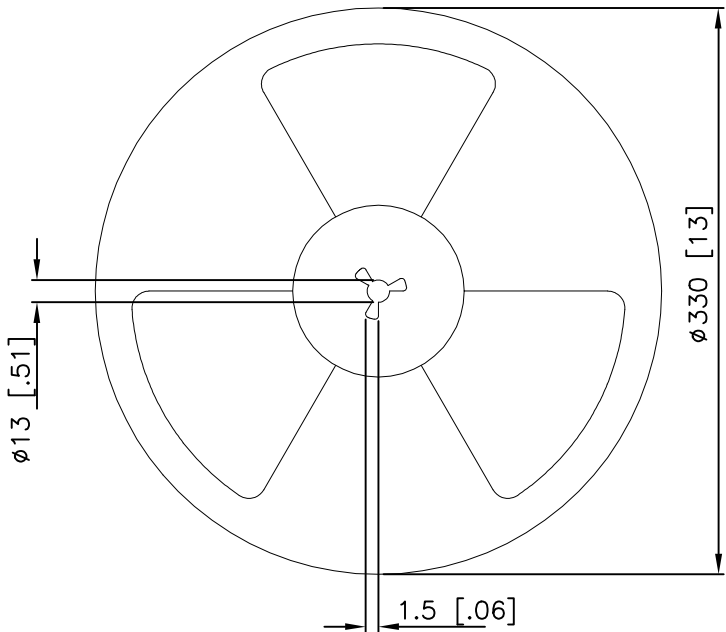
THE DIRECTION OF PILOT HOLES



Pulling-out direction of the tape


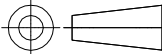
Section B—B

DRAWING DIRECTION



REEL

PRELIMINARY

THIS DRAWING IS A CONTROLLED DOCUMENT.		DWN 07MAR2018 GANESH C M		<div> TE Connectivity Ltd.</div>					
DIMENSIONS: mm [INCHES]		CHK 07MAR2018 ALEXANDER SHARPE							
		APVD 07MAR2018 ALEXANDER SHARPE		NAME SWITCH, DETECTOR, JJH SERIES, 5.7X4.0mm, HORIZONTAL, SMT, POSTS —					
		PRODUCT SPEC —							
		APPLICATION SPEC —							
		WEIGHT							
TOLERANCES UNLESS OTHERWISE SPECIFIED:		0 PLC ± — 1 PLC ± — 2 PLC ± 0.20 [.008] 3 PLC ± — 4 PLC ± — ANGLES ± —		SIZE	CAGE CODE	DRAWING NO	RESTRICTED TO		
MATERIAL —		FINISH —		A3	00779	C-2331392	—		
CUSTOMER DRAWING				SCALE	NTS	SHEET	3 OF 3	REV	1