

D

B

C

B

A

D

B

C

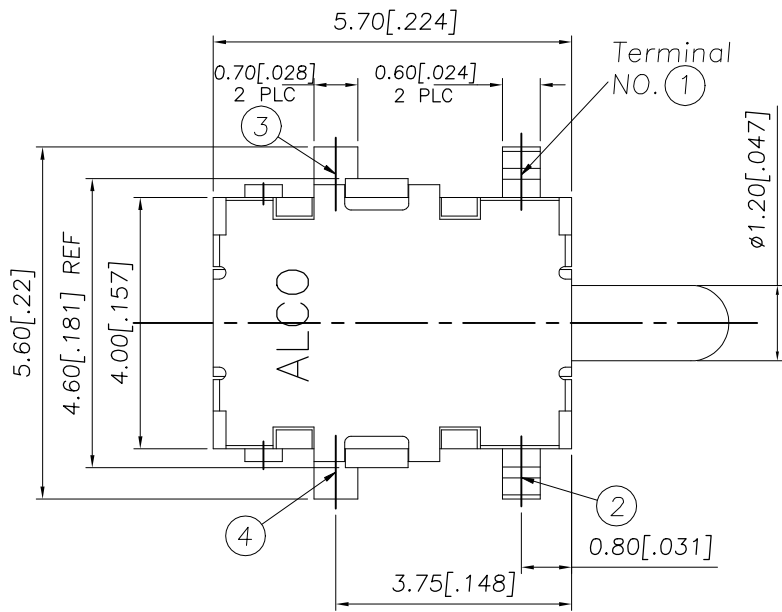
B

A

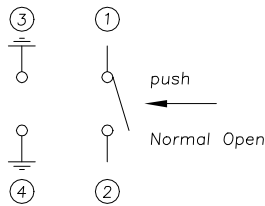
THIS DRAWING IS UNPUBLISHED.	RELEASED FOR PUBLICATION
© COPYRIGHT — TE Connectivity Ltd.	ALL RIGHTS RESERVED.

REVISIONS				
P	LTR	DESCRIPTION	DATE	DWN
1		NEW DRAWING	07MAR2018	GCM

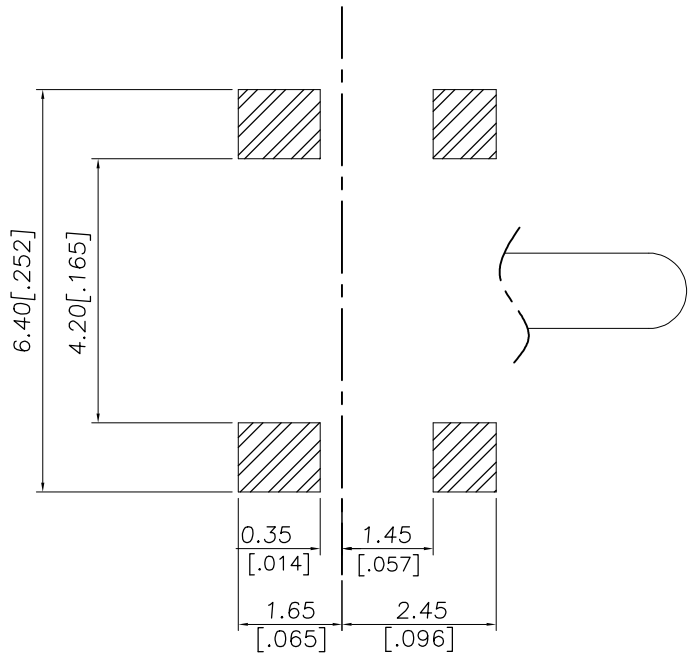
2331393-1  
AS SHOWN



CIRCUIT DIAGRAM

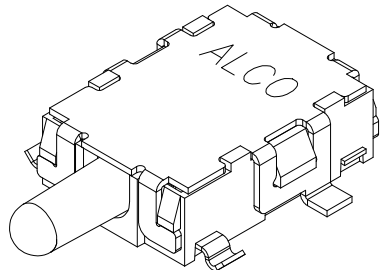
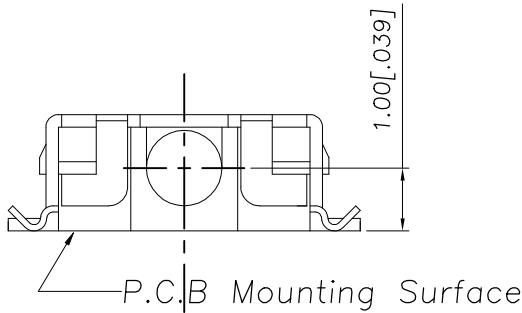
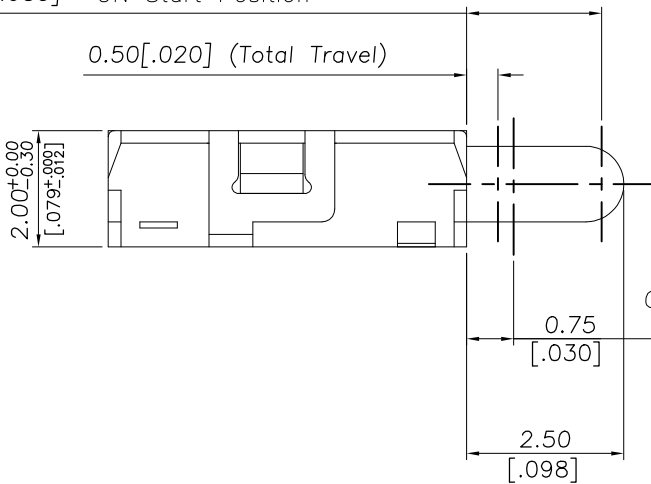


P.C.B LAYOUT


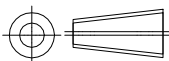


2.15 [.085] ON Start Position

0.50 [.020] (Total Travel)



PRELIMINARY

THIS DRAWING IS A CONTROLLED DOCUMENT.		DWN GANESH C M	07MAR2018	 TE Connectivity Ltd.	
DIMENSIONS: mm [INCHES]		CHK ALEXANDER SHARPE	07MAR2018		
		APVD ALEXANDER SHARPE	07MAR2018	NAME SWITCH, DETECTOR, JJH SERIES, 5.7X4.0mm, HORIZONTAL, SMT	
		PRODUCT SPEC			
MATERIAL -		APPLICATION SPEC		SIZE A3	CAGE CODE 00779
		WEIGHT		DRAWING NO C-2331393	RESTRICTED TO -
FINISH -		CUSTOMER DRAWING		SCALE NTS	SHEET 1 OF 3
				REV 1	

D

C

B

A

THIS DRAWING IS UNPUBLISHED.	RELEASED FOR PUBLICATION
© COPYRIGHT — TE Connectivity Ltd.	ALL RIGHTS RESERVED.

NOTES:

1. MATERIALS

ACTUATOR: THERMOPLASTIC, UL 94V-0, BLACK  
BODY: THERMOPLASTIC, UL 94V-0, WHITE  
COVER: STAINLESS STEEL, SILVER PLATE  
TERMINAL: COPPER ALLOY, SILVER PLATE  
SPRING: STAINLESS STEEL  
CONTACT: STAINLESS STEEL, SILVER PLATE

2. COMPLIANCE:

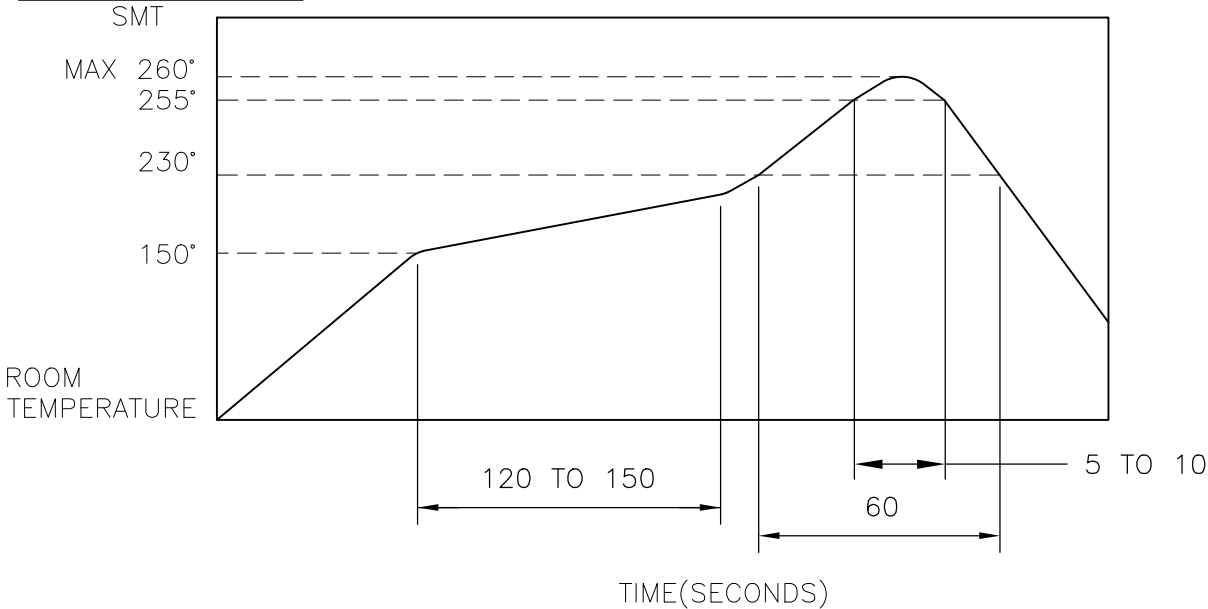
ALL MATERIALS AND FINISHES SHALL COMPLY WITH EU  
DIRECTIVE 2002/95/EC OF 27JAN2003(RoHS)

3. SPECIFICATIONS:

RATING: 1mA 5V DC  
CONTACT RESISTANCE: 1Ω MAXIMUM(INITIAL)  
INSULATION RESISTANCE: 100MΩ MINIMUM AT 100V DC  
DIELECTRIC STRENGTH: 100V AC, 1 MINUTE  
OPERATING LIFE: 100,000 CYCLES WITH LOAD  
TOTAL TRAVEL: 2.00 [.079]  
ACTUATION FORCE: 150gf MAXIMUM  
OPERATING TEMPERATURE: -10°C TO 60° C  
STORAGE TEMPERATURE: -20°C TO 70° C

2

4. SOLDER CONDITIONS:



THE CONDITION MENTIONED ABOVE IS THE TEMPERATURE ON THE CU FOIL OF THE  
PCB SURFACE. THERE ARE CASES WHERE THE BOARD'S TEMPERATURE GREATLY DIFFERS  
FROM THE SWITCH'S SURFACE. DO NOT ALLOW SWITCH'S SURFACE TEMPERATURE TO  
EXCEED 260°C

MANUAL SOLDERING

SOLDERING TEMPERATURE	MAX.350°C.
CONTINUOUS SOLDERING TIME	MAX. 5 SECONDS.

PRECAUTIONS IN HANDLING

1. CARE SHOULD BE EXERCISED SO THAT FLUX FROM THE UPPER PART OF THE  
PRINTED CIRCUIT BOARD DOES NOT ADHERE TO THE SWITCH.

JJHH0UG200NONMRTR	2331393-1
SMART PART NUMBER	PART NUMBER

PRELIMINARY

THIS DRAWING IS A CONTROLLED DOCUMENT.		DWN 07MAR2018 GANESH C M	TE Connectivity Ltd.			
DIMENSIONS: mm [INCHES]		CHK 07MAR2018 ALEXANDER SHARPE				
		APVD 07MAR2018 ALEXANDER SHARPE	NAME SWITCH, DETECTOR, JJH SERIES, 5.7X4.0mm, HORIZONTAL, SMT			
		PRODUCT SPEC —				
MATERIAL —		APPLICATION SPEC —	SIZE A3			
		WEIGHT —	CAGE CODE 00779			
FINISH —		CUSTOMER DRAWING	DRAWING NO 2331393		RESTRICTED TO —	
			SCALE NTS		SHEET 2 of 3	REV 1

D

C

B

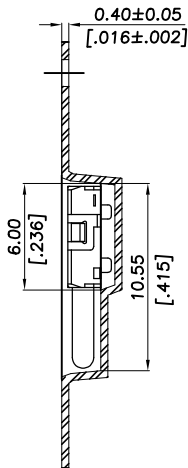
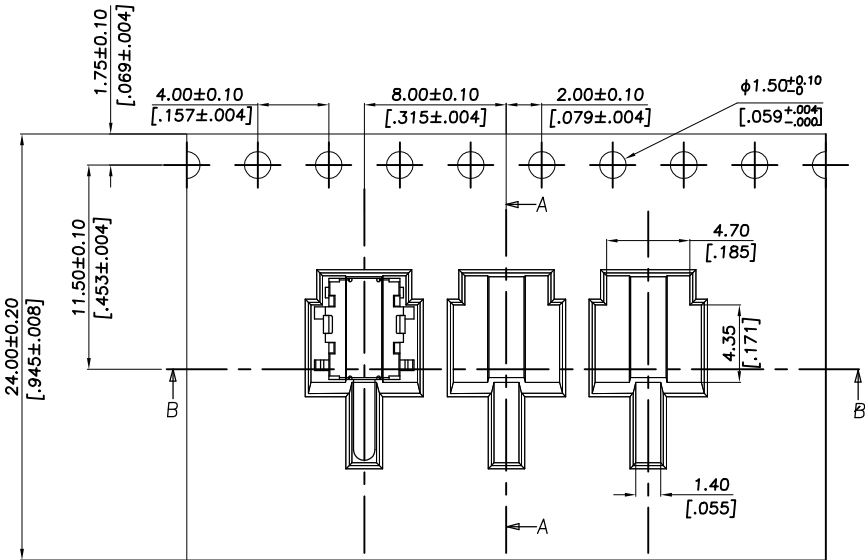
A

REVISIONS					
P	LTR	DESCRIPTION	DATE	DWN	APVD
	—	SEE SHEET 1	—	—	—

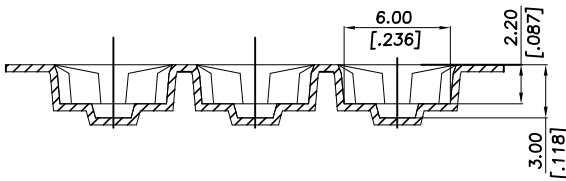
PACKAGING:

3000 SWITCHES PER REEL

THE DIMENSION OF CARRIER TAPE, COVER TAPE AND REEL

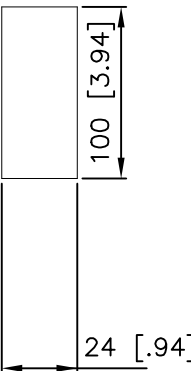
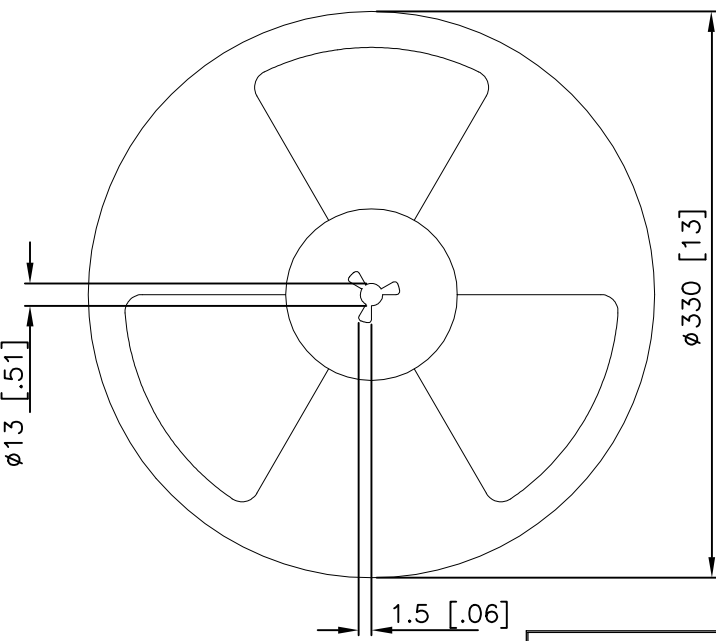


Section A-A

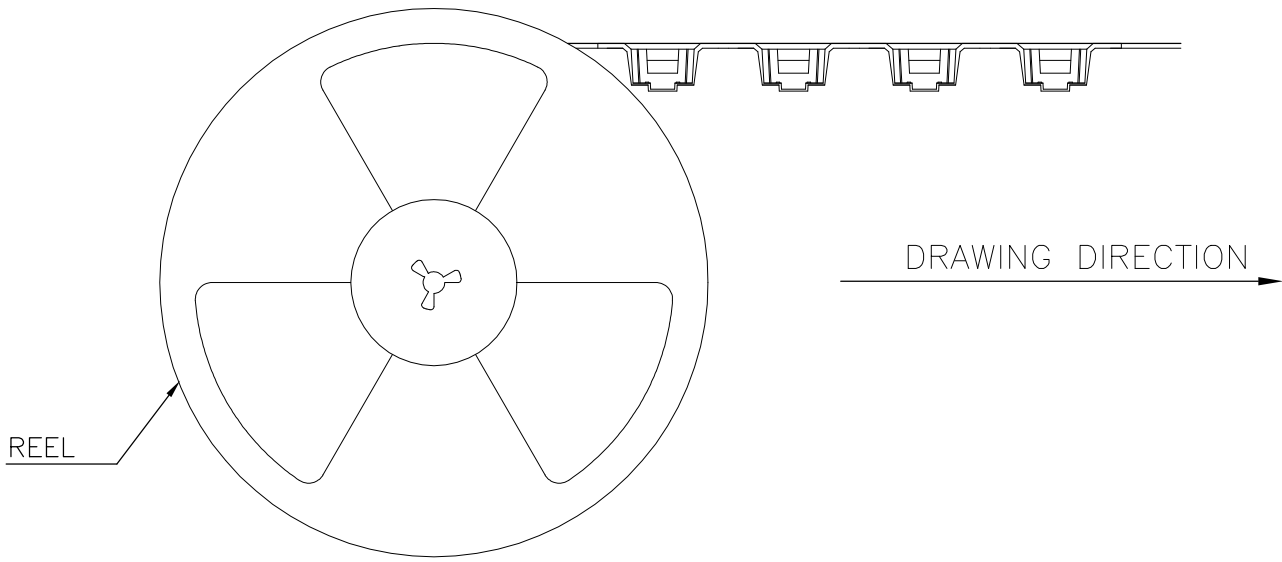
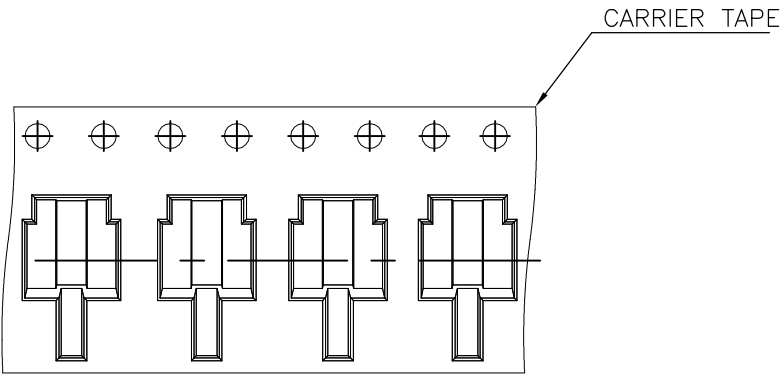


Section B-B

Pulling-out direction of the tape




THE DIRECTION OF PILOT HOLES



DRAWING DIRECTION

PRELIMINARY

THIS DRAWING IS A CONTROLLED DOCUMENT.		DWN 07MAR2018 GANESH C M	 TE Connectivity Ltd.		
DIMENSIONS: mm [INCHES]		CHK 07MAR2018 ALEXANDER SHARPE			
TOLERANCES UNLESS OTHERWISE SPECIFIED:		APVD 07MAR2018 ALEXANDER SHARPE	NAME SWITCH, DETECTOR, JJH SERIES, 5.7X4.0mm, HORIZONTAL, SMT		
0 PLC ± — 1 PLC ± — 2 PLC ± 0.20 [.008] 3 PLC ± — 4 PLC ± — ANGLES ± —		PRODUCT SPEC — APPLICATION SPEC — WEIGHT	SIZE A3		
MATERIAL —		FINISH —	CAGE CODE 00779		
			DRAWING NO 2331393		
			RESTRICTED TO —		
			SCALE NTS		
			SHEET 3 of 3		
			REV 1		
			CUSTOMER DRAWING		