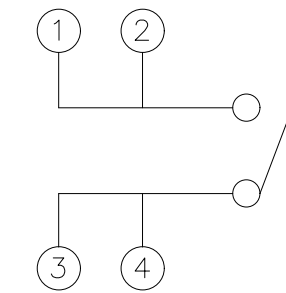
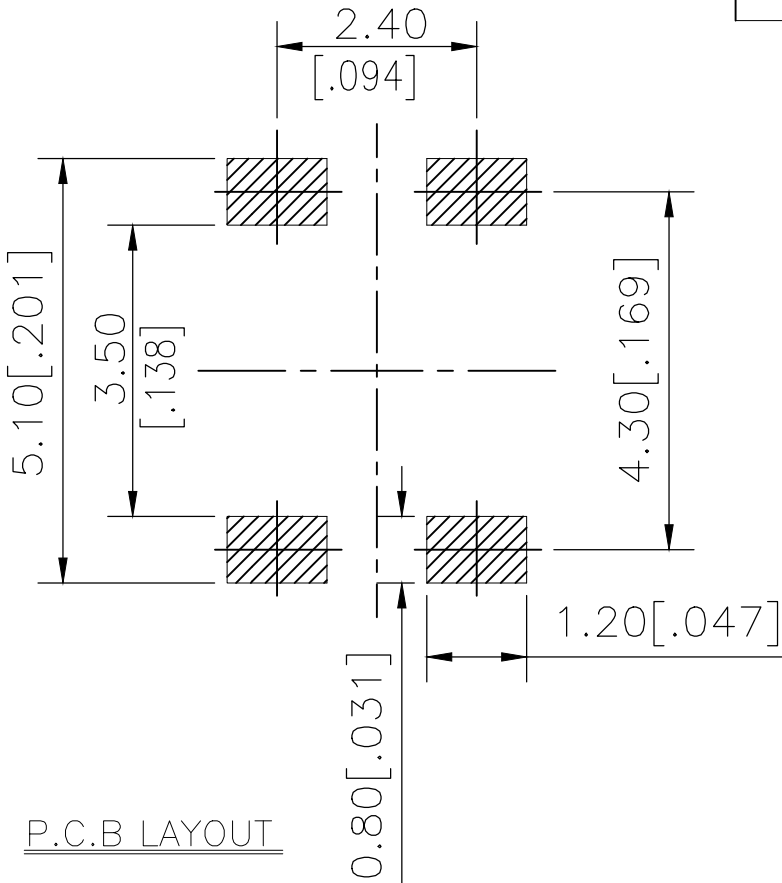
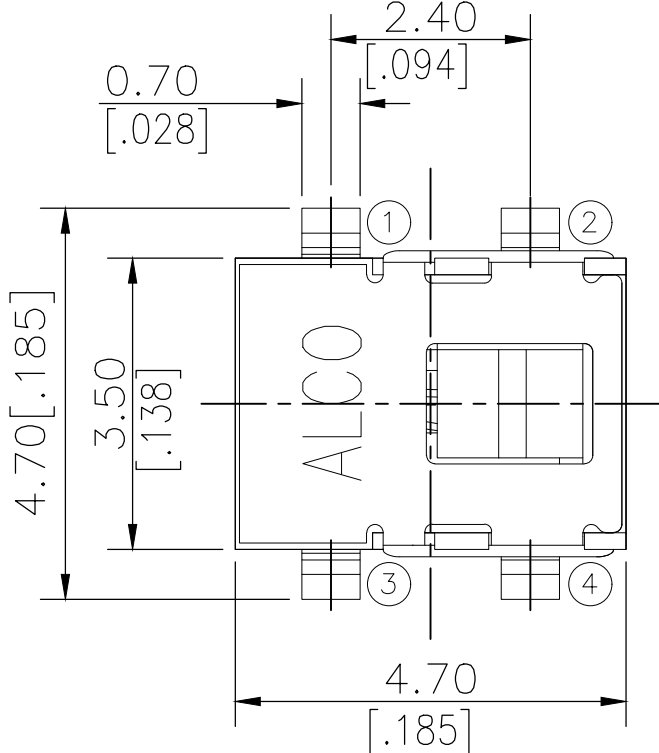
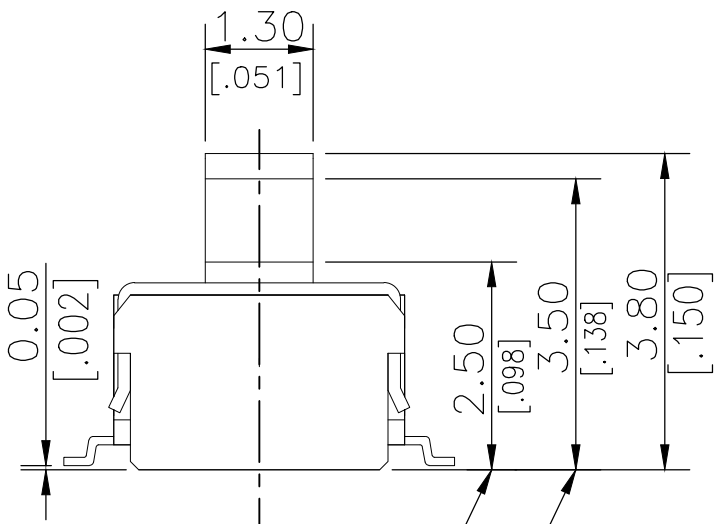
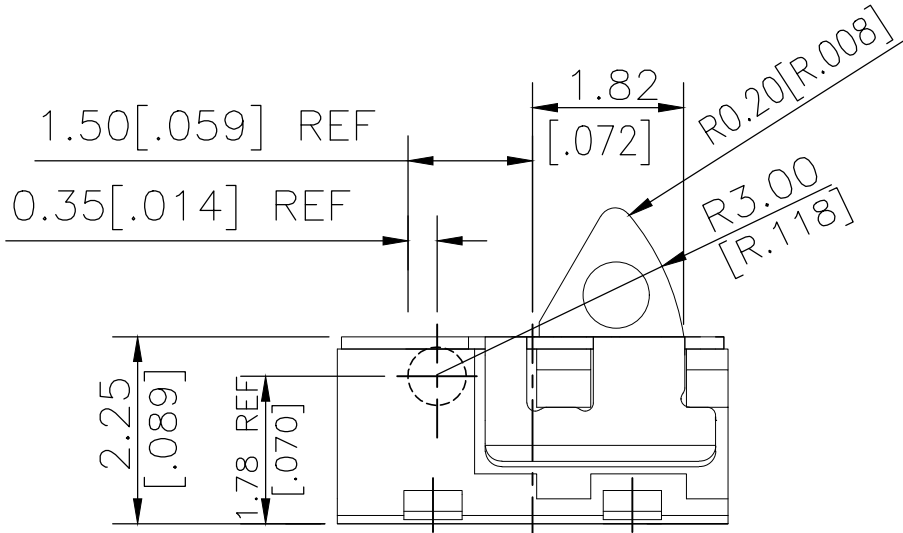


REVISIONS					
P	LTR	DESCRIPTION	DATE	DWN	APVD
	1	NEW DRAWING	07MAR2018	GCM	AS

2331395-1
AS SHOWN


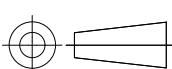


CIRCUIT DIAGRAM



ON starting position
Total travel position

PRELIMINARY

THIS DRAWING IS A CONTROLLED DOCUMENT.		DWN	07MAR2018		<div>TE Connectivity Ltd.</div>	
		CHK	07MAR2018			
		ALEXANDER SHARPE				
		APVD	07MAR2018			
		ALEXANDER SHARPE		NAME		
DIMENSIONS: mm [INCHES]		TOLERANCES UNLESS OTHERWISE SPECIFIED:		SWITCH, DETECTOR, JJE SERIES, 4.7X3.5mm, VERTICAL, SMT		
		0 PLC ± -		—		
		1 PLC ± -				
		2 PLC ± 0.20 [.008]				
		3 PLC ± -				
MATERIAL		4 PLC ± -		SIZE		
		ANGLES ± -				
		FINISH		CAGE CODE		
				DRAWING NO		
				RESTRICTED TO		
				—		
				SCALE		
				SHEET		
				REV		
				1 OF 3		
				CUSTOMER DRAWING		
				1		

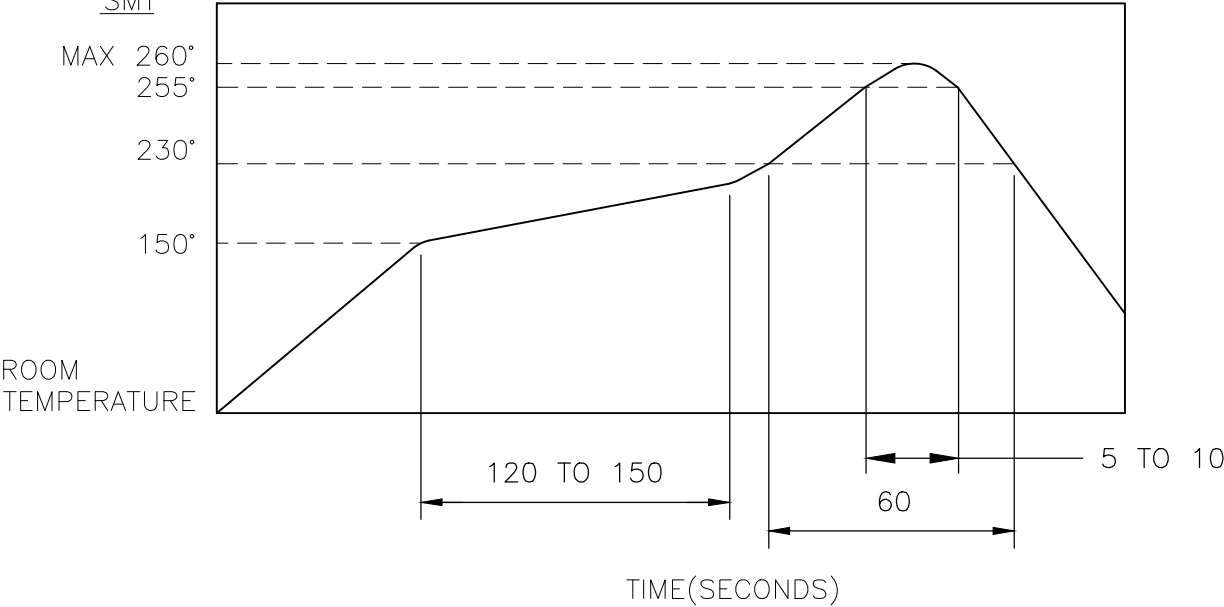
THIS DRAWING IS UNPUBLISHED.	RELEASED FOR PUBLICATION
COPYRIGHT - TE Connectivity Ltd.	ALL RIGHTS RESERVED.

REVISIONS					
P	LTR	DESCRIPTION	DATE	DWN	APVD
	-	SEE SHEET 1	-	-	-

NOTES:

1. MATERIALS
ACTUATOR: THERMOPLASTIC, BLACK
BODY: THERMOPLASTIC, BLACK
COVER: STAINLESS STEEL
TERMINAL: COPPER ALLOY, SILVER PLATE
CONTACT: STAINLESS STEEL, SILVER PLATE
2. COMPLIANCE:
ALL MATERIALS AND FINISHES SHALL COMPLY WITH EU
DIRECTIVE 2002/95/EC OF 27JAN2003(RoHS)
3. SPECIFICATIONS:
RATING: 10mA 5V DC
CONTACT RESISTANCE: 1Ω MAXIMUM(INITIAL)
INSULATION RESISTANCE: 100MΩ MINIMUM AT 100 V DC
DIELECTRIC STRENGTH: 100 V AC, 1 MINUTE
OPERATING LIFE: 100,000 CYCLES WITH LOAD
TOTAL TRAVEL: 1.30 [.051]
ACTUATION FORCE: 36gf MAXIMUM
OPERATING TEMPERATURE: -40°C TO 85° C
STORAGE TEMPERATURE: -40°C TO 85° C

4. SOLDER CONDITIONS:
SMT



THE CONDITION MENTIONED ABOVE IS THE TEMPERATURE ON THE CU FOIL OF THE PCB SURFACE. THERE ARE CASES WHERE THE BOARD’S TEMPERATURE GREATLY DIFFERS FROM THE SWITCH’S SURFACE. DO NOT ALLOW SWITCH’S SURFACE TEMPERATURE TO EXCEED 260°C

MANUAL SOLDERING


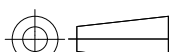
SOLDERING TEMPERATURE	MAX.350°C.
CONTINUOUS SOLDERING TIME	MAX. 5 SECONDS.

PRECAUTIONS IN HANDLING

1. CARE SHOULD BE EXERCISED SO THAT FLUX FROM THE UPPER PART OF THE PRINTED CIRCUIT BOARD DOES NOT ADHERE TO THE SWITCH.

JJEV0UG380NOHNMRT	2331395-1
SMART PART NUMBER	PART NUMBER

PRELIMINARY

THIS DRAWING IS A CONTROLLED DOCUMENT.		DWN GANESH C M 07MAR2018	 TE Connectivity Ltd.				
		CHK ALEXANDER SHARPE 07MAR2018					
DIMENSIONS: mm [INCHES]	TOLERANCES UNLESS OTHERWISE SPECIFIED:	APVD ALEXANDER SHARPE 07MAR2018	NAME SWITCH, DETECTOR, JJE SERIES, 4.7X3.5mm, VERTICAL, SMT —				
	0 PLC ± —	PRODUCT SPEC —	SIZE		CAGE CODE	DRAWING NO	RESTRICTED TO
	1 PLC ± —	APPLICATION SPEC —	A3		00779	C-2331395	—
	2 PLC ± 0.20 [.008]	WEIGHT					
3 PLC ± —							
4 PLC ± —							
ANGLES ± —							
MATERIAL —	FINISH —						
CUSTOMER DRAWING			SCALE NTS	SHEET 2 OF 3	REV 1		

PRELIMINARY