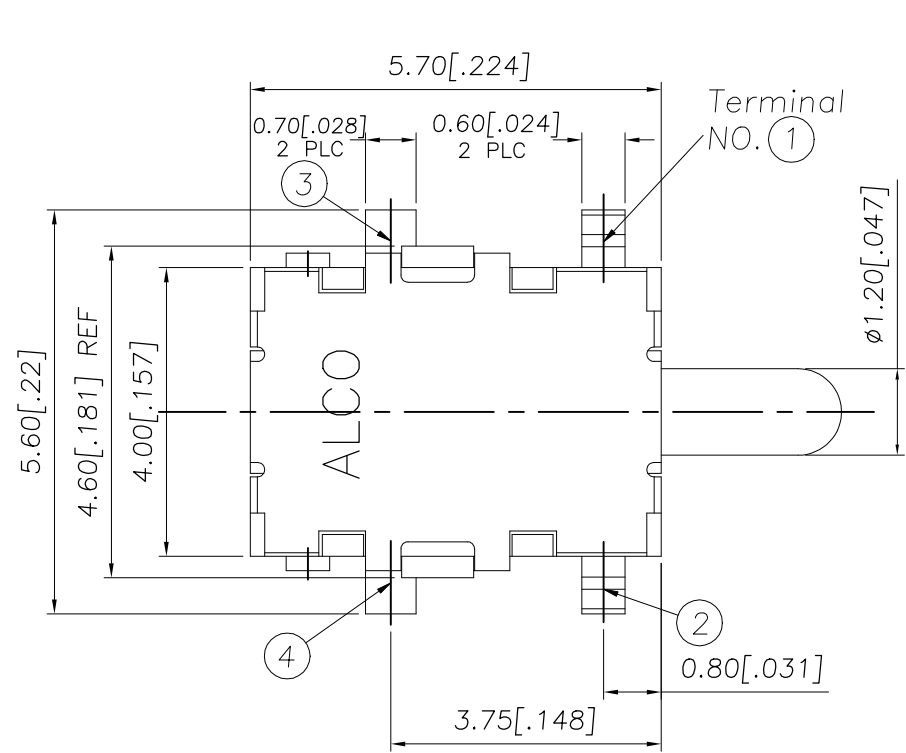
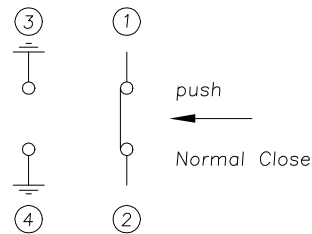


D

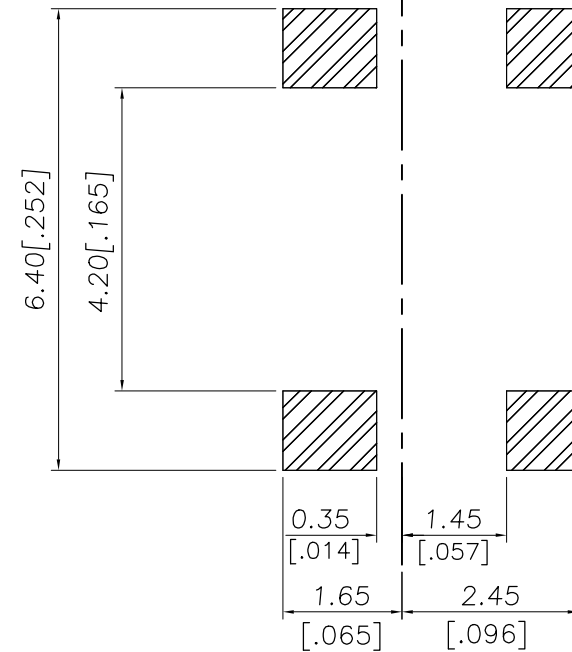
D



CIRCUIT DIAGRAM

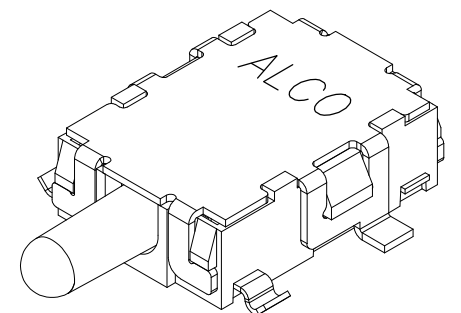
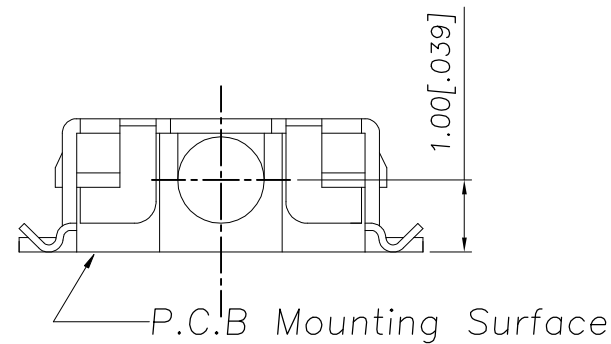
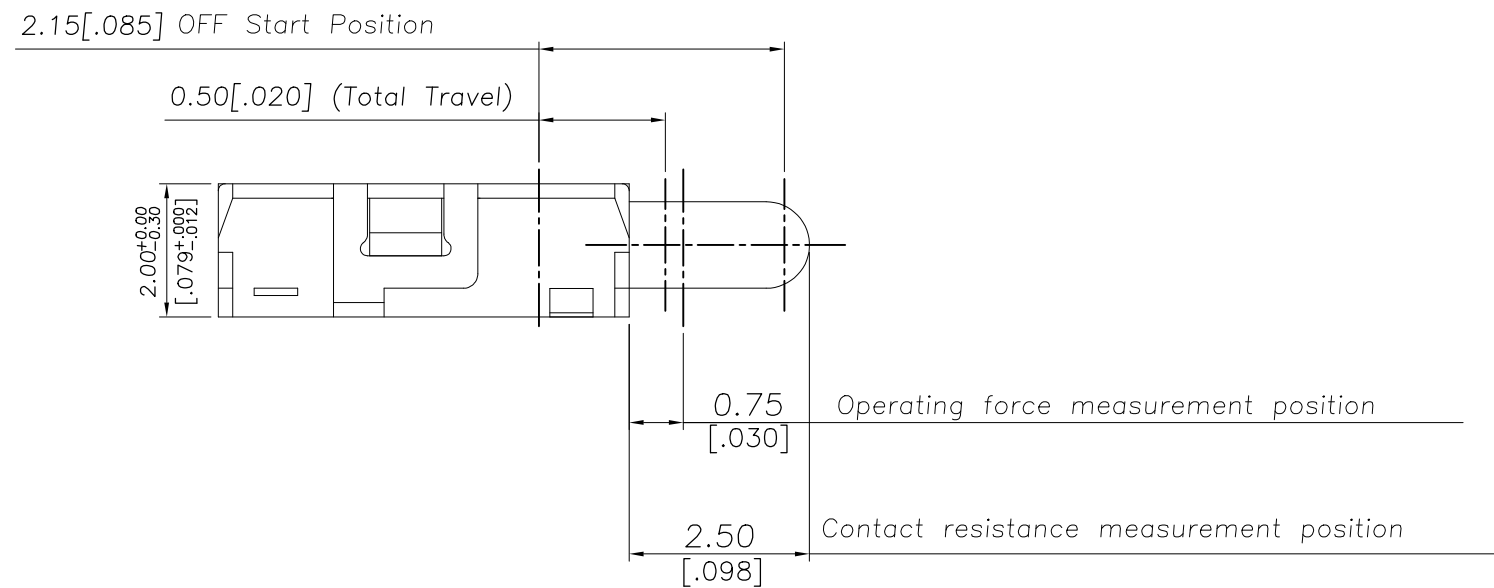


P.C.B LAYOUT



C

C



B

B

A

A

PRELIMINARY

THIS DRAWING IS A CONTROLLED DOCUMENT.		DWN GANESH C M 07MAR2018	TE Connectivity Ltd.		
		CHK ALEXANDER SHARPE 07MAR2018			
		APVD ALEXANDER SHARPE 07MAR2018	NAME SWITCH, DETECTOR, JJH SERIES, 5.7X4.0mm, HORIZONTAL, SMT		
		PRODUCT SPEC			
		APPLICATION SPEC			
		WEIGHT			
		CUSTOMER DRAWING			
		SCALE NTS	SHEET 1 of 3		REV 1

DIMENSIONS:	TOLERANCES UNLESS OTHERWISE SPECIFIED:
mm [INCHES]	
	0 PLC ± -
	1 PLC ± -
	2 PLC ± 0.20 [.008]
	3 PLC ± -
	4 PLC ± -
	ANGLES ± -
MATERIAL	FINISH
-	-

SIZE	CAGE CODE	DRAWING NO	RESTRICTED TO
A3	00779	C-2331391	-

4

3

2

1

THIS DRAWING IS UNPUBLISHED.

RELEASED FOR PUBLICATION

ALL RIGHTS RESERVED.

TE Connectivity Ltd.

REVISIONS

P	LTR	DESCRIPTION	DATE	DWN	APVD
	—	SEE SHEET 1	—	—	—

NOTES:

1. MATERIALS

ACTUATOR: THERMOPLASTIC, UL 94V-0, BLACK

BODY: THERMOPLASTIC, UL 94V-0, BLACK

COVER: STAINLESS STEEL, SILVER PLATE

TERMINAL: COPPER ALLOY, SILVER PLATE

SPRING: STAINLESS STEEL

CONTACT: STAINLESS STEEL, SILVER PLATE

2. COMPLIANCE:

ALL MATERIALS AND FINISHES SHALL COMPLY WITH EU DIRECTIVE 2002/95/EC OF 27JAN2003(RoHS)

3. SPECIFICATIONS:

RATING: 1mA 5V DC

CONTACT RESISTANCE: 1Ω MAXIMUM(INITIAL)

INSULATION RESISTANCE: 100MΩ MINIMUM AT 100V DC

DIELECTRIC STRENGTH: 100V AC, 1 MINUTE

OPERATING LIFE: 100,000 CYCLES WITH LOAD

TOTAL TRAVEL: 2.00 [.079]

ACTUATION FORCE: 150gf MAXIMUM

OPERATING TEMPERATURE: -10°C TO 60° C

STORAGE TEMPERATURE: -20°C TO 70° C

4. SOLDER CONDITIONS:

SMT

MAX 260°

255°

230°

150°

ROOM TEMPERATURE

120 TO 150

60

5 TO 10

TIME(SECONDS)

THE CONDITION MENTIONED ABOVE IS THE TEMPERATURE ON THE CU FOIL OF THE PCB SURFACE. THERE ARE CASES WHERE THE BOARD'S TEMPERATURE GREATLY DIFFERS FROM THE SWITCH'S SURFACE. DO NOT ALLOW SWITCH'S SURFACE TEMPERATURE TO EXCEED 260°C

MANUAL SOLDERING

SOLDERING TEMPERATURE	MAX.350°C.
CONTINUOUS SOLDERING TIME	MAX. 5 SECONDS.

PRECAUTIONS IN HANDLING

1. CARE SHOULD BE EXERCISED SO THAT FLUX FROM THE UPPER PART OF THE PRINTED CIRCUIT BOARD DOES NOT ADHERE TO THE SWITCH.

JJHH0UG200NCNMRTR

2331391-1

SMART PART NUMBER

PART NUMBER

THIS DRAWING IS A CONTROLLED DOCUMENT.

DIMENSIONS:
mm [INCHES]

MATERIAL

TOLERANCES UNLESS OTHERWISE SPECIFIED:

0 PLC ± -

1 PLC ± -

2 PLC ± 0.20 [.008]

3 PLC ± -

4 PLC ± -

ANGLES ± -

FINISH

DWN 07MAR2018

CHK 07MAR2018

APVD 07MAR2018

PRODUCT SPEC

APPLICATION SPEC

WEIGHT

CUSTOMER DRAWING

TE

TE Connectivity Ltd.

NAME

SWITCH, DETECTOR, JJH SERIES, 5.7X4.0mm, HORIZONTAL, SMT

SIZE

CAGE CODE

DRAWING NO

RESTRICTED TO

A300779

2331391

SCALE NTS

SHEET 2 of 3

REV 1

PRELIMINARY

1470-19 (1/15)

THIS DRAWING IS UNPUBLISHED.

RELEASED FOR PUBLICATION

© COPYRIGHT - TE Connectivity Ltd.

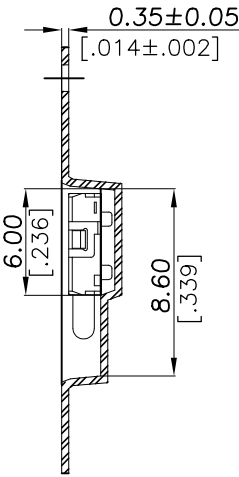
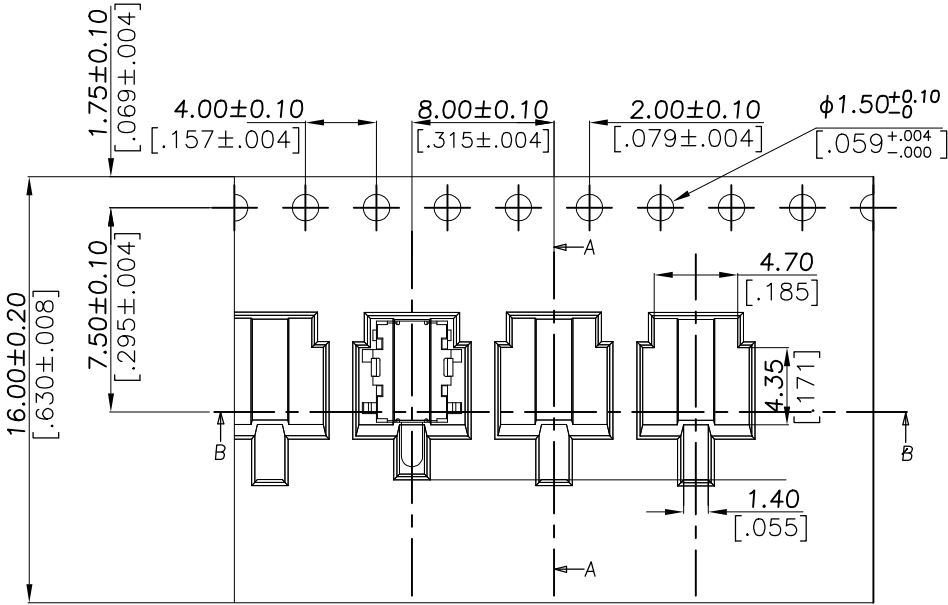
ALL RIGHTS RESERVED.

REVISIONS

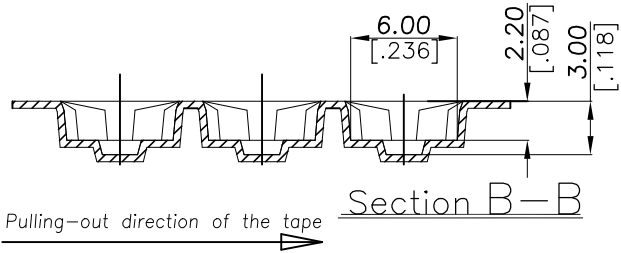
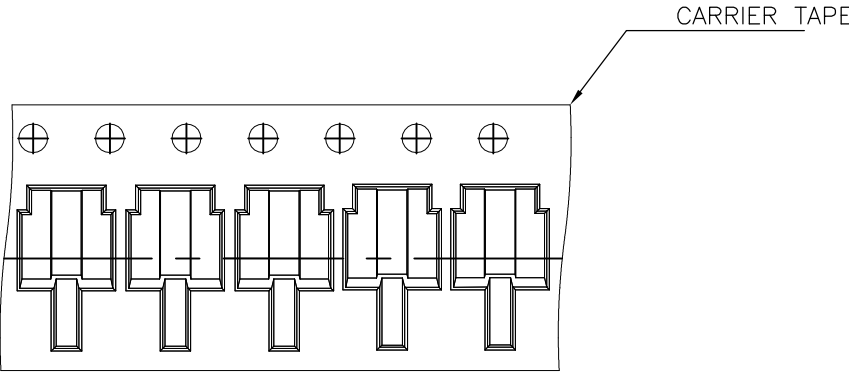
P	LTR	DESCRIPTION	DATE	DWN	APVD
	-	SEE SHEET 1	-	-	-

PACKAGING:
3000 SWITCHES PER REEL

THE DIMENSION OF CARRIER TAPE, COVER TAPE AND REEL

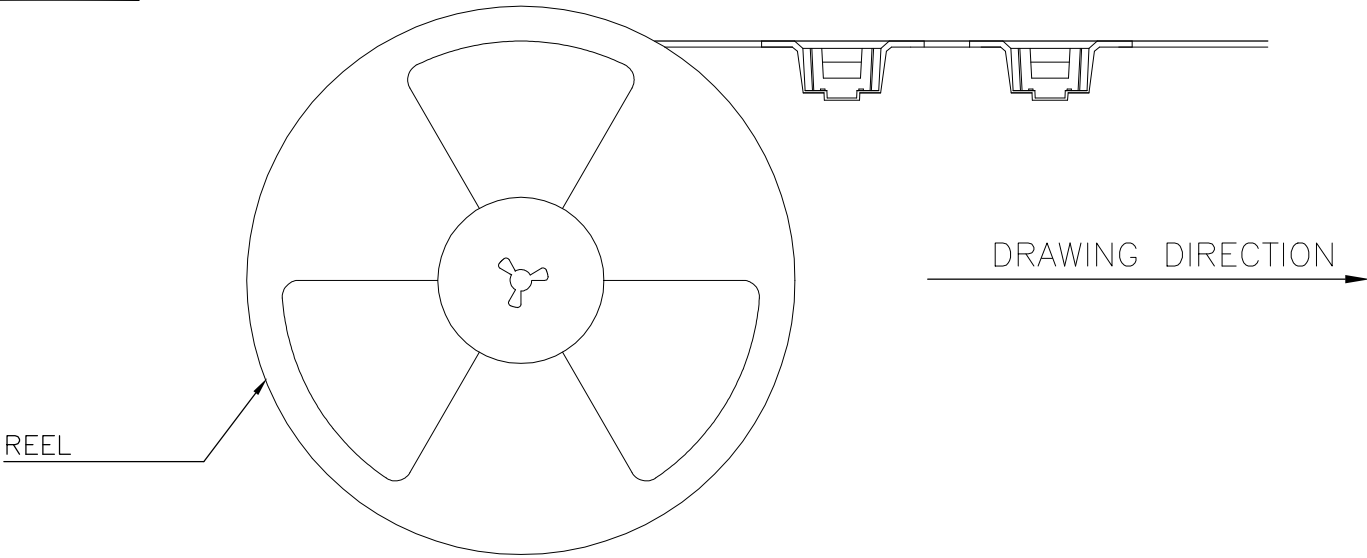


THE DIRECTION OF PILOT HOLES

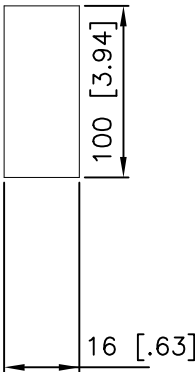
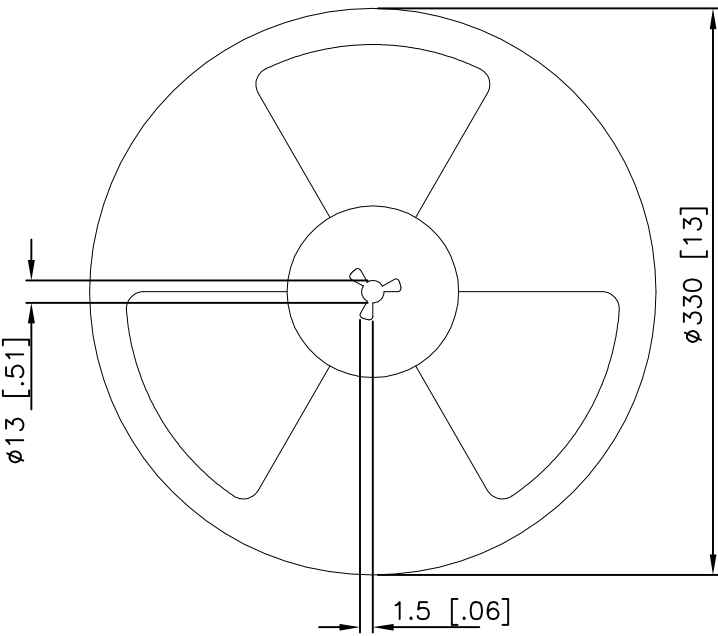


Section A-A


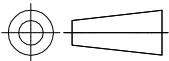
Section B-B



REEL



PRELIMINARY

THIS DRAWING IS A CONTROLLED DOCUMENT.		DWN 07MAR2018 GANESH C M	 TE Connectivity Ltd.		
DIMENSIONS: mm [INCHES]		CHK 07MAR2018 ALEXANDER SHARPE			
		APVD 07MAR2018 ALEXANDER SHARPE	NAME SWITCH, DETECTOR, JJH SERIES, 5.7X4.0mm, HORIZONTAL, SMT		
		PRODUCT SPEC			
MATERIAL -		APPLICATION SPEC	SIZE A3		
		WEIGHT	CAGE CODE 00779		
FINISH -		CUSTOMER DRAWING	DRAWING NO C-2331391		
			RESTRICTED TO -		
			SCALE NTS		
			SHEET 3 of 3		
			REV 1		