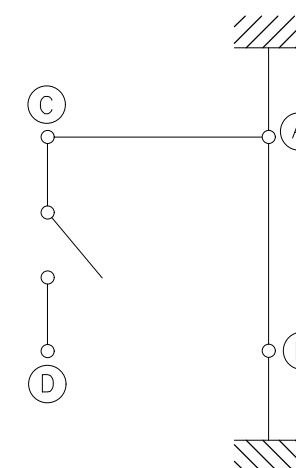
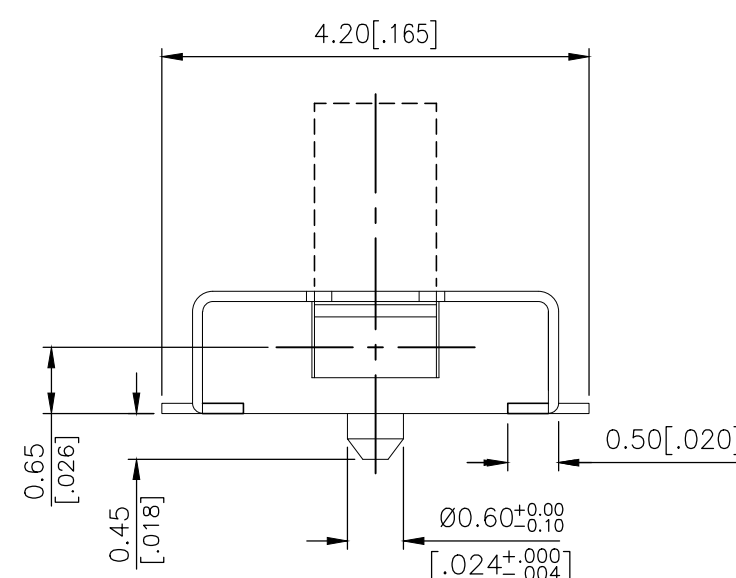
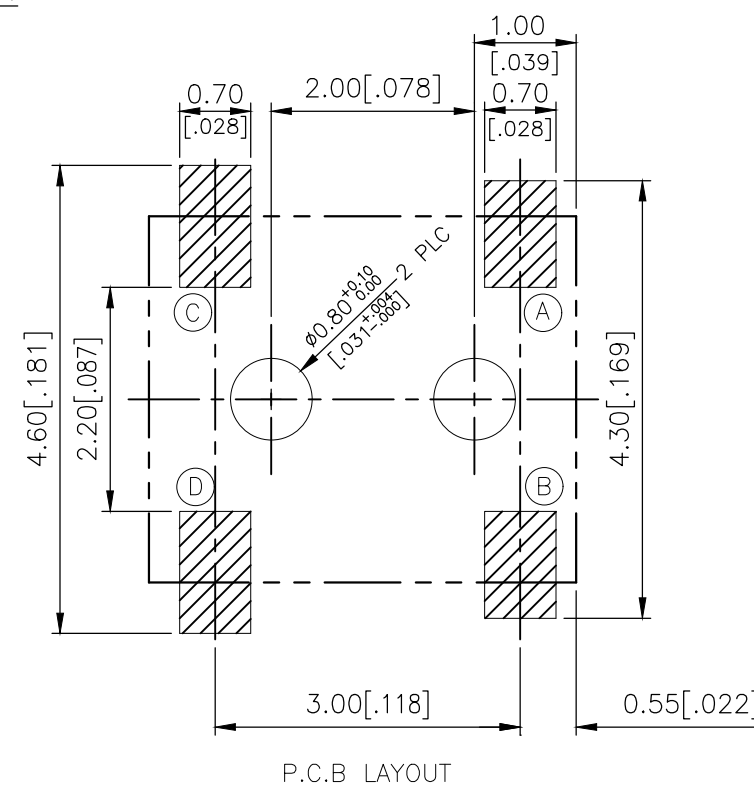

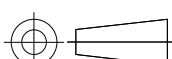


2331408-1
AS SHOWN



CIRCUIT DIAGRAM

PRELIMINARY

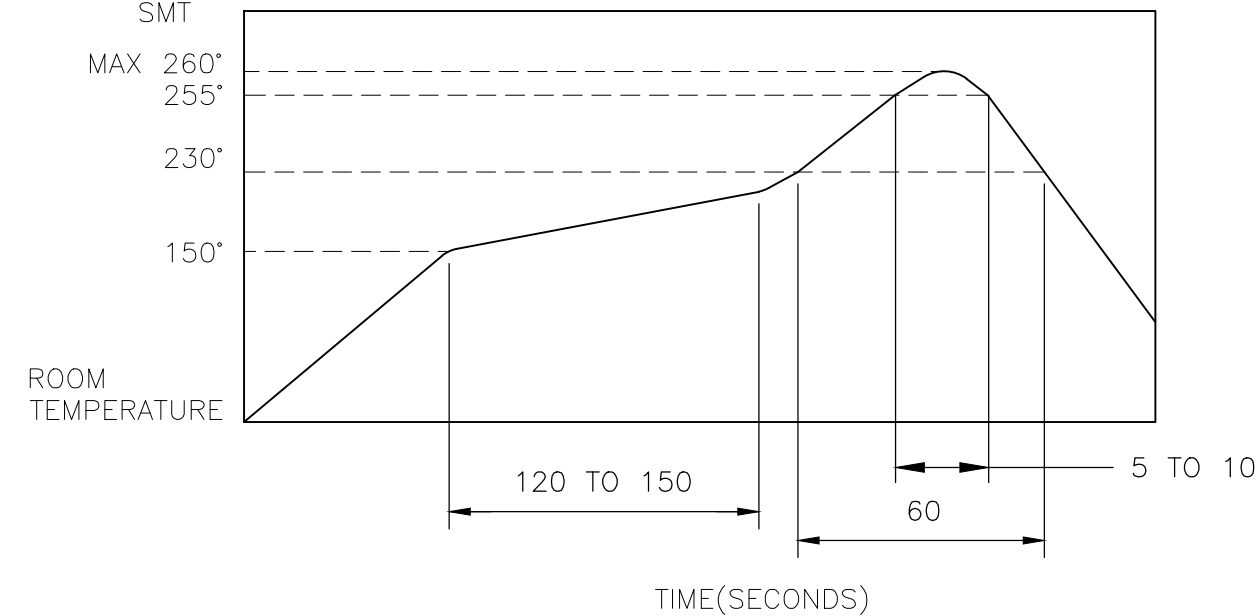
THIS DRAWING IS A CONTROLLED DOCUMENT.		DWN 07MAR2018 GANESH C M		 TE Connectivity Ltd.	
DIMENSIONS: mm [INCHES]		CHK 07MAR2018 ALEXANDER SHARPE			
TOLERANCES UNLESS OTHERWISE SPECIFIED:		APVD 07MAR2018 ALEXANDER SHARPE		NAME	
		0 PLC ± — 1 PLC ± — 2 PLC ± 0.20 [.008] 3 PLC ± — 4 PLC ± — ANGLES ± —		SWITCH, DETECTOR, JJD SERIES, 4.2X3.6mm VER ACTUATION,UPLIFT,SMT,POSTS,FLAT TERM —	
MATERIAL		FINISH		SIZE CAGE CODE DRAWING NO RESTRICTED TO A3 00779 C-2331408 —	
CUSTOMER DRAWING				SCALE	NTS 1 OF 3
				SHEET	REV

REVISIONS					
P	LTR	DESCRIPTION	DATE	DWN	APVD
	—	SEE SHEET 1	—	—	—

NOTES:

1. MATERIALS:
ACTUATOR: THERMOPLASTIC,UL 94V–0, BLACK
BODY: THERMOPLASTIC, UL 94V–0, BLACK
COVER: NICKEL SILVER
TERMINAL: COPPER ALLOY, SILVER PLATE
CONTACT: COPPER ALLOY, SILVER PLATE
SILICONE: SILICONE, BLACK
STEM: THERMOPLASTIC, BLACK
2. COMPLIANCE:
ALL MATERIALS AND FINISHES SHALL COMPLY WITH EU
DIRECTIVE 2002/95/EC OF 27JAN2003(RoHS)
3. SPECIFICATIONS:
RATING: DC 3V, 50 mA TO DC 5V, 10mA
CONTACT RESISTANCE: 500mΩ MAXIMUM(INITIAL)
INSULATION RESISTANCE: 100MΩ MINIMUM AT 100V DC
DIELECTRIC STRENGTH: 100V AC, 1 MINUTE
OPERATING LIFE: 50,000 CYCLES WITH LOAD
TOTAL TRAVEL: 60°
ACTUATION FORCE: 40gf MAXIMUM
OPERATING TEMPERATURE: –10°C TO 60° C
STORAGE TEMPERATURE: –20°C TO 70° C

4. SOLDER CONDITIONS:



THE CONDITION MENTIONED ABOVE IS THE TEMPERATURE ON THE CU FOIL OF THE PCB SURFACE. THERE ARE CASES WHERE THE BOARD’S TEMPERATURE GREATLY DIFFERS FROM THE SWITCH’S SURFACE BE USED NOT TO ALLOW SWITCH’S SURFACE TEMPERATURE TO EXCEED 260°C

MANUAL SOLDERING


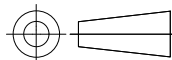
SOLDERING TEMPERATURE	MAX.350°C.
CONTINUOUS SOLDERING TIME	MAX. 5 SECONDS.

PRECAUTIONS IN HANDLING

1. CARE SHOULD BE EXERCISED SO THAT FLUX FROM THE UPPER PART OF THE PRINTED CIRCUIT BOARD DOES NOT ADHERE TO THE SWITCH.

JJDVUUG305NOPMRTR	2331408–1
SMART PART NUMBER	PART NUMBER

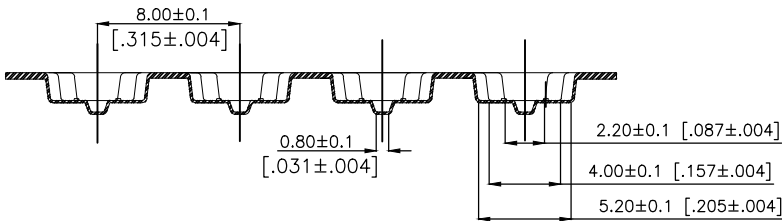
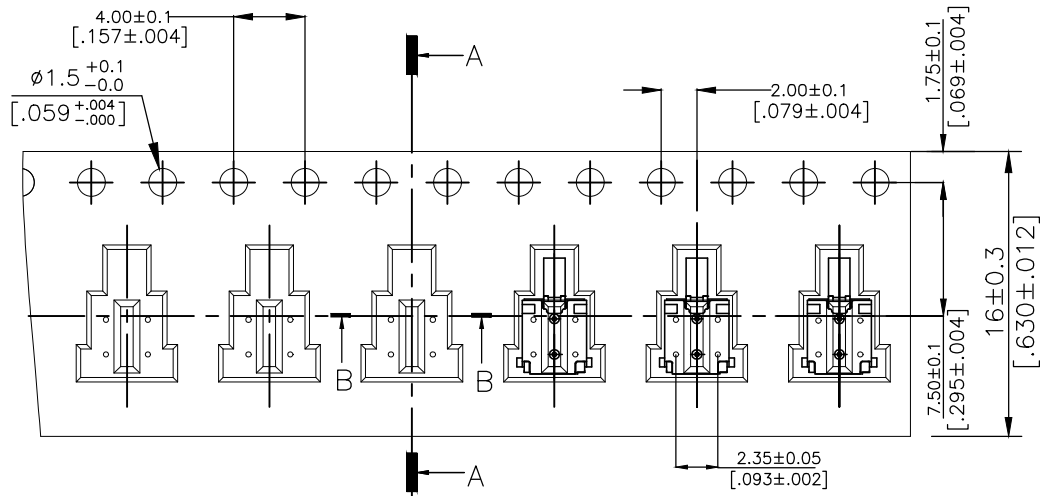
PRELIMINARY

THIS DRAWING IS A CONTROLLED DOCUMENT.		DWN GANESH C M 07MAR2018		<div>TE Connectivity Ltd.</div>		
DIMENSIONS: mm [INCHES]	TOLERANCES UNLESS OTHERWISE SPECIFIED:	CHK ALEXANDER SHARPE 07MAR2018				
		APVD ALEXANDER SHARPE 07MAR2018	NAME SWITCH, DETECTOR, JJD SERIES, 4.2X3.6mm VER ACTUATION,UPLIFT,SMT,POSTS,FLAT TERM —			
	0 PLC ± — 1 PLC ± — 2 PLC ± 0.20 [.008] 3 PLC ± — 4 PLC ± — ANGLES ± —	PRODUCT SPEC —	SIZE A3 CAGE CODE 00779 DRAWING NO C-2331408 RESTRICTED TO —			
		APPLICATION SPEC —				
	MATERIAL —	FINISH —	WEIGHT	CUSTOMER DRAWING		
			SCALE NTS	SHEET 2 OF 3	REV 1	

REVISIONS					
P	LTR	DESCRIPTION	DATE	DWN	APVD
	—	SEE SHEET 1	—	—	—

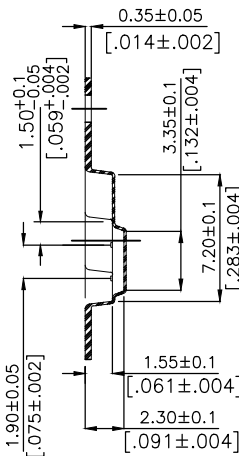
PACKAGING:
3600 SWITCHES PER REEL

THE DIMENSION OF CARRIER TAPE, COVER TAPE AND REEL

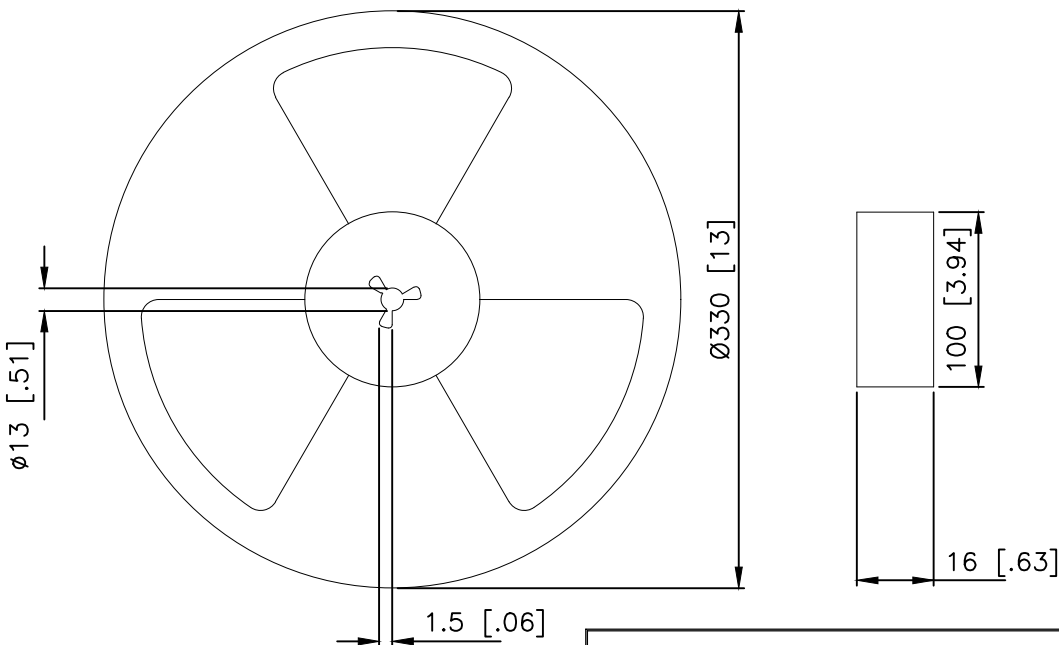
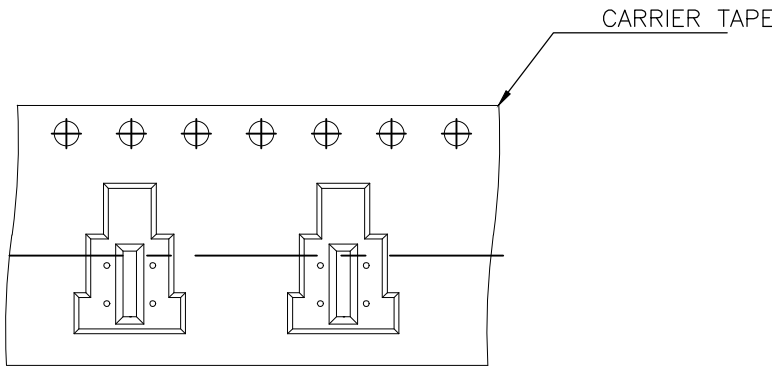


SECTION B-B

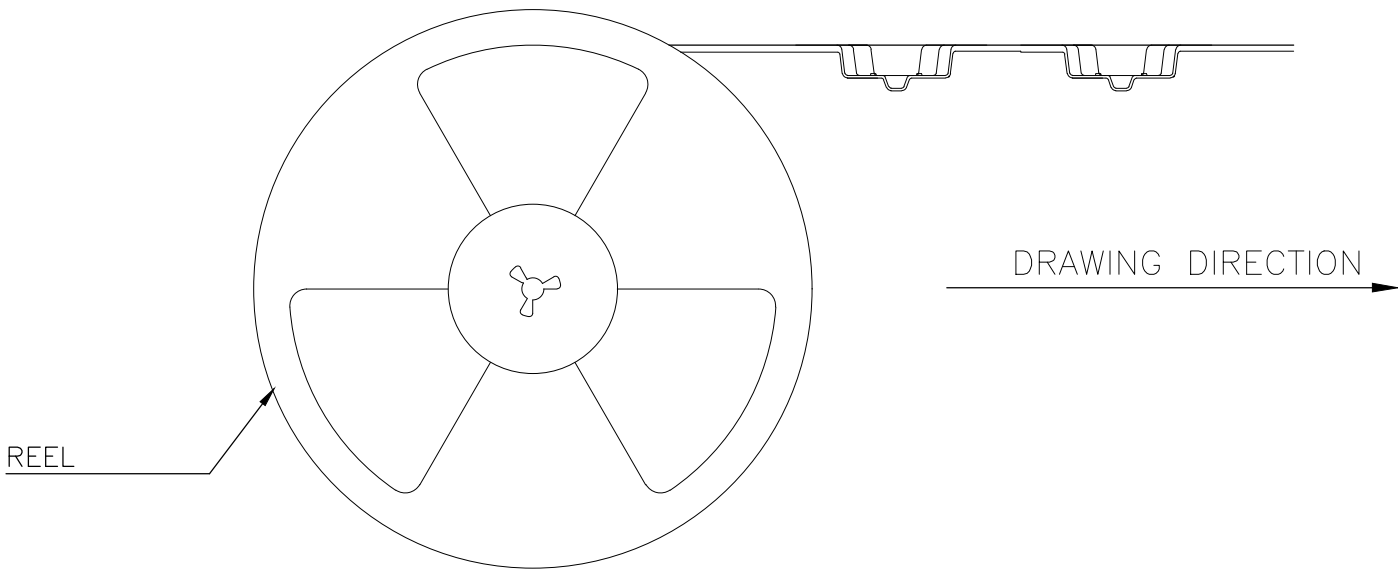
SECTION A-A



THE DIRECTION OF PILOT HOLES



PRELIMINARY



THIS DRAWING IS A CONTROLLED DOCUMENT.		DWN GANESH C M 07MAR2018	TE Connectivity Ltd.		
DIMENSIONS: mm [INCHES]		CHK ALEXANDER SHARPE 07MAR2018			
TOLERANCES UNLESS OTHERWISE SPECIFIED:		APVD ALEXANDER SHARPE 07MAR2018	NAME SWITCH, DETECTOR, JJD SERIES, 4.2X3.6mm VER ACTUATION,UPLIFT,SMT,POSTS,FLAT TERM		
0 PLC ± — 1 PLC ± — 2 PLC ± 0.20 [.008] 3 PLC ± — 4 PLC ± — ANGLES ± —		PRODUCT SPEC —	SIZE A3		
MATERIAL —		APPLICATION SPEC —	CAGE CODE 00779		
FINISH —		WEIGHT —	DRAWING NO C-2331408		
CUSTOMER DRAWING		SCALE NTS	SHEET 3 of 3		
			REV 1		