

THIS DRAWING IS UNPUBLISHED.

RELEASED FOR PUBLICATION

REVISIONS

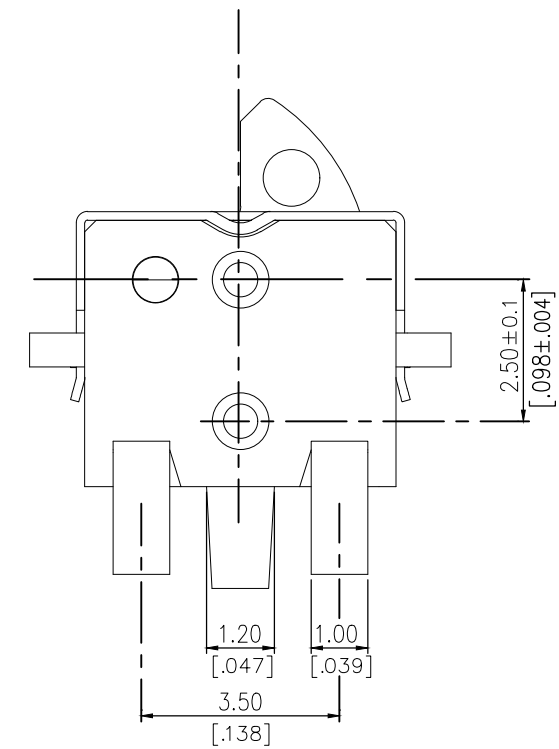
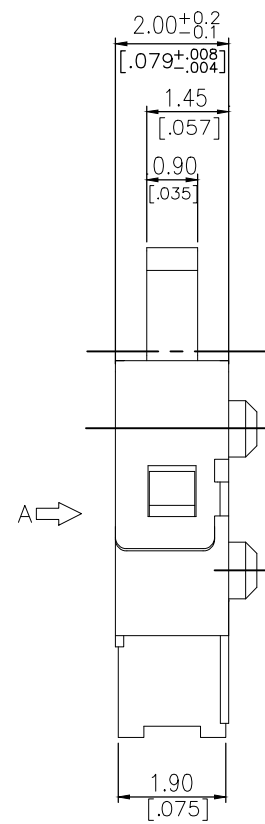
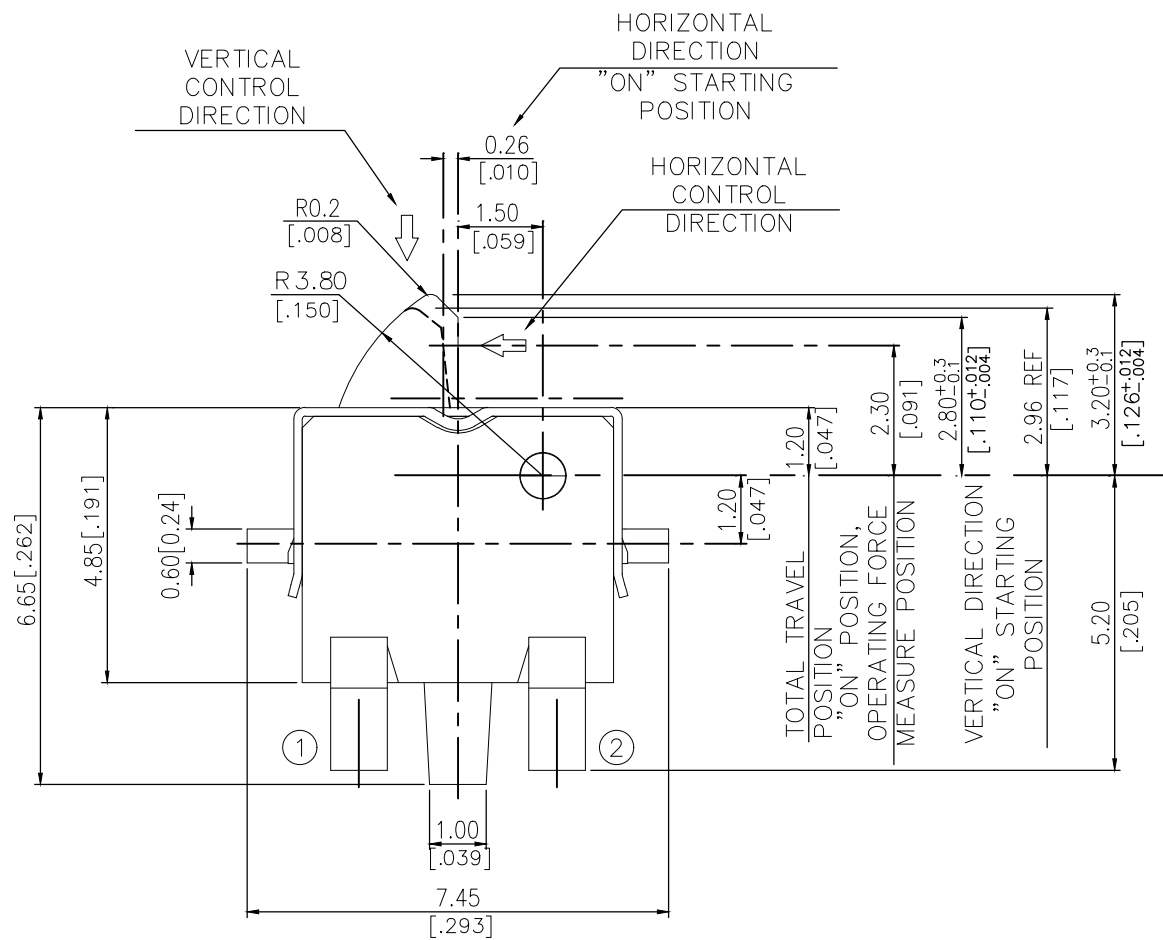
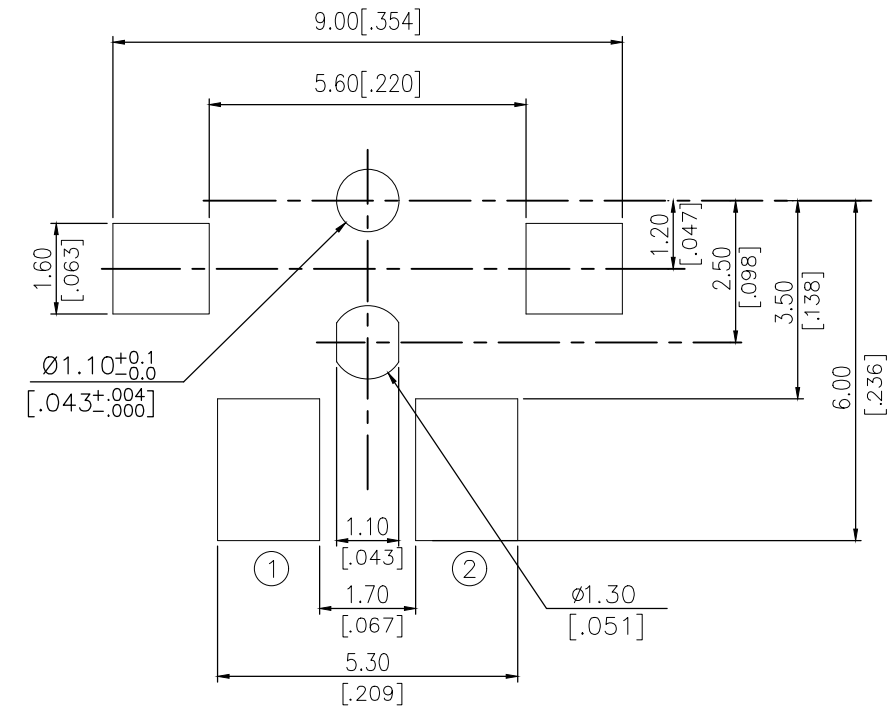
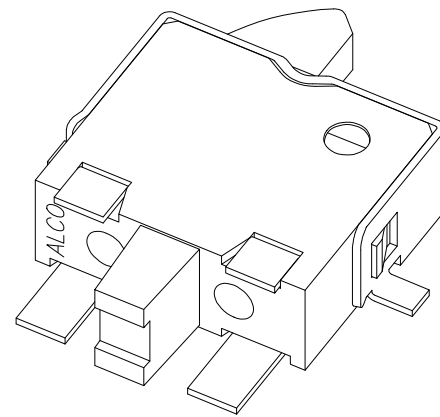
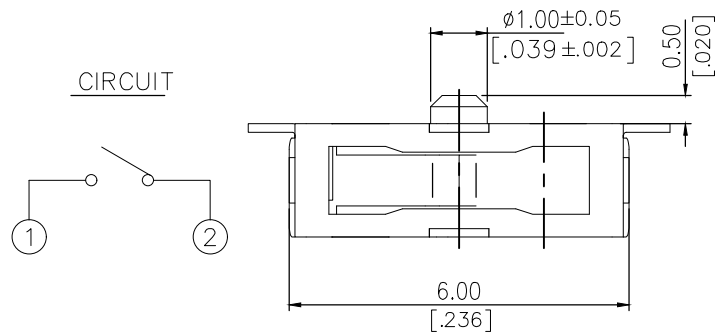
© COPYRIGHT - TE Connectivity Ltd.

ALL RIGHTS RESERVED.

P	LTR	DESCRIPTION	DATE	DWN	APVD
1		NEW DRAWING	07MAR2018	GCM	AS

2331401-1  
AS SHOWN

P.C.B LAYOUT



THIS DRAWING IS A CONTROLLED DOCUMENT.

DIMENSIONS:	TOLERANCES UNLESS OTHERWISE SPECIFIED:
mm [INCHES]	
	0 PLC ± -
	1 PLC ± -
	2 PLC ± 0.20 [.008]
	3 PLC ± -
	4 PLC ± -
	ANGLES ± -
MATERIAL	FINISH
-	-

DWN	07MAR2018
GANESH C M	
CHK	07MAR2018
ALEXANDER SHARPE	
APVD	07MAR2018
ALEXANDER SHARPE	
PRODUCT SPEC	
APPLICATION SPEC	
WEIGHT	
CUSTOMER DRAWING	

<p><b>PRELIMINARY</b> <b>STE</b> TE Connectivity Ltd.</p>			
<p>SWITCH, DETECTOR, JJJ SERIES, 6.0X4.85mm, HORIZONTAL, SMT, LEFT, WITH GROUND</p>			
SIZE	CAGE CODE	DRAWING NO	RESTRICTED TO
A3	00779	C-2331401	-
SCALE	SHEET	REV	
NTS	1 OF 3	1	

**PRELIMINARY**

THIS DRAWING IS UNPUBLISHED. RELEASED FOR PUBLICATION  
 © COPYRIGHT - TE Connectivity Ltd. ALL RIGHTS RESERVED.

REVISIONS					
P	LTR	DESCRIPTION	DATE	DWN	APVD
-	-	SEE SHEET 1	-	-	-

NOTES:

1. MATERIALS

ACTUATOR: THERMOPLASTIC, UL 94V-0, BROWN  
 BODY: THERMOPLASTIC, UL 94V-0, BLACK  
 COVER: NICKEL SILVER  
 TERMINAL: COPPER ALLOY, SILVER PLATE  
 CONTACT: STAINLESS STEEL, SILVER CLAD

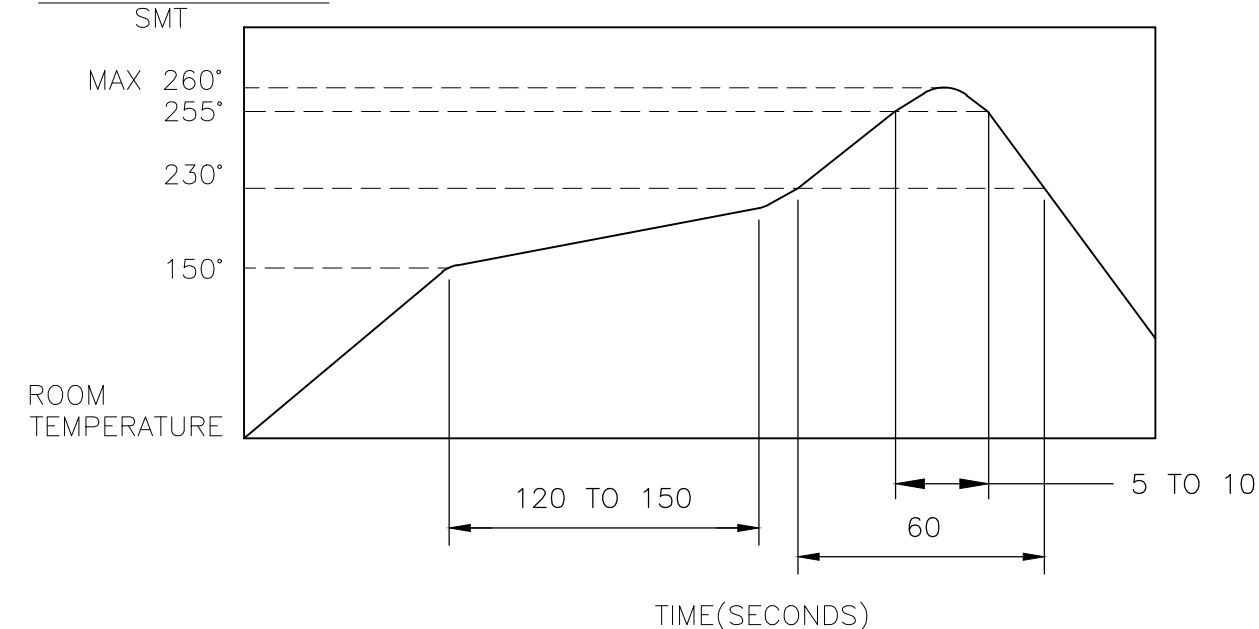
2. COMPLIANCE:

ALL MATERIALS AND FINISHES SHALL COMPLY WITH EU DIRECTIVE 2002/95/EC OF 27JAN2003(RoHS)

3. SPECIFICATIONS:

RATING: 50mA, 20V DC  
 CONTACT RESISTANCE: 1Ω MAXIMUM(INITIAL)  
 INSULATION RESISTANCE: 100MΩ MINIMUM AT 100V DC  
 DIELECTRIC STRENGTH: 100V AC, 1 MINUTE  
 OPERATING LIFE: 100,000 CYCLES WITH LOAD  
 TOTAL TRAVEL: 2.0 [.079]  
 ACTUATION FORCE: 50gf MAXIMUM  
 OPERATING TEMPERATURE: -10°C TO 60°C  
 STORAGE TEMPERATURE: -20°C TO 70°C

4. SOLDER CONDITIONS:



THE CONDITION MENTIONED ABOVE IS THE TEMPERATURE ON THE CU FOIL OF THE PCB SURFACE. THERE ARE CASES WHERE THE BOARD'S TEMPERATURE GREATLY DIFFERS FROM THE SWITCH'S SURFACE. DO NOT ALLOW SWITCH'S SURFACE TEMPERATURE TO EXCEED 260°C

MANUAL SOLDERING

SOLDERING TEMPERATURE	MAX.350°C.
CONTINUOUS SOLDERING TIME	MAX. 5 SECONDS.

PRECAUTIONS IN HANDLING

1. CARE SHOULD BE EXERCISED SO THAT FLUX FROM THE UPPER PART OF THE PRINTED CIRCUIT BOARD DOES NOT ADHERE TO THE SWITCH.

JJHLLGG200NOPMRTR	2331401-1
SMART PART NUMBER	PART NUMBER

**PRELIMINARY**

THIS DRAWING IS A CONTROLLED DOCUMENT.		DWN	07MAR2018	TE Connectivity Ltd.		
		CHK	07MAR2018			
DIMENSIONS: mm [INCHES]		TOLERANCES UNLESS OTHERWISE SPECIFIED:		NAME		
		0 PLC ± -		ALEXANDER SHARPE		
		1 PLC ± -		APVD 07MAR2018		
		2 PLC ± 0.20 [.008]		ALEXANDER SHARPE		
		3 PLC ± -		PRODUCT SPEC		
		4 PLC ± -		APPLICATION SPEC		
		ANGLES ± -		SIZE		
		FINISH		CAGE CODE		
MATERIAL				DRAWING NO		
				RESTRICTED TO		
				A3 00779 C-2331401		
CUSTOMER DRAWING				SCALE	SHEET	REV
				NTS	2 OF 3	1

