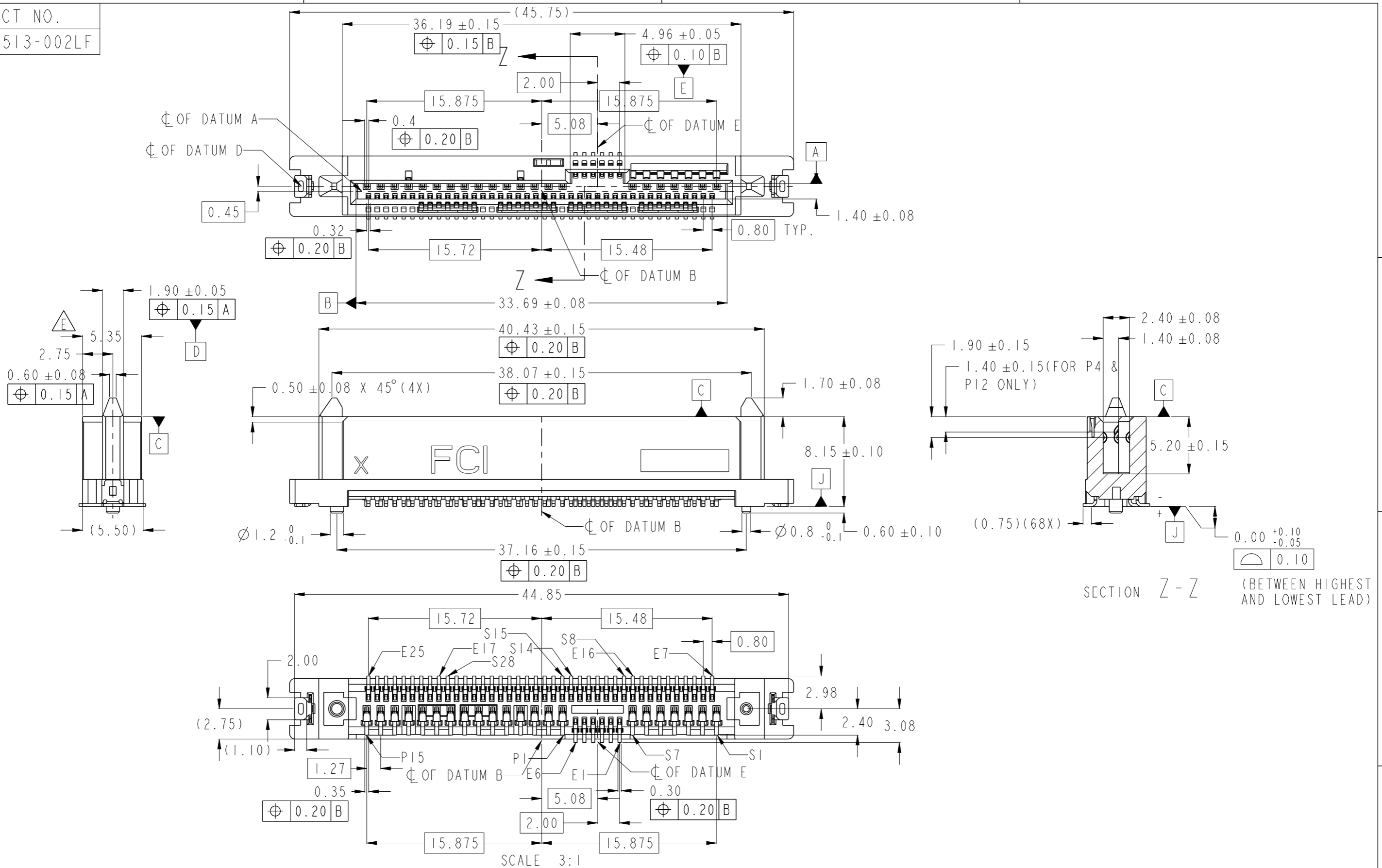


PRODUCT NO.
10120513-002LF

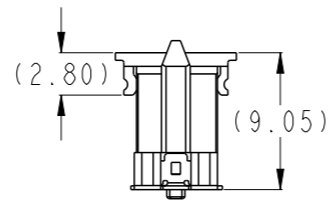
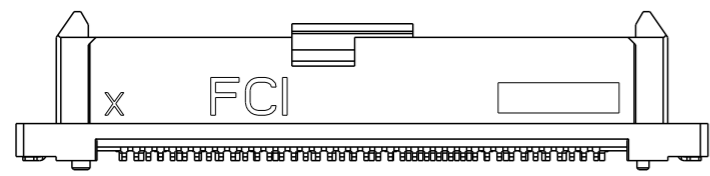
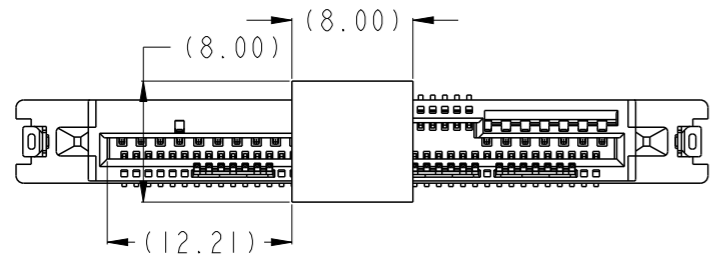


Amphenol
FCi

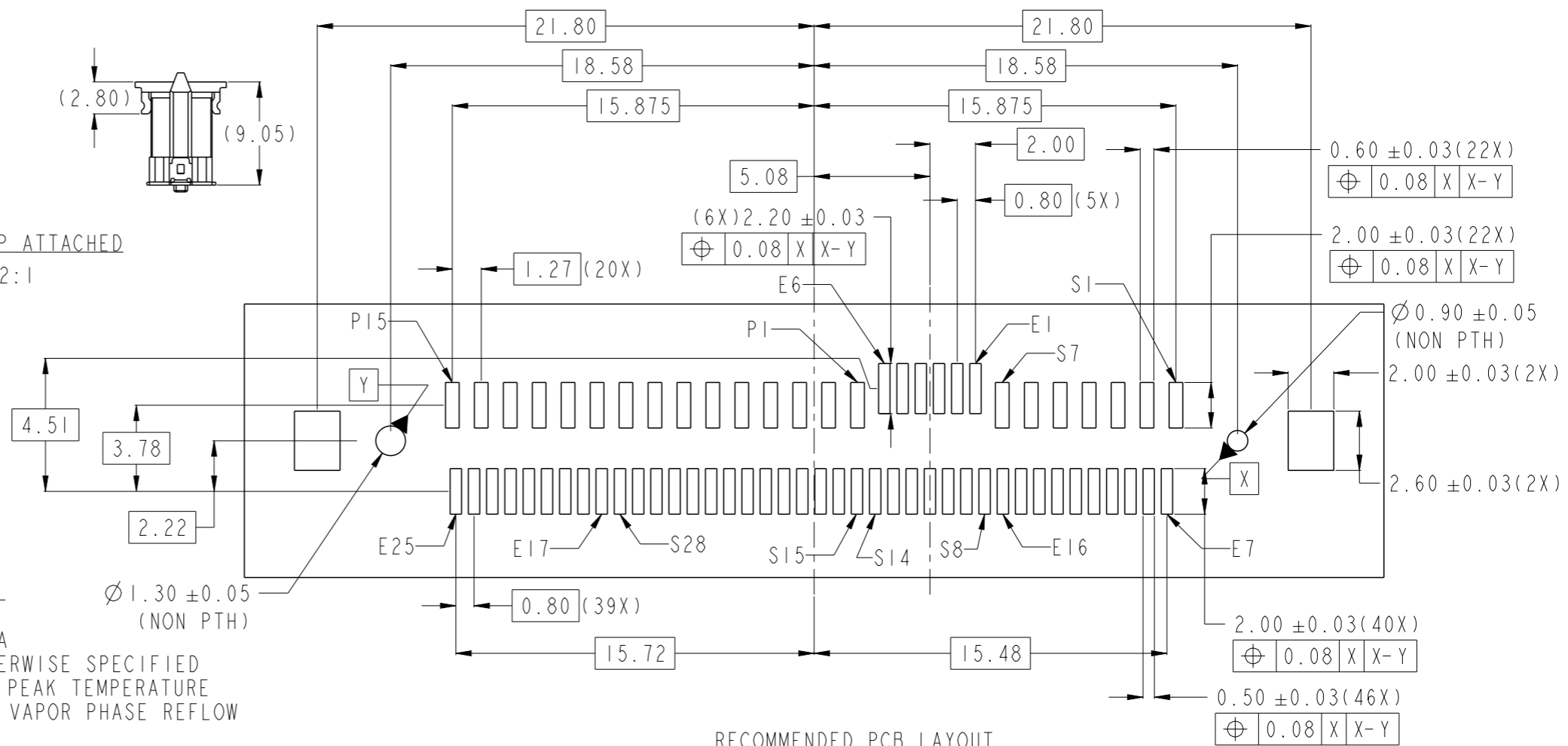
© 2016 AFCI

spec ref	-	dr	Koon-Poh Tay	2013/11/07	projection	MM	size	A3	scale	3:1										
tolerance std	TOLERANCES UNLESS OTHERWISE SPECIFIED	eng	Jeffrey Lim	2017/05/02			ecn no	ELX-S-26847-1	rel level	Released										
surface	<table border="1"> <tr> <td>linear</td> <td>0.X</td> <td>±0.3</td> </tr> <tr> <td></td> <td>0.XX</td> <td>±0.20</td> </tr> <tr> <td></td> <td>0.XXX</td> <td>±-</td> </tr> <tr> <td>angular</td> <td>0°</td> <td>±2°</td> </tr> </table>	linear	0.X	±0.3				0.XX		±0.20		0.XXX	±-	angular	0°	±2°	appr	Koon-Poh Tay	2017/05/30	product family
linear	0.X	±0.3																		
	0.XX	±0.20																		
	0.XXX	±-																		
angular	0°	±2°																		
		Amphenol FCI			cat. no.		Product - Customer Drw		sheet 1 of 2											
		dwg no 10120513			rev E															

PRODUCT NO.	HOLD DOWN	PLATING	PICK UP CAP	PACKAGING
10120513-002LF	2 PCS	NOTE 2	NO	TRAY
10120513-002CLF			YES	
10120513-002TRLF			NO	TAPE & REEL
10120513-002C-TRLF			YES	
10120513-002CETRLF				



WITH PICKUP CAP ATTACHED
SCALE 2:1



RECOMMENDED PCB LAYOUT
SCALE 4:1

- NOTES:
- MATERIAL:
 - HOUSING HIGH TEMP THERMOPLASTIC, UL 94V-0
COLOUR: BLACK
 - TERMINAL: COPPER ALLOY
 - HOLD DOWN: COPPER ALLOY
 - FINISH:
 - TERMINAL: 30u" Au PLATING (CONTACT POINT)
OVER 50u" NICKEL
 - SOLDER TAIL: 100u" MIN Sn OVER 50u" NICKEL
 - HOLD DOWN: 100u" MIN Sn OVER 50u" NICKEL
 - PER SFF REV 2.2, EXCEPT 0.8mm PITCH BUMP AREA
 - THE STANDARD PACKAGING IS IN TRAY UNLESS OTHERWISE SPECIFIED
 - THE HOUSING WILL WITHSTAND EXPOSURE TO 260°C PEAK TEMPERATURE FOR 10 SECONDS IN A CONVECTION, INFRA-RED OR VAPOR PHASE REFLOW OVEN.
 - THIS PRODUCT MEETS EUROPEAN UNION DIRECTIVES AND OTHER COUNTRY REGULATIONS AS DESCRIBED IN GS-47-0004.
 - PART NUMBER ENDING IN "LF" MEANS FOR LEAD FREE IDENTIFICATION.
 - THIS PRODUCT COMPLIES WITH U.2/SFF-8639 SPECIFICATION
 - PRODUCT SPEC.: GS-12-1169
 - PACKAGING SPEC.: GS-14-966(TAPE & REEL); GS-14-841(TRAY)
 - A SYMBOL WILL BE NEXT TO ANY DIMENSION, VIEW, OR NOTE WHICH HAS BEEN MODIFIED WITH THE CURRENT DRAWING REVISION

spec ref	-	dr	Koon-Poh Tay	2013/11/07	projection	MM	size	A3	scale	1:1	
tolerance std	TOLERANCES UNLESS OTHERWISE SPECIFIED	eng	Jeffrey Lim	2017/05/02		← →	ecn no	ELX-S-26847-1			
-	-	chr	-	-			rel level	Released			
surface	linear	appr	Koon-Poh Tay	2017/05/30	product family	-	rel level	Released			
-	angular	0°	±0.3	±0.20	Amphenol FCI		dwg no	10120513		rev	E
-	0°	±2°	SAS/PCIe RECEPTACLE VERTICAL SMT		cat. no.	-	Product - Customer Drw	sheet 2 of 2			