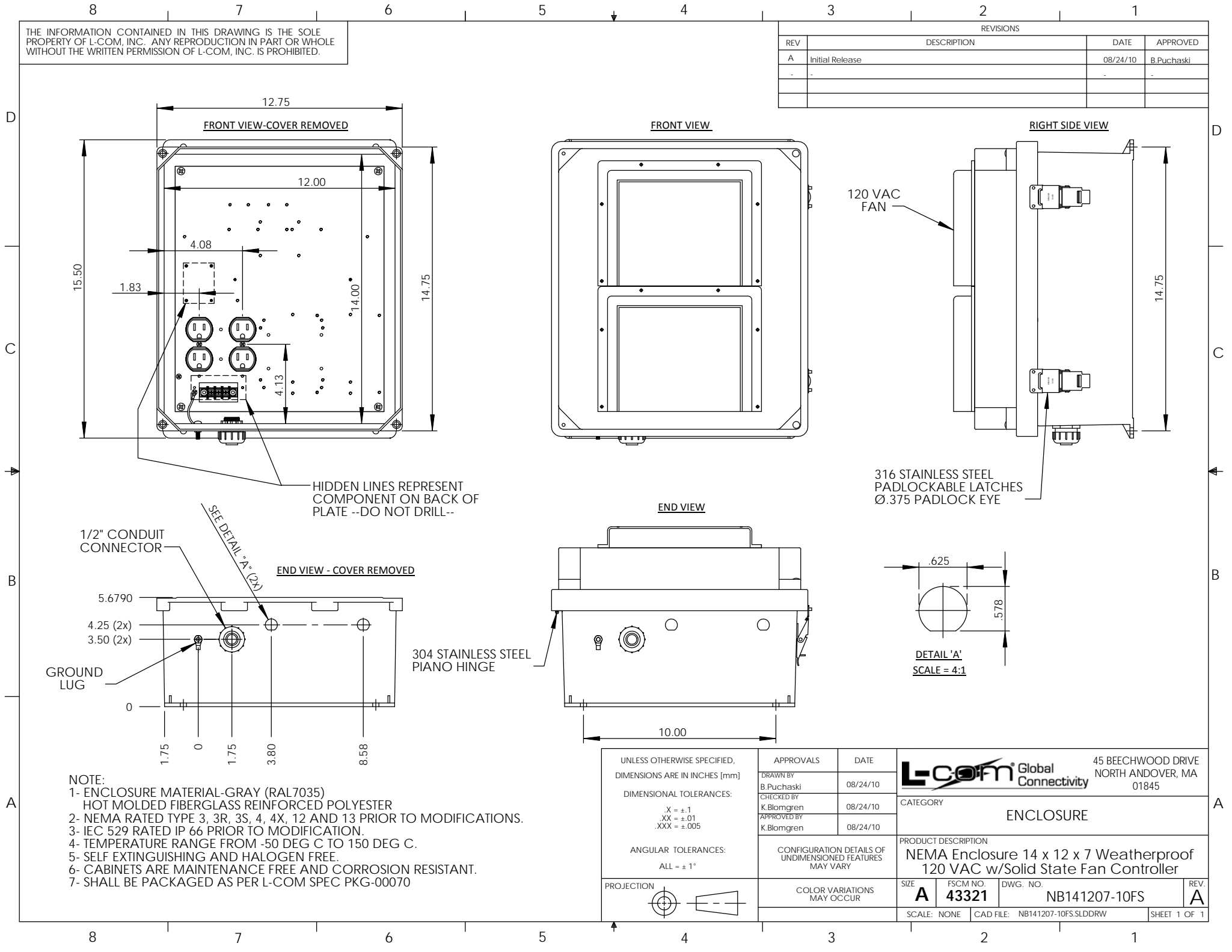


THE INFORMATION CONTAINED IN THIS DRAWING IS THE SOLE PROPERTY OF L-COM, INC. ANY REPRODUCTION IN PART OR WHOLE WITHOUT THE WRITTEN PERMISSION OF L-COM, INC. IS PROHIBITED.

REVISIONS			
REV	DESCRIPTION	DATE	APPROVED
A	Initial Release	08/24/10	B.Puchaski
-	-	-	-
-	-	-	-



HIDDEN LINES REPRESENT COMPONENT ON BACK OF PLATE --DO NOT DRILL--

SEE DETAIL 'A' (2X)

316 STAINLESS STEEL PADLOCKABLE LATCHES  
Ø.375 PADLOCK EYE

DETAIL 'A'  
SCALE = 4:1

- NOTE:
- ENCLOSURE MATERIAL-GRAY (RAL7035) HOT MOLDED FIBERGLASS REINFORCED POLYESTER
  - NEMA RATED TYPE 3, 3R, 3S, 4, 4X, 12 AND 13 PRIOR TO MODIFICATIONS.
  - IEC 529 RATED IP 66 PRIOR TO MODIFICATION.
  - TEMPERATURE RANGE FROM -50 DEG C TO 150 DEG C.
  - SELF EXTINGUISHING AND HALOGEN FREE.
  - CABINETS ARE MAINTENANCE FREE AND CORROSION RESISTANT.
  - SHALL BE PACKAGED AS PER L-COM SPEC PKG-00070

UNLESS OTHERWISE SPECIFIED, DIMENSIONS ARE IN INCHES [mm]	APPROVALS	DATE		45 BEECHWOOD DRIVE NORTH ANDOVER, MA 01845	
	DRAWN BY B.Puchaski	08/24/10			
	DIMENSIONAL TOLERANCES: .X = ±.1 .XX = ±.01 .XXX = ±.005	CHECKED BY K.Blomgren	08/24/10	CATEGORY ENCLOSURE	
	ANGULAR TOLERANCES: ALL = ± 1°	APPROVED BY K.Blomgren	08/24/10	PRODUCT DESCRIPTION NEMA Enclosure 14 x 12 x 7 Weatherproof 120 VAC w/Solid State Fan Controller	
PROJECTION 	COLOR VARIATIONS MAY OCCUR	SIZE <b>A</b>	FSCM NO. <b>43321</b>	DWG. NO. NB141207-10FS	REV. <b>A</b>
		SCALE: NONE	CAD FILE: NB141207-10FS.SLDDRW	SHEET 1 OF 1	